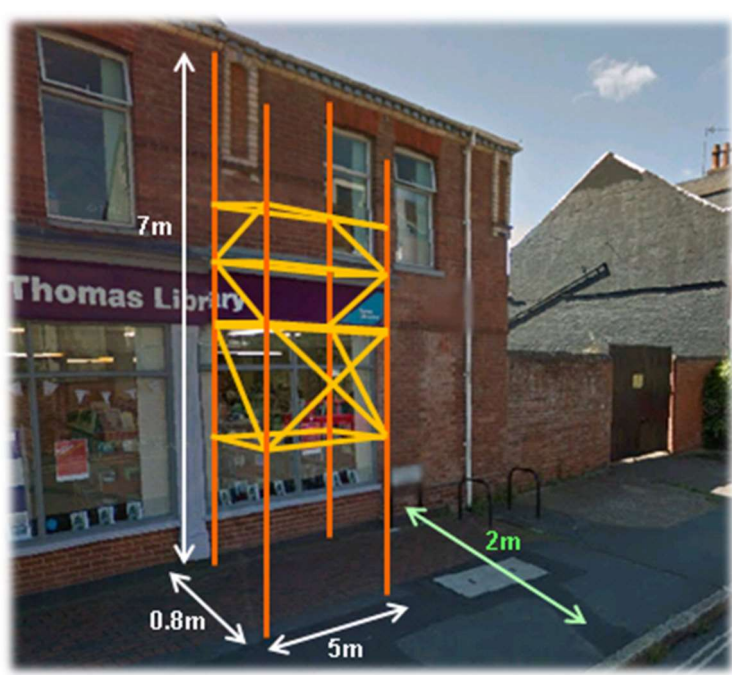
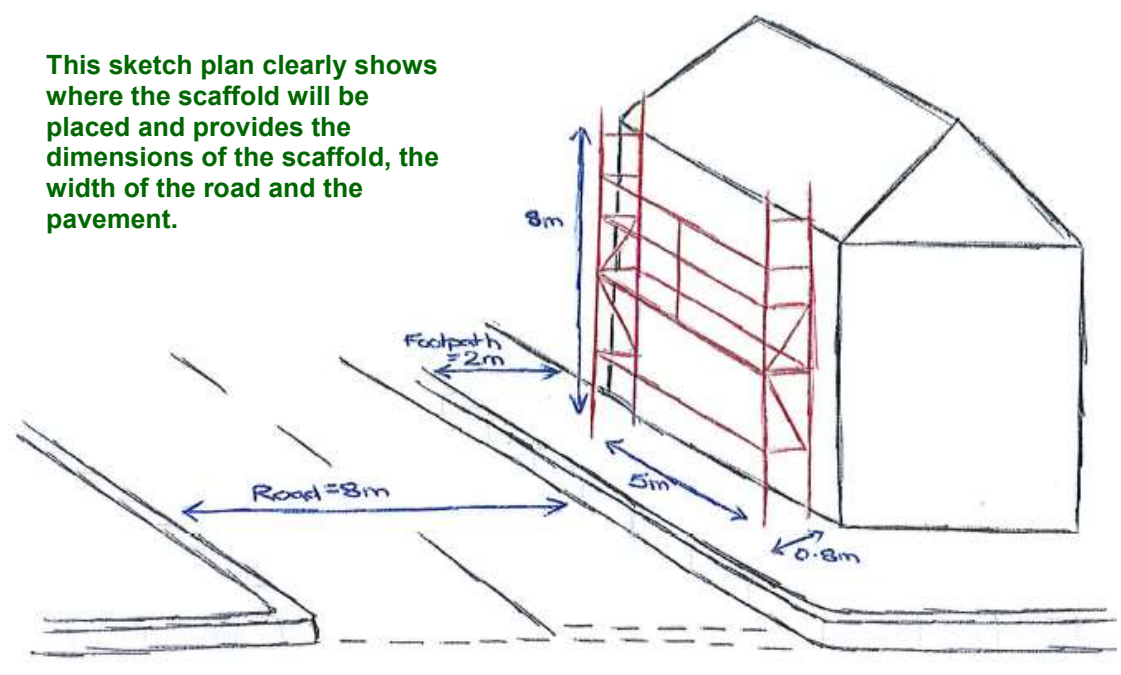


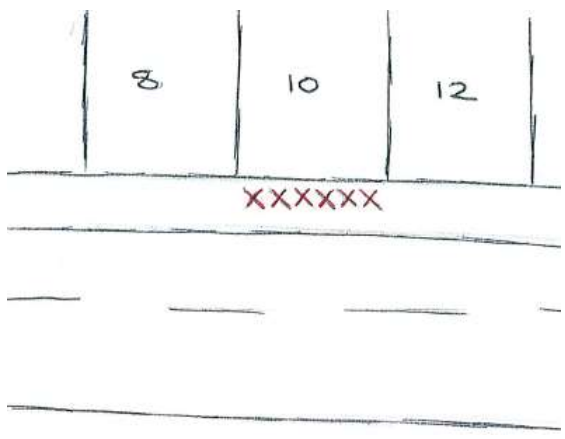
**Acceptable site location plan examples (Scaffolds)**

This sketch plan clearly shows where the scaffold will be placed and provides the dimensions of the scaffold, the width of the road and the pavement.



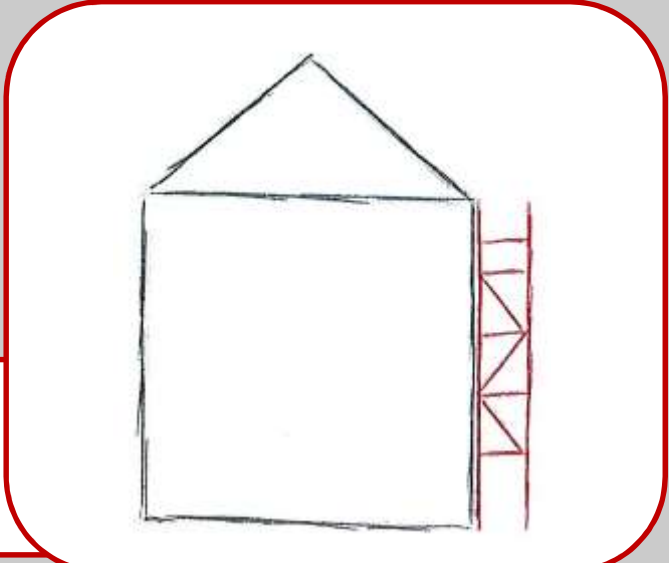
This plan is created from a street view image and shows where the scaffold will be placed. It provides the dimensions of the scaffold and width of the pavement.

## Unacceptable site location plan examples (Scaffolds)



Although this plan indicates the scaffold will be at the front of the property and on the pavement, it doesn't provide any dimensions or the width of the pavement and road.

This plan doesn't indicate the dimensions of the scaffold or the width of the road and pavement. It also isn't clear if the scaffold will be on the pavement, in the road or both.



This street view image doesn't give any indication of where the scaffold will be placed.

This plan doesn't indicate whether the structure goes beyond, or remains well within, the yellow lines, how close the structure comes to the corner of the building and if it encroaches onto the road.

