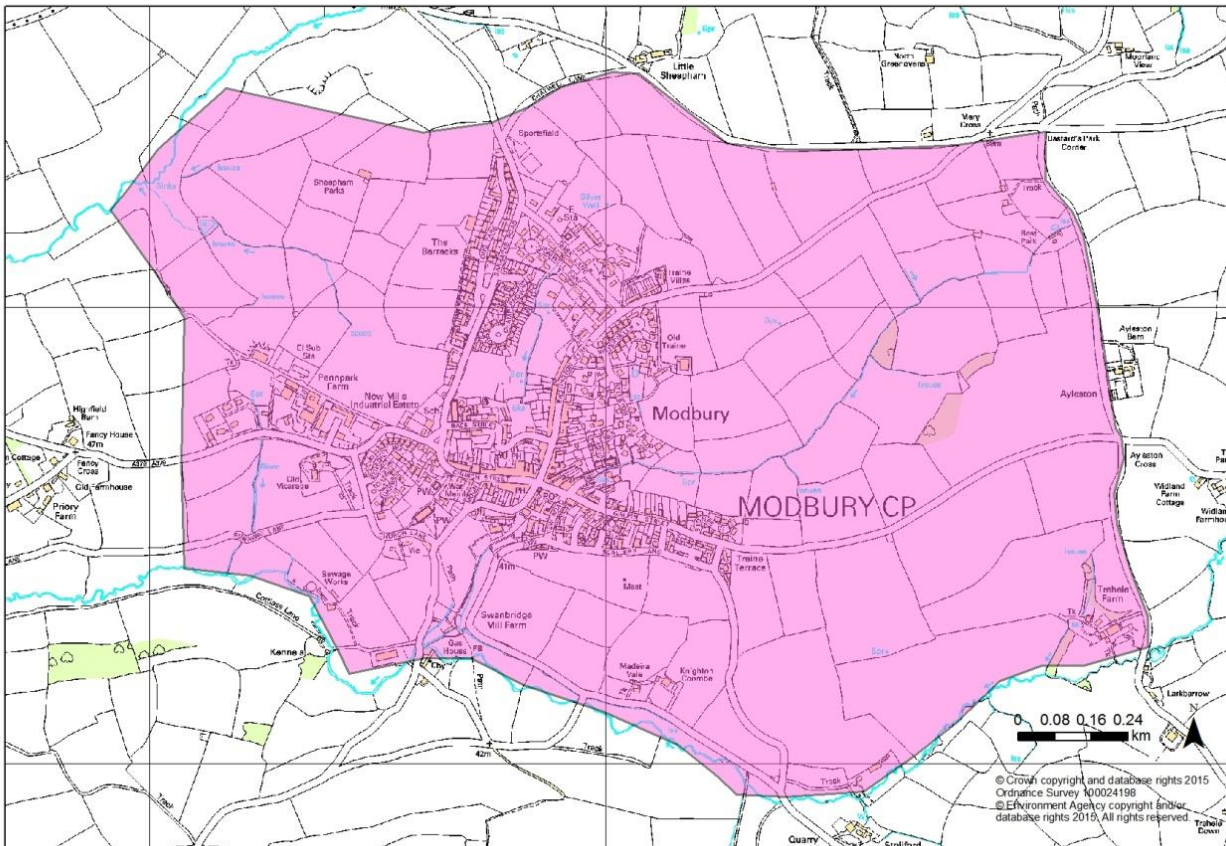


Critical Drainage Area (CDA)

South Hams District Council - Modbury

May 2015



Catchment Drainage/Flooding Issues

Modbury has a history of flooding. Existing culverts and channels are at the limit of their capacity as shown in 2012.

Potential development is focussed on the Silver Well stream catchment.

The existing culverts and flood walls are unlikely to attract funding for significant improvements, and given that current rainfall runoff rates already cause problems and climate change will increase the frequency of flooding further, alternative measures need to be applied.

Minimum Drainage Standards Required

All new development will have to play their part in reducing current rainfall runoff rates. This requirement also applies to brown field sites that will have to match the same standards. The SuDS hierarchy should be followed, by using infiltration as far as is practicable. Further guidance on such systems can be found in the CIRIA SUDS manual and in LLFA guidance.

All off-site surface water discharges from development should mimic "Greenfield" performance up to a maximum 1 in 10 year discharge rate. On-site all surface water should be safely managed up to the "1 in 100+climate change" conditions. This will require additional water storage areas to be created thereby contributing to a reduction in flooding downstream.