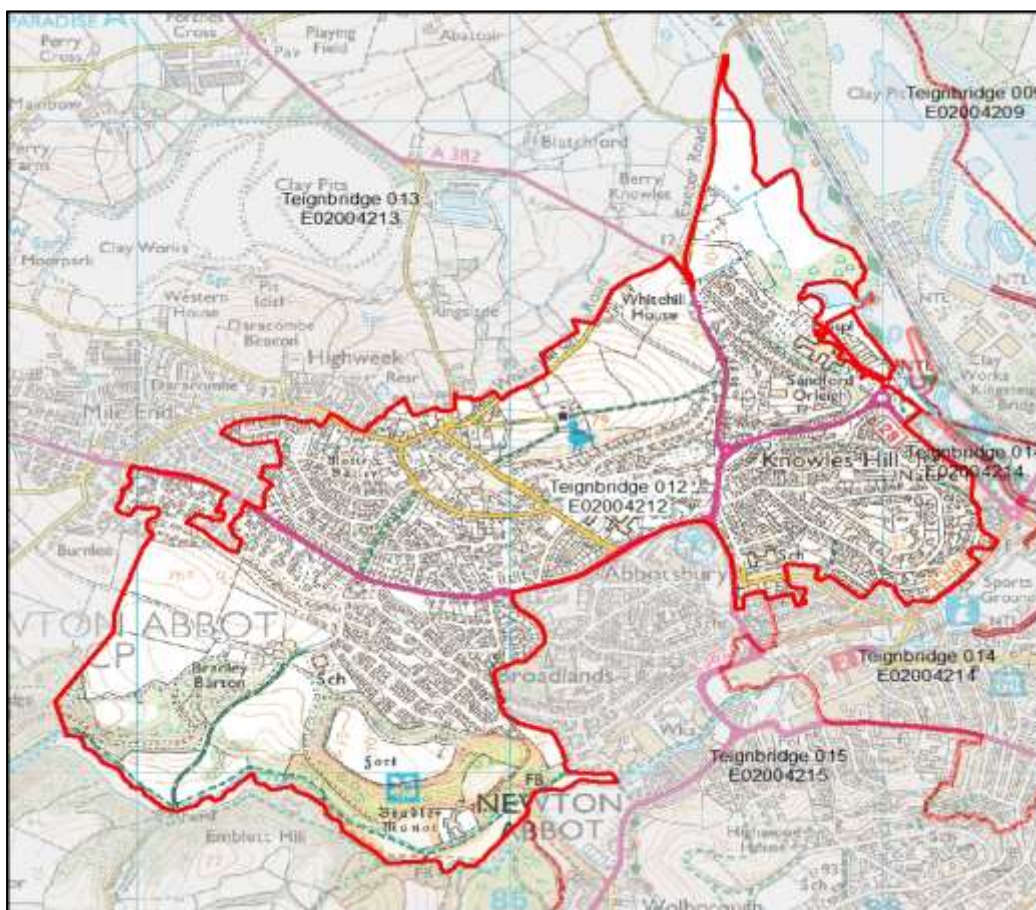


DEVON JSNA COMMUNITY PROFILE 2017

MIDDLE SUPER OUTPUT AREA (MSOA) BASED

E02004212

Description	MSOA covering North and West Newton Abbot
Deprivation Group	Q4 - Below Average
District	Teignbridge
County	Devon
CCG	South Devon & Torbay CCG
CCG Locality	Newton Abbot Locality



Last updated:	June 2017
Queries to:	maria.moloney-lucey@devon.gov.uk
Next update due:	June 2018
Author:	Maria Lucey, Senior Public Health Analyst, Devon County Council
Contributors:	Julie Ashall, Melanie Burke, Carla Calzavacca, Eddie Smith, Louise Hann, Mark Painter, Ian Poole, Caroline Smith, Simon Chant (Devon County Council), Suzie Winter (Babcock LDP), Ben Johnson (NEW Devon CCG), Andy Tellham (Careers South West), Sue Rook and Christine Cherop (Devon Partnership Trust)

ABOUT THESE PROFILES

OVERVIEW

This is the Devon Joint Strategic Needs Assessment (JSNA) Community Profile for E02004212.

The aim of the JSNA is to collaboratively identify current and future health and wellbeing needs to inform future service planning and delivery. This profile contains a range of socio-economic, health, care and wellbeing related data, which provide a detailed assessment of current need and service activity at a local level. In addition to data relating to E02004212, information is provided for the hierarchy that the area is within as set out at the top of page 1:

Deprivation Group - based on the area's rank nationally in the Index of Multiple Deprivation 2015
 District - based on local authority district
 County - based on administrative county
 CCG hierarchy - based on CCG (Clinical Commissioning Group), locality and sub-locality of residence

This profile shows the current position of E02004212 relative to this hierarchy both for the current year and historically. This report was created by the Devon Public Health Intelligence Team with assistance from the contributors listed on page 1.

This report contains indicators on population, deprivation, children and young people, uptake of benefits, health-related behaviour, and health and care activity and outcomes. Page contents are set out to the right. Information on sources and definitions are provided on page 42. Except for modelled data, rates are not available for counts of less than five. These are marked with a '#'.

CONTENTS

Page	Section
3	Indicator Summary
4	2011 Census Profile
5	Population
6	Index Of Multiple Deprivation
7	Indices Of Deprivation Domains
8	Indices Of Deprivation Sub-Domains
9	Income Deprivation
10	Employment Deprivation
11	Birth Rate
12	Early Help DAF Assessments
13	Children In Need
14	Safeguarding Enquiries (MASH)
15	English As An Additional Language
16	Special Educational Needs
17	Pupils In Well Rated Schools
18	GCSE Attainment: Five or More A*-C
19	Not In Education, Employment Or Training
20	Working Age Benefit Claimant Rate
21	Aged 16 To 24 Benefit Claimant Rate
22	ESA or Incapacity Benefit Claimant Rate
23	Carers Working Age Client Group
24	Disabled Working Age Client Group
25	Jobseekers Allowance Claimant Rate
26	Fuel Poverty
27	Health-Related Behaviour Estimates
28	Mental Ill Health Estimates
29	Access to Psychological Therapies
30	Use of Health Services
31	Emergency Admissions
32	Elective Admissions
33	Urgent Care Attendances
34	Accidental Falls Admissions
35	Alcohol-Related Admissions
36	Killed Or Seriously Injured On Roads
37	Life Expectancy at Birth
38	Life Expectancy at Age 65
39	Learning Disability Accommodation
40	Permanent Admissions to Care Homes
41	Outcome of Short-Term Support
42	Sources and Definitions

JSNA Profiles Home Page: www.devonhealthandwellbeing.org.uk/jsna/profiles

'Better Together' Community Performance summaries for Devon towns:
<https://new.devon.gov.uk/factsandfigures/performance/community-performance/>

INDICATOR SUMMARY

This summary displays all the main measures within the JSNA profile, showing the value for the area compared with the local authority district and Devon as a whole. A statistical significance column is also included which identifies if the area is significantly higher (orange shading), significantly lower (blue shading), or not significantly different (grey shading) than the Devon figure.

Measure	Area	Sig*	District	Devon	Chart	Trend
Total Population	6114	N/A	-	-	-	
0-15 Population	18.4%		16.2%	16.3%	■ ■ ■	
16-64 Population	61.4%		58.2%	59.2%	■ ■ ■	
65-84 Population	17.7%		21.7%	21.0%	■ ■ ■	
85+ Population	2.5%		3.8%	3.6%	■ ■ ■	
IMD 2015 Score	13.66	N/A	16.53	17.09	■ ■ ■	
Income Deprivation	10.6%		11.4%	10.8%	■ ■ ■	
Employment Deprivation	8.2%		10.0%	9.5%	■ ■ ■	
Birth Rate	58.2		60.8	58.5	■ ■ ■	
Early Help DAF Assessments	0.8%		0.8%	0.8%	■ ■ ■	-
Children in Need	3.8%		3.0%	2.7%	■ ■ ■	
MASH Enquiries	173.5		170.4	189.6	■ ■ ■	
English = Second Language	3.0%		2.2%	3.9%	■ ■ ■	
Special Educational Needs	21.7%		17.7%	17.0%	■ ■ ■	
Pupils in Well Rated Schools	96.9%		86.5%	89.2%	■ ■ ■	
GCSEs: Five or more A*-C	70.0%		62.1%	64.8%	■ ■ ■	
NEETS aged 16 to 18	6.9%		6.6%	7.3%	■ ■ ■	
Working Age Benefits	9.3%		10.0%	9.6%	■ ■ ■	
Benefit Claimants 16 to 24	7.7%		7.7%	6.3%	■ ■ ■	
ESA / Incapacity Benefit	4.2%		5.3%	5.3%	■ ■ ■	
Benefit Clients: Carers	1.8%		1.7%	1.5%	■ ■ ■	
Benefit Clients: Disabled	1.3%		1.1%	1.1%	■ ■ ■	
Job Seekers Allowance	0.8%		0.9%	0.9%	■ ■ ■	
Fuel Poverty	8.9%		11.7%	13.0%	■ ■ ■	
Psychological Therapies	2939.2		2717.3	2014.1	■ ■ ■	-
Emergency Admissions	7050.8		7165.5	7215.3	■ ■ ■	
Elective Admissions	10656.7		14156.8	14005.4	■ ■ ■	
Urgent Care Attendances	41150.8		37780.3	31899.6	■ ■ ■	
Accidental Fall Admissions	406.0		384.3	366.3	■ ■ ■	
Alcohol-Related Admissions	554.3		538.7	548.5	■ ■ ■	
Roads: Killed/Seriously Injured	#		46.0	45.7	■ ■	
Life Expectancy at Birth	81.6		82.4	82.4	■ ■ ■	
Life Expectancy at Age 65	20.4		20.8	20.8	■ ■ ■	
LD Supported Accommodation	69.2%		73.7%	75.8%	■ ■ ■	
Care Home Admissions	485.8		546.5	448.4	■ ■ ■	
Effective Short-Term Support	70.6%		88.8%	87.9%	■ ■ ■	

* Statistical Significance vs Devon

Rate not available (small numbers)

N/A Significance not available / calculable

Significantly higher

Significantly lower

No significant difference

2011 CENSUS PROFILE

Measure	Area n	Area rate	Sig*	District	Devon	SW	England
Higher Managerial	375	8.64%		9.75%	9.57%	10.24%	10.41%
Lower Managerial	987	22.73%		22.97%	21.71%	21.63%	20.92%
Intermediate Occs	573	13.20%		12.52%	12.14%	12.78%	12.79%
Small Employers	422	9.72%		13.68%	14.22%	11.29%	9.42%
Technical Occs	353	8.13%		7.25%	7.07%	7.30%	6.88%
Semi-Routine Occs	756	17.41%		15.19%	14.80%	14.82%	13.97%
Routine Occs	516	11.88%		10.25%	10.17%	10.57%	11.00%
Never worked	127	2.92%		2.97%	2.91%	3.42%	5.61%
Not Classified	233	5.37%		5.41%	7.40%	7.95%	9.01%
No Qualifications	1042	21.40%		21.55%	21.14%	20.70%	22.46%
Level 1 Quals	755	15.50%		13.50%	13.29%	13.60%	13.29%
Level 2 Quals	877	18.01%		16.57%	16.45%	16.38%	15.22%
Apprenticeship	228	4.68%		4.47%	4.16%	4.28%	3.57%
Level 3 Quals	673	13.82%		11.76%	12.90%	13.19%	12.35%
Level 4+ Quals	1123	23.06%		27.97%	27.76%	27.37%	27.38%
Other Quals	172	3.53%		4.19%	4.29%	4.47%	5.73%
FT Students 16-17	120	2.46%		2.55%	2.45%	2.60%	2.71%
FT Students 18+	113	2.32%		2.13%	3.99%	4.45%	5.46%
Lone Parent HH	261	10.47%		8.35%	8.15%	8.86%	10.61%
No Car or Van HH	386	15.48%		16.06%	17.38%	25.80%	18.90%
Shared Dwellings	#	#		0.03%	0.02%	0.03%	0.03%
No usual resident	72	2.81%		6.60%	7.81%	4.26%	5.97%
Has second address	194	3.27%		3.96%	5.73%	5.72%	5.17%
Communal Est Pop	58	0.98%		2.32%	2.50%	2.15%	1.80%
Overcrowding	125	5.01%		4.79%	4.96%	6.39%	8.74%
No central heating	69	2.77%		5.04%	5.11%	3.64%	2.69%
Average HH Size	-	2.4	N/A	2.2	2.3	2.3	2.4
Owner Occupied	1851	74.22%		73.47%	70.19%	63.34%	67.43%
Shared Ownership	42	1.68%		0.92%	0.81%	0.79%	0.76%
Social Rented	274	10.99%		8.91%	11.18%	17.69%	13.31%
Private Rented	307	12.31%		15.48%	16.29%	16.84%	17.09%
Living Rent Free	20	0.80%		1.22%	1.53%	1.34%	1.41%
White British	5767	97.10%		96.18%	94.93%	91.81%	79.75%
White Other	94	1.58%		2.16%	2.61%	3.61%	5.66%
Mixed	41	0.69%		0.74%	0.87%	1.36%	2.25%
Asian	31	0.52%		0.72%	1.17%	2.00%	7.82%
Black	#	#		0.09%	0.19%	0.94%	3.48%
Other Ethnic Group	#	#		0.10%	0.23%	0.30%	1.03%
Health Bad/V Bad	277	4.66%		5.49%	5.20%	5.15%	5.49%
Limited	1011	17.02%		20.62%	19.45%	18.41%	17.64%
Limited a Lot	436	7.34%		9.29%	8.55%	8.26%	8.31%
Limited, 16-64	444	7.48%		8.06%	7.74%	7.87%	8.26%
Limited a Lot, 16-64	174	2.93%		3.30%	3.16%	3.28%	3.63%
Provides Care	607	10.22%		12.09%	11.37%	10.78%	10.24%
Provides Care 50hr+	114	1.92%		2.72%	2.48%	2.37%	2.37%

* Statistical Significance vs Devon

Rate not available (small numbers)

N/A Significance not available / calculable

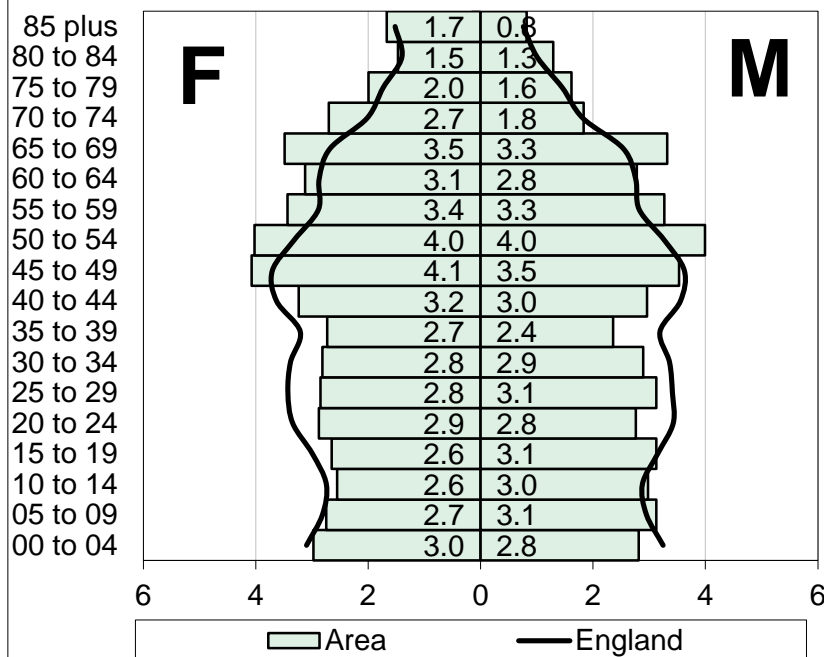
Significantly higher

Significantly lower

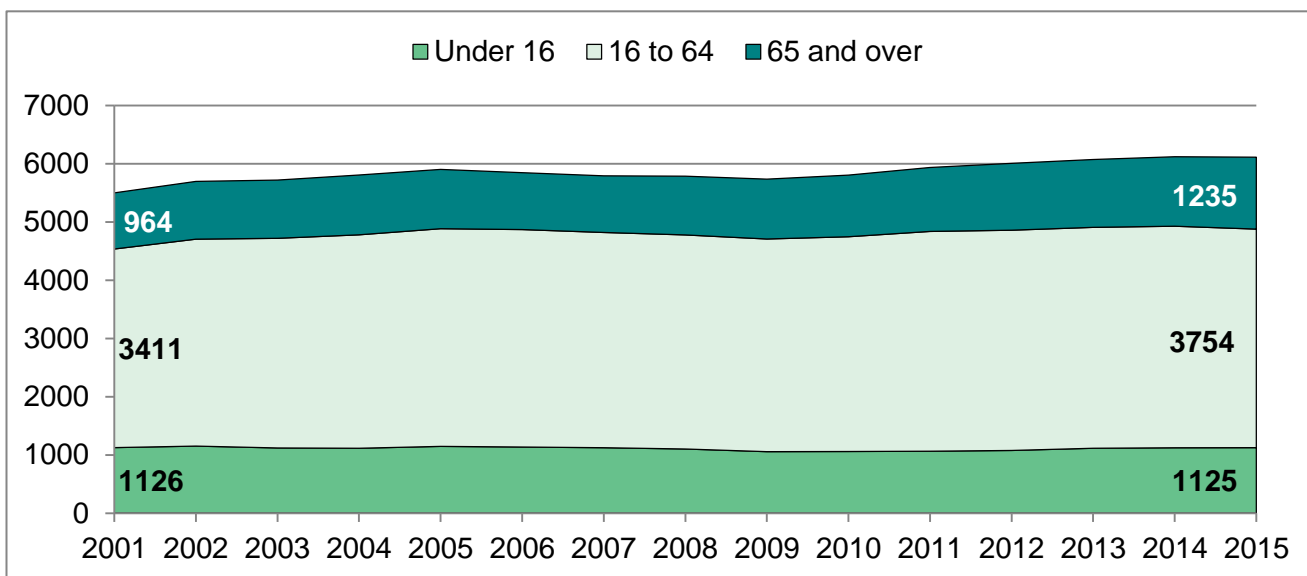
No significant difference

POPULATION

POPULATION PYRAMID
AREA vs NATIONAL PROFILE, 2015



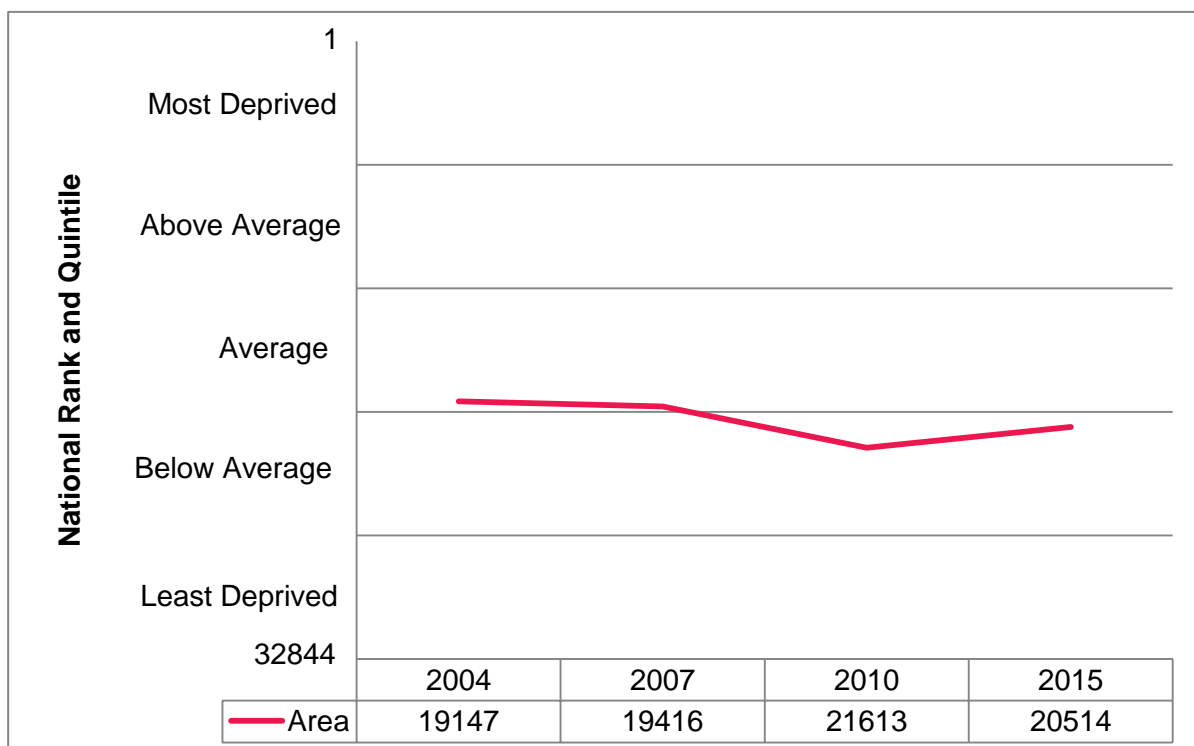
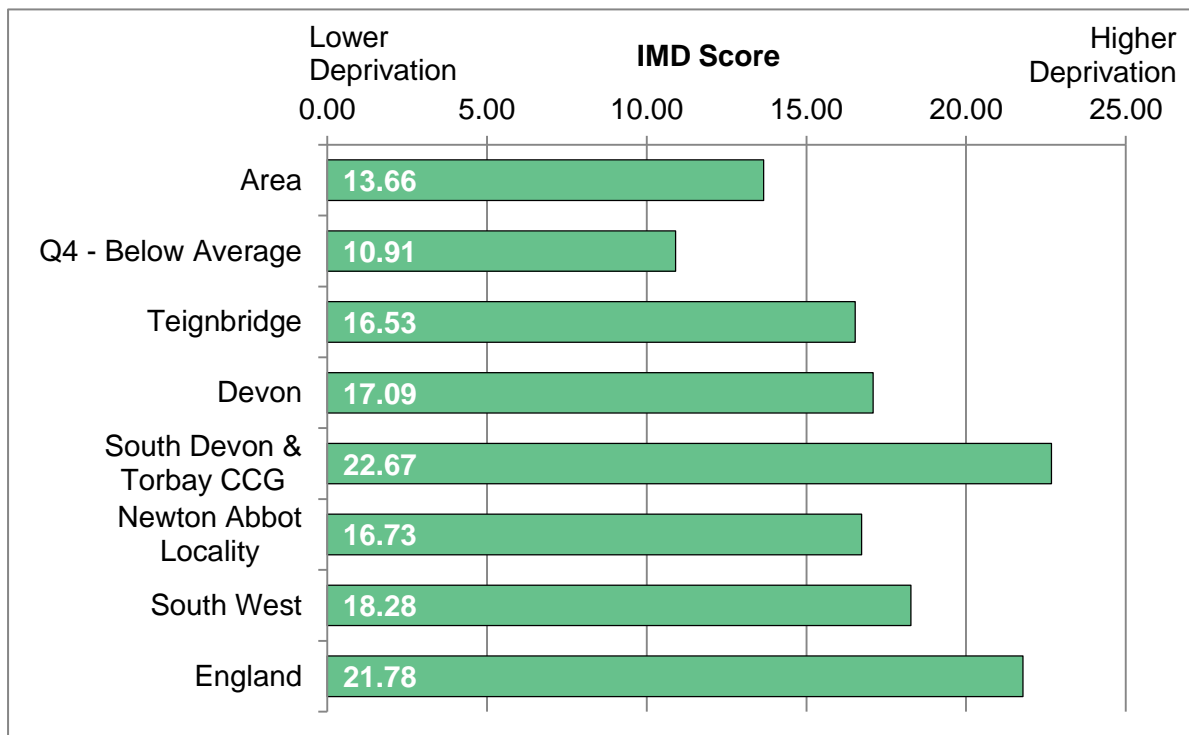
Age	Female	Male
0-4	182	172
5-9	168	191
10-14	156	182
15-19	162	191
20-24	176	169
25-29	174	191
30-34	172	177
35-39	167	144
40-44	198	181
45-49	249	216
50-54	246	244
55-59	210	200
60-64	191	170
65-69	213	203
70-74	165	112
75-79	122	99
80-84	90	79
85+	102	50
Total	3143	2971



Area	00-15	16-64	65-84	85+	Total
LSOA number	1125	3754	1083	152	6114
Area rate	18.4%	61.4%	17.7%	2.5%	100.0%
Q4 - Below Average	16.6%	57.9%	21.8%	3.8%	100.0%
Teignbridge	16.2%	58.2%	21.7%	3.8%	100.0%
Devon	16.3%	59.2%	21.0%	3.6%	100.0%
South Devon & Torbay	16.3%	57.7%	22.2%	3.8%	100.0%
Newton Abbot Locality	17.0%	59.7%	20.0%	3.4%	100.0%
South West	17.5%	61.4%	18.1%	3.0%	100.0%
England	19.0%	63.5%	15.2%	2.3%	100.0%

INDEX OF MULTIPLE DEPRIVATION

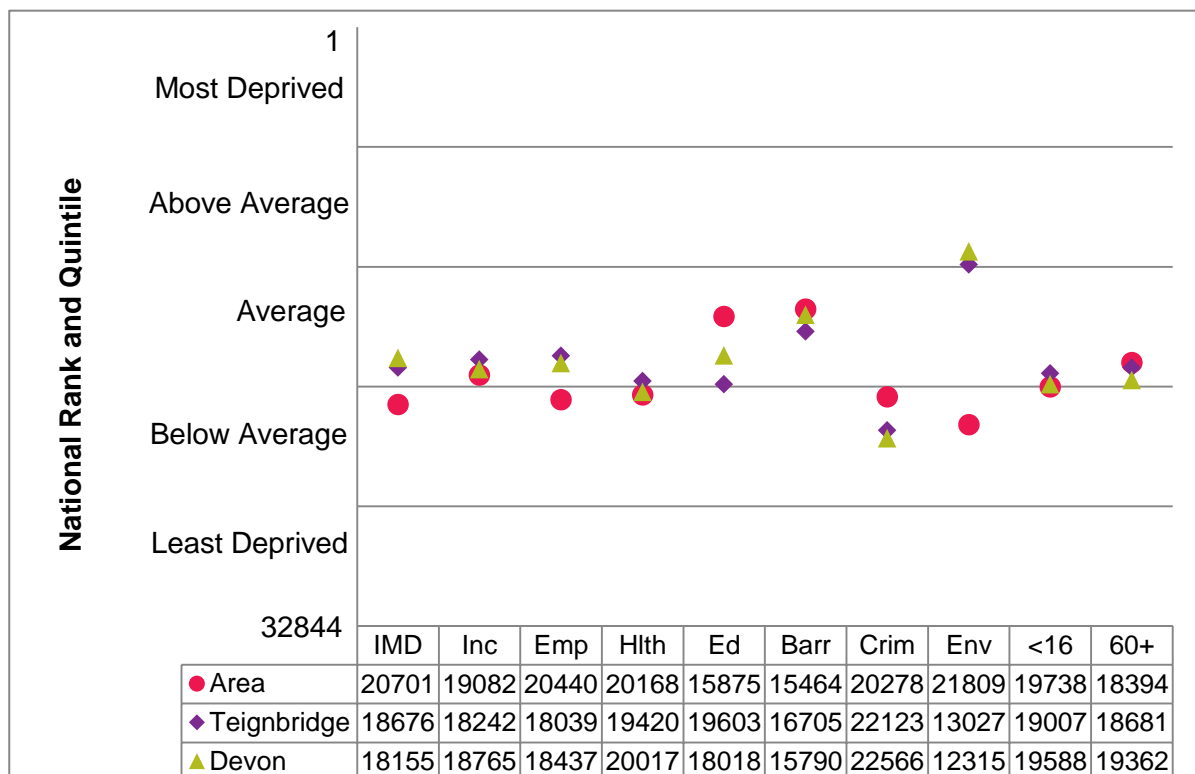
The English Indices of Deprivation measures relative levels of deprivation in small areas of England called Lower Super Output Areas (LSOAs). The overall measure is called the Index of Multiple Deprivation (IMD). This produces an IMD score (bar chart below showing score in 2015) and a national rank out of 32844 LSOAs (trend in national rank shown in line chart below). Deprivation and health are closely connected, with areas with higher levels of deprivation tending to experience poorer health outcomes. Reducing social inequalities in health is a major focus of the work of Health and Wellbeing Boards.



INDICES OF DEPRIVATION DOMAINS

The Indices of Deprivation are comprised of an overall Index of Multiple Deprivation (IMD); seven domains which contribute to the overall index covering income, employment, health, education, barriers to housing and services, crime and living environment; and two supplementary indices relating to income deprivation in children (under 16) & older people (60+).

The following chart compares the area's national rank on the IMD, seven domains and two supplementary indices in 2015, with the average ranks for their local authority district and Devon as a whole. The value axis ranges from the most deprived LSOA in the country (1) to the least deprived LSOA in the country (32844) on a given measure, and the chart is further divided into five sections highlighting the national deprivation group (quintile).



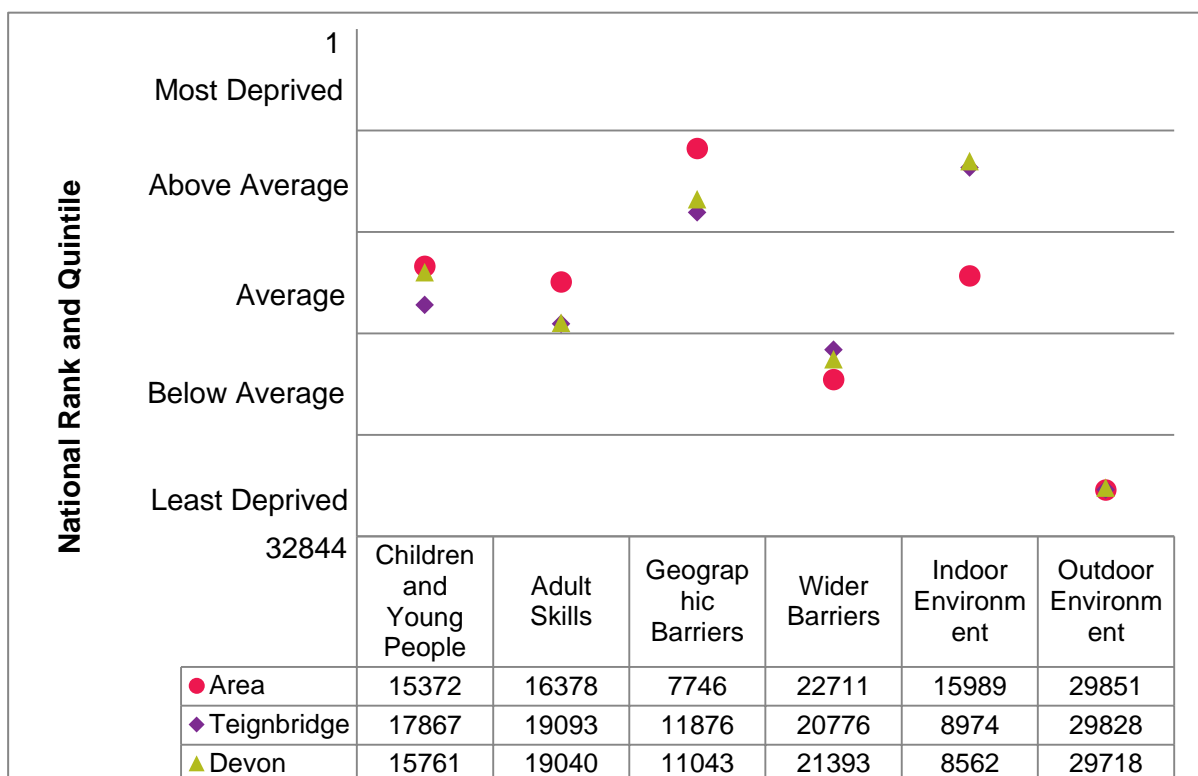
Indices of Deprivation Domain Descriptions

Key	Domain
IMD	Index of Multiple Deprivation.
Inc	Income Domain. Persons dependent on state benefits and tax credits.
Emp	Employment Domain. Persons involuntarily excluded from the labour market.
Hlth	Health Domain. Covers mental health, admissions, illness & premature death.
Ed	Education Domain. Measures educational attainment and participation.
Barr	Barriers to Housing and Services Domain. Covers affordability and distance.
Crim	Crime Domain. Levels of violence, burglary, theft and criminal damage.
Env	Living Environment Domain. Quality of indoor and outdoor environment.
<16	Income Deprivation Affecting Children Index (IDACI). See income.
60+	Income Deprivation Affecting Older People Index (IDAOP). See income.

INDICES OF DEPRIVATION SUB-DOMAINS

Certain domains of the Indices of Deprivation include further sub-domains. The education, skills and training domain includes a children and young people sub-domain, and an adult skills sub-domain. The barriers to housing and services domain includes a geographic barriers sub-domain, and a wider barriers sub-domain. The living environment domain includes an indoor environment (housing conditions) sub-domain, and an outdoor environment sub-domain.

The following chart compares the area's national rank on these six sub-domains in 2015, with the average ranks for their local authority district and Devon as a whole. The value axis ranges from the most deprived LSOA in the country (1) to the least deprived LSOA in the country (32844) on a given measure, and the chart is further divided into five sections highlighting the national deprivation group (quintile).

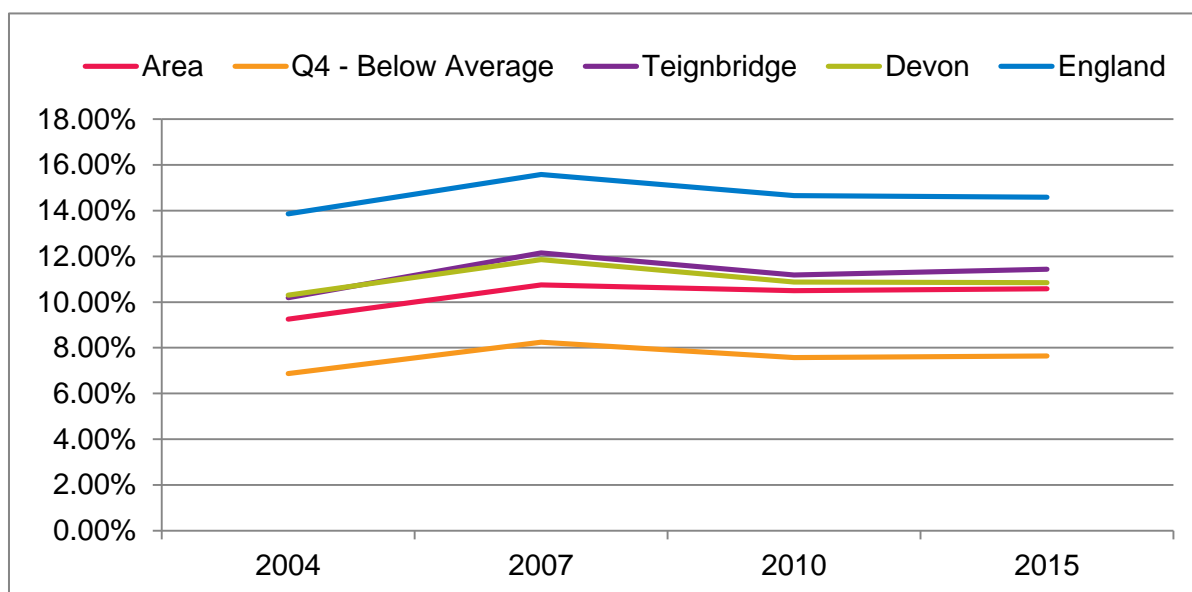
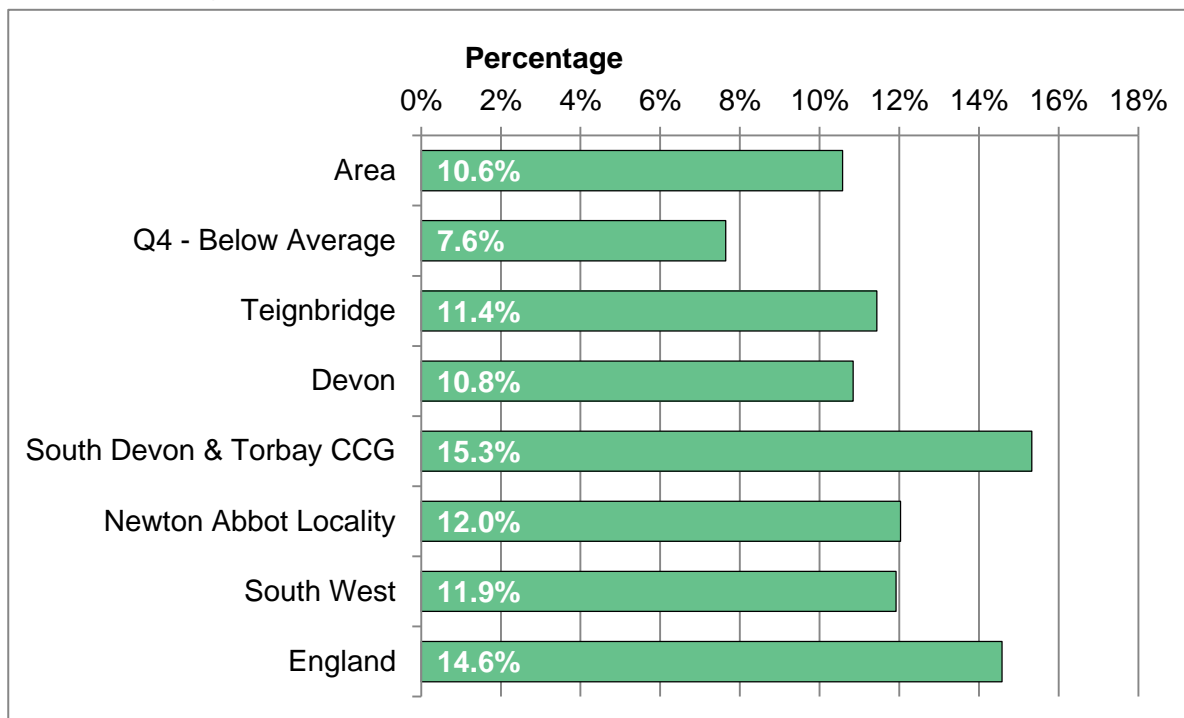


Indices of Deprivation Domain Descriptions

Sub-Domain	Description
Children and Young People	Education sub-domain covering key stage attainment, school absence, and retention in further and higher education
Adult Skills	Education sub-domain covering the proportion of adults with no or low qualifications and English language proficiency
Geographic Barriers	Barriers sub-domain covering road distance to a post office, primary school, general store/supermarket or GP surgery
Wider Barriers	Barriers sub-domain covering household overcrowding, homelessness acceptances and housing affordability
Indoor Environment	Covers central heating availability and poor housing conditions
Outdoor Environment	Covers air quality and pedestrian and cyclist traffic accidents

INCOME DEPRIVATION

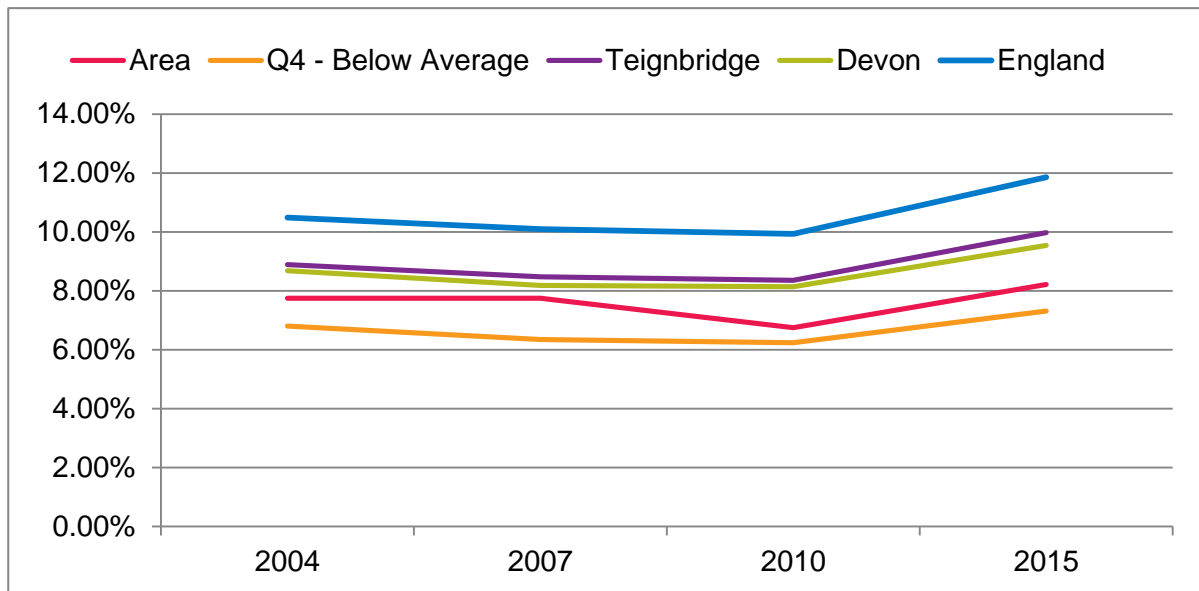
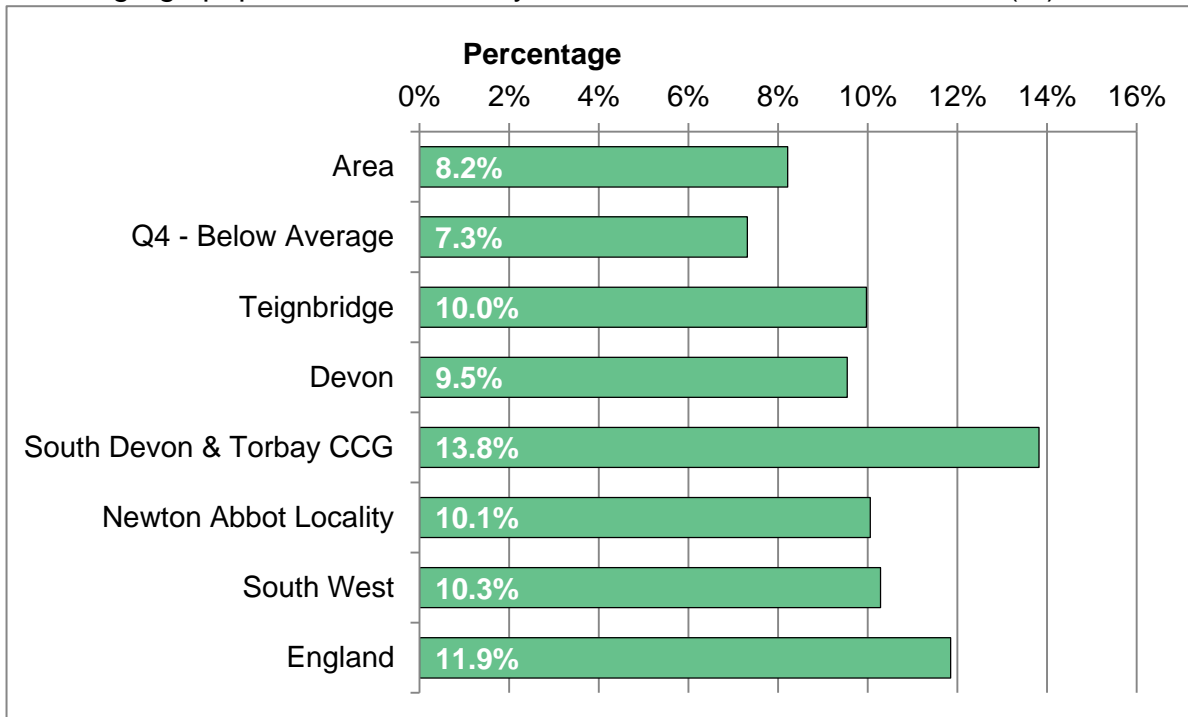
The percentage of the population dependent on benefits or tax credits.



Area	2004	2007	2010	2015
Total per annum	-	-	-	635
Area rate	9.3%	10.8%	10.5%	10.6%
Q4 - Below Average	6.9%	8.2%	7.6%	7.6%
Teignbridge	10.2%	12.2%	11.2%	11.4%
Devon	10.3%	11.8%	10.9%	10.8%
South Devon & Torbay	13.4%	15.6%	14.8%	15.3%
Newton Abbot Locality	10.3%	12.3%	11.5%	12.0%
South West	10.6%	12.3%	11.6%	11.9%
England	13.9%	15.6%	14.7%	14.6%

EMPLOYMENT DEPRIVATION

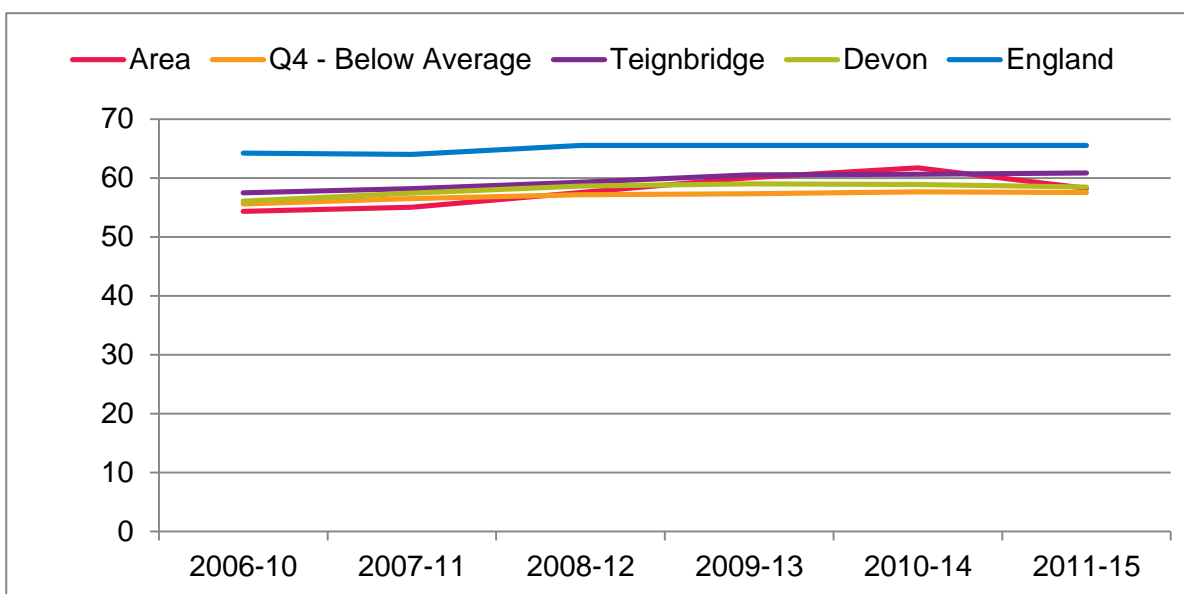
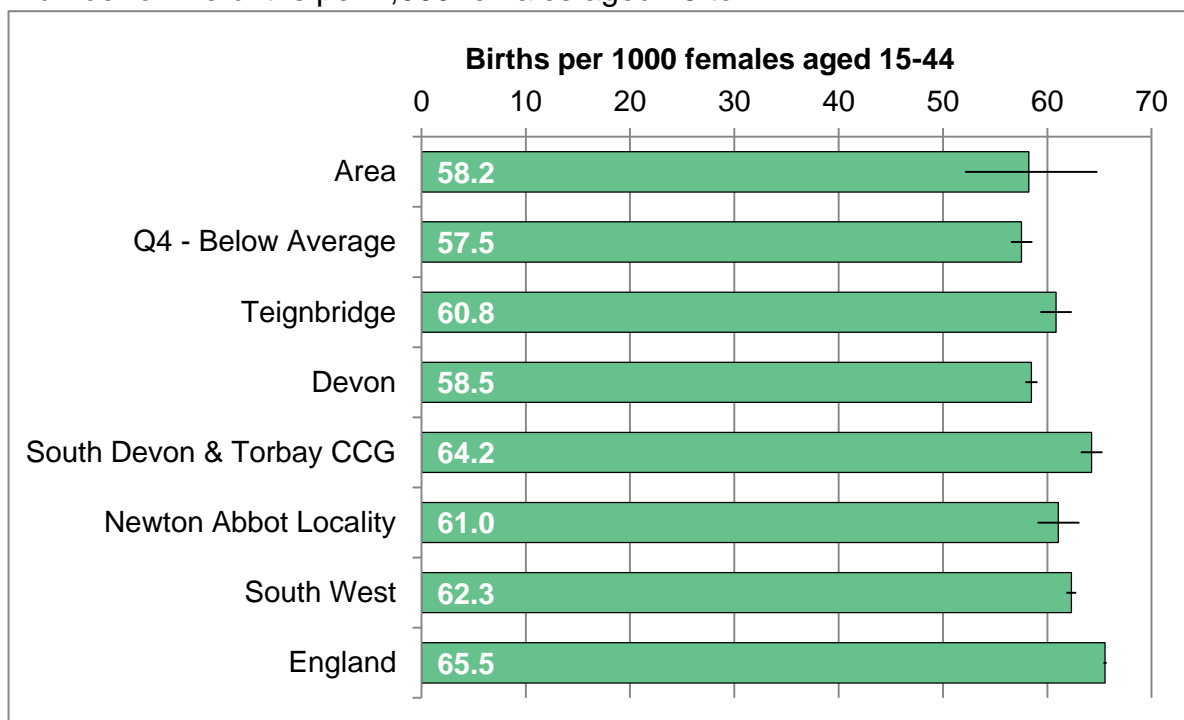
Working-age population involuntarily excluded from the labour market (%).



Area	2004	2007	2010	2015
Total per annum	-	-	-	283
Area rate	7.8%	7.8%	6.8%	8.2%
Q4 - Below Average	6.8%	6.3%	6.2%	7.3%
Teignbridge	8.9%	8.5%	8.4%	10.0%
Devon	8.7%	8.2%	8.1%	9.5%
South Devon & Torbay	11.1%	11.1%	11.3%	13.8%
Newton Abbot Locality	8.1%	8.1%	8.2%	10.1%
South West	8.5%	8.5%	8.5%	10.3%
England	10.5%	10.1%	9.9%	11.9%

BIRTH RATE

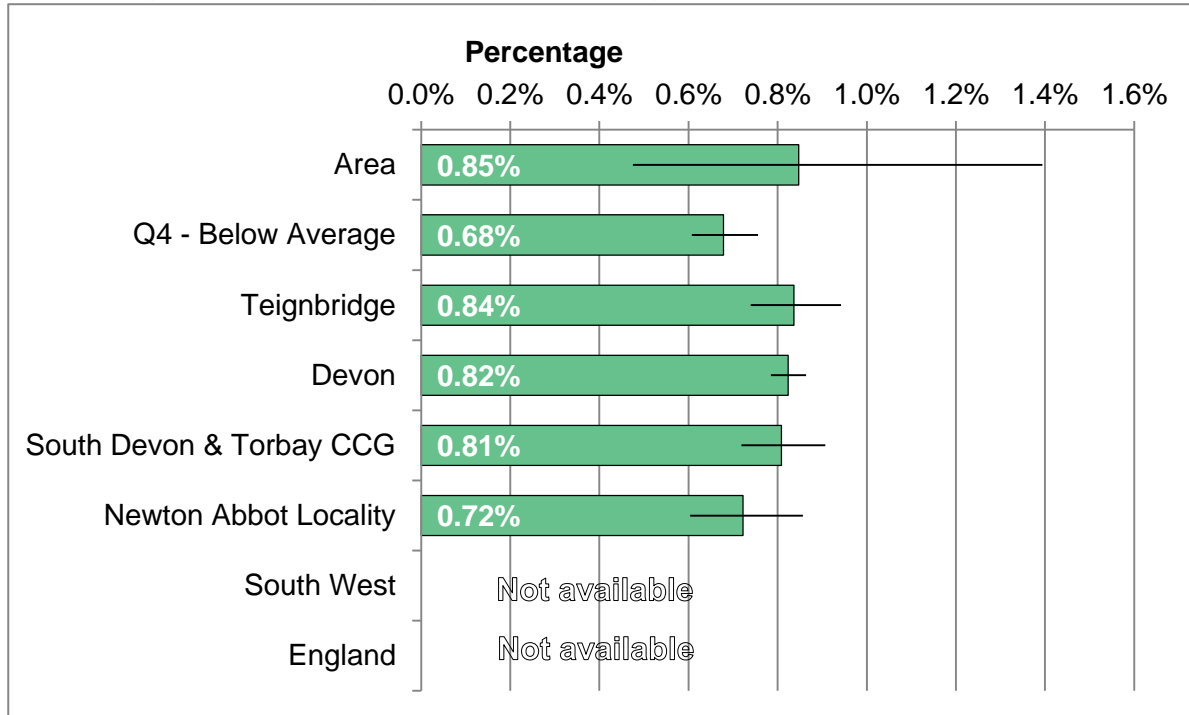
Number of live births per 1,000 females aged 15 to 44.



Area	2006-10	2007-11	2008-12	2009-13	2010-14	2011-15
Births per annum	59	59	62	65	67	63
Area rate	54.3	55.1	57.5	60.1	61.7	58.2
Q4 - Below Average	55.6	56.5	57.2	57.3	57.6	57.5
Teignbridge	57.5	58.2	59.3	60.5	60.6	60.8
Devon	56.1	57.4	58.6	59.0	58.9	58.5
South Devon & Torbay	58.9	60.6	61.9	63.2	63.8	64.2
Newton Abbot Locality	57.8	58.7	59.3	61.5	61.3	61.0
South West	61.0	60.8	62.3	62.3	62.3	62.3
England	64.2	64.0	65.5	65.5	65.5	65.5

EARLY HELP DAF ASSESSMENTS

Percentage of persons aged 0 to 24 receiving early help DAF assessment



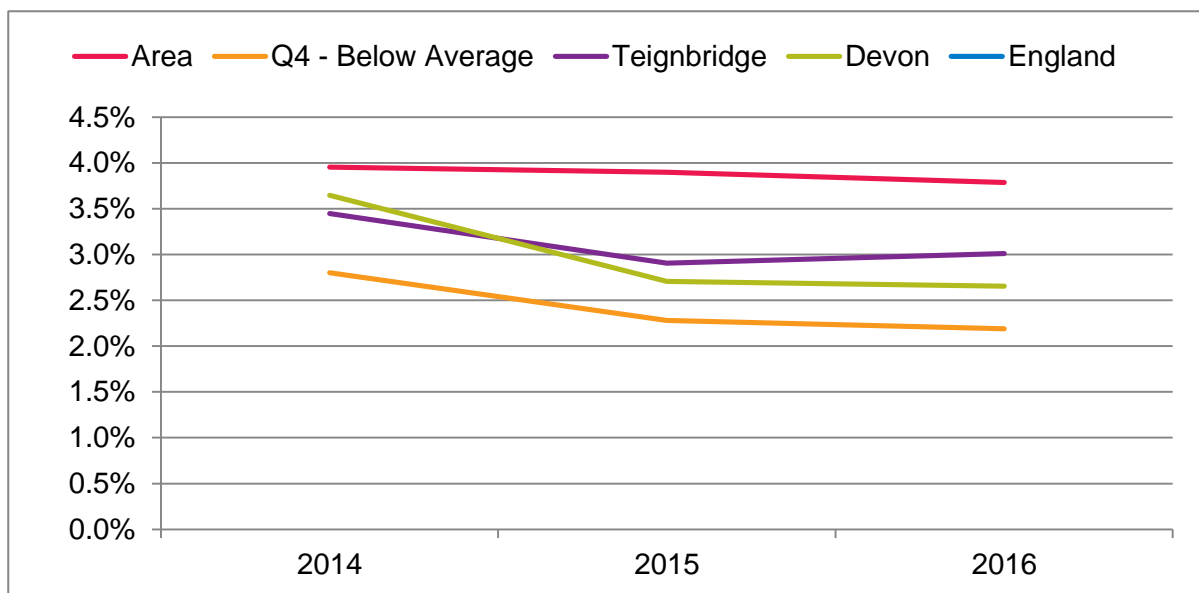
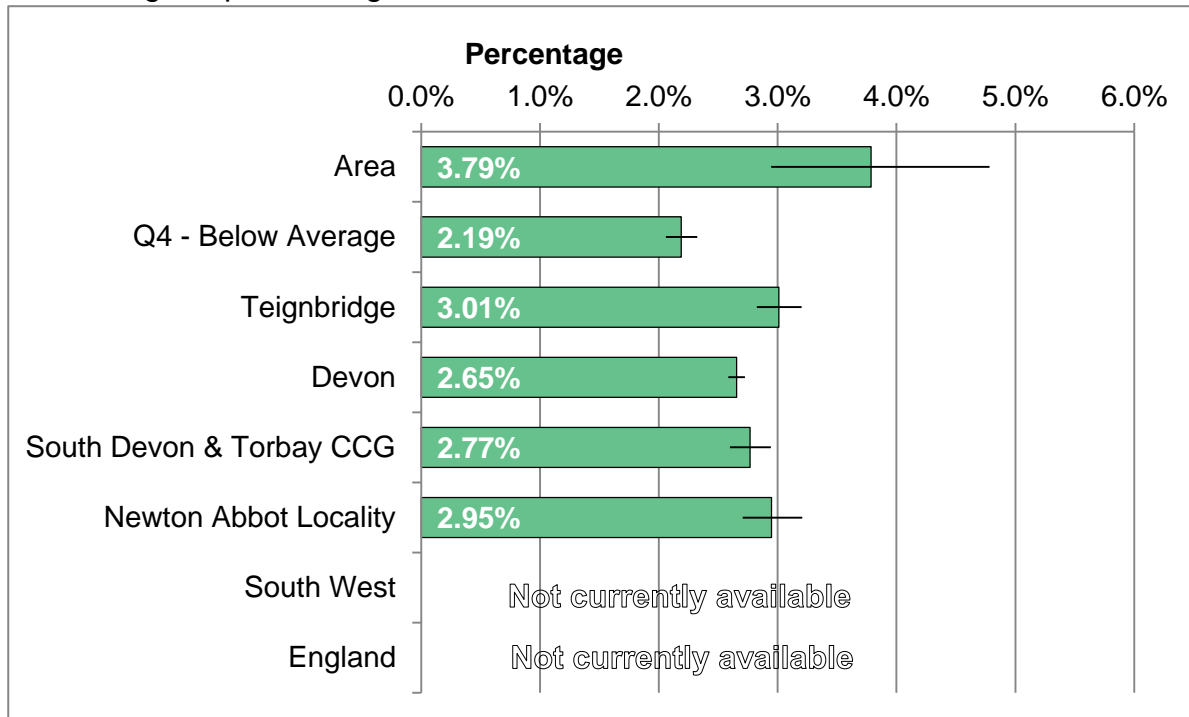
Trend information not currently available

Area	2015
Number per annum	15
Area rate	0.85%
Q4 - Below Average	0.68%
Teignbridge	0.84%
Devon	0.82%
South Devon & Torbay	0.81%
Newton Abbot Locality	0.72%
South West	N/A
England	N/A

CCG figure is Devon County Council component of CCG only

CHILDREN IN NEED

Percentage of persons aged 0 to 24 who are defined as 'in need' in annual census.

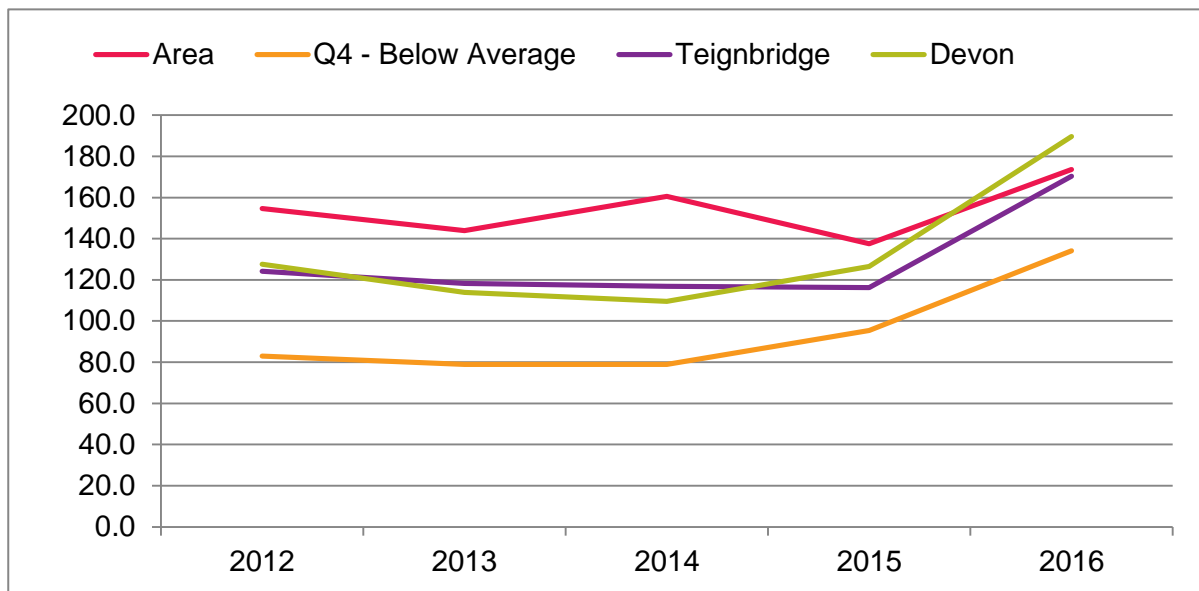
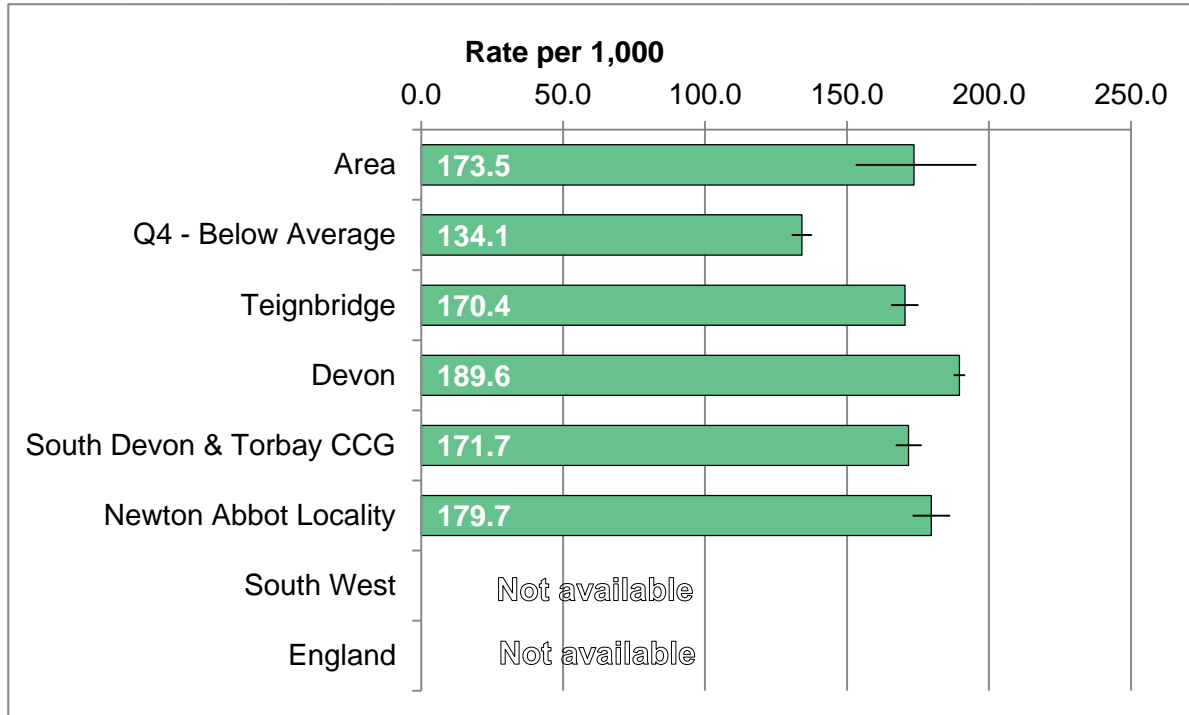


Area	2014	2015	2016
Number per annum	70	69	67
Area rate	3.95%	3.90%	3.79%
Q4 - Below Average	2.80%	2.28%	2.19%
Teignbridge	3.45%	2.91%	3.01%
Devon	3.65%	2.71%	2.65%
South Devon & Torbay	3.40%	2.76%	2.77%
Newton Abbot Locality	3.52%	2.97%	2.95%
South West	N/A	N/A	N/A
England	N/A	N/A	N/A

CCG figure is Devon County Council component of CCG only

SAFEGUARDING ENQUIRIES (MASH)

Multi-Agency Safeguarding Hub (MASH) enquires per 1,000 persons aged 0-17

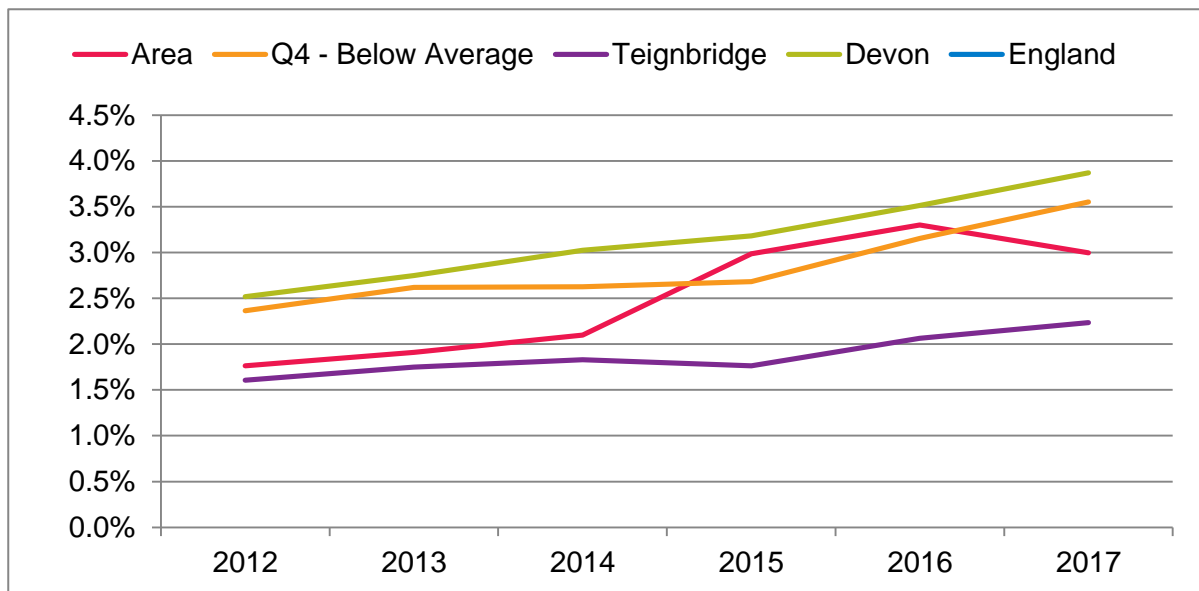
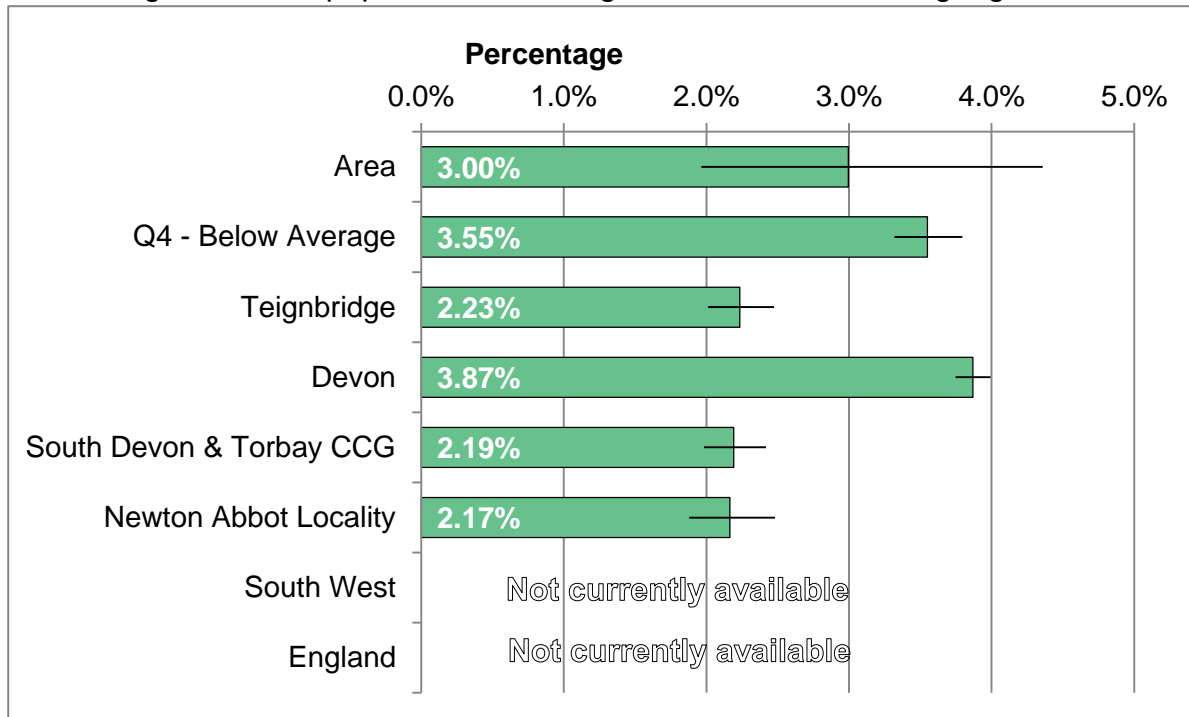


Area	2012	2013	2014	2015	2016
Number per annum	188	181	203	174	219
Area rate	154.6	143.9	160.5	137.5	173.5
Q4 - Below Average	82.9	78.9	78.9	95.4	134.1
Teignbridge	124.2	118.3	116.9	116.2	170.4
Devon	127.7	114.0	109.6	126.4	189.6
South Devon & Torbay	121.4	123.4	113.4	115.5	171.7
Newton Abbot Locality	131.1	126.9	120.9	118.9	179.7
South West	N/A	N/A	N/A	N/A	N/A
England	N/A	N/A	N/A	N/A	N/A

CCG figure is Devon County Council component of CCG only

ENGLISH AS AN ADDITIONAL LANGUAGE

Percentage of school pupils for whom English is not their first language

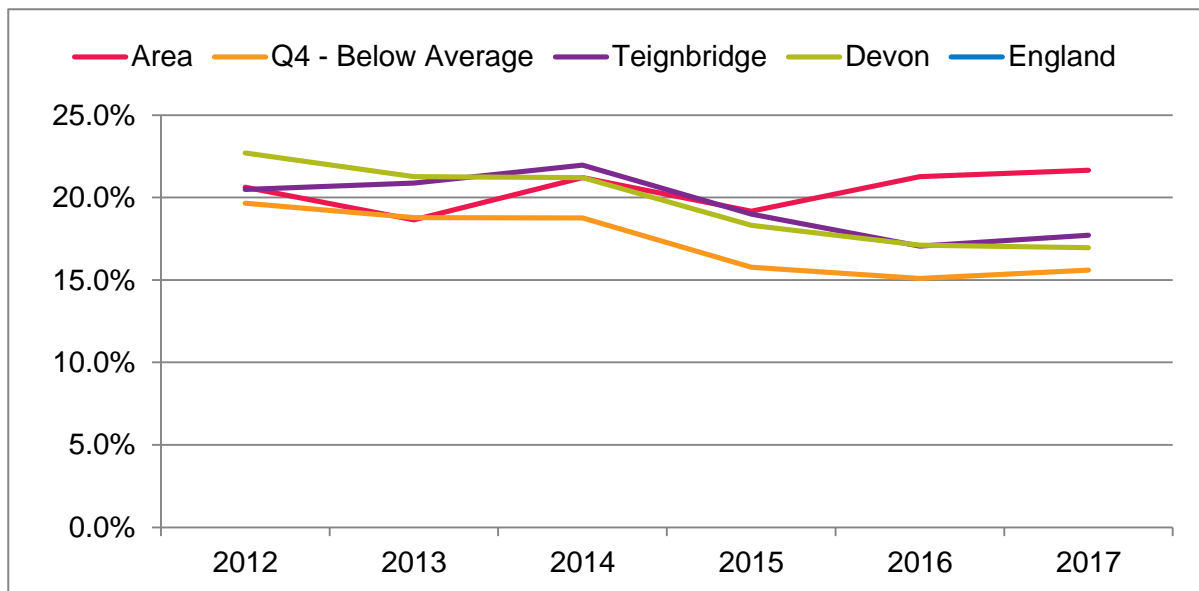
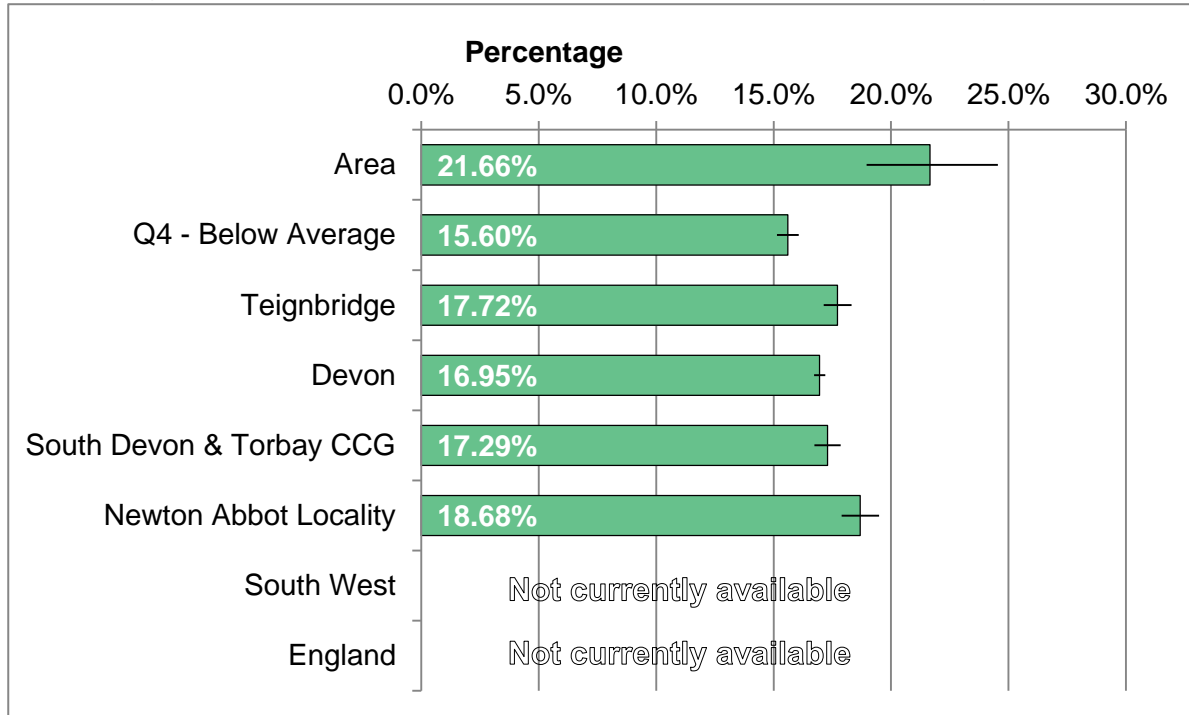


Area	2012	2013	2014	2015	2016	2017
Number per annum	16	17	18	26	29	26
Area rate	1.76%	1.91%	2.10%	2.99%	3.30%	3.00%
Q4 - Below Average	2.36%	2.62%	2.63%	2.68%	3.15%	3.55%
Teignbridge	1.61%	1.75%	1.83%	1.76%	2.06%	2.23%
Devon	2.52%	2.75%	3.02%	3.18%	3.51%	3.87%
South Devon & Torbay	1.65%	1.73%	1.78%	1.66%	1.93%	2.19%
Newton Abbot Locality	1.52%	1.72%	1.70%	1.73%	2.02%	2.17%
South West	N/A	N/A	N/A	N/A	N/A	N/A
England	N/A	N/A	N/A	N/A	N/A	N/A

CCG figure is Devon County Council component of CCG only

SPECIAL EDUCATIONAL NEEDS

Percentage of school pupils with special educational needs (all categories)

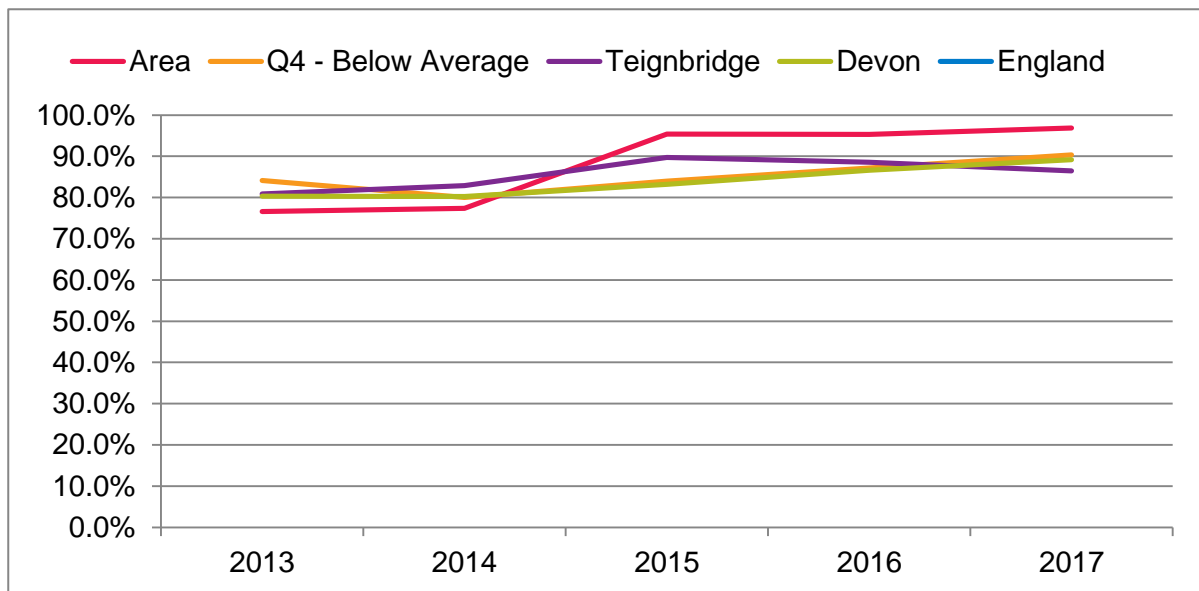
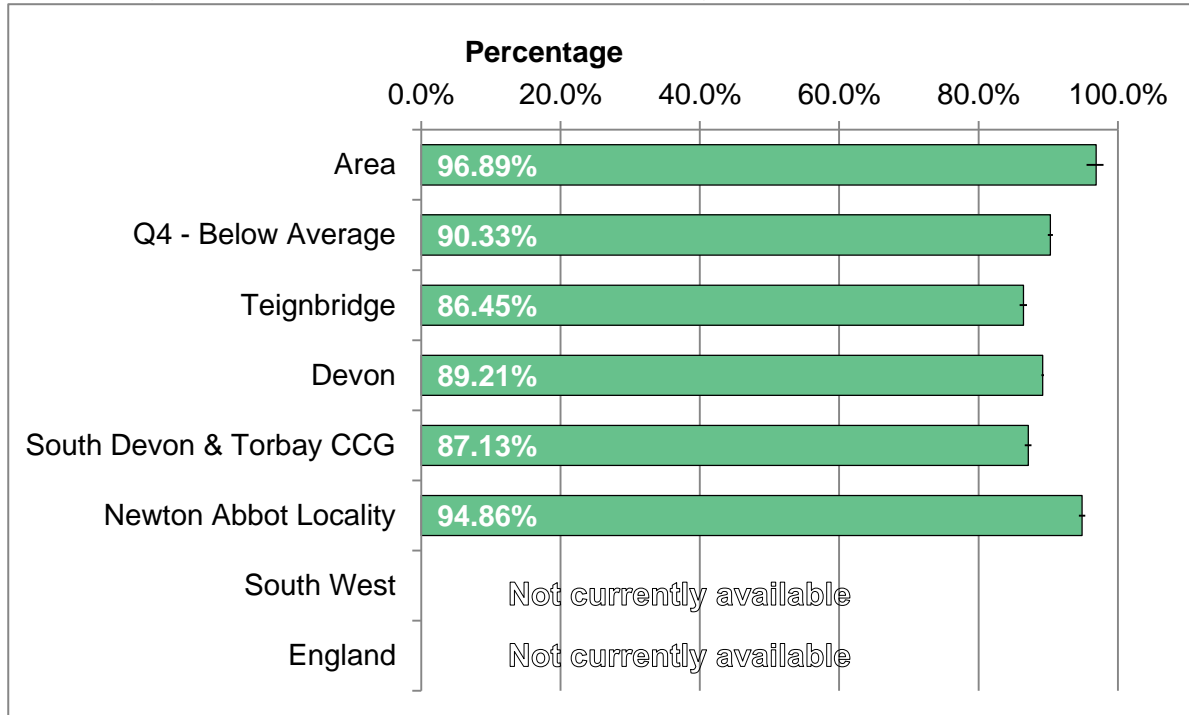


Area	2012	2013	2014	2015	2016	2017
Number per annum	187	166	182	167	187	188
Area rate	20.62%	18.65%	21.21%	19.17%	21.27%	21.66%
Q4 - Below Average	19.66%	18.78%	18.77%	15.78%	15.10%	15.60%
Teignbridge	20.49%	20.87%	21.96%	19.00%	17.06%	17.72%
Devon	22.70%	21.26%	21.20%	18.31%	17.11%	16.95%
South Devon & Torbay	20.26%	20.36%	21.52%	18.88%	16.66%	17.29%
Newton Abbot Locality	19.48%	19.75%	22.26%	19.98%	17.77%	18.68%
South West	N/A	N/A	N/A	N/A	N/A	N/A
England	N/A	N/A	N/A	N/A	N/A	N/A

CCG figure is Devon County Council component of CCG only

PUPILS IN WELL RATED SCHOOLS

Percentage of school pupils in schools rated as good or outstanding by Ofsted

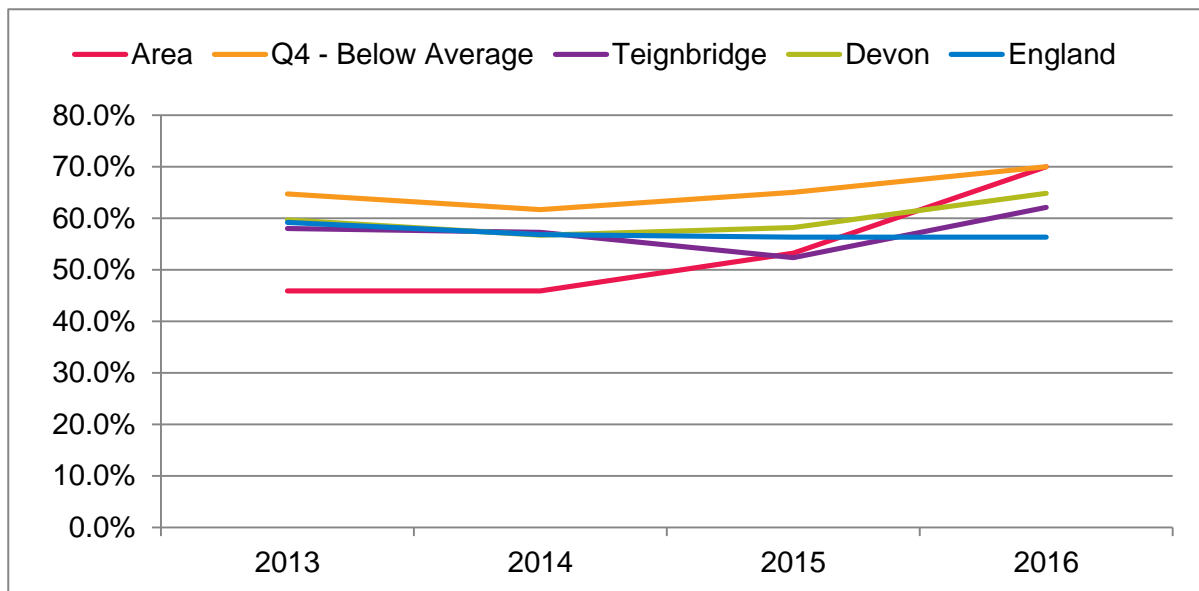
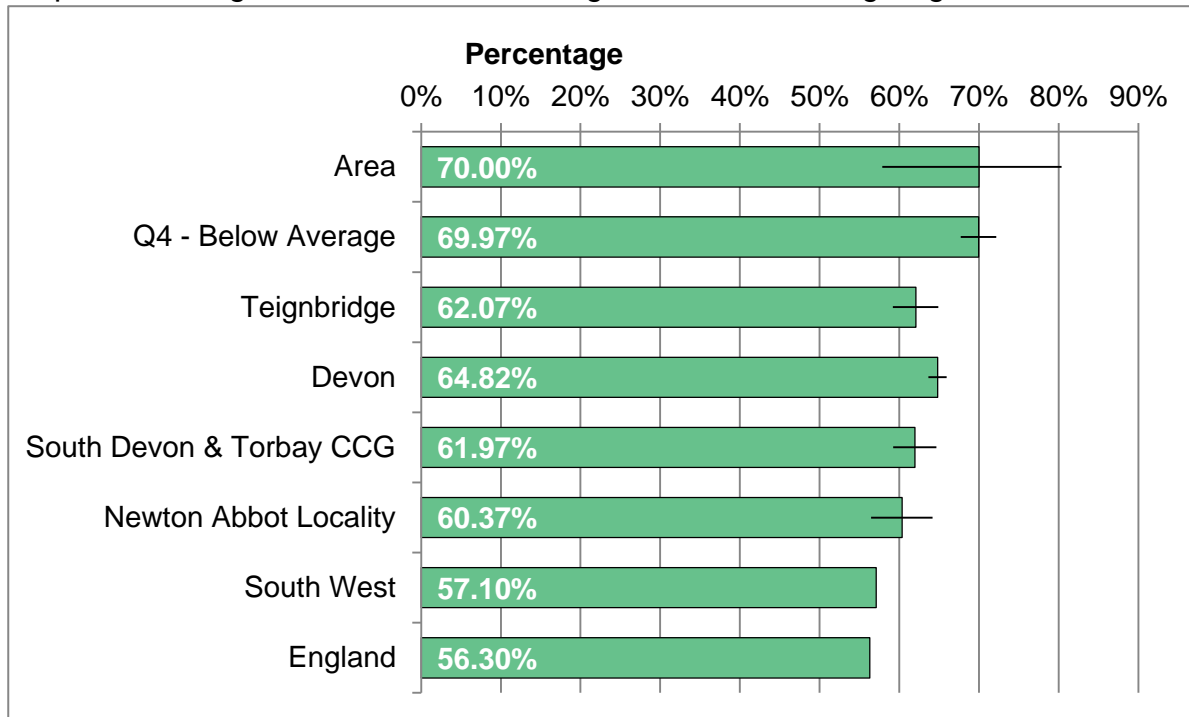


Area	2013	2014	2015	2016	2017
Number per annum	682	664	831	838	841
Area rate	76.63%	77.39%	95.41%	95.34%	96.89%
Q4 - Below Average	84.17%	80.03%	83.99%	87.13%	90.33%
Teignbridge	80.84%	82.86%	89.69%	88.54%	86.45%
Devon	80.31%	80.26%	83.20%	86.64%	89.21%
South Devon & Torbay	72.78%	80.94%	87.62%	86.63%	87.13%
Newton Abbot Locality	83.19%	86.08%	93.21%	90.97%	94.86%
South West	N/A	N/A	N/A	N/A	N/A
England	N/A	N/A	N/A	N/A	N/A

CCG figure is Devon County Council component of CCG only

GCSE ATTAINMENT: FIVE OR MORE A*-C

Pupils achieving five or more GCSEs at grade A*-C including English and Maths

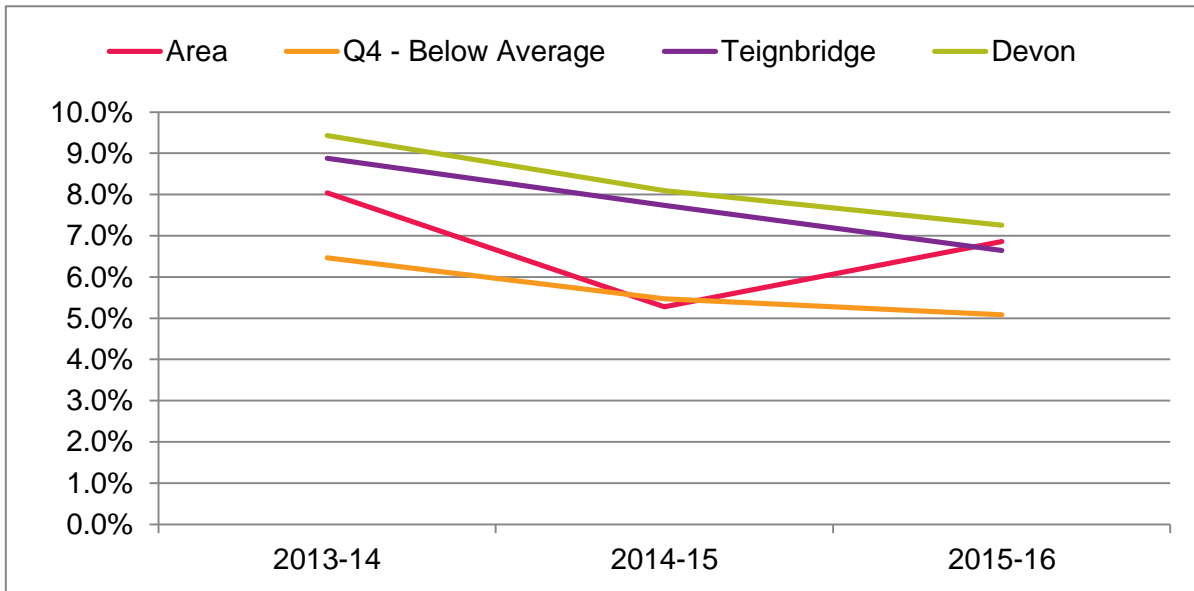
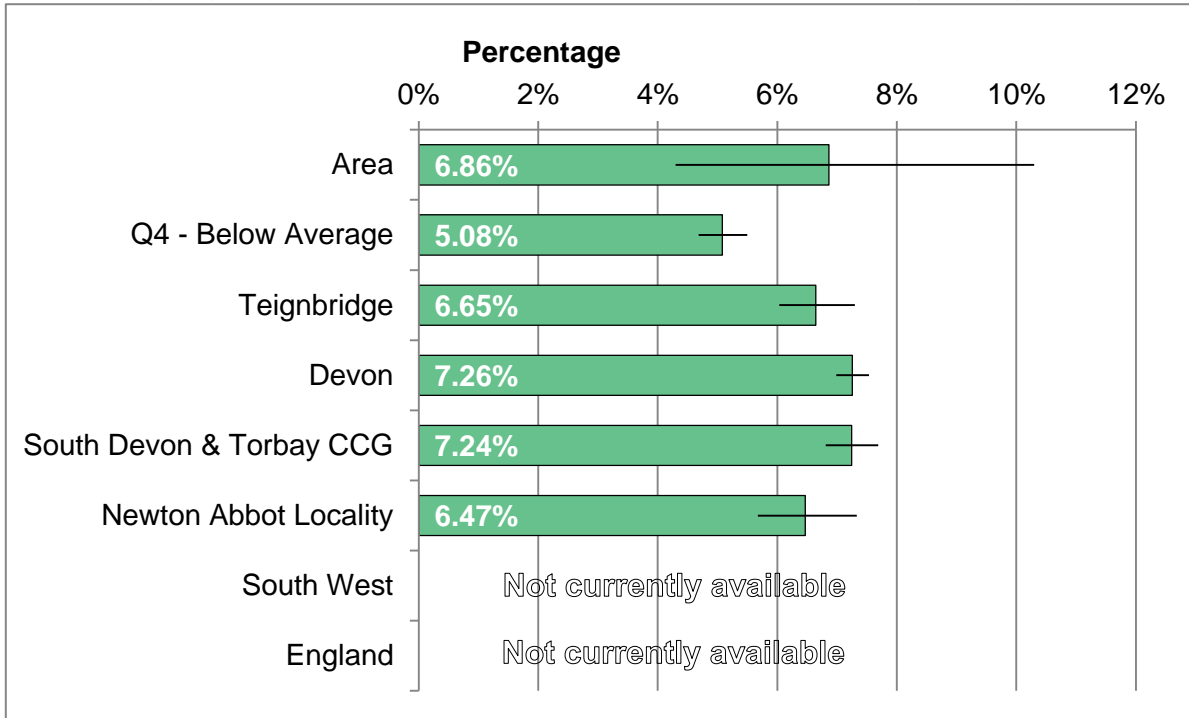


Area	2013	2014	2015	2016
Number per annum	28	28	33	49
Area rate	45.90%	45.90%	53.23%	70.00%
Q4 - Below Average	64.68%	61.69%	64.99%	69.97%
Teignbridge	57.96%	57.25%	52.34%	62.07%
Devon	59.69%	56.71%	58.21%	64.82%
South Devon & Torbay	57.76%	56.13%	54.23%	61.97%
Newton Abbot Locality	56.78%	55.95%	54.62%	60.37%
South West	59.50%	56.70%	57.10%	57.10%
England	59.20%	56.80%	56.30%	56.30%

CCG figure is Devon County Council component of CCG only

NOT IN EDUCATION, EMPLOYMENT OR TRAINING

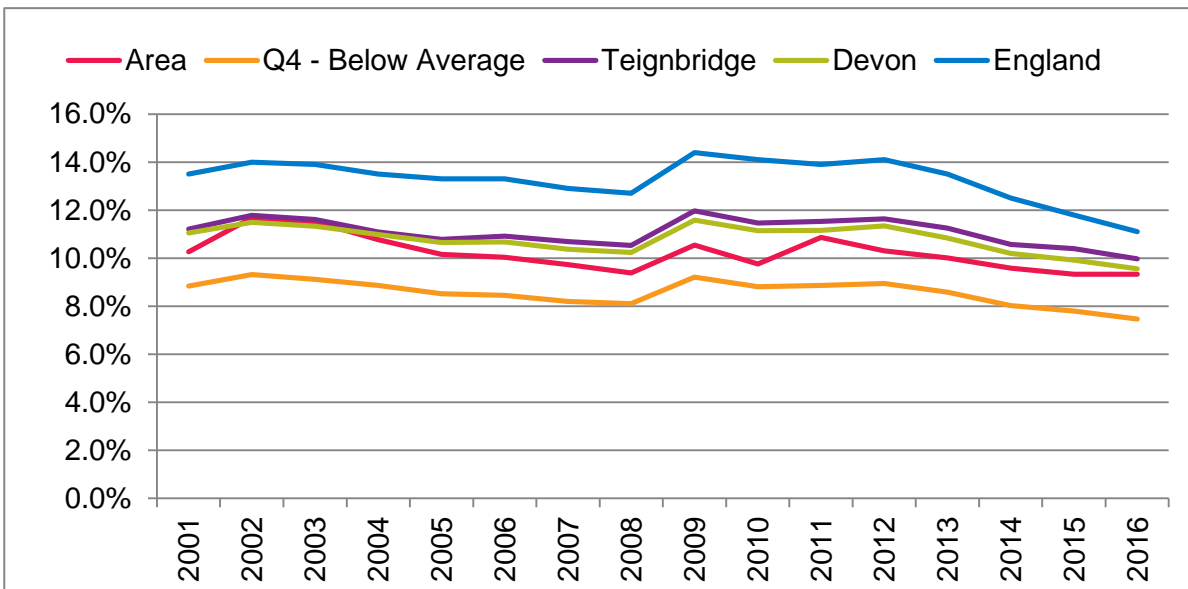
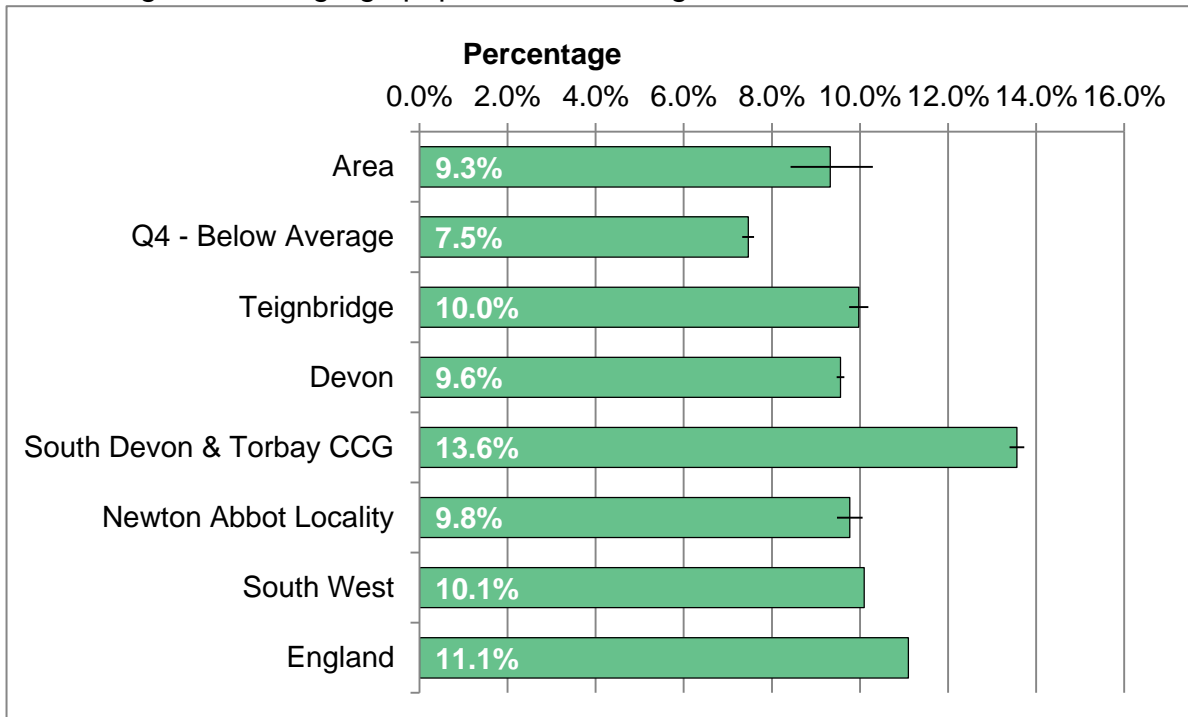
Percentage aged 16-18 not in education, employment or training during year



Area	2013-14	2014-15	2015-16
Number per annum	25	16	21
Area rate	8.04%	5.28%	6.86%
Q4 - Below Average	6.47%	5.47%	5.08%
Teignbridge	8.88%	7.74%	6.65%
Devon	9.43%	8.10%	7.26%
South Devon & Torbay CCG	9.20%	8.22%	7.24%
Newton Abbot Locality	9.09%	8.02%	6.47%
South West	N/A	N/A	N/A
England	N/A	N/A	N/A

WORKING AGE BENEFIT CLAIMANT RATE

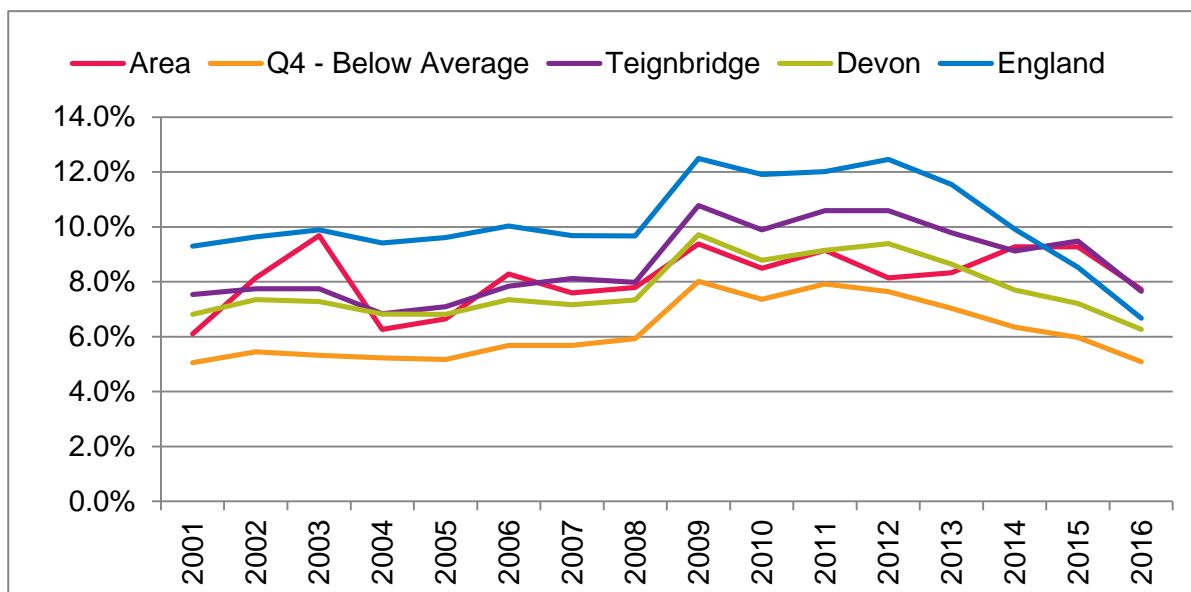
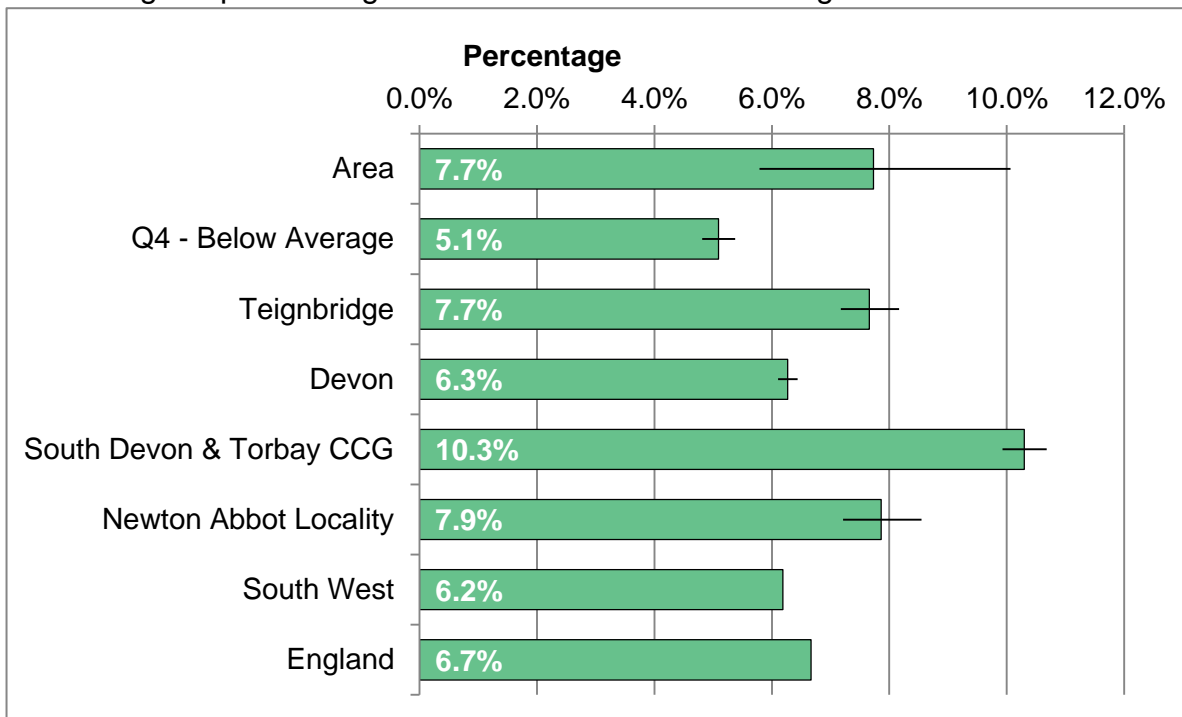
Percentage of working-age population receiving benefits.



Area	2011	2012	2013	2014	2015	2016
Total claimants	410	390	380	365	355	355
Area rate	10.9%	10.3%	10.0%	9.6%	9.3%	9.3%
Q4 - Below Average	8.9%	8.9%	8.6%	8.0%	7.8%	7.5%
Teignbridge	11.5%	11.6%	11.3%	10.6%	10.4%	10.0%
Devon	11.2%	11.3%	10.8%	10.2%	9.9%	9.6%
South Devon & Torbay	15.6%	15.8%	15.4%	14.5%	14.1%	13.6%
Newton Abbot Locality	11.1%	11.2%	10.9%	10.4%	10.2%	9.8%
South West	12.0%	12.2%	11.8%	11.0%	10.6%	10.1%
England	13.9%	14.1%	13.5%	12.5%	11.8%	11.1%

AGED 16 TO 24 BENEFIT CLAIMANT RATE

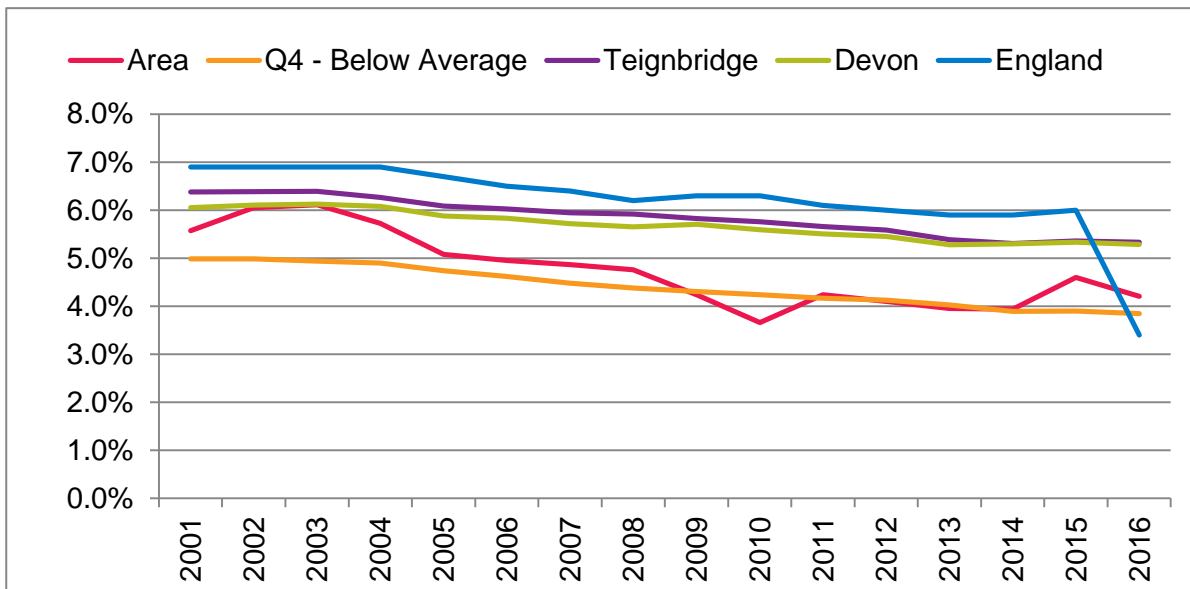
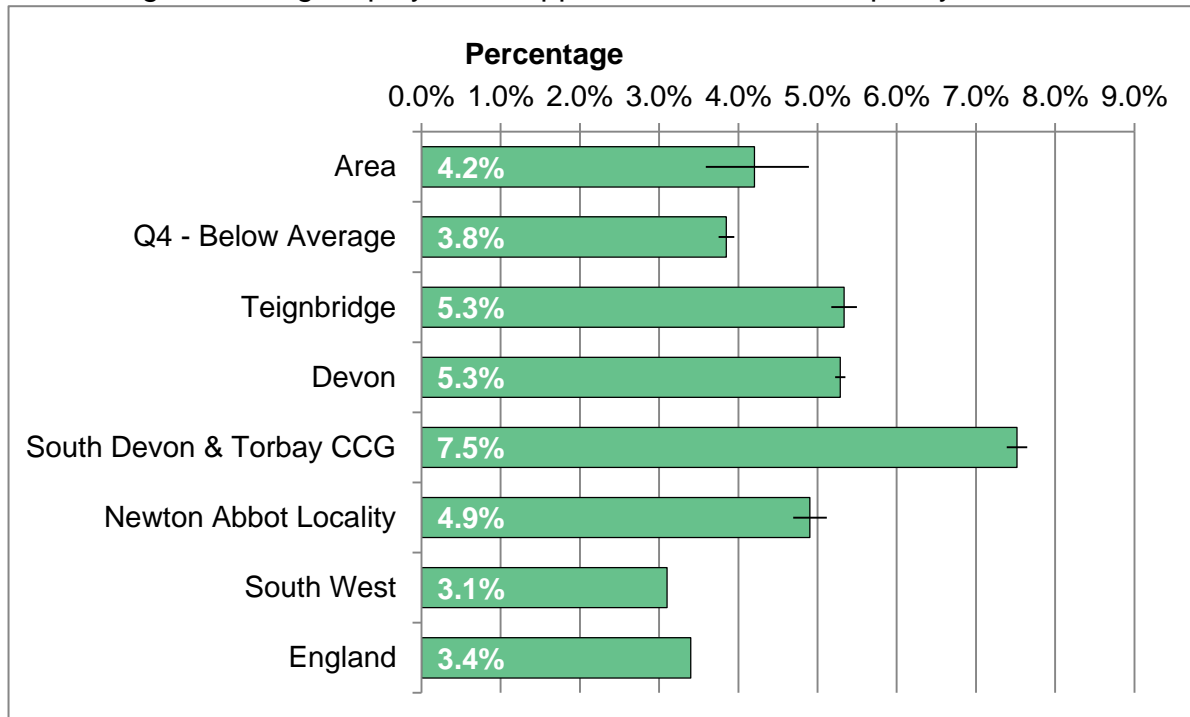
Percentage of persons aged between 16 and 24 receiving benefits.



Area	2011	2012	2013	2014	2015	2016
Total claimants	60	55	55	60	60	50
Area rate	9.1%	8.1%	8.3%	9.3%	9.3%	7.7%
Q4 - Below Average	7.9%	7.6%	7.0%	6.3%	6.0%	5.1%
Teignbridge	10.6%	10.6%	9.8%	9.1%	9.5%	7.7%
Devon	9.1%	9.4%	8.6%	7.7%	7.2%	6.3%
South Devon & Torbay	13.8%	14.2%	13.6%	12.6%	12.2%	10.3%
Newton Abbot Locality	10.7%	10.4%	10.3%	9.8%	10.0%	7.9%
South West	10.0%	10.5%	9.8%	8.6%	7.8%	6.2%
England	12.0%	12.5%	11.6%	9.9%	8.5%	6.7%

ESA OR INCAPACITY BENEFIT CLAIMANT RATE

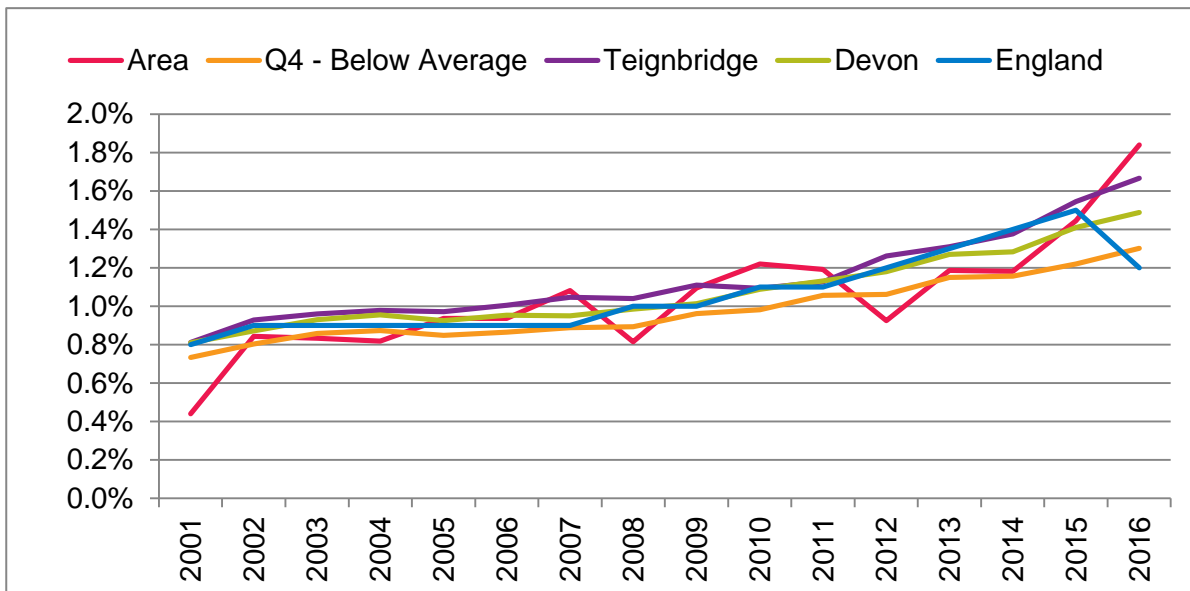
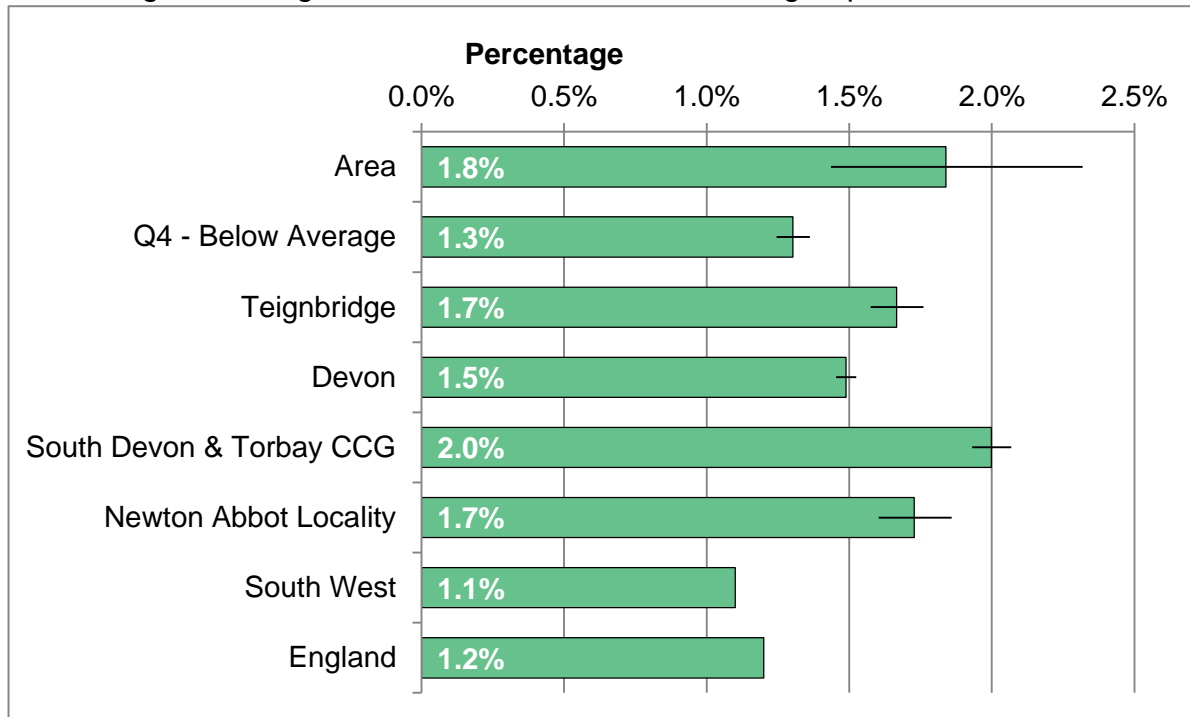
Percentage receiving employment support allowance or incapacity benefit.



Area	2011	2012	2013	2014	2015	2016
Total claimants	160	155	150	150	175	160
Area rate	4.2%	4.1%	4.0%	3.9%	4.6%	4.2%
Q4 - Below Average	4.2%	4.1%	4.0%	3.9%	3.9%	3.8%
Teignbridge	5.7%	5.6%	5.4%	5.3%	5.4%	5.3%
Devon	5.5%	5.5%	5.3%	5.3%	5.3%	5.3%
South Devon & Torbay	7.6%	7.5%	7.4%	7.4%	7.6%	7.5%
Newton Abbot Locality	5.1%	5.2%	5.0%	5.0%	5.1%	4.9%
South West	5.8%	5.7%	5.6%	5.6%	5.7%	3.1%
England	6.1%	6.0%	5.9%	5.9%	6.0%	3.4%

CARERS WORKING AGE CLIENT GROUP

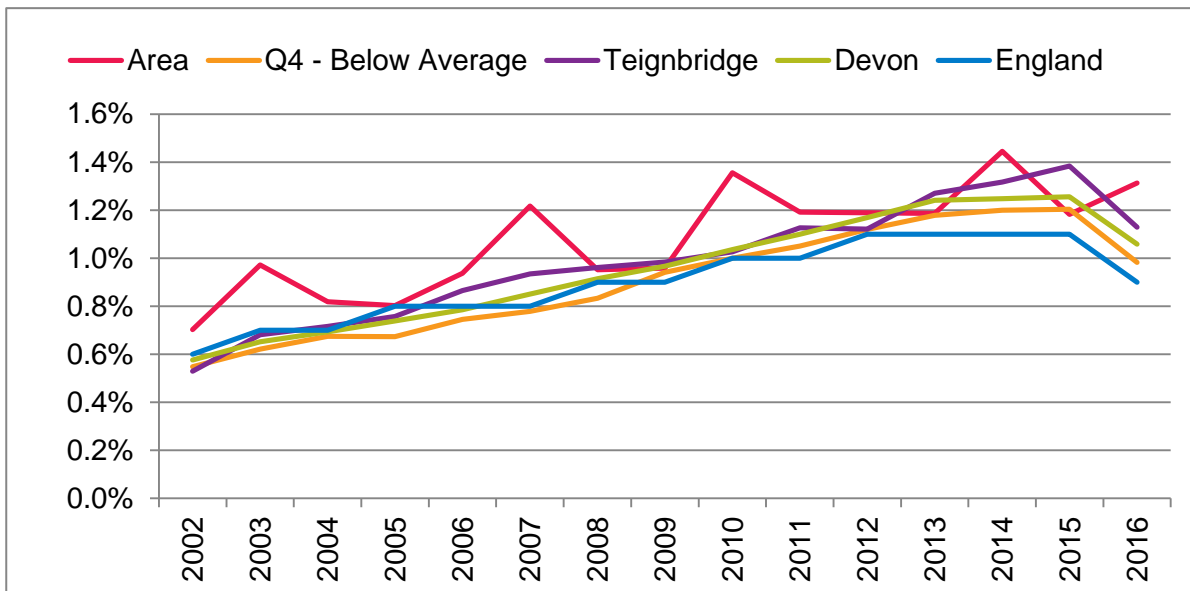
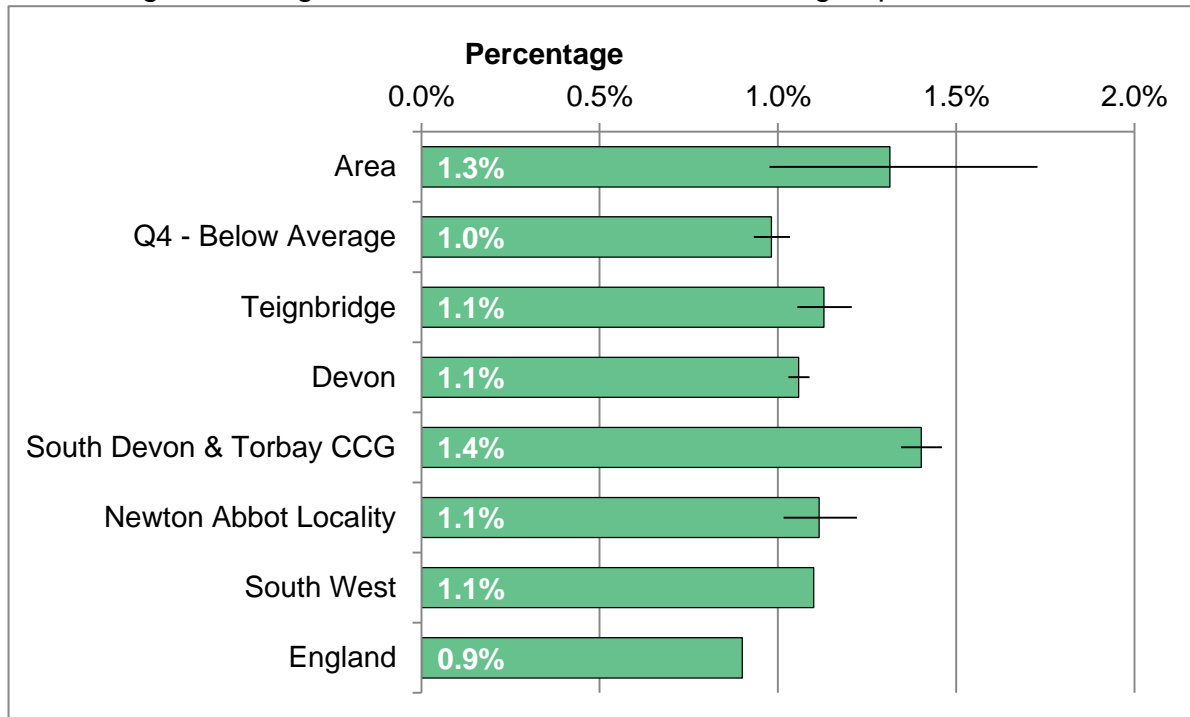
Percentage receiving benefits who are in carers client group.



Area	2011	2012	2013	2014	2015	2016
Total claimants	45	35	45	45	55	70
Area rate	1.2%	0.9%	1.2%	1.2%	1.4%	1.8%
Q4 - Below Average	1.1%	1.1%	1.1%	1.2%	1.2%	1.3%
Teignbridge	1.1%	1.3%	1.3%	1.4%	1.5%	1.7%
Devon	1.1%	1.2%	1.3%	1.3%	1.4%	1.5%
South Devon & Torbay	1.4%	1.5%	1.6%	1.7%	1.9%	2.0%
Newton Abbot Locality	1.1%	1.2%	1.3%	1.4%	1.6%	1.7%
South West	1.0%	1.1%	1.2%	1.2%	1.3%	1.1%
England	1.1%	1.2%	1.3%	1.4%	1.5%	1.2%

DISABLED WORKING AGE CLIENT GROUP

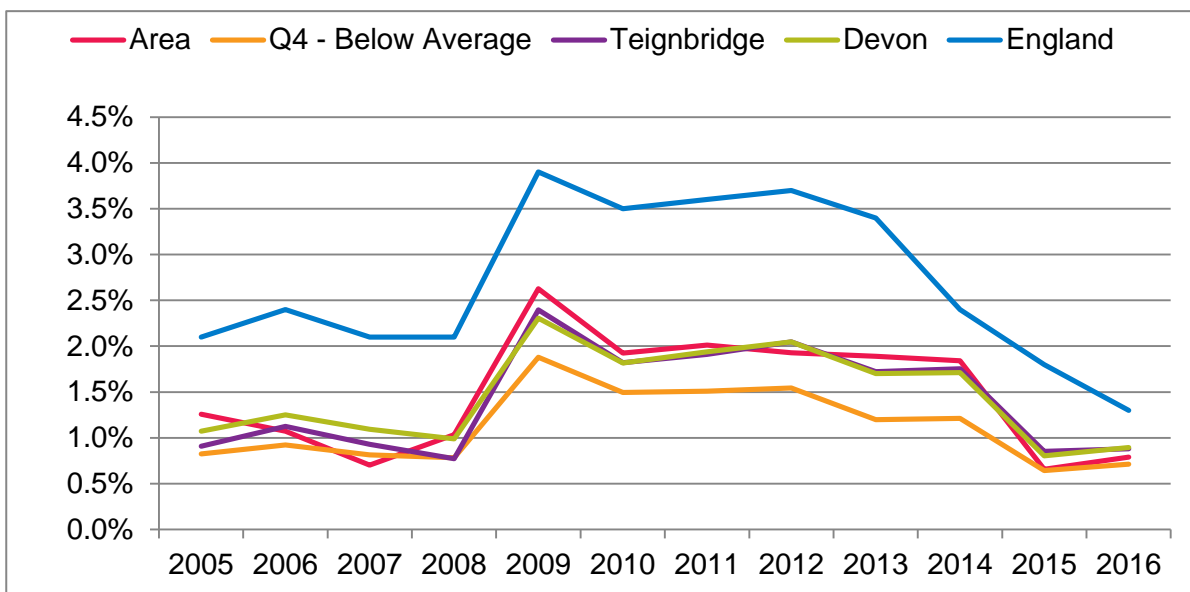
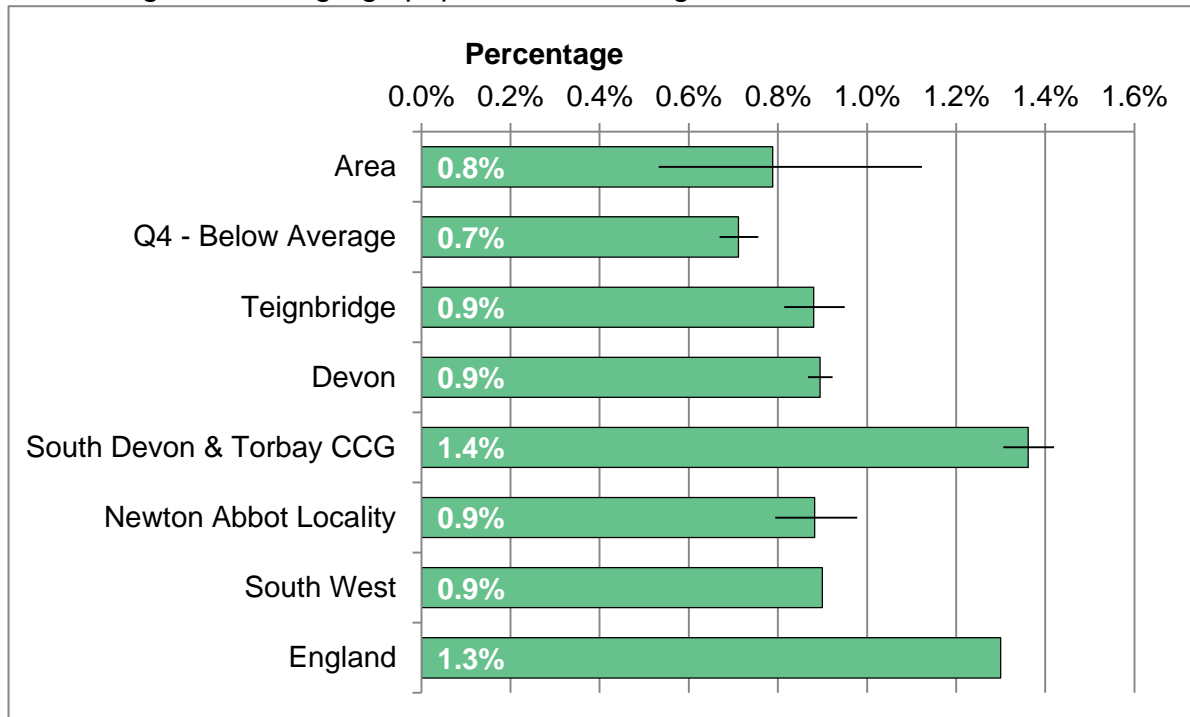
Percentage receiving benefits who are in disabled client group.



Area	2011	2012	2013	2014	2015	2016
Total claimants	45	45	45	55	45	50
Area rate	1.2%	1.2%	1.2%	1.4%	1.2%	1.3%
Q4 - Below Average	1.1%	1.1%	1.2%	1.2%	1.2%	1.0%
Teignbridge	1.1%	1.1%	1.3%	1.3%	1.4%	1.1%
Devon	1.1%	1.2%	1.2%	1.2%	1.3%	1.1%
South Devon & Torbay	1.4%	1.4%	1.6%	1.6%	1.7%	1.4%
Newton Abbot Locality	1.2%	1.1%	1.3%	1.3%	1.3%	1.1%
South West	1.0%	1.1%	1.2%	1.2%	1.2%	1.1%
England	1.0%	1.1%	1.1%	1.1%	1.1%	0.9%

JOBSEEKERS ALLOWANCE CLAIMANT RATE

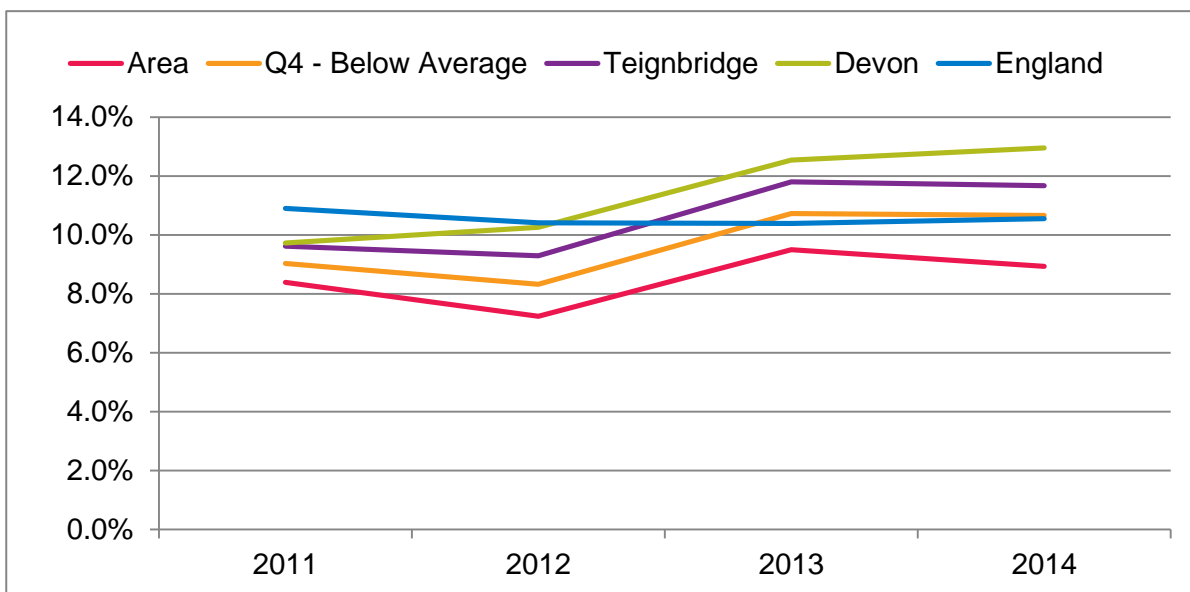
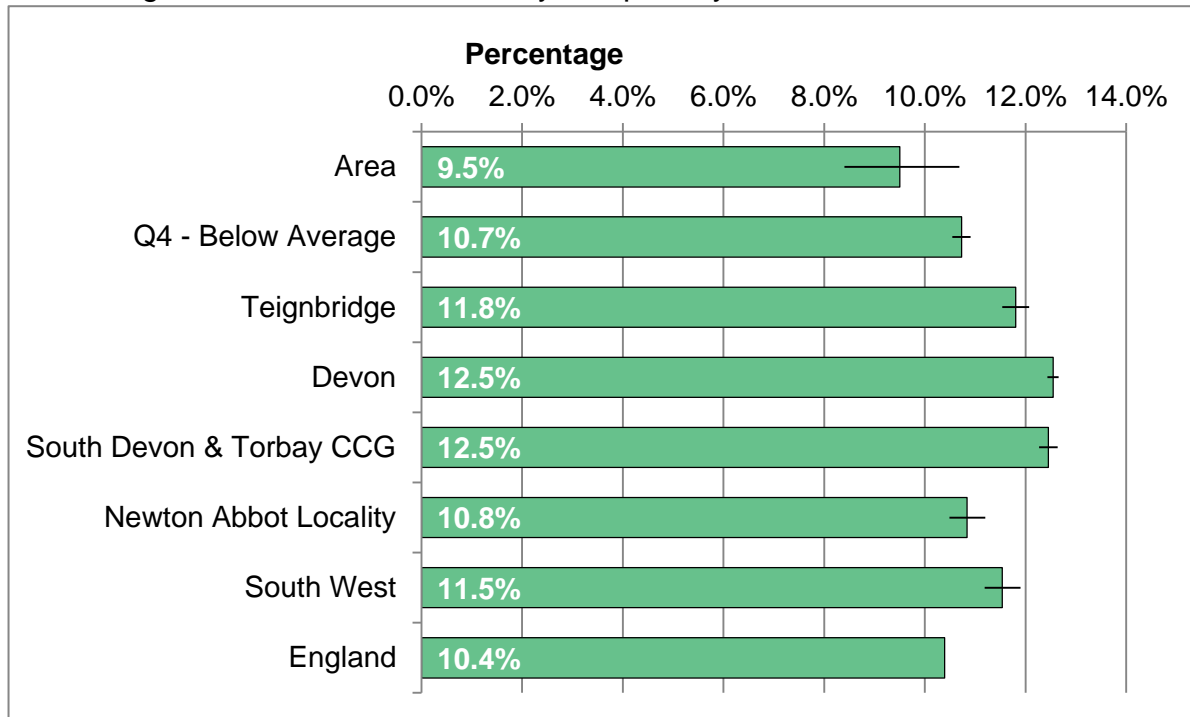
Percentage of working-age population receiving Jobseekers Allowance.



Area	2011	2012	2013	2014	2015	2016
Total claimants	76	73	69	70	25	30
Area rate	2.0%	1.9%	1.9%	1.8%	0.7%	0.8%
Q4 - Below Average	1.5%	1.5%	1.2%	1.2%	0.6%	0.7%
Teignbridge	1.9%	2.0%	1.7%	1.8%	0.9%	0.9%
Devon	1.9%	2.0%	1.7%	1.7%	0.8%	0.9%
South Devon & Torbay	3.0%	3.2%	2.7%	2.8%	1.3%	1.4%
Newton Abbot Locality	1.9%	2.1%	1.8%	1.8%	0.8%	0.9%
South West	2.4%	2.6%	2.3%	1.5%	1.1%	0.9%
England	3.6%	3.7%	3.4%	2.4%	1.8%	1.3%

FUEL POVERTY

Percentage of households affected by fuel poverty.

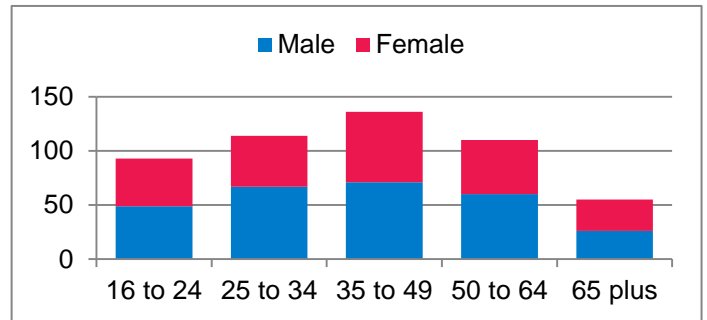


Area	2011	2012	2013	2014
Fuel poor households	199	186	249	234
Area rate	8.4%	7.2%	9.5%	8.9%
Q4 - Below Average	9.0%	8.3%	10.7%	10.7%
Teignbridge	9.6%	9.3%	11.8%	11.7%
Devon	9.7%	10.3%	12.5%	13.0%
South Devon & Torbay	10.7%	9.8%	12.5%	11.9%
Newton Abbot Locality	9.1%	8.5%	10.8%	10.7%
South West	9.4%	9.4%	11.5%	12.2%
England	10.9%	10.4%	10.4%	10.6%

HEALTH-RELATED BEHAVIOUR ESTIMATES

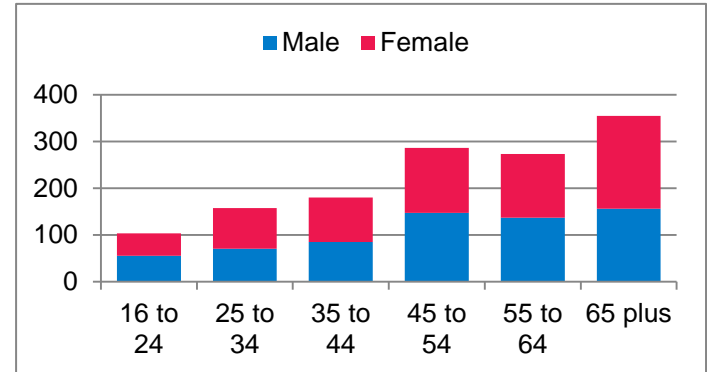
Smoking: Estimated number of current smokers aged 16 and over

Age	Male	Female	Total
16 to 24	49	44	93
25 to 34	67	47	114
35 to 49	71	65	136
50 to 64	60	50	110
65 plus	26	29	55
Total	273	235	508
Percent	11.4%	9.0%	10.1%



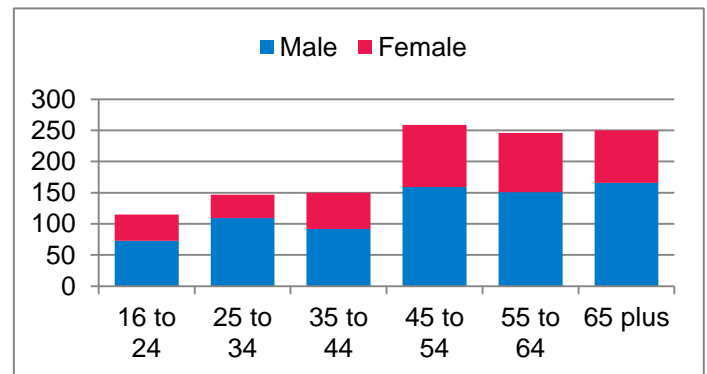
Obesity: Estimated number aged 16 and over with a BMI of 30 or more

Age	Male	Female	Total
16 to 24	55	48	103
25 to 34	70	87	157
35 to 44	85	95	180
45 to 54	147	139	286
55 to 64	137	136	273
65 plus	156	199	355
Total	650	704	1354
Percent	27.1%	27.1%	27.1%



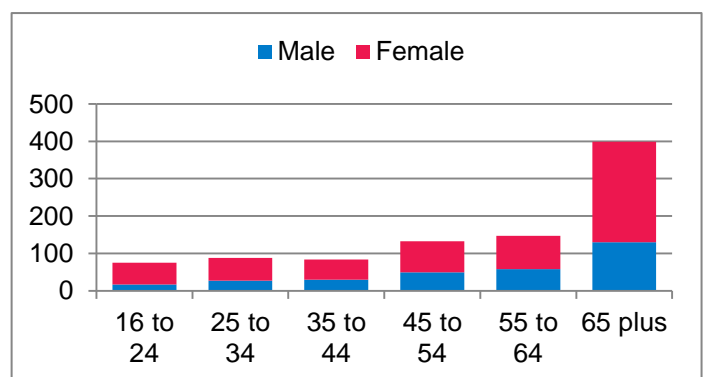
Alcohol: Increasing and higher risk drinking in persons aged 16 and over

Age	Male	Female	Total
16 to 24	73	42	115
25 to 34	109	38	147
35 to 44	92	58	150
45 to 54	159	100	259
55 to 64	151	95	246
65 plus	166	84	250
Total	750	417	1167
Percent	31.4%	16.1%	23.4%



Physical Inactivity: Less than 30 minutes of moderate physical activity per week

Age	Male	Female	Total
16 to 24	17	58	75
25 to 34	27	61	88
35 to 44	30	54	84
45 to 54	49	83	132
55 to 64	58	89	147
65 plus	130	269	399
Total	311	614	925
Percent	13.0%	23.6%	18.5%



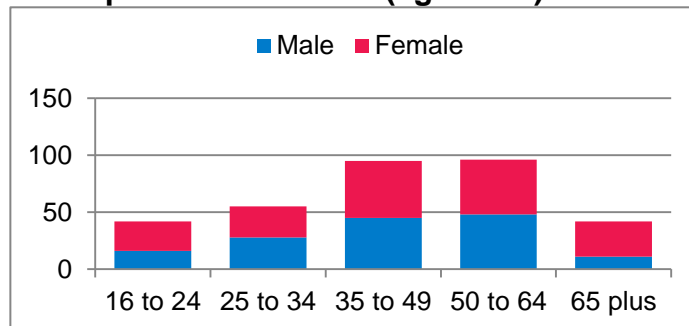
MENTAL ILL HEALTH ESTIMATES

Modelled Self-Reported Wellbeing Estimates

Measure	Number	Percent	Criteria
Low Happiness Score	1688	28%	0 to 4 on a 10 point scale
Low Worthwhile Score	1088	18%	0 to 4 on a 10 point scale
Low Life Satisfaction Score	1360	22%	0 to 4 on a 10 point scale

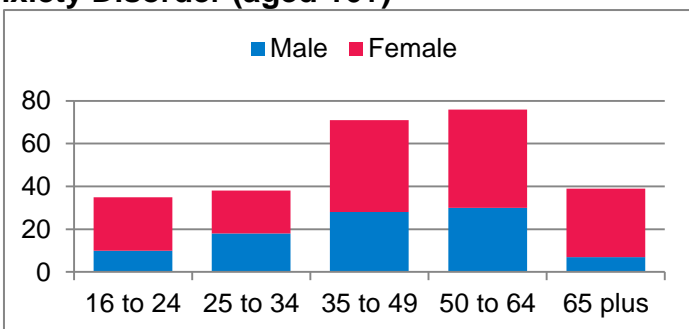
Estimated Prevalence of Mixed Anxiety and Depressive Disorder (aged 16+)

Age	Male	Female	Total
16 to 24	16	26	42
25 to 34	28	27	55
35 to 49	45	50	95
50 to 64	48	48	96
65 plus	11	31	42
Total	148	182	330
Percent	6.2%	7.0%	6.6%



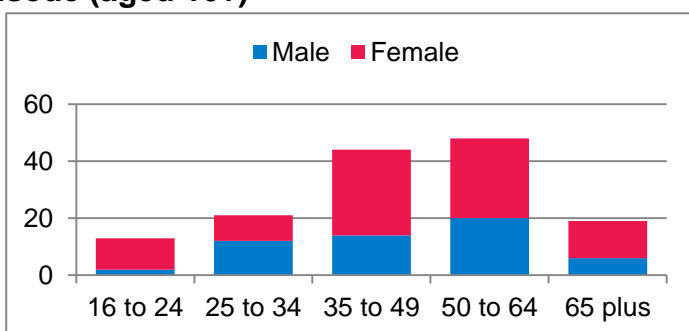
Estimated Prevalence of Generalised Anxiety Disorder (aged 16+)

Age	Male	Female	Total
16 to 24	10	25	35
25 to 34	18	20	38
35 to 49	28	43	71
50 to 64	30	46	76
65 plus	7	32	39
Total	93	166	259
Percent	3.9%	6.4%	5.2%



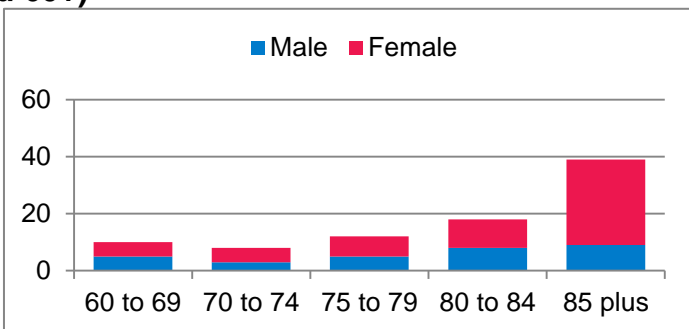
Estimated Prevalence of Depressive Episode (aged 16+)

Age	Male	Female	Total
16 to 24	2	11	13
25 to 34	12	9	21
35 to 49	14	30	44
50 to 64	20	28	48
65 plus	6	13	19
Total	54	91	145
Percent	2.3%	3.5%	2.9%



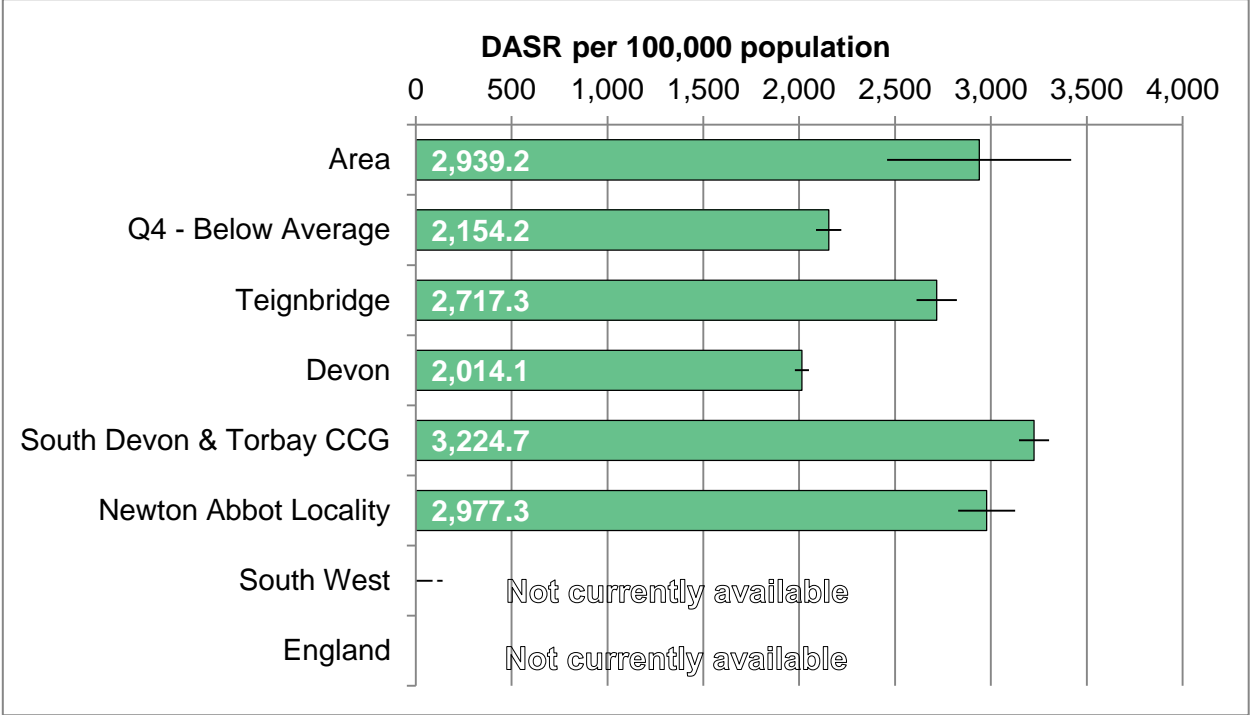
Estimated Prevalence of Dementia (aged 60+)

Age	Male	Female	Total
60 to 69	5	5	10
70 to 74	3	5	8
75 to 79	5	7	12
80 to 84	8	10	18
85 plus	9	30	39
Total	30	57	87
Percent	4.3%	6.6%	5.5%



ACCESS TO PSYCHOLOGICAL THERAPIES

Direct-age standardised rate of referrals to psychological therapies (IAPT)



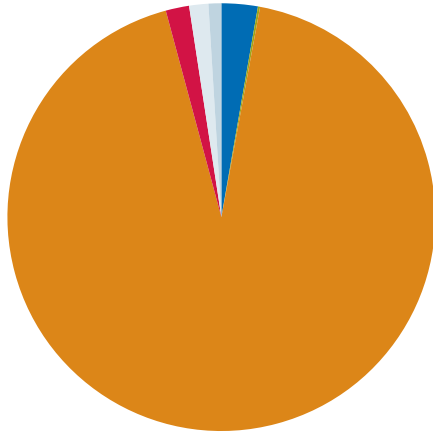
Trend information not currently available

Area	2015
Number per annum	144
Area rate	2939.2
Q4 - Below Average	2154.2
Teignbridge	2717.3
Devon	2014.1
South Devon & Torbay CCG	3224.7
Newton Abbot Locality	2977.3
South West	N/A
England	N/A

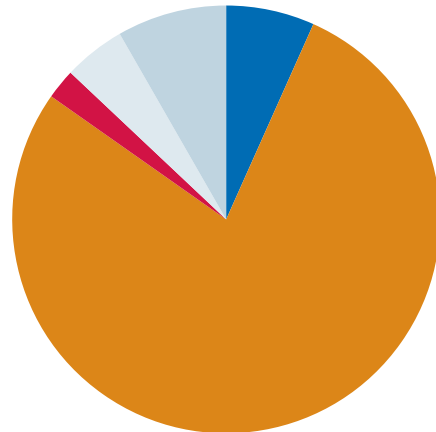
USE OF HEALTH SERVICES

Number and share of population using different health care providers

Non-Elective Admissions 2016



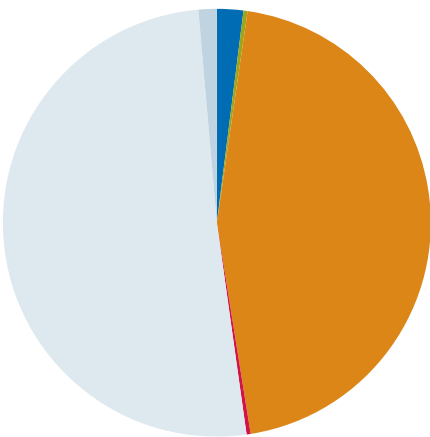
Elective Admissions 2016



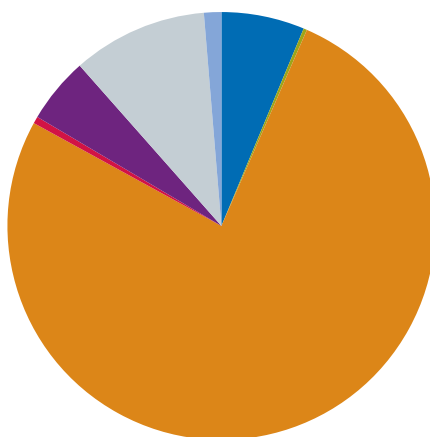
Location	No. P.A.
RD&E Exeter Hosp	17
Barnstaple Hosp	<5
Torbay Hosp	577
Plymouth Hosp	11
Community Hosp	9
Outside Devon	6
Total	621

Location	No. P.A.
RD&E Exeter Hosp	50
Barnstaple Hosp	<5
Torbay Hosp	584
Plymouth Hosp	17
Community Hosp	35
Outside Devon	62
Total	748

Urgent Care 2016



Births 2010 to 2015



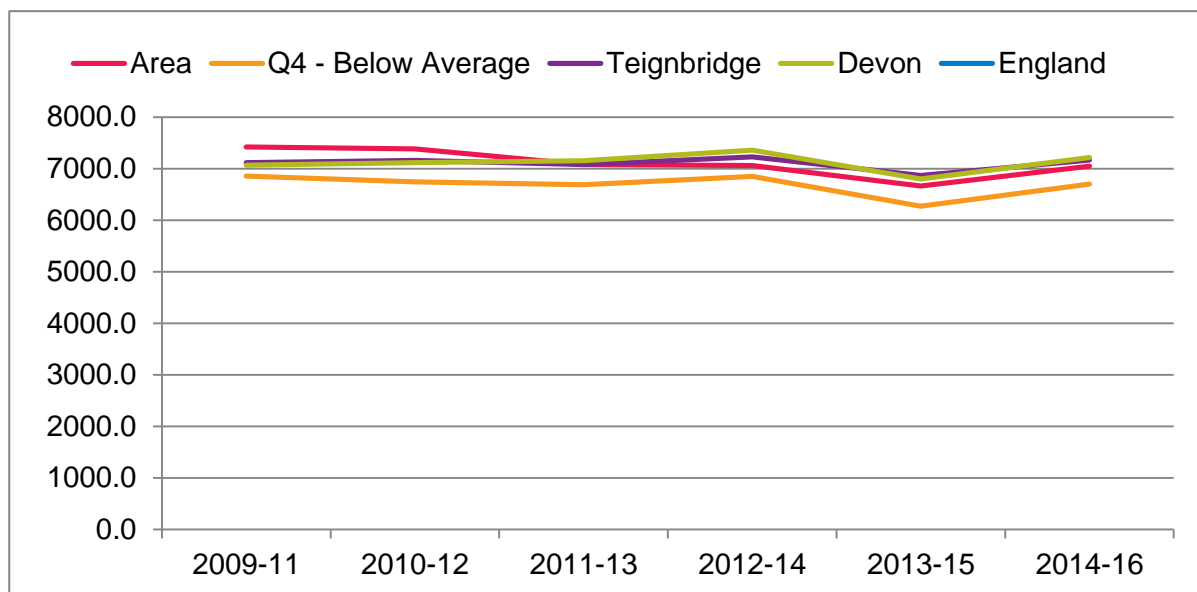
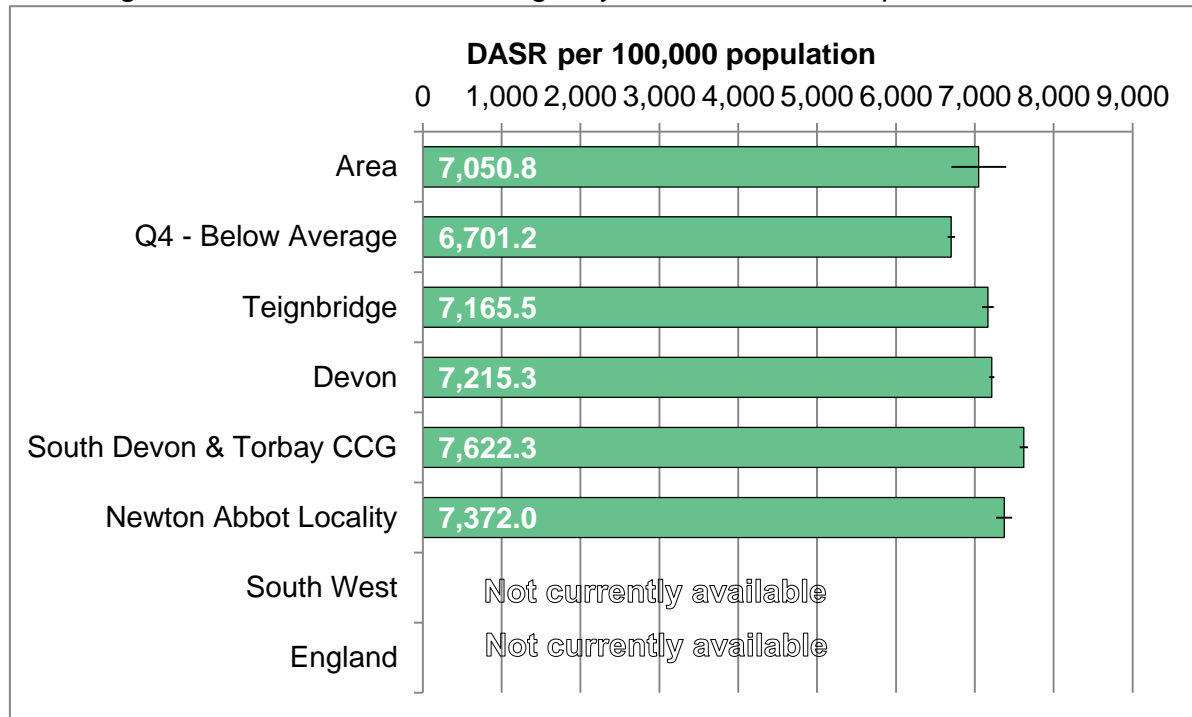
Location*	No. P.A.
Exeter A&E	13
Barnstaple A&E	<5
Torbay A&E	295
Plymouth A&E	<5
Local MIU/WIC	332
Outside Devon	9
Total	653

Location	2010-15
RD&E Exeter Hosp	24
Barnstaple Hosp	<5
Torbay Hosp	292
Plymouth Hosp	<5
Home	19
Community Hosp	39
Outside Devon	5
Total	382

* A&E is accident and emergency, MIU is minor injury unit, WIC is walk-in centre

EMERGENCY ADMISSIONS

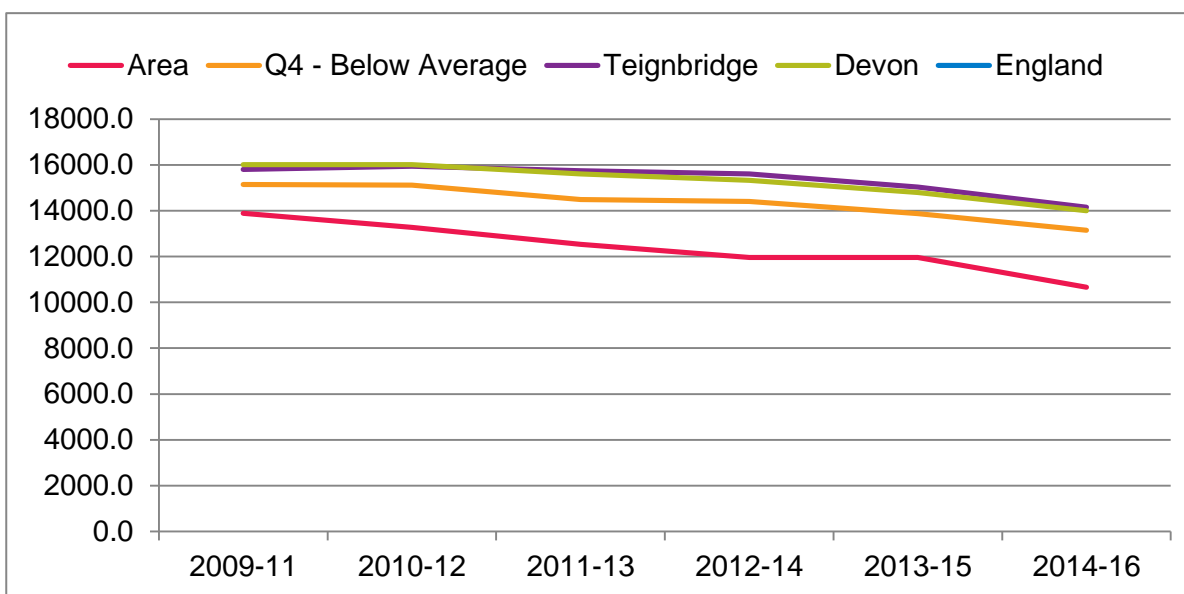
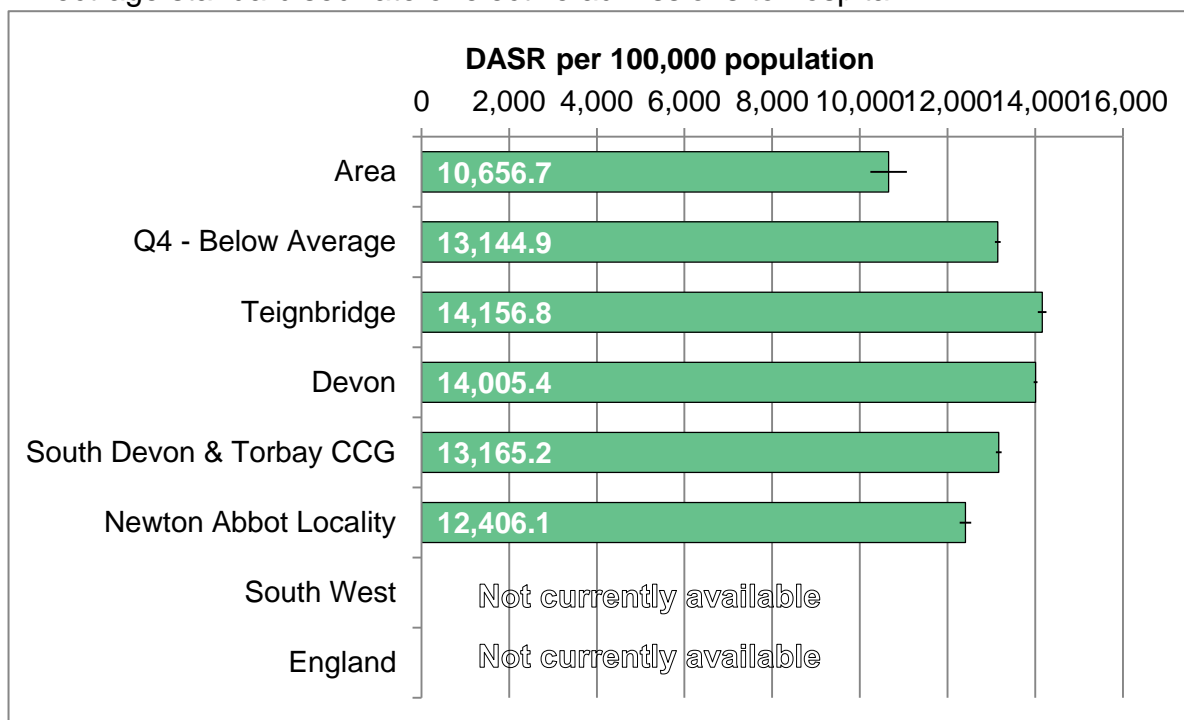
Direct-age standardised rate of emergency admissions to hospital.



Area	2009-11	2010-12	2011-13	2012-14	2013-15	2014-16
Average per annum	520	532	522	529	566	607
Area rate	7421.7	7385.5	7080.2	7058.6	6662.9	7050.8
Q4 - Below Average	6852.6	6743.2	6690.8	6851.2	6269.0	6701.2
Teignbridge	7117.7	7157.2	7080.5	7228.6	6867.6	7165.5
Devon	7066.4	7114.5	7151.7	7359.2	6800.7	7215.3
South Devon & Torbay	7642.9	7647.0	7592.5	7704.9	7334.4	7622.3
Newton Abbot Locality	7415.4	7448.1	7327.8	7424.0	7051.0	7372.0
South West	N/A	N/A	N/A	N/A	N/A	N/A
England	N/A	N/A	N/A	N/A	N/A	N/A

ELECTIVE ADMISSIONS

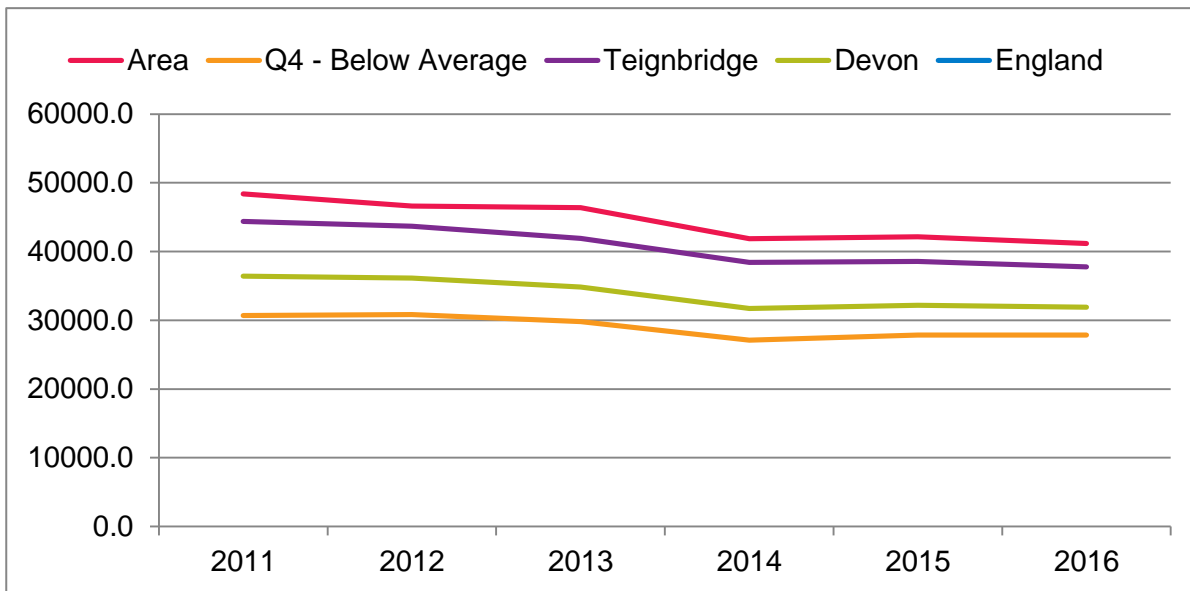
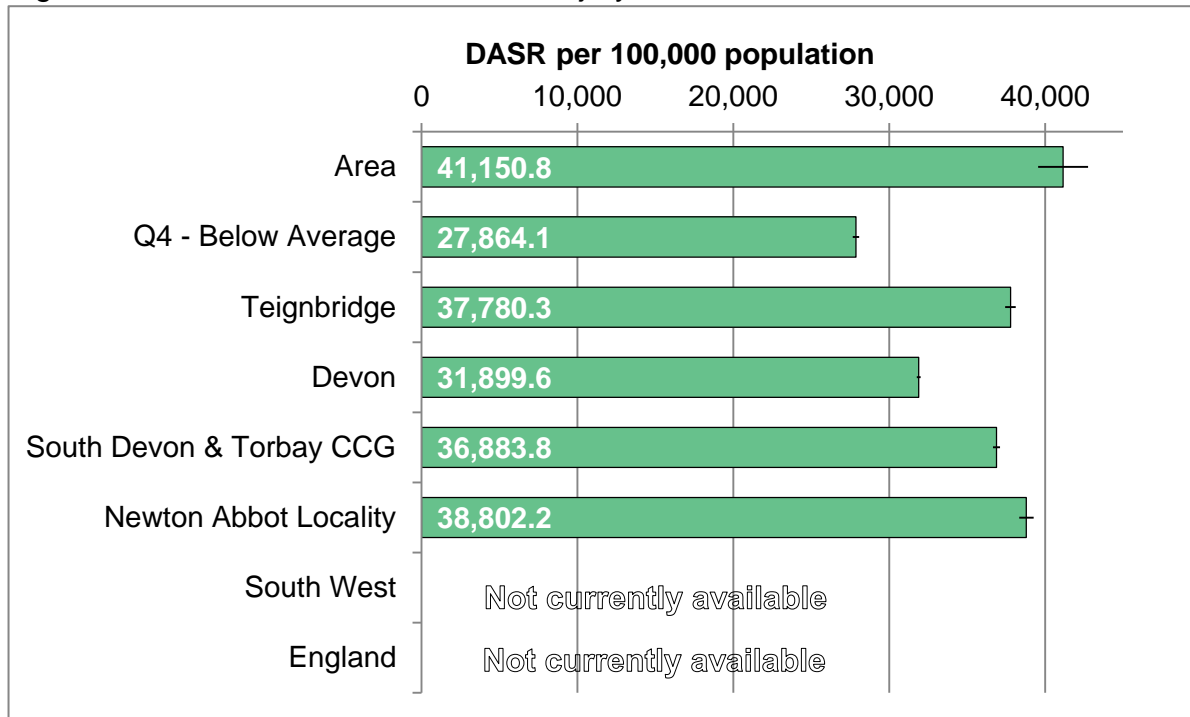
Direct-age standardised rate of elective admissions to hospital.



Area	2009-11	2010-12	2011-13	2012-14	2013-15	2014-16
Average per annum	890	901	893	2719	2715	2695
Area rate	13884.0	13274.7	12537.8	11961.3	11961.3	10656.7
Q4 - Below Average	15146.0	15113.8	14485.8	14403.4	13873.4	13144.9
Teignbridge	15805.2	15935.8	15746.4	15601.8	15039.0	14156.8
Devon	16010.9	16017.7	15609.2	15324.6	14791.8	14005.4
South Devon & Torbay	14340.5	14453.4	14525.4	14585.8	14030.6	13165.2
Newton Abbot Locality	14106.2	14085.2	13860.7	13981.8	13330.9	12406.1
South West	N/A	N/A	N/A	N/A	N/A	N/A
England	N/A	N/A	N/A	N/A	N/A	N/A

URGENT CARE ATTENDANCES

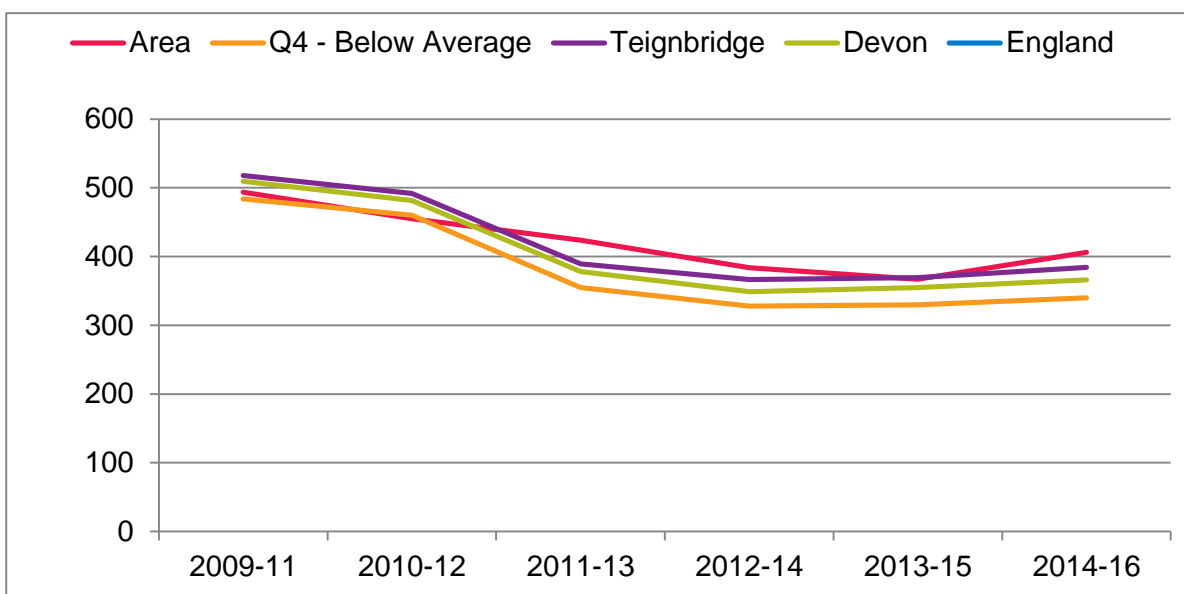
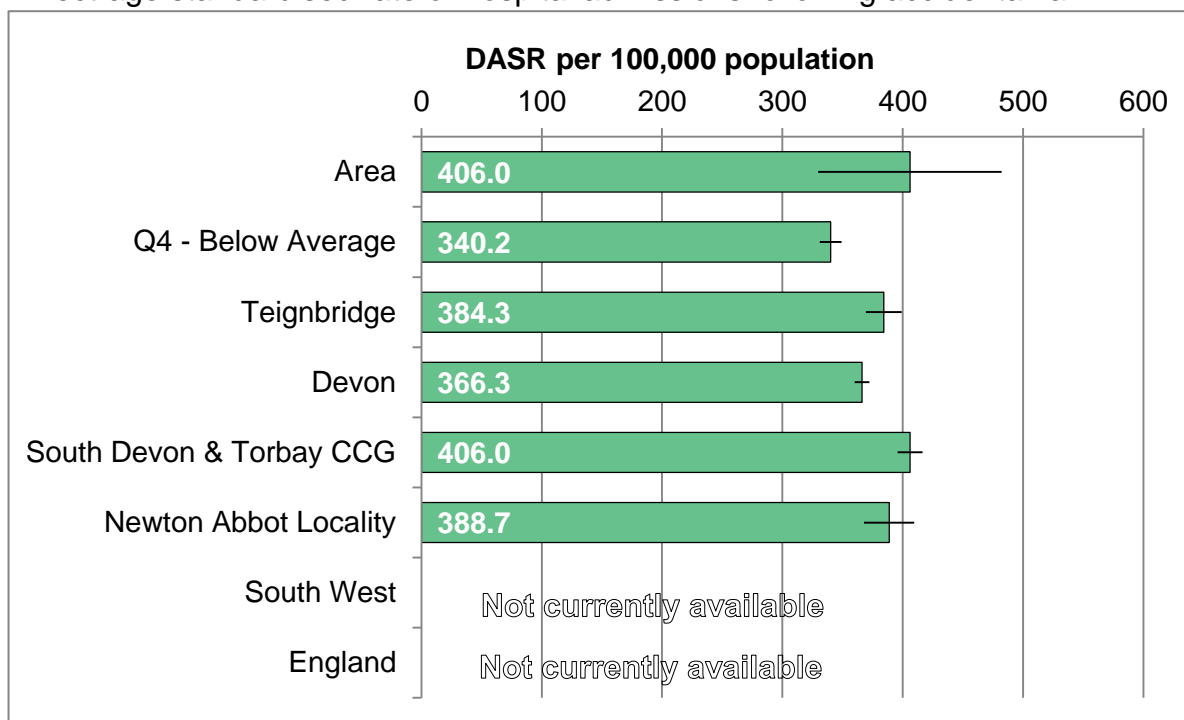
Age standardised rate of A&E / Minor Injury Unit and Walk-in centre attendances.



Area	2011	2012	2013	2014	2015	2016
Average per annum	2841	2857	2817	2755	2608	2673
Area rate	48366.5	46627.2	46389.3	41852.6	42154.8	41150.8
Q4 - Below Average	30710.2	30852.1	29811.3	27125.2	27831.3	27864.1
Teignbridge	44370.5	43675.4	41903.5	38440.5	38543.8	37780.3
Devon	36439.2	36160.0	34846.2	31719.6	32171.1	31899.6
South Devon & Torbay	42307.7	42011.1	40862.8	37443.4	37835.5	36883.8
Newton Abbot Locality	44698.1	44026.8	42543.6	38951.6	39224.6	38802.2
South West	N/A	N/A	N/A	N/A	N/A	N/A
England	N/A	N/A	N/A	N/A	N/A	N/A

ACCIDENTAL FALLS ADMISSIONS

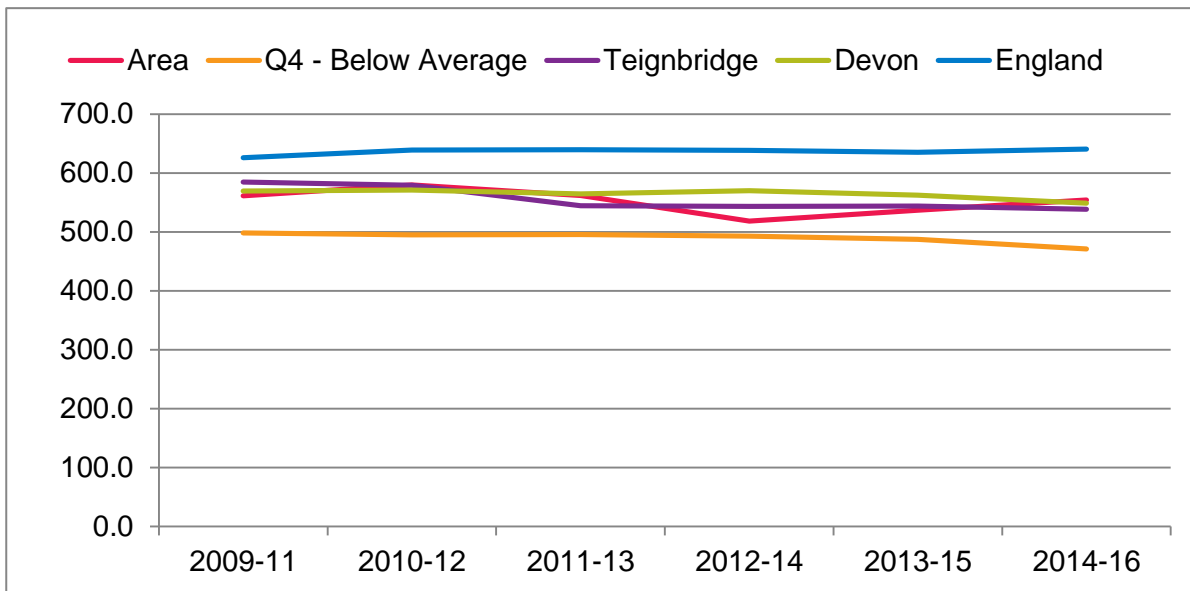
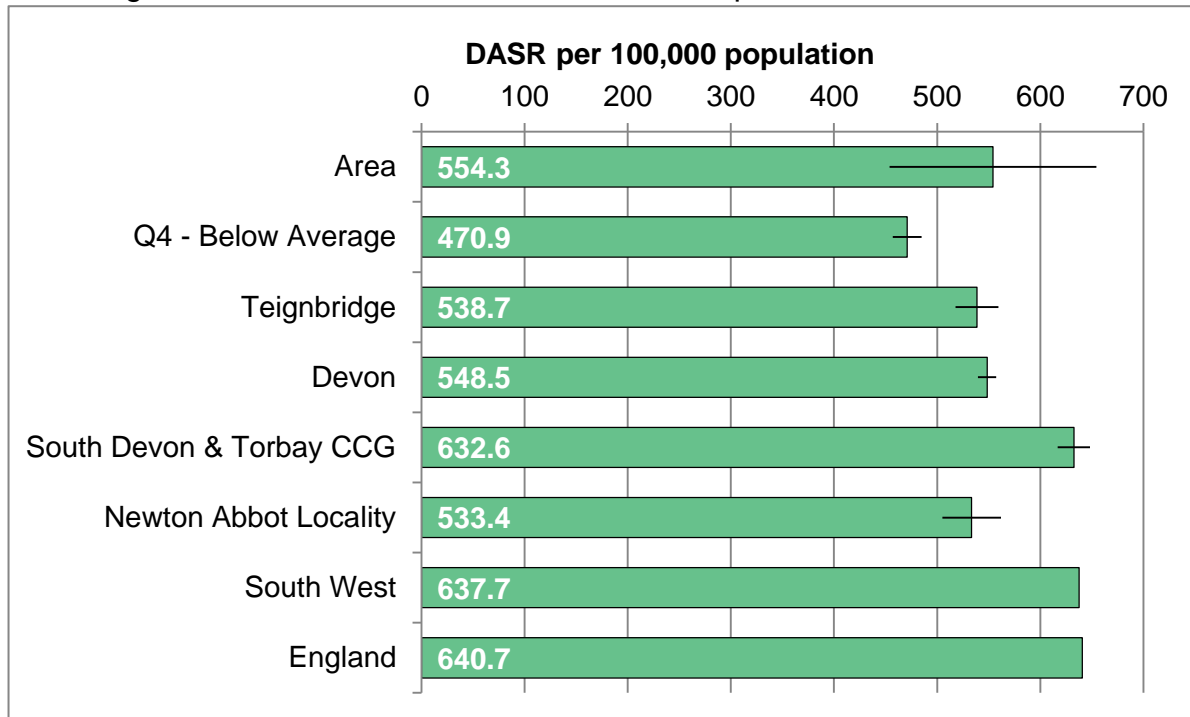
Direct-age standardised rate of hospital admissions following accidental fall.



Area	2009-11	2010-12	2011-13	2012-14	2013-15	2014-16
Average per annum	43	42	37	35	37	36
Area rate	493.7	455.2	423.7	383.8	366.9	406.0
Q4 - Below Average	484.0	460.2	354.8	328.0	329.8	340.2
Teignbridge	518.0	491.6	389.1	366.7	369.2	384.3
Devon	509.4	481.7	378.3	348.9	355.1	366.3
South Devon & Torbay	578.0	542.3	422.1	393.2	397.6	406.0
Newton Abbot Locality	526.9	495.6	396.6	372.4	370.3	388.7
South West	N/A	N/A	N/A	N/A	N/A	N/A
England	N/A	N/A	N/A	N/A	N/A	N/A

ALCOHOL-RELATED ADMISSIONS

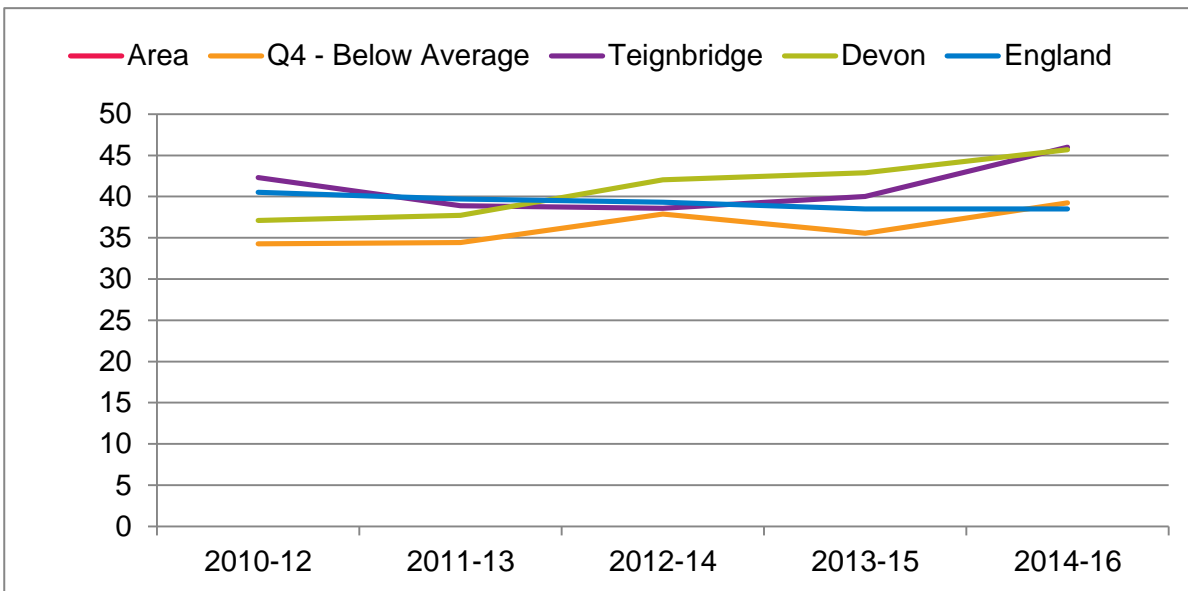
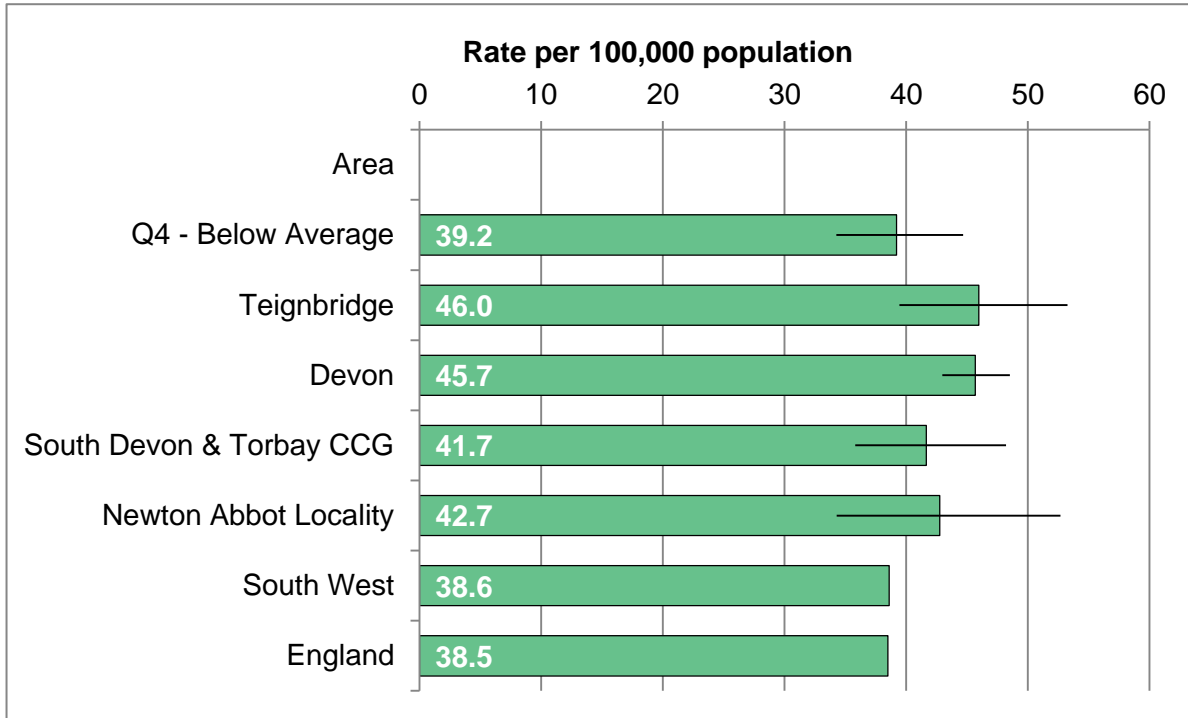
Direct-age standardised rate of alcohol-related hospital admissions.



Area	2009-11	2010-12	2011-13	2012-14	2013-15	2014-16
Average per annum	37	39	38	35	38	39
Area rate	561.4	580.0	561.6	518.6	536.9	554.3
Q4 - Below Average	498.4	495.2	495.4	492.8	487.3	470.9
Teignbridge	584.5	579.0	544.4	543.2	544.1	538.7
Devon	569.4	570.8	564.8	570.0	562.4	548.5
South Devon & Torbay	666.9	654.5	645.9	631.1	642.3	632.6
Newton Abbot Locality	583.6	562.1	518.3	515.1	518.2	533.4
South West	635.7	641.7	637.7	628.3	627.0	637.7
England	626.0	639.0	639.3	638.3	635.0	640.7

KILLED OR SERIOUSLY INJURED ON ROADS

Rate of persons killed or seriously injured on roads per 100,000 population.

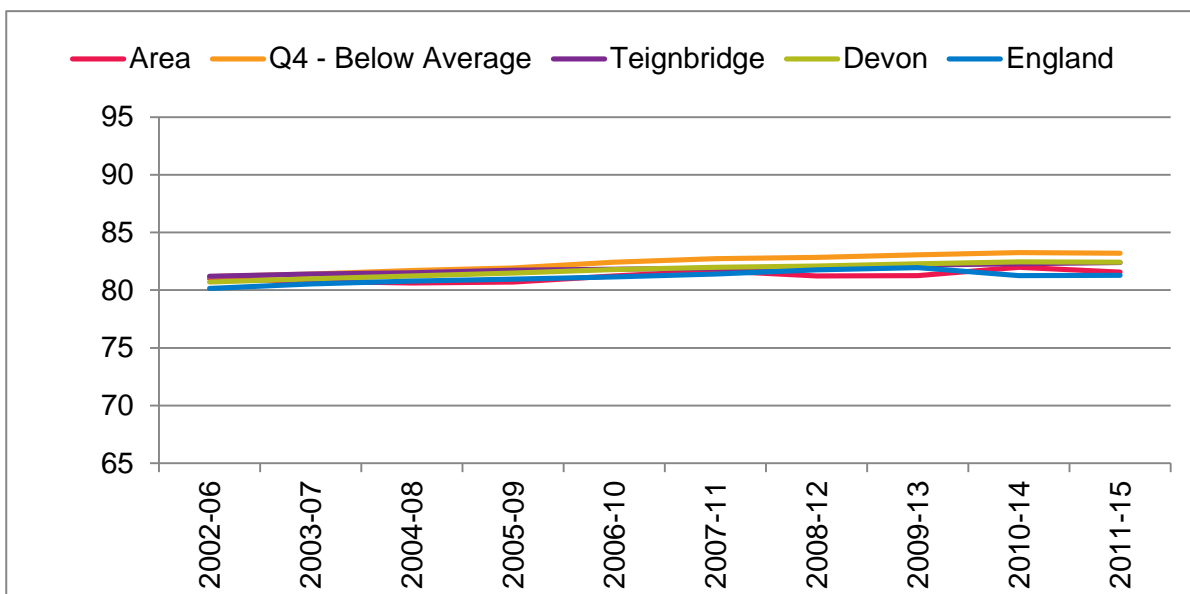
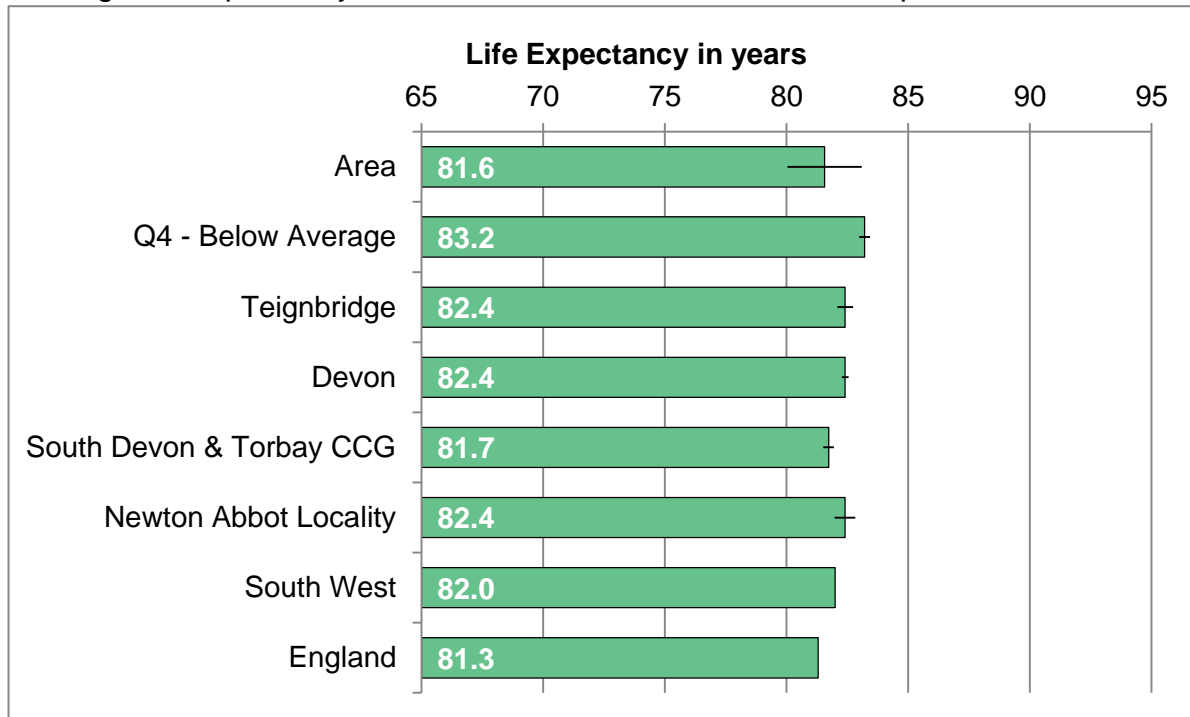


Area	2010-12	2011-13	2012-14	2013-15	2014-16
Average per annum	#	#	#	#	#
Area rate	#	#	#	#	#
Q4 - Below Average	34.3	34.4	37.9	35.5	39.2
Teignbridge	42.3	38.9	38.6	40.0	46.0
Devon	37.1	37.7	42.0	42.9	45.7
South Devon & Torbay	36.4	34.5	32.7	34.7	41.7
Newton Abbot Locality	44.5	41.8	38.0	38.2	42.7
South West	37.6	37.5	38.4	38.6	38.6
England	40.5	39.7	39.3	38.5	38.5

CCG figure is Devon County Council component of CCG only

LIFE EXPECTANCY AT BIRTH

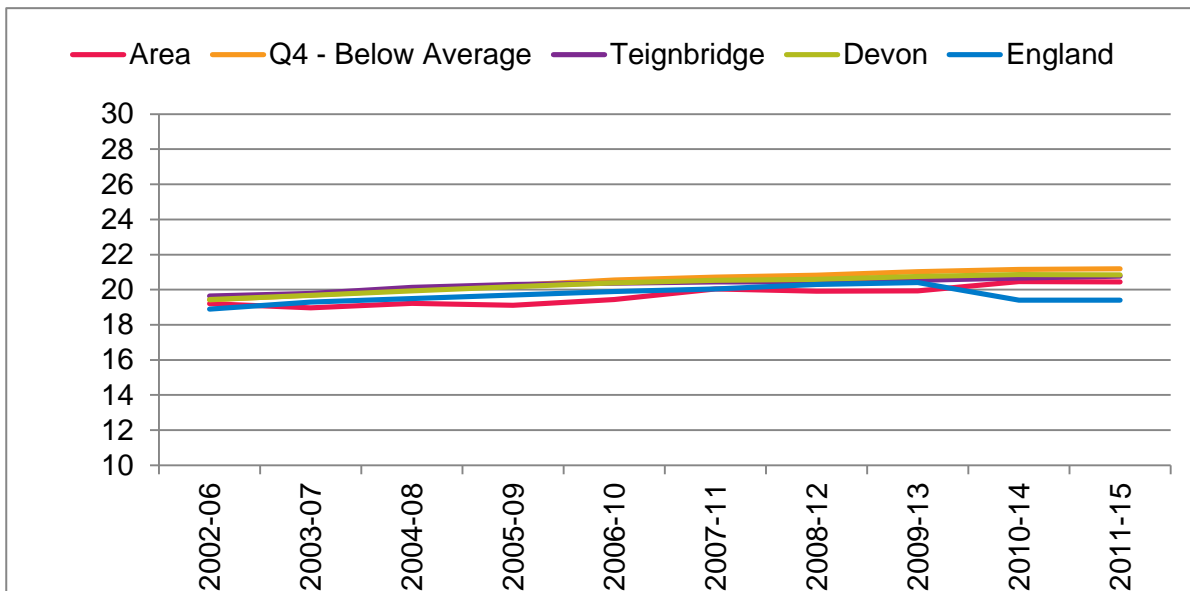
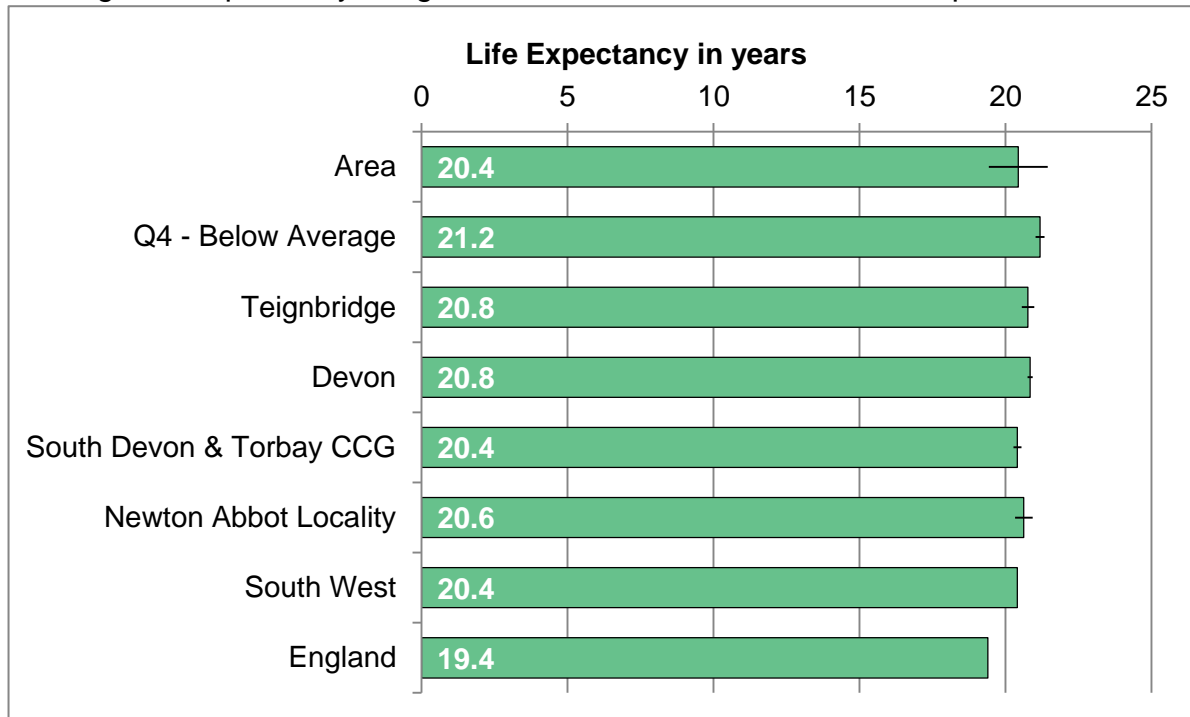
Average life expectancy at birth for residents, combined for all persons.



Area	2006-10	2007-11	2008-12	2009-13	2010-14	2011-15
Deaths per annum	55	53	56	56	53	53
Area rate	81.2	81.7	81.2	81.3	82.0	81.6
Q4 - Below Average	82.4	82.7	82.8	83.1	83.3	83.2
Teignbridge	81.8	81.9	81.9	82.2	82.3	82.4
Devon	81.8	82.0	82.1	82.3	82.5	82.4
South Devon & Torbay	80.9	81.0	81.2	81.4	81.6	81.7
Newton Abbot Locality	81.6	81.8	81.8	82.1	82.2	82.4
South West	80.2	80.5	80.9	81.1	82.0	82.0
England	81.2	81.4	81.8	82.0	81.3	81.3

LIFE EXPECTANCY AT AGE 65

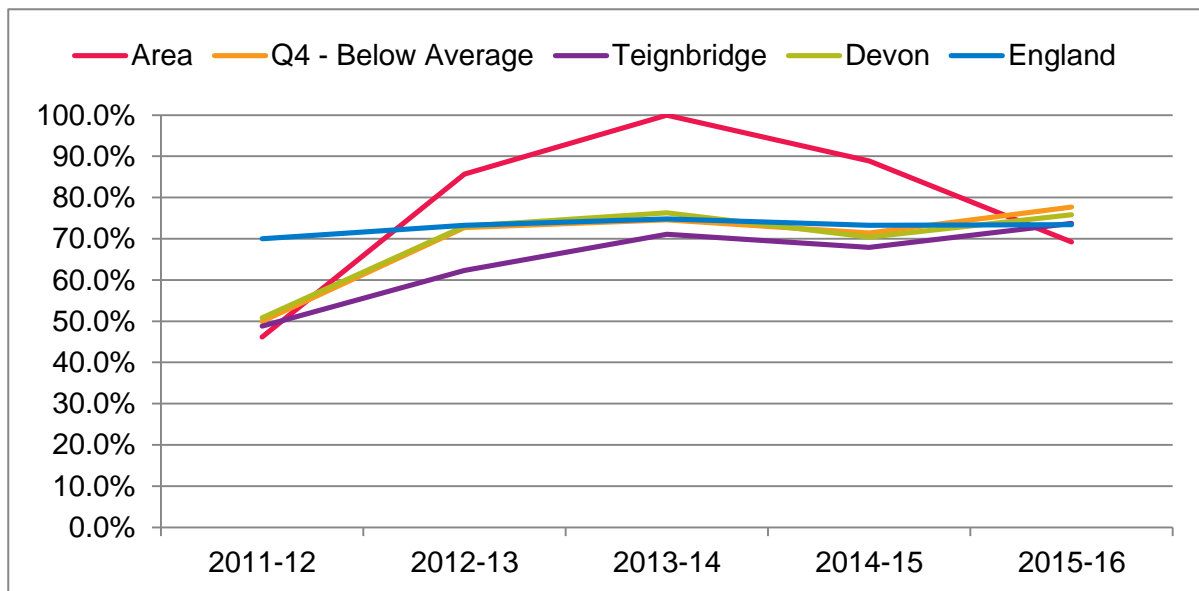
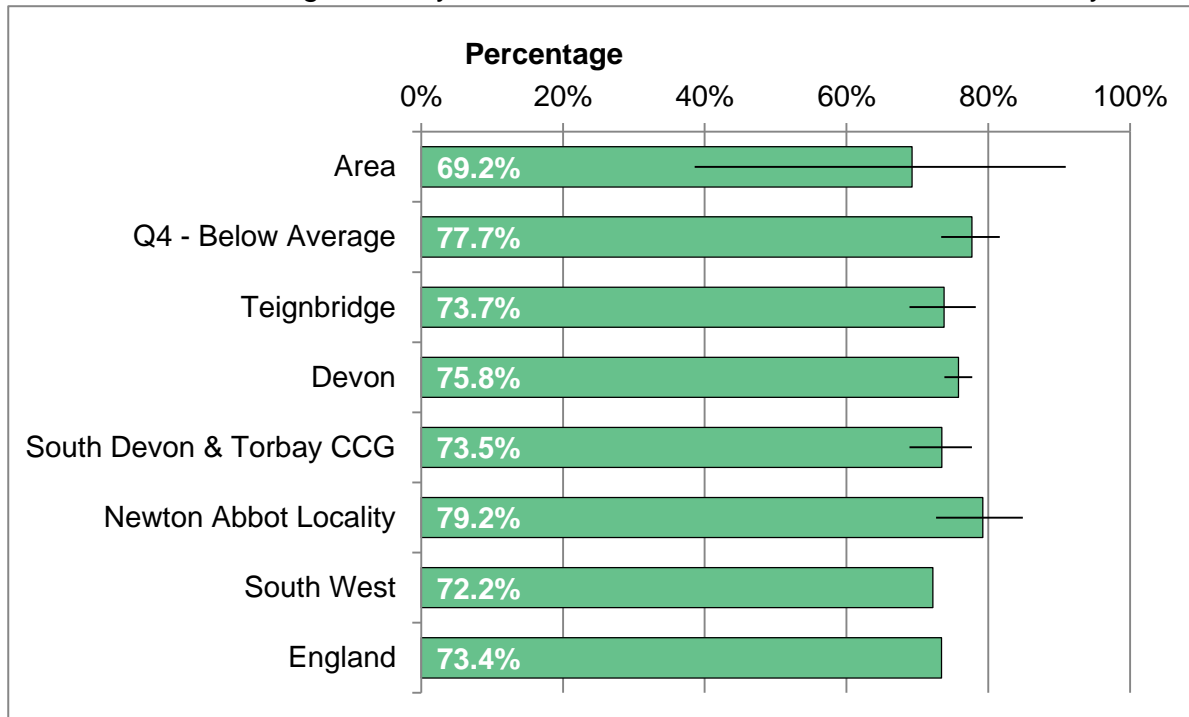
Average life expectancy at age 65 for residents. Combined for all persons.



Area	2006-10	2007-11	2008-12	2009-13	2010-14	2011-15
Deaths per annum	47	45	47	47	45	47
Area rate	19.4	20.0	19.9	19.9	20.5	20.4
Q4 - Below Average	20.6	20.7	20.8	21.0	21.2	21.2
Teignbridge	20.4	20.4	20.4	20.5	20.7	20.8
Devon	20.4	20.5	20.6	20.8	20.9	20.8
South Devon & Torbay	20.1	20.1	20.2	20.3	20.4	20.4
Newton Abbot Locality	20.1	20.3	20.3	20.4	20.6	20.6
South West	19.2	19.4	19.7	19.8	20.5	20.4
England	19.9	20.1	20.3	20.4	19.4	19.4

LEARNING DISABILITY ACCOMMODATION

Adults with a learning disability who live in their own home or with their family.

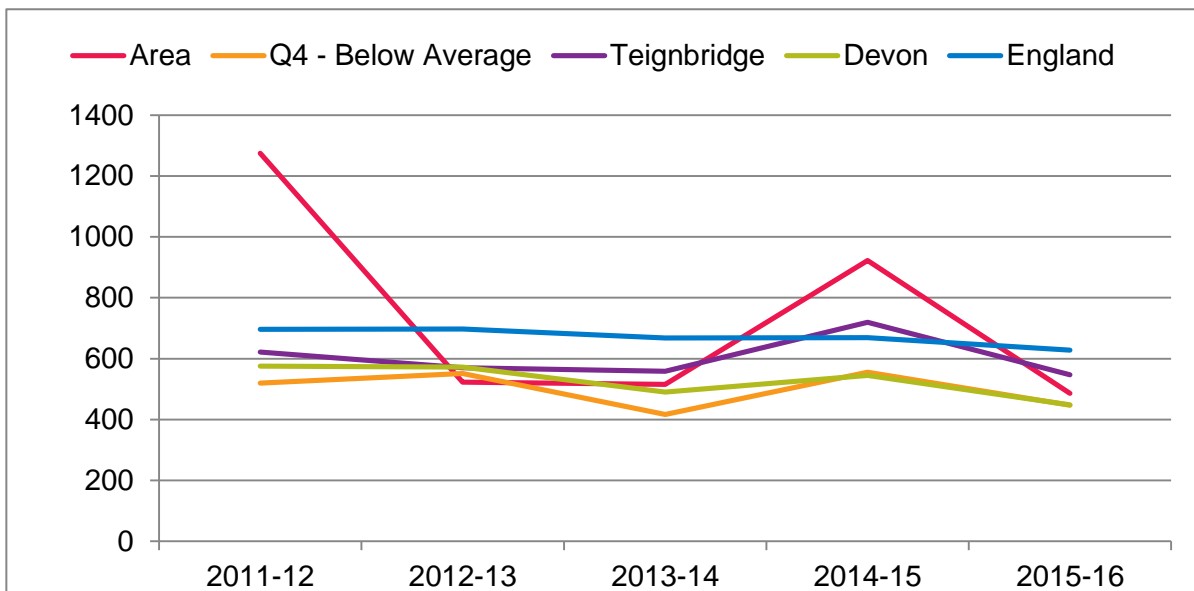
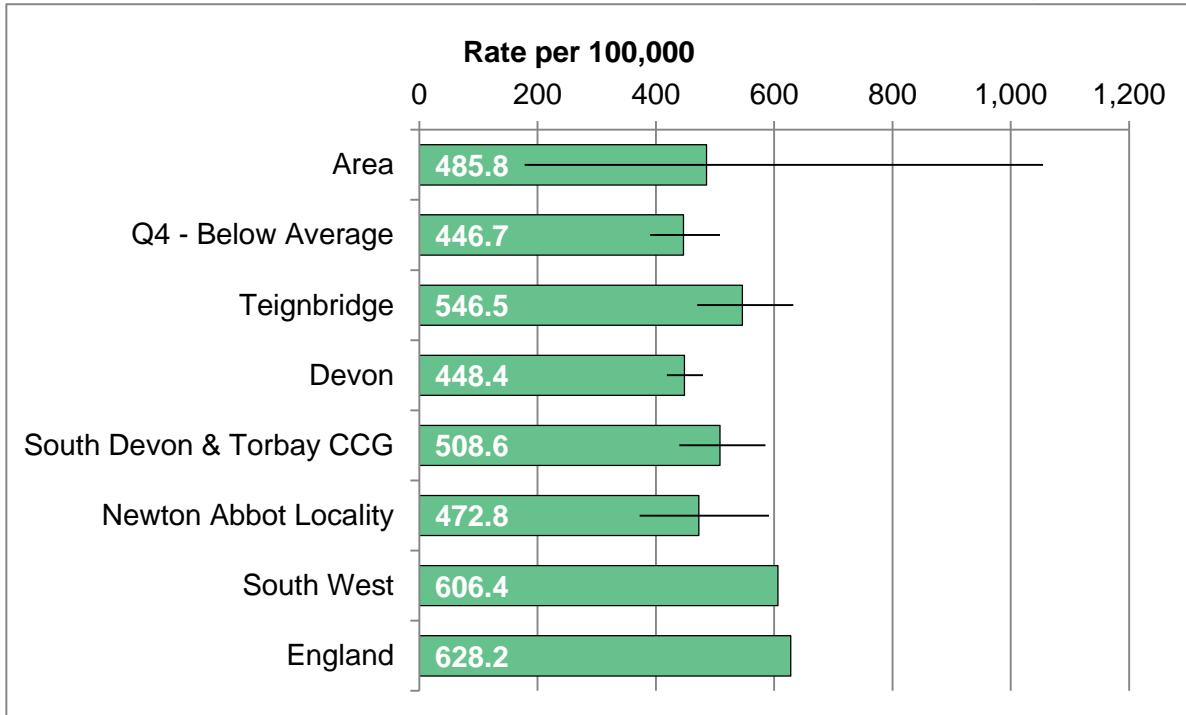


Area	2011-12	2012-13	2013-14	2014-15	2015-16
Number per annum	6	12	9	8	9
Area rate	46.2%	85.7%	100.0%	88.9%	69.2%
Q4 - Below Average	50.0%	72.7%	74.6%	71.4%	77.7%
Teignbridge	48.8%	62.3%	71.1%	67.9%	73.7%
Devon	50.8%	73.0%	76.3%	70.4%	75.8%
South Devon & Torbay	46.4%	62.4%	70.5%	68.8%	73.5%
Newton Abbot Locality	55.6%	70.3%	79.7%	79.7%	79.2%
South West	65.3%	66.5%	72.7%	69.5%	72.2%
England	70.0%	73.3%	74.8%	73.3%	73.4%

CCG figure is Devon County Council component of CCG only

PERMANENT ADMISSIONS TO CARE HOMES

Permanent admissions to care homes in area per 100,000 population aged 65 and over.

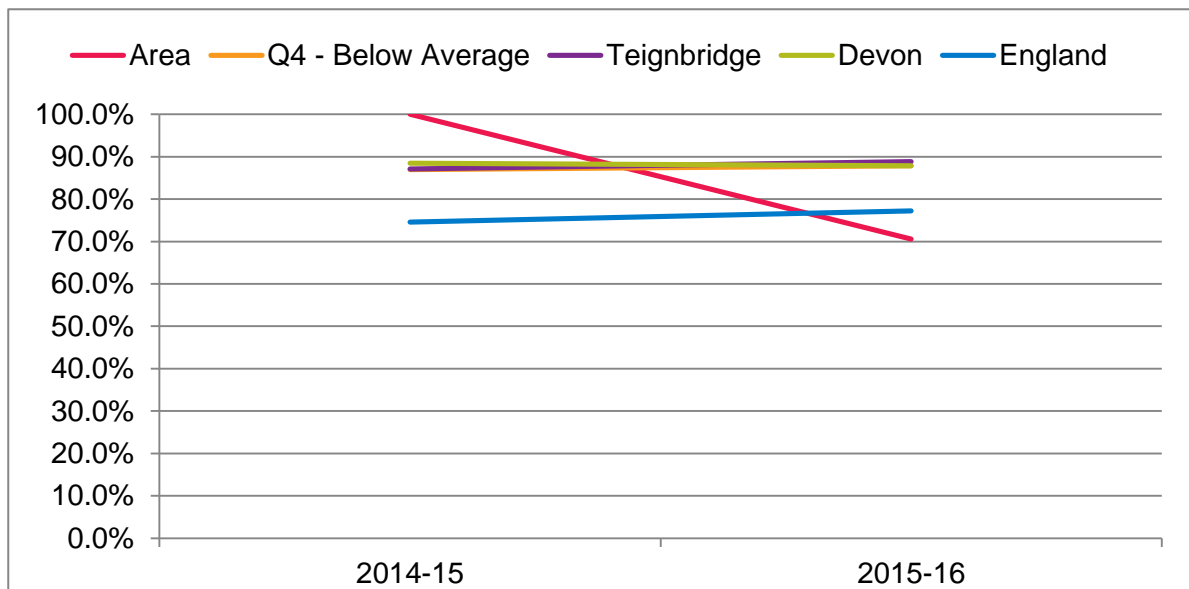
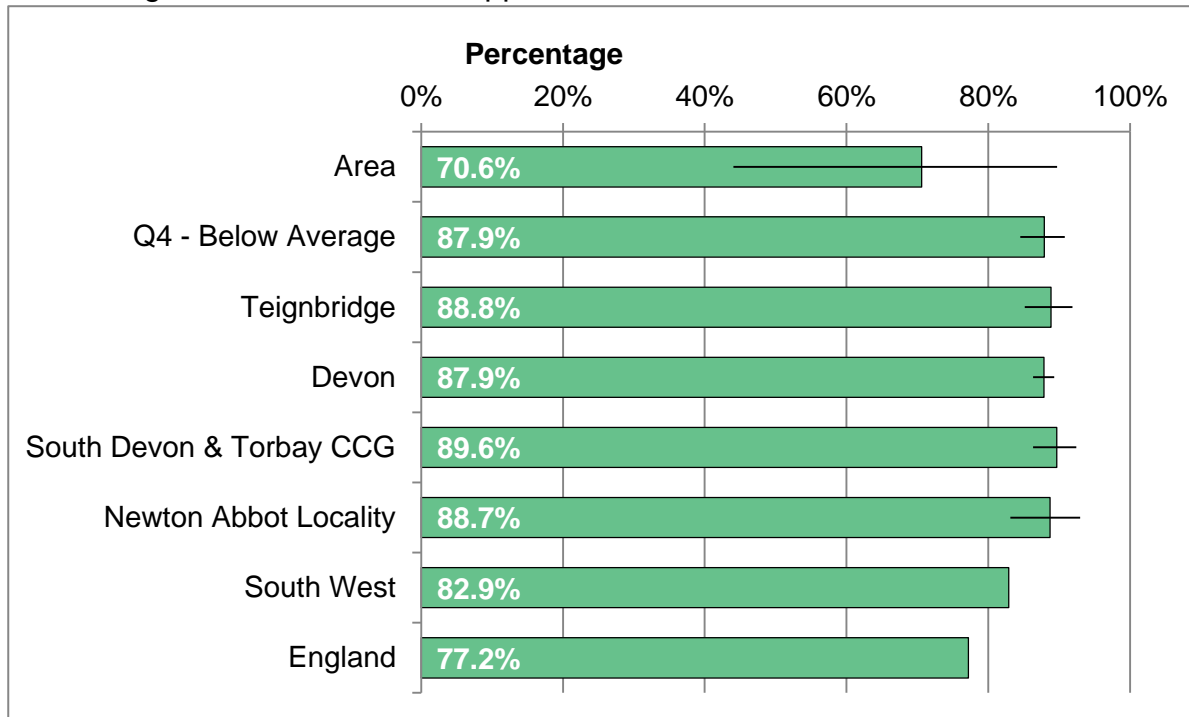


Area	2011-12	2012-13	2013-14	2014-15	2015-16
Number per annum	14	6	6	11	6
Area rate	1275.0	522.6	515.0	922.0	485.8
Q4 - Below Average	519.3	550.9	416.5	555.7	446.7
Teignbridge	621.8	569.8	558.7	719.7	546.5
Devon	575.8	571.7	490.6	545.3	448.4
South Devon & Torbay CCG	563.4	517.5	491.1	625.1	508.6
Newton Abbot Locality	604.7	581.1	518.4	717.2	472.8
South West	677.7	680.8	656.2	678.2	606.4
England	695.9	697.2	668.4	668.8	628.2

CCG figure is Devon County Council component of CCG only

OUTCOME OF SHORT-TERM SUPPORT

Percentage of short-term care support that results in no further need for services.



Area	2014-15	2015-16
Number per annum	20	12
Area rate	100.0%	70.6%
Q4 - Below Average	87.0%	87.9%
Teignbridge	87.1%	88.8%
Devon	88.5%	87.9%
South Devon & Torbay	87.1%	89.6%
Newton Abbot Locality	89.2%	88.7%
South West	76.0%	82.9%
England	74.6%	77.2%

CCG figure is Devon County Council component of CCG only

SOURCES AND DEFINITIONS

Page 3, Indicator Summary

This summary shows all the main measures within the JSNA profile, showing the value for the area, compared with the local authority district and Devon as a whole. A statistical significance column is also included which identifies if the area is significantly higher (orange shading), significantly lower (blue shading) or not significantly different (grey shading) than the Devon figure. Sources are described in individual indicator definitions below.

Page 4, 2011 Census Profile

This summary shows measures for the area from the 2011 Census compared with the local authority district, Devon, the South West and England. A statistical significance column is also included as per the indicator summary on page 3. The socio-economic status section shows the percentage of the working-age population in different occupational (occ) groups, The qualifications and students sections shows the percentage of the population with highest level of qualifications for adults, and the percentage of the total population who are full-time (FT) students. For highest level of qualification, level 1 is foundation level, level 2 is GCSEs at grades A* to C, level 3 is A Level, and level 4 is degree level or above. Household (HH) characteristics highlights features of the household and dwelling, including how many are headed by a lone parent, lack a car or van, along with aspects of occupancy and housing including overcrowding and central heating. Average household size is the number of people in the area divided by the number of households. Housing tenure shows the percentage of household spaces in different forms of ownership. Ethnicity shows the percentage of the total population in different ethnic groups. In the health section, general health is reported on a five point scale from very good to very bad, and this measure shows the percentage of people who rate their health as bad or very bad. The question on long-term illness and disability in the 2011 census asked if people's day-to-day activities were limited because of a health problem or disability which has lasted, or is expected to last at least 12 months, including problems relating to old age. These measures show the percentage limited and the percentage limited a lot both for the total population, and for those aged 16 to 64 only. Finally, caring responsibilities and the time spent on them are recorded, relating to both family members and acquaintances looked after because of long-term physical or mental ill-health/disability, or old age. These measures show the percentage of the total population providing care, and the percentage of the total population who provide care for 50 hours or more.

Source: www.ons.gov.uk/census/2011census

Page 5, Population

This indicator shows the number and percentage of the population by age group and sex. The population pyramid shows how the population structure of the area relates to the England profile. The trend chart highlights how the population by broad age group has changed over time. The population table shows how the population profile in the area compares to its hierarchy of areas described on page 2. Source is ONS Mid-Year Population Estimates.

Source: <https://www.ons.gov.uk/search?q=population>

SOURCES AND DEFINITIONS

Pages 6 to 10, Indices of Deprivation

The 2015 Indices of Deprivation rank areas known as Lower Super Output Areas across England from 1 (most deprived) to 32844 (least deprived) according to the levels of deprivation. The Index of Multiple Deprivation (IMD) is the overall index of deprivation, which produces a score known as the IMD score, and a national rank. Page 6 shows the current IMD score and the trend in the rank over time. The Indices of Deprivation are composed of a number of domains and sub-domains as shown on pages 7 and 8 which compare the rank of the area with the average rank within the district, and the average rank within Devon. The income deprivation domain (page 9) and the employment deprivation domain (page 10) show the percentage of the population on low incomes and involuntary exclusion from employment respectively. The source is the Department for Communities and Local Government.

Source: www.gov.uk/government/statistics/english-indices-of-deprivation-2015

Page 11, Birth Rate

The birth rate is the total number of live births expressed as a rate per 1,000 females aged between 15 and 44 in the area. The source are the annual births extract from the Health and Social Care Information Centre.

Source: www.hscic.gov.uk/popbirthdeath

Page 12, Early Help DAF Assessments

The Devon Assessment Framework (DAF) is a process for collecting family information and developing an in-depth plan for children with educational or disability related needs aged 0 to 24. This measure shows the number of assessments undertaken as a percentage of all persons aged 0 to 24 in the area. The source is Devon County Council.

Source: <https://new.devon.gov.uk/send/send-information/how-does-my-child-get-support/>

Page 13, Children In Need

A child in need is defined under the Children Act 1989 as a child who is unlikely to reach or maintain a satisfactory level of health or development, or their health or development will be significantly impaired without the provision of services, or the child is disabled. This measure is children in need as a percentage of all persons aged 0 to 24. Source is the Annual Children in Need Census.

Source: https://www.gov.uk/government/uploads/system/uploads/attachment_data/file/466133/CIN15-16_Guide_v1.1_web_version.pdf

Page 14, Safeguarding Enquiries (MASH)

The Devon Multi-Agency Safeguarding Hub (MASH) is the central team responsible for receiving all safeguarding and child protection enquiries in Devon and coordinating the local response to these across services including police, probation, fire, ambulance, health, education and social care. This measure shows the number of enquiries to the MASH as a rate per 1,000 people aged 0 to 17. Source is Devon Multi-Agency Safeguarding Hub.

Source: <https://new.devon.gov.uk/educationandfamilies/child-protection>

SOURCES AND DEFINITIONS

Page 15, English As An Additional Language

A learner of English as an additional language (EAL) is a pupil whose first language is other than English. First language is the language to which the child was initially exposed to during early development and continues to use this language in the home and community. This measure is the percentage of pupils (primary and secondary) for whom English is an additional language.

Source:

<https://new.devon.gov.uk/supportforschools/administration/school-census>

Page 16, Special Educational Needs

The term 'special educational needs' refers to children who have learning difficulties or disabilities that make it harder for them to learn than most children of the same age. Many children will have special needs of some kind at some time during their education. This measure shows the number of children in any special educational needs category as a percentage of all pupils.

Source:

<https://new.devon.gov.uk/supportforschools/administration/school-census>

Page 17, Pupils In Well Rated Schools

Ofsted inspect and regulate educational services. This involves regular inspections of schools which are classed as four grade scale encompassing excellent, good, requires improvement and inadequate. This measure shows the percentage of primary and secondary school pupils in an area who attend a school rated as good or outstanding.

Source:

<https://new.devon.gov.uk/supportforschools/administration/school-census>

Page 18, GCSE Attainment: Five Or More A*-C including English & Maths

Number of pupils at end of Key Stage 4 in schools maintained by the local education authority (includes special schools and pupil referral units) achieving five or more GCSEs at grades A* to C or equivalent, including English and maths GCSE as a percentage of all pupils at end of Key Stage 4.

Source: <https://www.gov.uk/government/collections/statistics-gcses-key-stage-4>

Page 19, Not In Education, Employment Or Training

A 16 to 18 year old is defined as being in education or training if he or she is in full-time education, work based learning (WBL), employer funded training, or other education and training. A 16 to 18 year old is defined as being in employment if he or she is an employee, self-employed, on a WBL programme or an unpaid family worker. Source is the Department for Education.

Source: <https://www.gov.uk/government/collections/statistics-neet>

Pages 20 to 25, Working Age Benefit Claimants

Based on the number of people claiming Department of Work and Pensions (DWP) benefits as a percentage of the total working-age (16 to 64) population. Measures include rates for all benefits (page 20), persons aged 16 to 24 only (page 21), Employment Support Allowance or Incapacity Benefit which relates to poor health (page 22), the carers client group (page 23), the disabled client group (page 24), and Job Seekers Allowance claimants (page 25).

Source: <http://tabulation-tool.dwp.gov.uk/NESS/page1.htm>

SOURCES AND DEFINITIONS

Page 26, Fuel Poverty

The percentage of households that experience fuel poverty based on the "Low income, high cost" methodology, where required fuel costs are above the national average, and where spending that amount would be left with a residual income below the official fuel poverty line. The key elements in determining fuel poverty are income, fuel prices and fuel consumption.

Source: <https://www.gov.uk/government/collections/fuel-poverty-sub-regional-statistics>

Page 27, Health-Related Behaviour Estimates

These local level estimates were derived by applying rates on the levels of health-related behaviours and risk factors from national surveys to local adult populations broken down by age, sex and deprivation. The source of the rates for current smoking, increased or higher risk drinking (21+ units a week for males, 14+ units a week for females), physical inactivity (less than 30 minutes of moderate physical activity per week) and obesity (BMI 30+) was the Health Survey for England.

Sources: <http://www.hscic.gov.uk/healthsurveyengland>

Page 28, Mental Ill Health Estimates

These local level estimates were derived by applying rates mental health problems from national surveys to local adult populations broken down by age, sex and deprivation. The source of the rates for the modelled self-reported wellbeing estimates is the ONS Annual Population Survey 2011-12. The source of the estimated prevalence figures for mixed anxiety and depression, anxiety and depression is the Adult Psychiatric Morbidity Survey 2014, and the source of the estimated dementia prevalence is the Dementia UK update from 2014.

Sources: <http://apps.opendatacommunities.org/showcase/wellbeing>
<http://www.hscic.gov.uk/pubs/psychiatricmorbidity07>
<https://www.alzheimers.org.uk/dementiauk>

Page 29, Access to Psychological Therapies

Improving Access to Psychological Therapies (IAPT) is an NHS programme rolling out services across England offering interventions approved by the National Institute of Health and Clinical Excellence (NICE) for treating people with depression and anxiety disorders. This measure is an age standardised rate per 100,000 population age 16 and over of referrals to the service.

Source: <http://www.iapt.nhs.uk/>

Page 30, Use Of Health Services

The availability and use of health services varies considerably by area. This set of charts and tables show the number and percentage of health care admissions and attendances for the area by service used. The services are the four hospitals in Devon, community hospitals and local minor injury units and walk-in centres, providers outside Devon, and in the case of births, home births. The activity types are non-elective or unplanned admissions, elective or planned admissions, urgent care activity (A&E, walk-in centres and minor injuries unit), and births. Sources is the Secondary Uses Service Commissioning dataset.

SOURCES AND DEFINITIONS

Pages 31 to 35, Rates of Admission and Attendance at Hospitals

Direct age standardised rate of admission or attendance to hospital per 100,000 population. The categories covered are emergency admissions (unplanned admissions to a hospital bed excluding transfers), elective or planned admissions, urgent care activity (A&E, walk-in centres and minor injury unit), accidental falls (admissions with accidental fall ICD10 W0 or W1 in any diagnosis field), and alcohol-related admissions (admissions to hospitals with alcohol-specific cause, or alcohol-related cause using 2014 definitions).

Source: <http://www.hscic.gov.uk/sus>
<http://www.lape.org.uk/downloads/AlcoholAttributableFractions.pdf>

Page 36, Killed Or Seriously Injured On Roads

The vast majority of road traffic collisions are preventable and can be avoided through improved education, awareness, road infrastructure and vehicle safety. This measure provided the rate of people killed or seriously injured on the roads per 100,000 resident population.

Source: <https://www.gov.uk/government/collections/road-accidents-and-safety-statistics>

Pages 37 and 38, Life Expectancy

Life expectancy is the average number of years a person would expect to live based on contemporary mortality rates. For a particular area and time period, it is an estimate of the average number of years a newborn baby would survive if he or she experienced the age-specific mortality rates for that area and time period throughout his or her life.

Page 39, Learning Disability Accommodation

The proportion of all adults with a learning disability known to the council who are recorded as living in their own home or with their family. The definition of individuals 'known to the council' is currently restricted to those adults with a learning disability (with a primary client group of LD) who have been or should have been assessed or reviewed during the year.

Source: <http://ascof.hscic.gov.uk/>

Page 40, Permanent Admissions To Care Homes

Number of permanent admissions to residential and nursing care homes in the area per 100,000 population aged 65 and over. People counted as a permanent admission include residents where the local authority makes any contribution to the costs of care, and registered care homes for nursing care.

Source: <http://ascof.hscic.gov.uk/>

Page 41, Outcome Of Short-Term Support

The aim of short-term services is to re-able people and promote their independence. This measure covers the proportion of new adult social care service users receiving a short-term servicing during the year for whom the outcome of the service was either no ongoing support or support at a lower level. The source is the Adult Social Care Outcomes Framework.

Source: <http://ascof.hscic.gov.uk/>

SOURCES AND DEFINITIONS

GLOSSARY OF TERMS

Crude Rate

A crude rate is the number of cases in an area per head of population.

Direct Age Standardised Rate (DASR)

An age-adjusted rate which shows the rate that would have occurred if the observed age-specific rates had occurred in a standard population.

Confidence Interval

A confidence interval is a statistical range which indicates the level of uncertainty around a particular figure, as seen in the whisker lines on charts.

Statistical Significance

The likelihood that a result or relationship is caused by something other than random chance.

Life Expectancy

The average period that a person may expect to live. This is represented as a figure 'at birth', and as figures for life expectancy from a defined age.

GEOGRAPHIC AREAS

This section describes the geographic areas available within the JSNA profiles

Lower Super Output Areas (LSOAs) are areas defined by the Office for National Statistics for the release of small area data. There are 457 in Devon.

Middle Super Output Areas (MSOAs) are groupings of LSOAs agreed by the local authority and the Office for National Statistics. There are 107 in Devon.

Wards are areas covered by Councillors within Devon's eight local authority districts. There are 202 in Devon.

Electoral Divisions are areas covered by Devon County Council Councillors. There are 62 in Devon.

Devon Towns are locally defined areas for the main market and coastal towns in Devon and the rural areas surrounding them. There are 29 in Devon.

Districts are lower tier local authority districts, responsible for housing, environmental health, waste collection, council tax collection, local planning and licensing. There are eight in Devon.

Clinical Commissioning Group Sub-Localities are local groupings of GP practices and NHS teams which coordinate care. There are nine in Devon.