

PUBLIC HEALTH DEVON OUTCOMES REPORT

Domain 1. Improving the Wider Determinants of Health

Indicator 1.01 Children in Poverty

Period: 2014

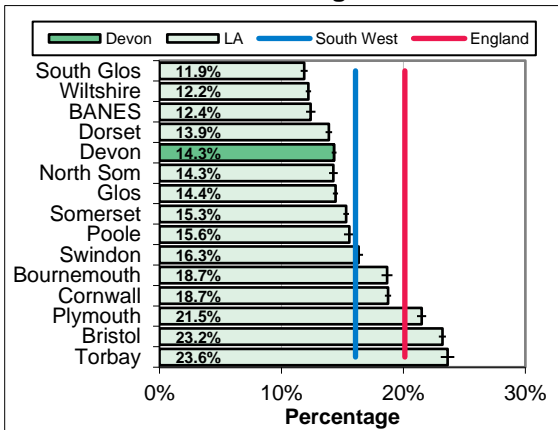
RAG Rating

	Green
A	Amber
	Red

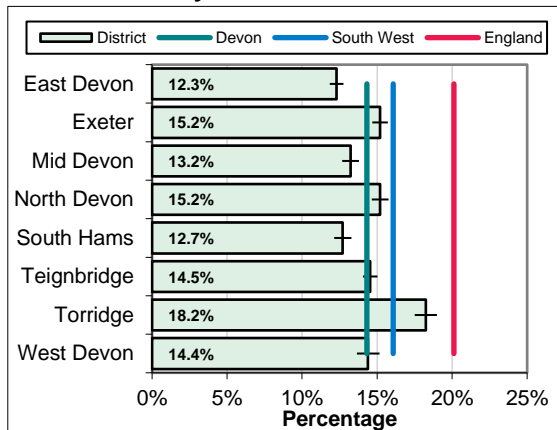
Overview
17,475 children (14.3%) in Devon live in households dependent on benefits or tax credits, compared with 16.1% in the South West, 15.2% for the local authority comparator group and 20.1% nationally. Child poverty rates increased between 2013 and 2014. Rates at a district level range from 12.3% in East Devon to 18.2% in Torridge.

Equalities
Considerable variation exists across Devon communities. Rates of child poverty are higher in younger families due to higher benefit claimant rates and lower incomes in persons in their 20s and 30s. Single parent households, particularly where headed by a female, are also more likely to experience economic poverty, as are children of disabled parents. There are no significant variations by ethnic group in Devon.

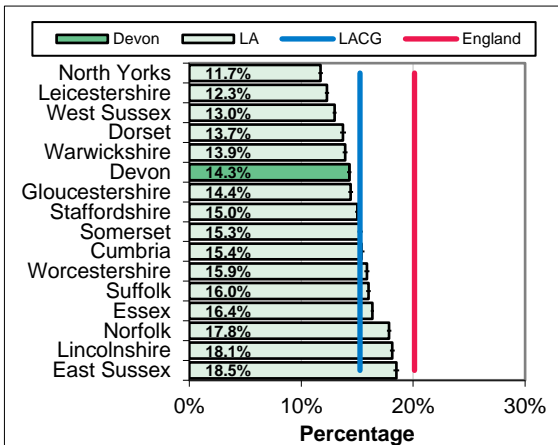
South West Benchmarking



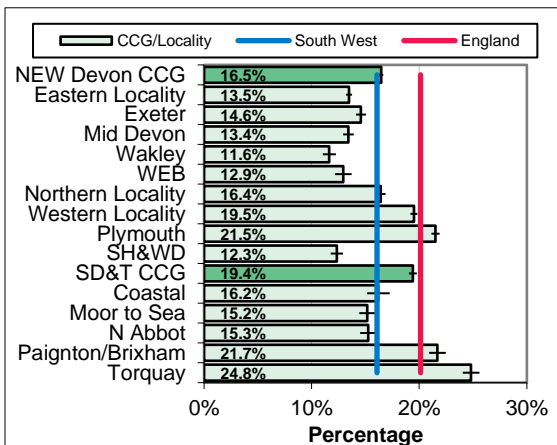
Local Authority District



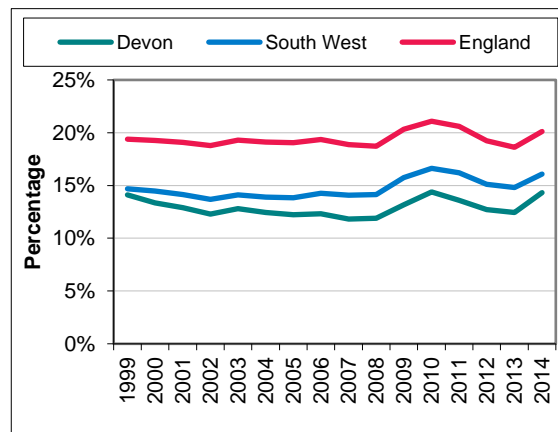
Local Authority Comparator Group



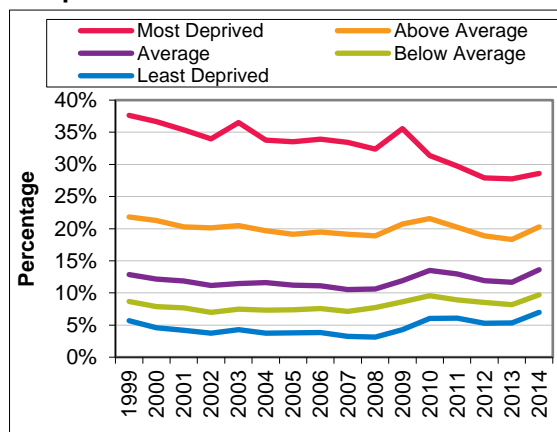
CCG and Locality Comparison



Trend



Inequalities



PUBLIC HEALTH DEVON OUTCOMES REPORT INDICATOR SPECIFICATION

Domain 1. Improving the Wider Determinants of Health

Indicator 1.01 Children in Poverty

Period: 2014

Description	Percentage of children (aged 0 to 15) living in households dependent on benefits or tax credits.
Source	HM Revenue and Customs (Personal Tax Credits: Related Statistics - Child Poverty Statistics)
Update Frequency	Annually, around 20 months in arrears (2015 due Autumn 2017)
Outcomes Framework	Public Health Outcomes Framework Indicator 2.01
Detailed Specification	Children living in families in receipt of Child Tax Credit (CTC) whose reported income is less than 60 per cent of the median income or are in receipt of income support (IS) or Income-Based Jobseeker's Allowance (JSA), as a proportion of the total number of children in the area.
Chart Notes South West	Compares Upper Tier / Unitary Local Authorities in the South West Region. Error bar is 95% confidence interval.
Chart Notes Local Authority	Compares Local Authority Districts in the Devon County Council area. Error bar is 95% confidence interval.
Chart Notes Comparator	Compares Devon to similar upper tier / unitary local authorities using the 15 closest comparator councils from the Institute of Public Finance (IPF) statistical neighbours. Error bar is 95% confidence interval.
Chart Notes CCG/Localities	Displays rates for the two Clinical Commissioning Groups in the wider Devon area, their localities, and their sub-localities. This is based on the geographic areas defined at Lower Super Output Area level www.devonhealthandwellbeing.org.uk/library/maps . Error bar is 95% confidence
Chart Notes Trend	Compares Devon rate with South West region and England over time. Trajectory is a 'no change' projection from the 2009 baseline.
Chart Notes Inequalities	Compares areas within Devon based on area deprivation. National deprivation quintiles from the 2010 Indices of Deprivation (Index of Multiple Deprivation) used.