

DEVON HEALTH AND WELLBEING OUTCOMES REPORT

Priority 3: Good Health and Wellbeing in Older Age

Indicator: Deaths in usual place of residence

Period: 2016

RAG Rating

G Green

Amber

Red

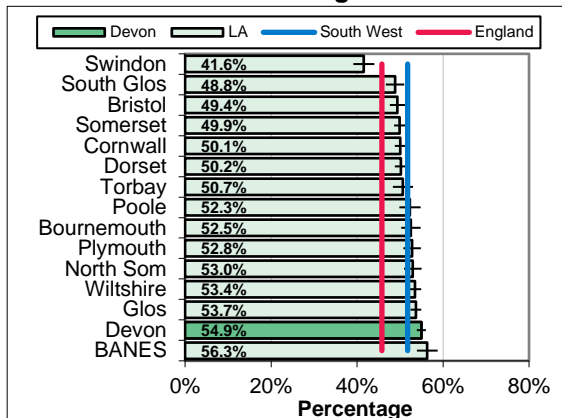
Overview

54.9% of Devon residents who died during 2016 did so in their usual place of residence (home, care home or religious establishment). This was significantly above the South West (51.8%), local authority comparator group (48.9%) and England (45.8%) rates. Within Devon the highest rates were in West Devon (61.5%), and the lowest were in Exeter (50.2%). Rates have increased over time, rising from 52.3% in 2015 to 54.9% in 2016.

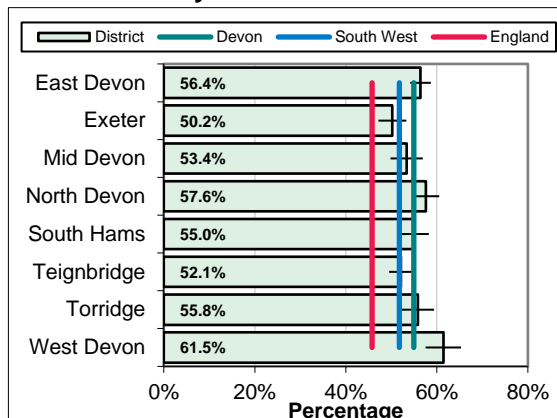
Equalities

Rates of death in usual place of residence tend to be higher in less deprived areas of Devon (48.5%). Rates increase with age and higher rates are seen in females. Rates vary by condition, with the highest rates in people with Dementia and Alzheimers (79.6%), and the lowest for respiratory conditions (41.0%).

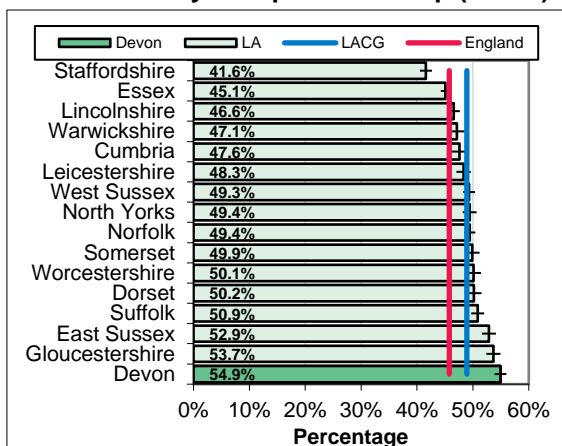
South West Benchmarking



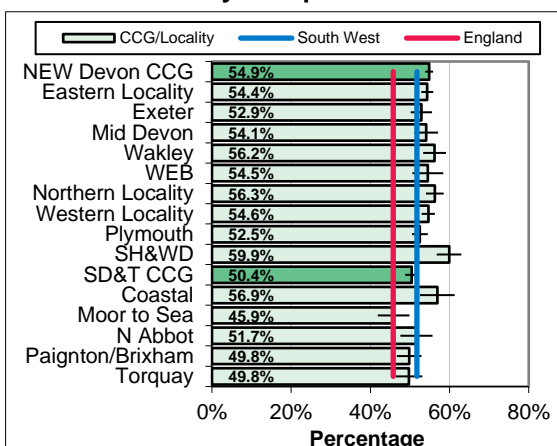
Local Authority District



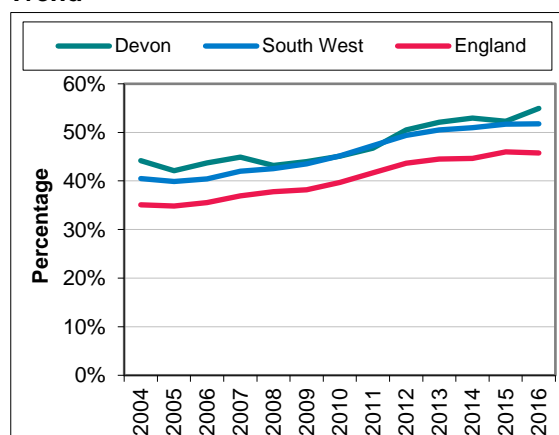
Local Authority Comparator Group (LACG)



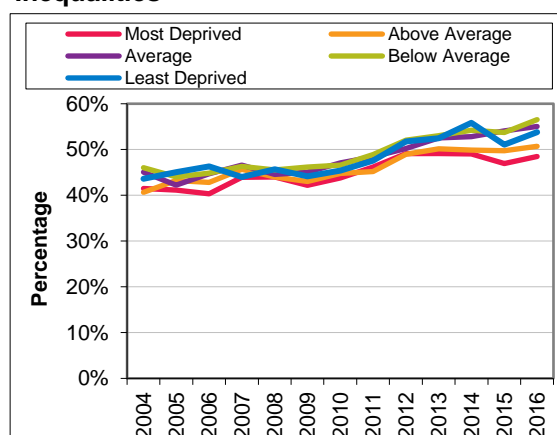
CCG and Locality Comparison



Trend



Inequalities



DEVON HEALTH AND WELLBEING OUTCOMES REPORT

INDICATOR SPECIFICATION

Priority 3: Good Health and Wellbeing in Older Age

Indicator: Deaths in usual place of residence

Period: 2016

Description	Deaths in usual place of residence (home, care home and religious establishments) as a percentage of all deaths
Source	End of Life Care Profiles and Primary Care Mortality Dataset
Update Frequency	Annual, 2017 due Autumn 2018
Outcomes Framework	Not applicable.
Detailed Specification	Place of death indicator calculated as: $(\text{Deaths at usual residence} / \text{All Deaths}) \times 100\%$ Usual residence is defined as: home, care homes (local authority and non-local authority) and religious establishments. Excludes all deaths from external causes defined by the International Classification of Diseases, Tenth Revision (ICD-10) Codes: V01 - Y89, U50.9. Figures are based on deaths registered, rather than deaths occurring in each year. Each year is based on latest available boundary and establishment type information. In very few cases, this might slightly differ from ONS
Chart Notes South West	Compares Upper Tier / Unitary Local Authorities in the South West Region. Error bar is 95% confidence interval.
Chart Notes Local Authority	Compares Local Authority Districts in the Devon County Council area. Error bar is 95% confidence interval.
Chart Notes Comparator	Compares Devon to similar upper tier / unitary local authorities using the 15 closest comparator councils from the Institute of Public Finance (IPF) statistical neighbours for 2015. Error bar is 95% confidence interval.
Chart Notes CCG/Locality	Displays rates for the two Clinical Commissioning Groups in the wider Devon area, their localities, and their sub-localities. This is based on the geographic areas defined at Lower Super Output Area level https://bit.ly/2kiz9zC . Error bar is 95% confidence interval.
Chart Notes Trend	Compares Devon rate with South West region and England over time.
Chart Notes Inequalities	Compares areas within Devon based on area deprivation. National deprivation quintiles from the 2015 Indices of Deprivation (Index of Multiple Deprivation) used.