

DEVON HEALTH AND WELLBEING OUTCOMES REPORT

Priority 4: Strong and Supportive Communities

Indicator: Percentage of offenders who reoffend within a year

Period: 2014

RAG Rating

G	Green
	Amber
	Red

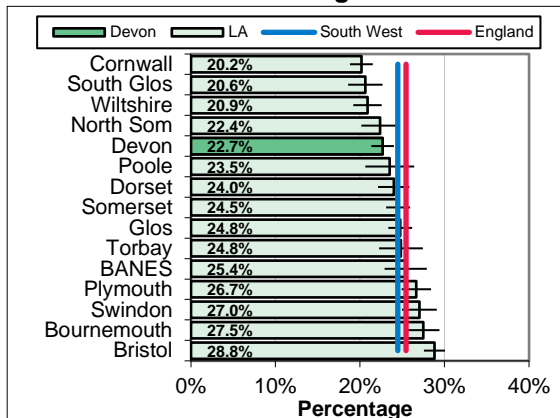
Overview

Of the 3,925 offenders recorded in the 12 month period, 890 were re-offenders. This represents 22.7% of the offender population in Devon, which is significantly below the South West (24.5%) and England (25.4%) rates and not significantly different to the local authority comparator group rate (24.0%). Within Devon, re-offending rates were highest in Exeter (28.0%). Re-offending rates have fallen over recent years in Devon.

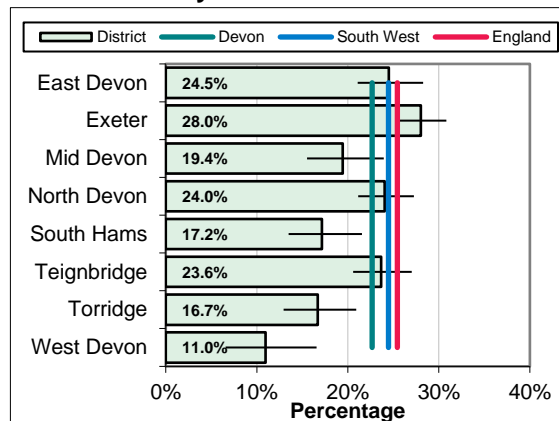
Equalities

Re-offending rates are higher in the most deprived areas of England (28.6%) than the least deprived areas (21.9%).

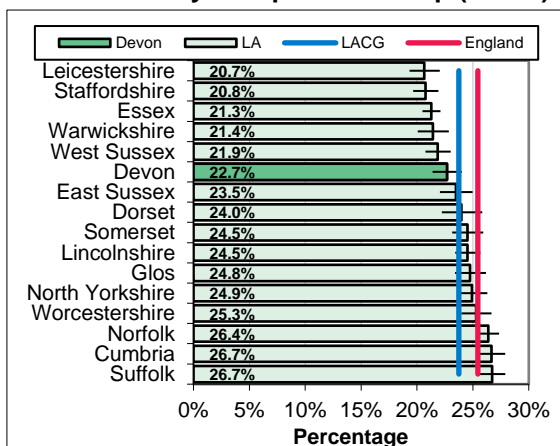
South West Benchmarking



Local Authority District



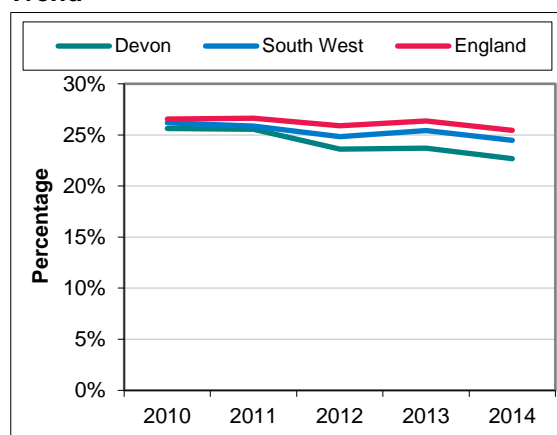
Local Authority Comparator Group (LACG)



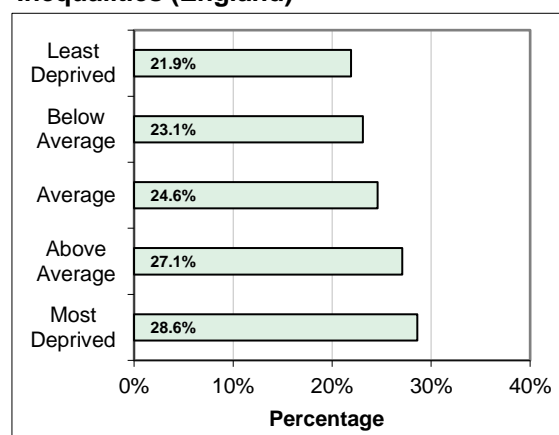
CCG and Locality Comparison

NOT CURRENTLY AVAILABLE AT CCG / LOCALITY LEVEL

Trend



Inequalities (England)



DEVON HEALTH AND WELLBEING OUTCOMES REPORT

INDICATOR SPECIFICATION

Priority 4: Strong and Supportive Communities

Indicator: Percentage of offenders who reoffend within a year

Period: 2014

Description	Percentage of offenders who re-offend from a rolling 12 month cohort
Source	Ministry of Justice
Update Frequency	Annual, around two years in arrears
Outcomes Framework	Public Health Outcomes Framework Indicator 1.13i
Detailed Specification	Indicator calculated by Public Health England: Knowledge and Intelligence Team (North West) using data from the Ministry of Justice. The numerator is the number of offenders in the cohort who are re-offenders, the denominator is the total number of offenders in the cohort.
Chart Notes South West	Compares Upper Tier / Unitary Local Authorities in the South West Region. Error bar is 95% confidence interval.
Chart Notes Local Authority	Compares Local Authority Districts in the Devon County Council area. Error bar is 95% confidence interval.
Chart Notes Comparator	Compares Devon to similar upper tier / unitary local authorities using the 15 closest comparator councils from the Institute of Public Finance (IPF) statistical neighbours for 2015. Error bar is 95% confidence interval.
Chart Notes CCG/Locality	Rates are not currently available at a Clinical Commissioning Group and locality level.
Chart Notes Trend	Compares Devon rate with South West region and England over time.
Chart Notes Inequalities	Compares areas within England based on area deprivation. National deprivation quintiles from the 2015 Indices of Deprivation (Index of Multiple Deprivation) used.