

PUBLIC HEALTH DEVON OUTCOMES REPORT

Domain 4. Healthcare Public Health

Indicator 4.04 Under 75 Mortality Rate - Circulatory Diseases

Period: 2014-2016

UPDATED INDICATOR

RAG Rating

G Green

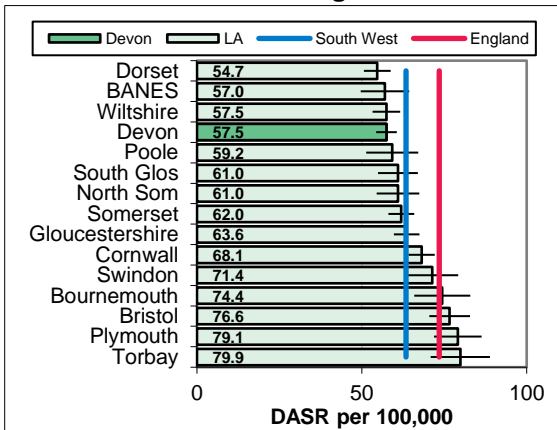
Amber

Red

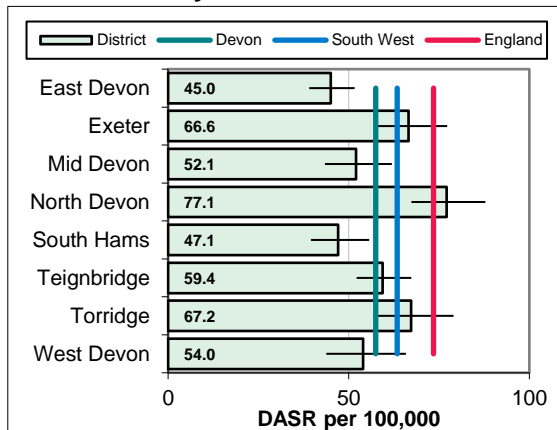
Overview
There are around 463 circulatory deaths annually in under 75s, with an direct age standardised rate of 57.5 per 100,000 for 2014-16. The Devon rate was below the South West (63.4), local authority comparator group (64.0) and England (73.5) rates. Within the county, rates are highest in North Devon, Exeter and Torridge. Mortality rates fell from 107.7 in 2001-03. In recent year the health inequality gap has narrowed considerably in Devon.

Equalities
Mortality from circulatory disease increases rapidly with age, with the highest mortality rates in under 75s in the 65 to 74 age group, and very few deaths in persons aged under 40. In Devon mortality rates are 2.5 times higher in males than females. The British Heart Foundation highlight that whilst risks did not vary considerably by ethnic group for females, white males were at higher risk.

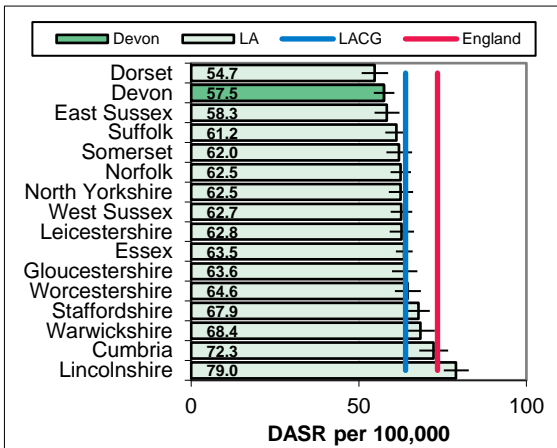
South West Benchmarking



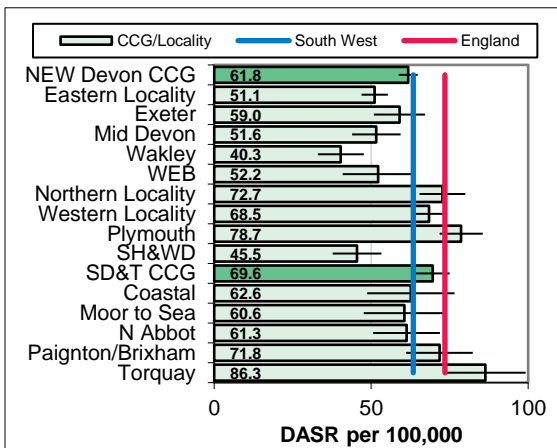
Local Authority District



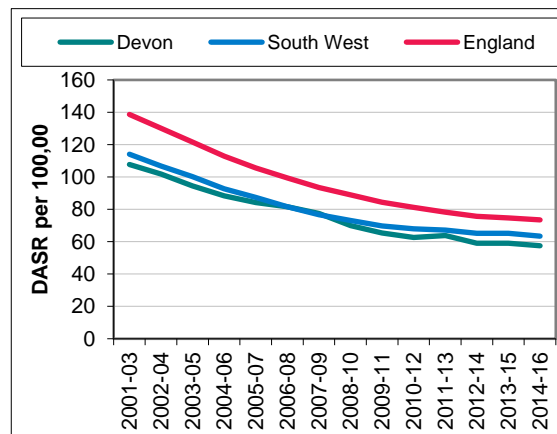
Local Authority Comparator Group



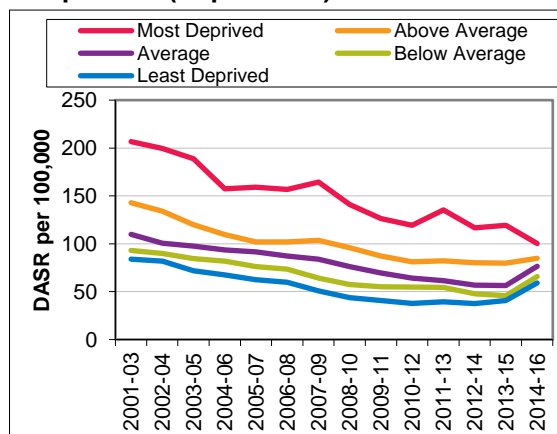
CCG and Locality Comparison



Trend



Inequalities (Deprivation)



PUBLIC HEALTH DEVON OUTCOMES REPORT INDICATOR SPECIFICATION

Domain 4. Healthcare Public Health

Indicator 4.04 Under 75 Mortality Rate - Circulatory Diseases

Period: 2014-2016

Description	Direct age-standardised rate (DASR) of mortality from all cardiovascular diseases (including heart disease and stroke) in persons less than 75 years per 100,000 population.
Source	Office for National Statistics annual death extracts (South West Benchmarking, Local Authority District, Trend and Local Authority Comparator Group). Devon Public Health Intelligence Team (Inequalities and CCG / Locality Comparison)
Update Frequency	Annual, 2017 data due autumn 2018
Outcomes Framework	Public Health Outcomes Framework Indicator 4.04i, NHS Outcomes Framework Indicator 1.1
Detailed Specification	Number of deaths from all cardiovascular diseases (classified by underlying cause of death recorded as ICD codes I00-I99) registered in the respective calendar years, in people aged under 75, aggregated into quinary age bands. Population for people aged under 75, aggregated into quinary age bands. Age specific rates are calculated and multiplied by the standard population for each age group and aggregated to give the age adjusted count of deaths for the area, and divided by the total standard population and multiplied by 100,000 to give the age standardised mortality rate for the area. The 2013 revision to the European Standard Population
Chart Notes South West	Compares Upper Tier / Unitary Local Authorities in the South West Region. Error bar is 95% confidence interval.
Chart Notes Local Authority	Compares Local Authority Districts in the Devon County Council area. Error bar is 95% confidence interval.
Chart Notes Comparator	Compares Devon to similar upper tier / unitary local authorities using the 15 closest comparator councils from the Institute of Public Finance (IPF) statistical neighbours. Error bar is 95% confidence interval.
Chart Notes CCG/Locality	Displays rates for the two Clinical Commissioning Groups in the wider Devon area, their localities, and their sub-localities. This is based on the geographic areas defined at Lower Super Output Area level www.devonhealthandwellbeing.org.uk/library/maps . Error bar is 95% confidence
Chart Notes Trend	Compares Devon rate with South West region and England over time.
Chart Notes Inequalities	Compares areas within Devon based on local GP practice deprivation quintiles. Calculated using the 2010 Indices of Deprivation (Index of Multiple Deprivation).