

PUBLIC HEALTH DEVON OUTCOMES REPORT

Domain 2. Health Improvement

Indicator 2.22 Percentage Offered an NHS Health Check

Period: 2017-18 Q2 cumulative

UPDATED INDICATOR

RAG Rating

Green

A Amber

Red

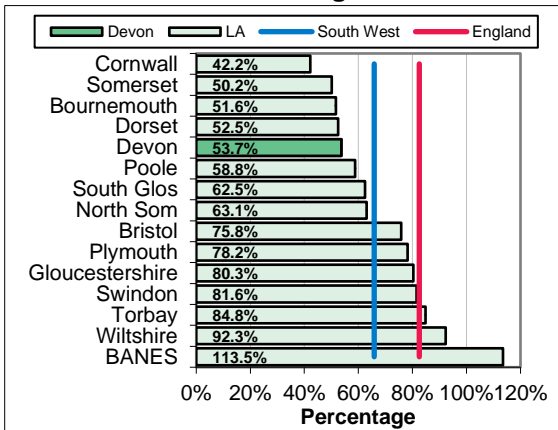
Overview

127,537 people in Devon have been offered a health check since April 2013. This represents 53.7% of the eligible population (237,435), which is below the South West (65.9%), local authority comparator group (84.3%) and England (82.5%) rates. Within Devon rates are highest in East Devon and the South Hams. Within local CCGs, rates are highest in the Paignton/Torquay locality.

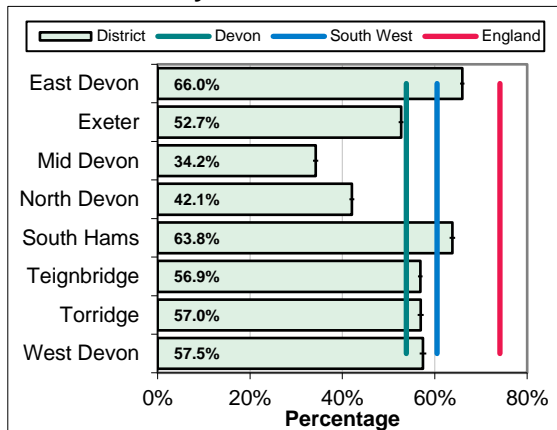
Equalities

Whilst practices covering areas with below average deprivation have the lowest offered rates, the pattern by deprivation is mixed and variable.

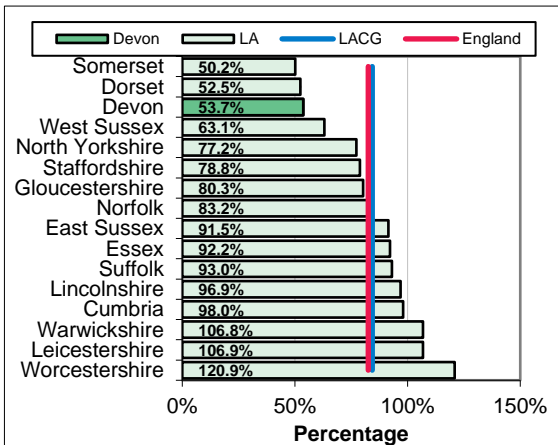
South West Benchmarking



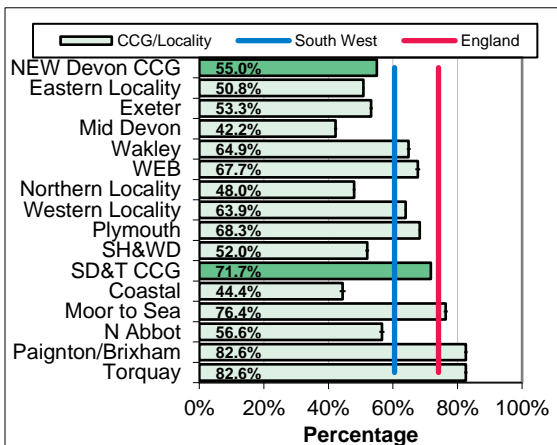
Local Authority District



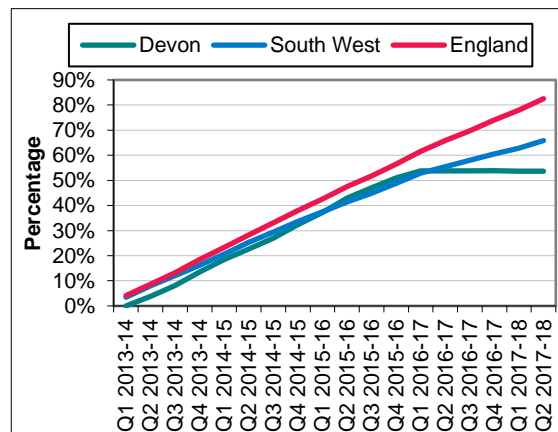
Local Authority Comparator Group



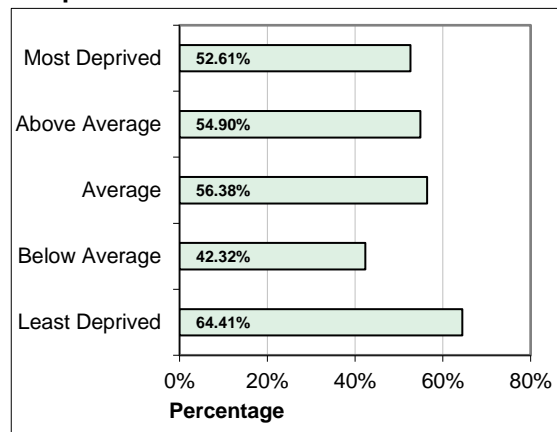
CCG and Locality Comparison



Trend



Inequalities



PUBLIC HEALTH DEVON OUTCOMES REPORT INDICATOR SPECIFICATION

Domain 2. Health Improvement

Indicator 2.22 Percentage Offered an NHS Health Check

Period: 2017-18 Q2 cumulative

Description	Percentage of eligible population aged 40-74 offered an NHS Health Check
Source	Public Health England: NHS Health Check website
Update Frequency	Quarterly, around three months in arrears
Outcomes Framework	Public Health Outcomes Framework Indicator 2.22
Detailed Specification	Numerator is number of people aged 40-74 eligible for an NHS Health Check who were offered an NHS Health Check in the financial year. Denominator is number of people aged 40-74 eligible for an NHS Health Check in the financial year. Percentage of eligible population aged 40-74 offered an NHS Health Check: the number of eligible people aged 40-74 who were offered an NHS Health Check is divided by the number of eligible people aged 40-74 and multiplied by 100.
Chart Notes South West	Compares Upper Tier / Unitary Local Authorities in the South West Region. Error bar is 95% confidence interval.
Chart Notes Local Authority	Compares Local Authority Districts in the Devon County Council area. Error bar is 95% confidence interval.
Chart Notes Comparator	Compares Devon to similar upper tier / unitary local authorities using the 15 closest comparator councils from the Institute of Public Finance (IPF) statistical neighbours. Error bar is 95% confidence interval.
Chart Notes CCG/Locality	Displays rates for the two Clinical Commissioning Groups in the wider Devon area, their localities, and their sub-localities. This is based on GP practice attributions. Error bar is 95% confidence interval.
Chart Notes Trend	Compares Devon rate with South West region and England over time.
Chart Notes Inequalities	Compares areas within Devon based on local GP practice deprivation quintiles. Calculated using the 2010 Indices of Deprivation (Index of Multiple Deprivation).