

# PUBLIC HEALTH DEVON OUTCOMES REPORT

## Priority 1. Improving the Wider Determinants of Health

### Indicator 1.17 Fuel Poverty

Period: 2015

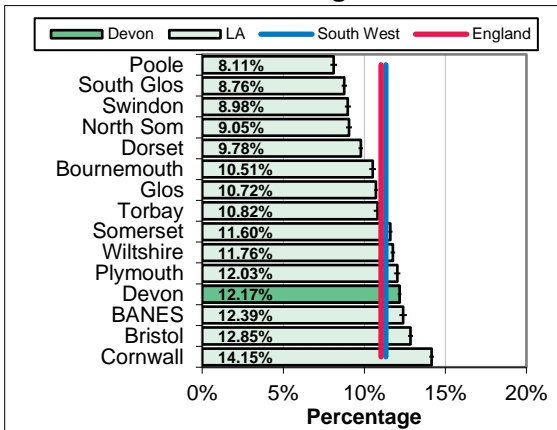
#### RAG Rating

	Green
A	Amber
	Red

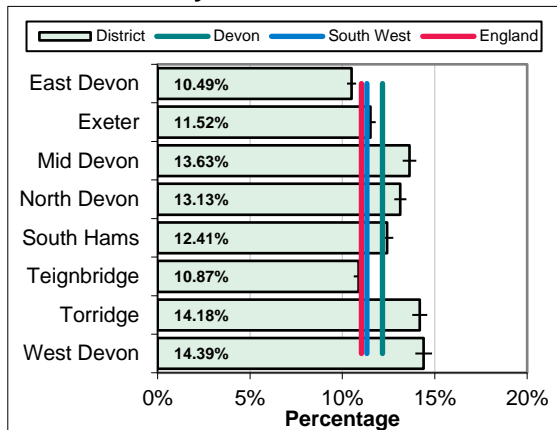
**Overview**  
Just under one in eight households in Devon are in fuel poverty (12.17%), which is above the South West (11.33%), local authority comparator group (10.38%), and England (11.03%) rates. Within Devon the highest levels of fuel poverty were seen in West Devon (14.39%) and the lowest were seen in East Devon (10.49%). Levels of fuel poverty increased between 2011 and 2014 in Devon but fell or remained stable in many other areas of the country. Rates fell slightly between 2014 and 2015.

**Equalities**  
Fuel poverty is more prevalent in groups with low household incomes, including pensioners, persons on benefits, and working families with below average incomes. The low wage economy, particularly in North and West Devon and higher living costs contribute to levels of fuel poverty locally. Fuel poverty is highest and has increased fastest in the most deprived areas.

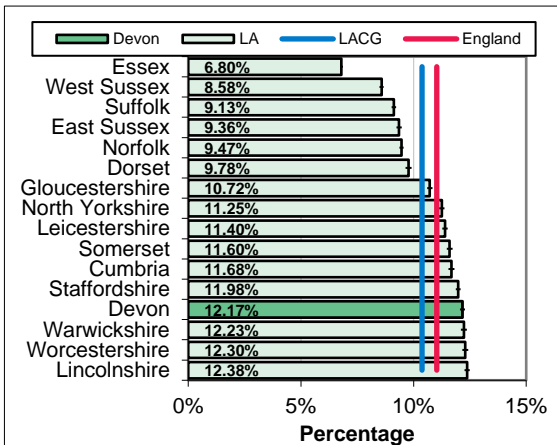
#### South West Benchmarking



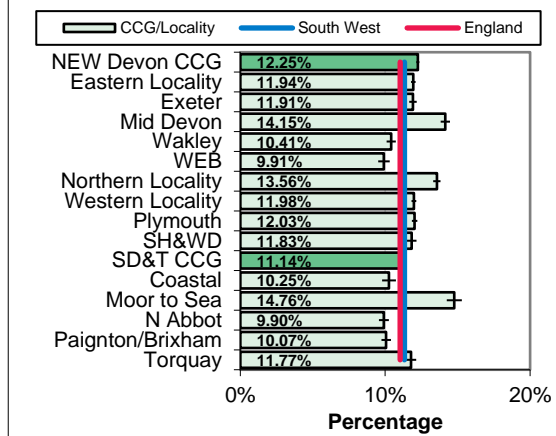
#### Local Authority District



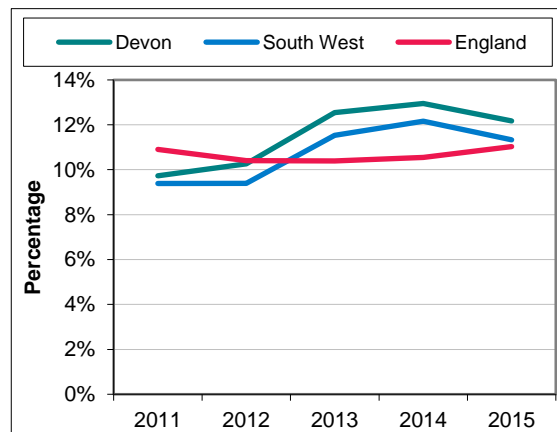
#### Local Authority Comparator Group



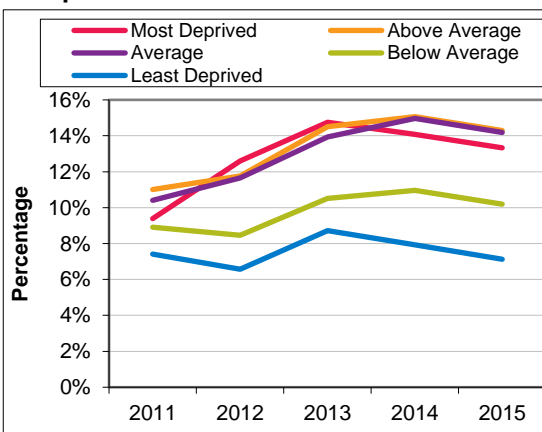
#### CCG and Locality Comparison



#### Trend



#### Inequalities



## PUBLIC HEALTH DEVON OUTCOMES REPORT INDICATOR SPECIFICATION

**Domain 1.** Improving the Wider Determinants of Health

**Indicator 1.17** Fuel Poverty

**Period:** 2015

<b>Description</b>	The percentage of households that experience fuel poverty based on the "Low income, high cost" methodology
<b>Source</b>	Department of Energy and Climate Change (DECC) <a href="https://www.gov.uk/government/publications/2012-sub-regional-fuel-poverty-data-low-income-high-costs-indicator">https://www.gov.uk/government/publications/2012-sub-regional-fuel-poverty-data-low-income-high-costs-indicator</a>
<b>Update Frequency</b>	Annually, around 18 months in arrears
<b>Outcomes Framework</b>	Public Health Outcomes Framework Indicator 1.17
<b>Detailed Specification</b>	Under the "Low Income, High Cost" measure, households are considered to be fuel poor where: 1.They have required fuel costs that are above average (the national median level) 2.Were they to spend that amount, they would be left with a residual income below the official fuel poverty line. The key elements in determining whether a household is fuel poor or not are income, fuel prices, fuel consumption (which is dependent on the dwelling characteristics and the lifestyle of the household)
<b>Chart Notes South West</b>	Compares Upper Tier / Unitary Local Authorities in the South West Region. Error bar is 95% confidence interval.
<b>Chart Notes Local Authority</b>	Compares Local Authority Districts in the Devon County Council area. Error bar is 95% confidence interval.
<b>Chart Notes Comparator</b>	Compares Devon to similar upper tier / unitary local authorities using the 15 closest comparator councils from the Institute of Public Finance (IPF) statistical neighbours. Error bar is 95% confidence interval.
<b>Chart Notes CCG/Localities</b>	Displays rates for the two Clinical Commissioning Groups in the wider Devon area, their localities, and their sub-localities. This is based on the geographic areas defined at Lower Super Output Area level <a href="http://www.devonhealthandwellbeing.org.uk/library/maps">www.devonhealthandwellbeing.org.uk/library/maps</a> . Error bar is 95% confidence
<b>Chart Notes Trend</b>	Compares Devon rate with South West region and England over time.
<b>Chart Notes Inequalities</b>	Compares areas within Devon based on area deprivation. National deprivation quintiles from the 2010 Indices of Deprivation (Index of Multiple Deprivation) used.