

PUBLIC HEALTH DEVON OUTCOMES REPORT

Domain 4. Healthcare Public Health

Indicator 4.05 Under 75 Mortality Rate - All Cancers

Period: 2014-2016

RAG Rating

G Green

Amber

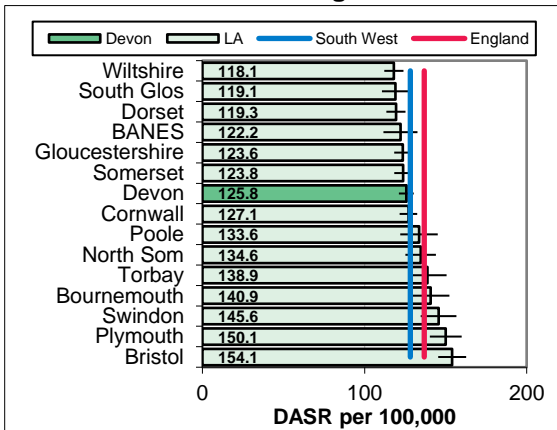
Red

UPDATED INDICATOR

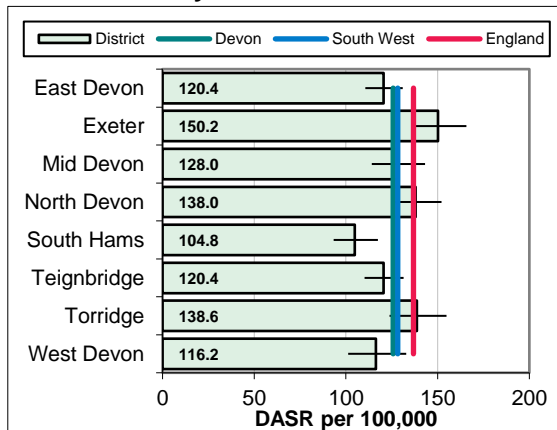
Overview There are around 1,000 deaths annually due to cancer in under 75s, with an direct age standardised rate of 125.8 per 100,000 for 2014-16. The Devon rate was below the South West (128.2), local authority comparator group (127.70), and England (136.8) rates. Within the county, rates are highest in Exeter (150.2). Mortality rates by year have fallen from 157.2 in 2001-03. Mortality rates are higher in more deprived areas.

Equalities Mortality from cancer increases rapidly with age, with the highest mortality rates in under 75s in the 65 to 74 age group. Mortality rates from cancer are around 20% higher in males than females in England. In terms of ethnicity, Cancer Research UK suggests higher mortality rates in white groups, although survival rates for breast cancer are lower in Asian and Black ethnic groups.

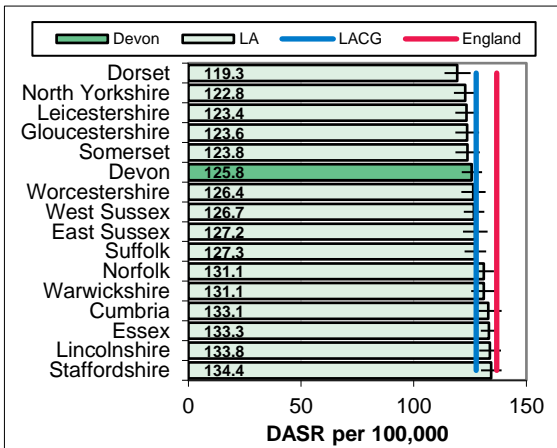
South West Benchmarking



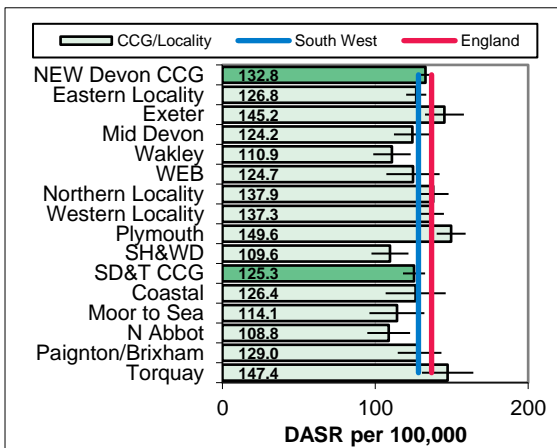
Local Authority District



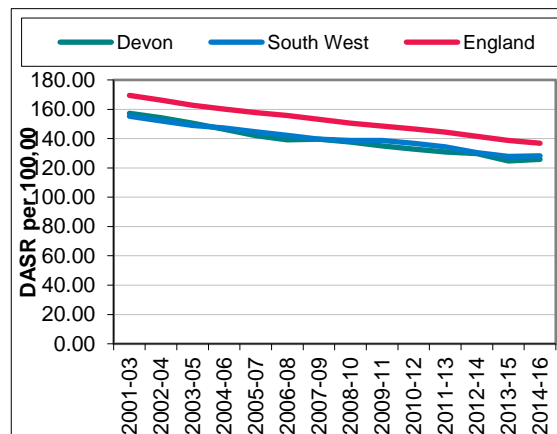
Local Authority Comparator Group



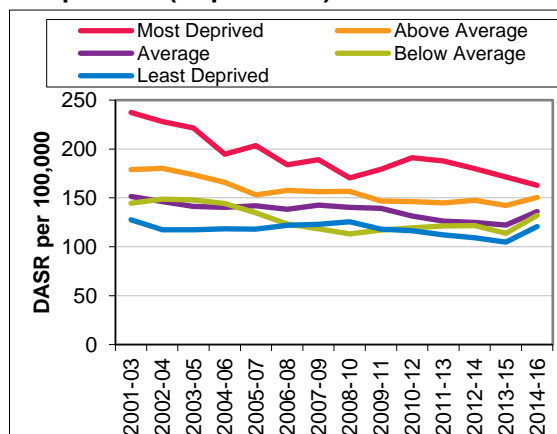
CCG and Locality Comparison



Trend



Inequalities (Deprivation)



PUBLIC HEALTH DEVON OUTCOMES REPORT INDICATOR SPECIFICATION

Domain 4. Healthcare Public Health
Indicator 4.05 Under 75 Mortality Rate - All Cancers
Period: 2014-2016

Description	Direct age-standardised rate (DASR) of mortality from all cancers in persons less than 75 years per 100,000 population
Source	Office for National Statistics annual death extracts (South West Benchmarking, Local Authority District, Trend and Local Authority Comparator Group). Devon Public Health Intelligence Team (Inequalities and CCG / Locality Comparison)
Update Frequency	Annual, 2017 data due autumn 2018
Outcomes Framework	Public Health Outcomes Framework Indicator 4.05i, NHS Outcomes Framework Indicator 1.4
Detailed Specification	Number of deaths from all cancers (classified by underlying cause of death recorded as ICD codes C00-C97) registered in the respective calendar years, in people aged under 75, aggregated into quinary age bands. Population for people aged under 75, aggregated into quinary age bands. Age specific rates are calculated and multiplied by the standard population for each age group and aggregated to give the age adjusted count of deaths for the area, and divided by the total standard population and multiplied by 100,000 to give the age standardised mortality rate for the area. The 2013 revision to the European Standard Population has been used for this
Chart Notes South West	Compares Upper Tier / Unitary Local Authorities in the South West Region. Error bar is 95% confidence interval.
Chart Notes Local Authority	Compares Local Authority Districts in the Devon County Council area. Error bar is 95% confidence interval.
Chart Notes Comparator	Compares Devon to similar upper tier / unitary local authorities using the 15 closest comparator councils from the Institute of Public Finance (IPF) statistical neighbours. Error bar is 95% confidence interval.
Chart Notes CCG/Locality	Displays rates for the two Clinical Commissioning Groups in the wider Devon area, their localities, and their sub-localities. This is based on the geographic areas defined at Lower Super Output Area level www.devonhealthandwellbeing.org.uk/library/maps . Error bar is 95% confidence
Chart Notes Trend	Compares Devon rate with South West region and England over time.
Chart Notes Inequalities	Compares areas within Devon based on local GP practice deprivation quintiles. Calculated using the 2010 Indices of Deprivation (Index of Multiple Deprivation).