

# DEVON HEALTH AND WELLBEING OUTCOMES REPORT

## Priority 1: Children, Young People and Families

### Indicator: Children in Poverty

Period: 2015

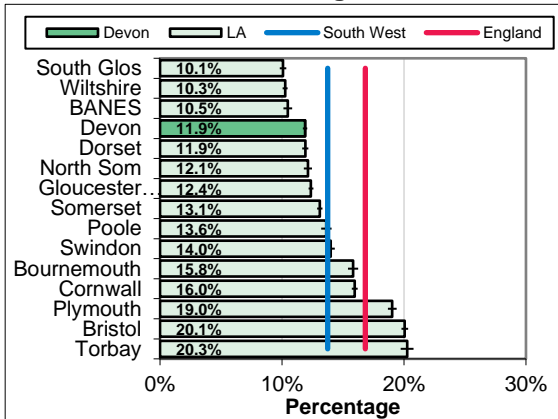
#### RAG Rating

|   |       |
|---|-------|
|   | Green |
| A | Amber |
|   | Red   |

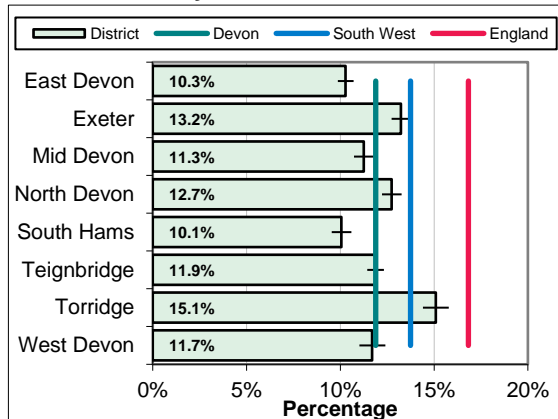
**Overview** 14,460 children (11.9%) in Devon live in households dependent on benefits or tax credits, compared with 13.7% in the South West, 15.2% for the local authority comparator group and 16.8% nationally. Child poverty rates decreased between 2014 and 2015. Rates at a district level range from 10.1% in South Hams to 15.1% in Torridge.

**Equalities** Considerable variation exists between Devon's communities. Rates of child poverty are higher in younger families due to higher benefit claimant rates and lower incomes in persons in their 20s and 30s. Single parent households, particularly where headed by a female, are also more likely to experience economic poverty, as are children of disabled parents. There are no significant variations by ethnic group

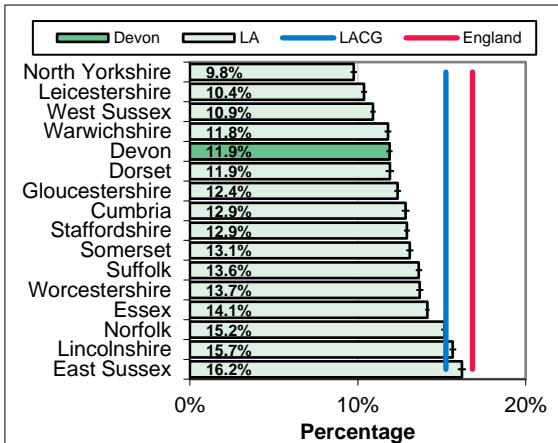
#### South West Benchmarking



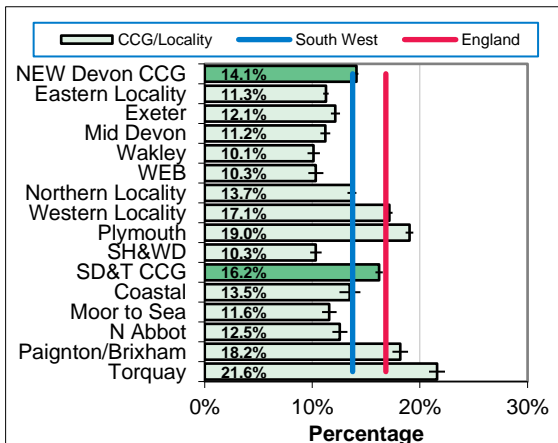
#### Local Authority District



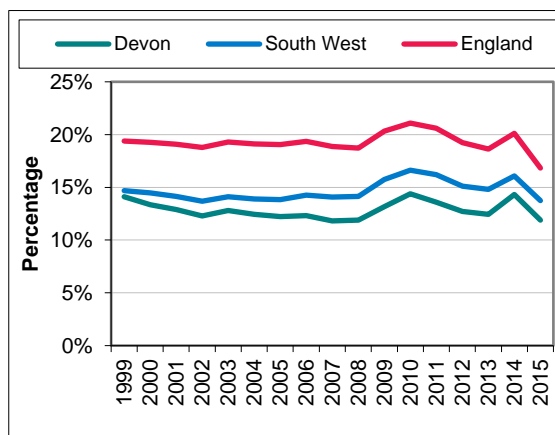
#### Local Authority Comparator Group (LACG)



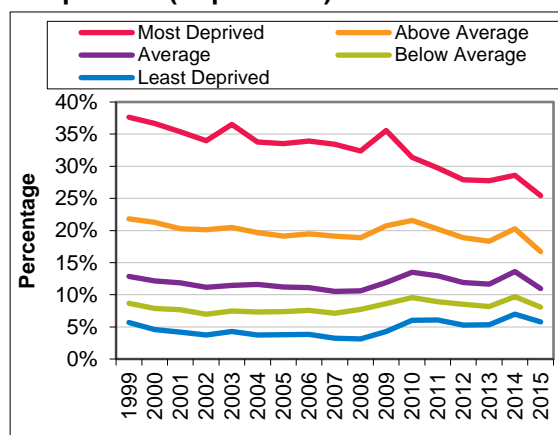
#### CCG and Locality Comparison



#### Trend



#### Inequalities (Deprivation)



# DEVON HEALTH AND WELLBEING OUTCOMES REPORT

## INDICATOR SPECIFICATION

**Priority 1:** A Focus on Children and Families

**Indicator:** Children in Poverty

**Period:** 2015

|                                    |                                                                                                                                                                                                                                                                                                                  |
|------------------------------------|------------------------------------------------------------------------------------------------------------------------------------------------------------------------------------------------------------------------------------------------------------------------------------------------------------------|
| <b>Description</b>                 | Percentage of children (aged 0 to 15) living in households dependent on benefits or tax credits.                                                                                                                                                                                                                 |
| <b>Source</b>                      | HM Revenue and Customs (Personal Tax Credits: Related Statistics - Child Poverty Statistics)                                                                                                                                                                                                                     |
| <b>Update Frequency</b>            | Annually, around 20 months in arrears (2016 due February 2019)                                                                                                                                                                                                                                                   |
| <b>Outcomes Framework</b>          | Public Health Outcomes Framework Indicator 2.01                                                                                                                                                                                                                                                                  |
| <b>Detailed Specification</b>      | Children living in families in receipt of Child Tax Credit (CTC) whose reported income is less than 60 per cent of the median income or are in receipt of income support (IS) or Income-Based Jobseeker's Allowance (JSA), as a proportion of the total number of children in the area.                          |
| <b>Chart Notes South West</b>      | Compares Upper Tier / Unitary Local Authorities in the South West Region. Error bar is 95% confidence interval.                                                                                                                                                                                                  |
| <b>Chart Notes Local Authority</b> | Compares Local Authority Districts in the Devon County Council area. Error bar is 95% confidence interval.                                                                                                                                                                                                       |
| <b>Chart Notes Comparator</b>      | Compares Devon to similar upper tier / unitary local authorities using the 15 closest comparator councils from the Institute of Public Finance (IPF) statistical neighbours for 2015. Error bar is 95% confidence interval.                                                                                      |
| <b>Chart Notes CCG/Locality</b>    | Displays rates for the two Clinical Commissioning Groups in the wider Devon area, their localities, and their sub-localities. This is based on the geographic areas defined at Lower Super Output Area level <a href="https://bit.ly/2kiz9zC">https://bit.ly/2kiz9zC</a> . Error bar is 95% confidence interval. |
| <b>Chart Notes Trend</b>           | Compares Devon rate with South West region and England over time.                                                                                                                                                                                                                                                |
| <b>Chart Notes Inequalities</b>    | Compares areas within Devon based on area deprivation. National deprivation quintiles from the 2015 Indices of Deprivation (Index of Multiple Deprivation) used.                                                                                                                                                 |