

DEVON HEALTH AND WELLBEING OUTCOMES REPORT

Priority 3: Good Health and Wellbeing in Older Age

Indicator: Re-ablement Services (Effectiveness)

Period: 2016-17

RAG Rating

G Green

Amber

Red

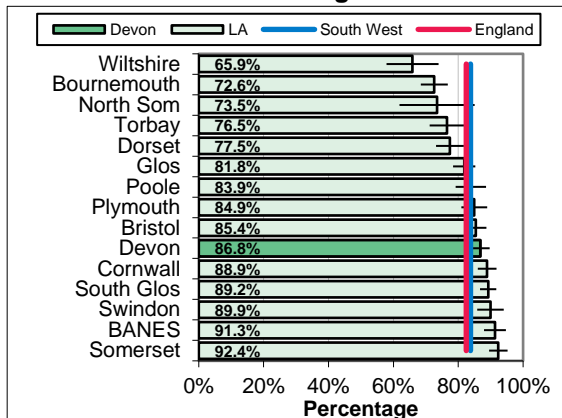
Overview

In 2016-17, reablement services were effective for 86.8% of older people who received the service in Devon, which was significantly higher than the South West (83.7%), local authority comparator group (83.0%) and England (82.4%) rates. The rate has decreased slightly from 89.8% in 2013-14. Within Devon the highest rates was seen in West Devon (96.7%).

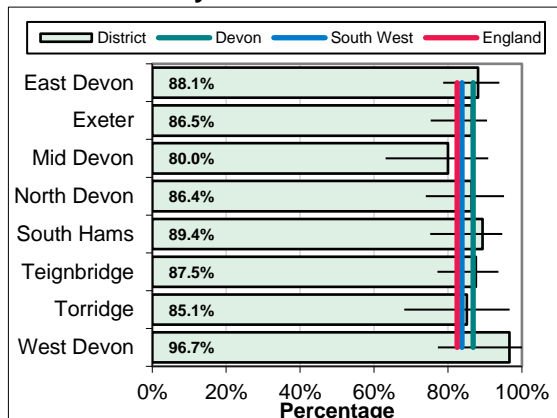
Equalities

There is no clear pattern between the effectiveness of reablement services and deprivation levels in Devon.

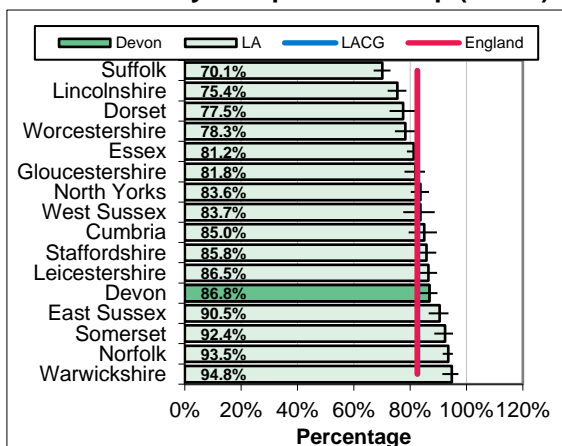
South West Benchmarking



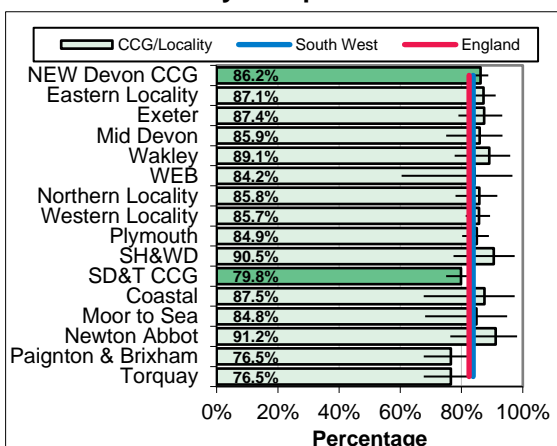
Local Authority District



Local Authority Comparator Group (LACG)



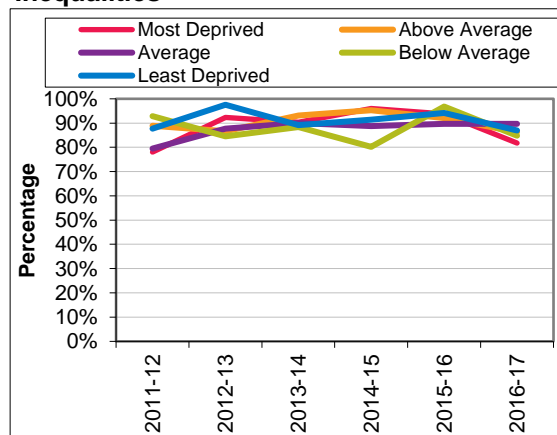
CCG and Locality Comparison



Trend



Inequalities



DEVON HEALTH AND WELLBEING OUTCOMES REPORT

INDICATOR SPECIFICATION

Priority 3: Good Health and Wellbeing in Older Age

Indicator: Re-ablement Services (Effectiveness)

Period: 2016-17

Description	Proportion of older people (65 and over) who were still at home 91 days after discharge from hospital into reablement/rehabilitation services.
Source	Adult Social Care Combined Activity Return. National Adult Social Care Intelligence Service (SW Benchmarking, Trend and Comparator Group) DCC Management Information Team (local breakdowns)
Update Frequency	Annually around seven months in arrears, 2017-18 due in October 2018.
Outcomes Framework	Adult Social Care Outcomes Framework Indicator 2B Part 1
Detailed Specification	The proportion of older people aged 65 and over discharged from hospital to their own home or to a residential or nursing care home or extra care housing for rehabilitation, with a clear intention that they will move on/back to their own home (including a place in extra care housing or an adult placement scheme setting), who are at home or in extra care housing or an adult placement scheme setting 91 days after the date of their discharge from hospital.
Chart Notes South West	Compares Upper Tier / Unitary Local Authorities in the South West Region. Error bar is 95% confidence interval.
Chart Notes Local Authority	Compares Local Authority Districts in the Devon County Council area. Error bar is 95% confidence interval.
Chart Notes Comparator	Compares Devon to similar upper tier / unitary local authorities using the 15 closest comparator councils from the Institute of Public Finance (IPF) statistical neighbours for 2015. Error bar is 95% confidence interval.
Chart Notes CCG/Locality	Displays rates for the two Clinical Commissioning Groups in the wider Devon area, their localities, and their sub-localities. Error bar is 95% confidence interval.
Chart Notes Trend	Compares Devon rate with South West region and England over time.
Chart Notes Inequalities	Compares areas within Devon based on local GP practice deprivation quintiles. Calculated using the 2015 Indices of Deprivation (Index of Multiple Deprivation).