

DEVON HEALTH AND WELLBEING OUTCOMES REPORT

Priority 1: Children, Young People and Families

Indicator: GCSE Attainment

Period: 2016-17

UPDATED INDICATOR

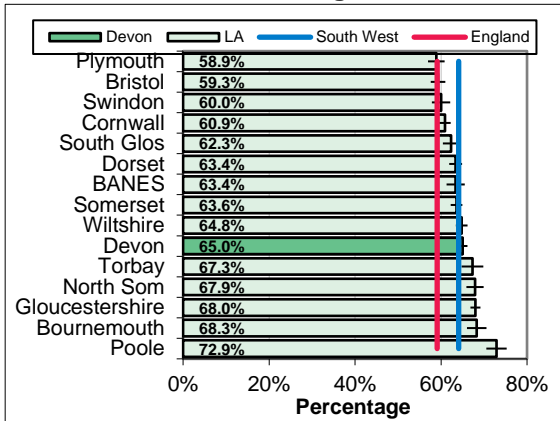
RAG Rating

	Green
A	Amber
	Red

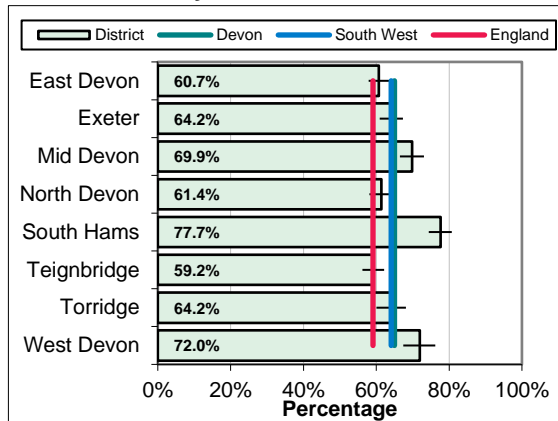
Overview
 In 2016-17, 65.0% of year 11 pupils in Devon achieved five or more GCSEs at grades equivalent to A* to C, including English and Maths. This is above, but not significantly different to the South West (64.1%), local authority comparator group (62.5%), and England (59.1%) rates. Rates in Devon are highest in the South Hams (77.7%) and West Devon (72.0%) and lowest in Teignbridge (59.2%) and East Devon (60.7%).

Equalities
 Attainment levels are lowest in the most deprived areas. For other characteristics, nationally girls (62.6%) are more likely to meet the standard than boys (53.8%), with lower rates for pupils with English as another language (62.5%), eligible for free school meals (40.3%) and with special educational needs (25.0%).

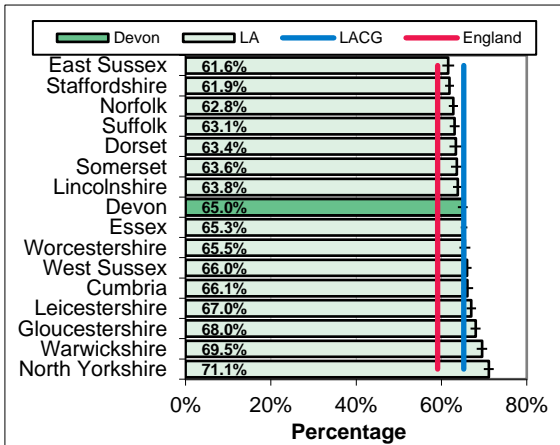
South West Benchmarking



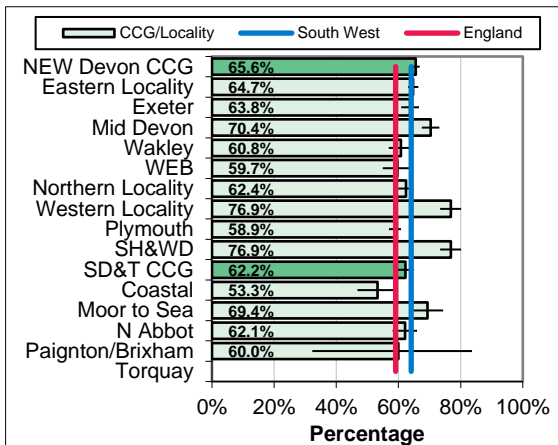
Local Authority District



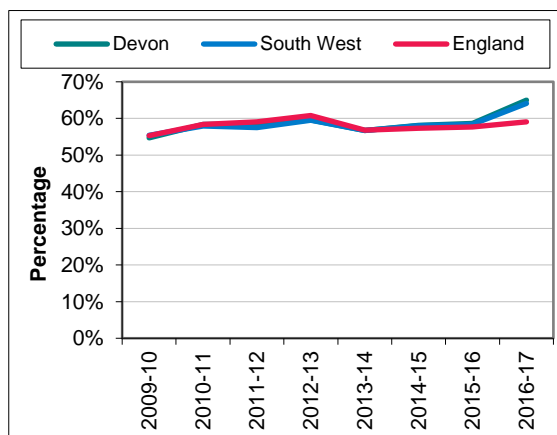
Local Authority Comparator Group (LACG)



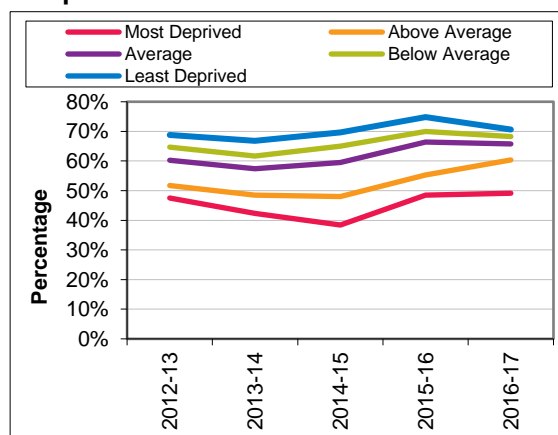
CCG and Locality Comparison



Trend



Inequalities



DEVON HEALTH AND WELLBEING OUTCOMES REPORT

INDICATOR SPECIFICATION

Priority 1: Children, Young People and Families

Indicator: GCSE Attainment

Period: 2016-17

Description	Percentage of pupils achieving five or more GCSEs equivalent to grades A to C including English and Maths.
Source	Department for Education, GCSE and equivalent results
Update Frequency	Annually, 2017-18 due January 2019
Outcomes Framework	Not applicable.
Detailed Specification	Number of pupils at end of Key Stage 4 in schools maintained by the local education authority (includes special schools and pupil referral units) achieving five or more GCSEs at grades A* to C or equivalent, including English and maths GCSE as a percentage of all pupils at end of Key Stage 4.
Chart Notes South West	Compares Upper Tier / Unitary Local Authorities in the South West Region. Error bar is 95% confidence interval.
Chart Notes Local Authority	Compares Local Authority Districts in the Devon County Council area. Error bar is 95% confidence interval.
Chart Notes Comparator	Compares Devon to similar upper tier / unitary local authorities using the 15 closest comparator councils from the Institute of Public Finance (IPF) statistical neighbours for 2015. Error bar is 95% confidence interval.
Chart Notes CCG/Locality	Displays rates for the two Clinical Commissioning Groups in the wider Devon area, their localities, and their sub-localities. This is based on the geographic areas defined at Lower Super Output Area level https://bit.ly/2kiz9zC . Error bar is 95% confidence interval.
Chart Notes Trend	Compares Devon rate with South West region and England over time.
Chart Notes Inequalities	Compares areas within Devon based on area deprivation. National deprivation quintiles from the 2015 Indices of Deprivation (Index of Multiple Deprivation) used.