

# PUBLIC HEALTH DEVON OUTCOMES REPORT

Priority 1. Improving the Wider Determinants of Health

Indicator 1.18 Social Contentedness

Period: 2016-17

## RAG Rating

Green

**A** Amber

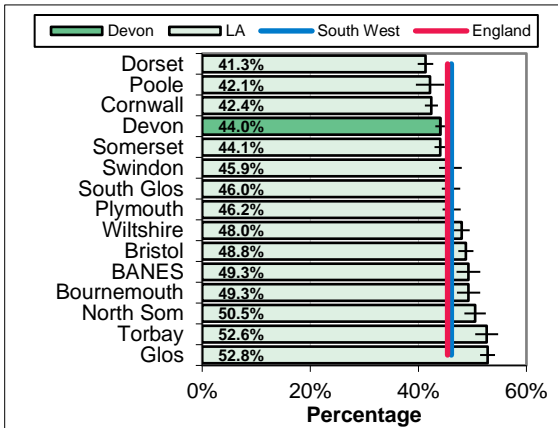
Red

**\*UPDATED INDICATOR\***

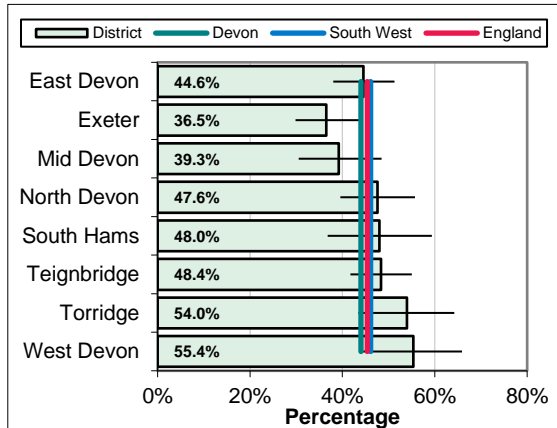
**Overview**  
44.0% of social care users surveyed in Devon in 2016-17 reported being satisfied with their social situation. This was below the England (45.4%) rate and significantly below the South West (46.1%), local authority comparator group (47.2%) rates. Within Devon whilst there is some variation in responses at district level, smaller sample sizes mean the differences are not statistically significant.

**Equalities**  
Female social care users in Devon reported being more satisfied with their social situation than male social care users. Social care users with Learning Disabilities reported being the most satisfied with their level of social contact compared with other client groups.

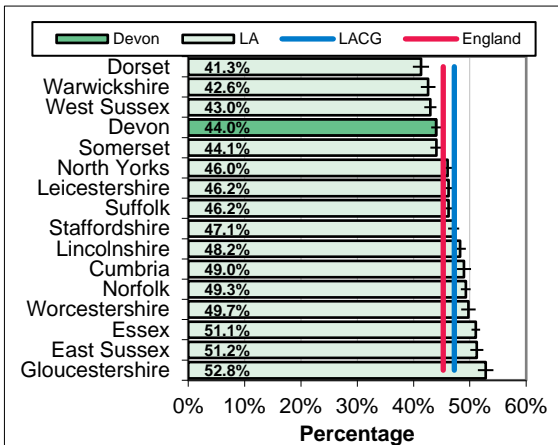
### South West Benchmarking



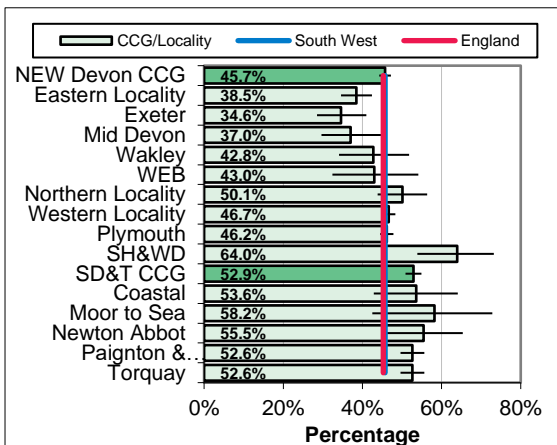
### Local Authority District



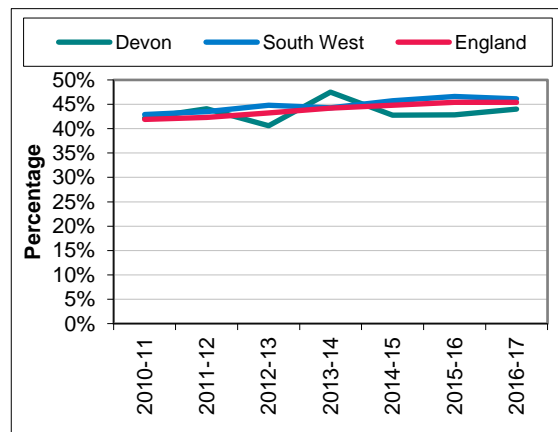
### Local Authority Comparator Group



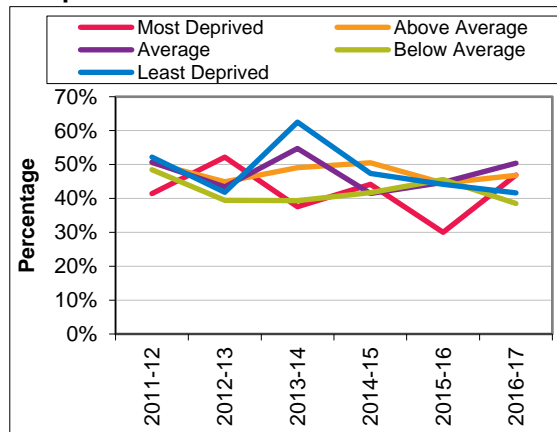
### CCG and Locality Comparison



### Trend



### Inequalities



## PUBLIC HEALTH DEVON OUTCOMES REPORT INDICATOR SPECIFICATION

**Domain 1.** Improving the Wider Determinants of Health

**Indicator 1.18** Social Contentedness

**Period:** 2016-17

<b>Description</b>	Proportion of people who use services who reported that they had as much social contact as they would like.
<b>Source</b>	Adult Social Care Survey and Carers Survey. National Adult Social Care Intelligence Service (SW Benchmarking, Trend and Comparator Group) DCC Management Information Team (District, Inequalities and CCG / Locality Comparison)
<b>Update Frequency</b>	Annually around seven months in arrears, 2017-18 due in October 2018.
<b>Outcomes Framework</b>	Adult Social Care Outcomes Framework Indicator 1i, Public Health Outcomes Framework Indicator 1.18
<b>Detailed Specification</b>	The percentage of users responding "I have as much contact as I want with people I like" and carers choosing "I have as much contact as I want" to questions based on their social situation in the Adult Social Care Survey and Carers Survey. Currently just measuring social care users. Measures for users and carers will be presented separately
<b>Chart Notes South West</b>	Compares Upper Tier / Unitary Local Authorities in the South West Region. Error bar is 95% confidence interval.
<b>Chart Notes Local Authority</b>	Compares Local Authority Districts in the Devon County Council area. Error bar is 95% confidence interval.
<b>Chart Notes Comparator</b>	Compares Devon to similar upper tier / unitary local authorities using the 15 closest comparator councils from the Institute of Public Finance (IPF) statistical neighbours. Error bar is 95% confidence interval.
<b>Chart Notes CCG/Locality</b>	Displays rates for the two Clinical Commissioning Groups in the wider Devon area, their localities, and their sub-localities. This is based on the geographic areas defined at Lower Super Output Area level <a href="http://www.devonhealthandwellbeing.org.uk/library/maps">www.devonhealthandwellbeing.org.uk/library/maps</a> . Error bar is 95% confidence
<b>Chart Notes Trend</b>	Compares Devon rate with South West region and England over time.
<b>Chart Notes Inequalities</b>	Compares areas within Devon based on area deprivation. National deprivation quintiles from the 2010 Indices of Deprivation (Index of Multiple Deprivation) used.