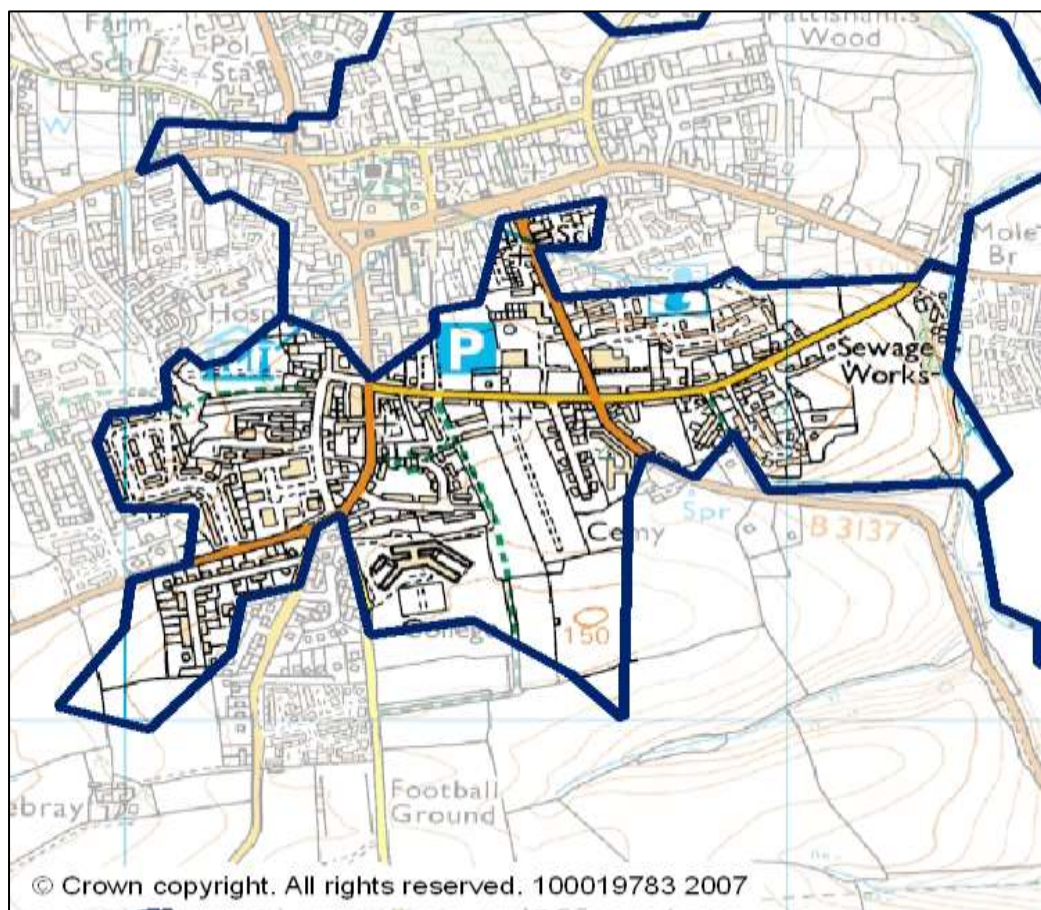


# DEVON JSNA COMMUNITY PROFILE 2017

## LOWER SUPER OUTPUT AREA (LSOA) BASED

### E01020135

<b>Description</b>	South Molton - College, Mill Street, Poltimore Road areas
<b>Deprivation Group</b>	Q2 - Above Average
<b>District</b>	North Devon
<b>County</b>	Devon
<b>CCG</b>	NEW Devon CCG
<b>CCG Locality</b>	Northern Locality



<b>Last updated:</b>	June 2017
<b>Queries to:</b>	<a href="mailto:maria.moloney-lucey@devon.gov.uk">maria.moloney-lucey@devon.gov.uk</a>
<b>Next update due:</b>	June 2018
<b>Author:</b>	Maria Lucey, Senior Public Health Analyst, Devon County Council
<b>Contributors:</b>	Julie Ashall, Melanie Burke, Carla Calzavacca, Eddie Smith, Louise Hann, Mark Painter, Ian Poole, Caroline Smith, Simon Chant (Devon County Council), Suzie Winter (Babcock LDP), Ben Johnson (NEW Devon CCG), Andy Tellham (Careers South West), Sue Rook and Christine Cherop (Devon Partnership Trust)

# ABOUT THESE PROFILES

## OVERVIEW

This is the Devon Joint Strategic Needs Assessment (JSNA) Community Profile for E01020135.

The aim of the JSNA is to collaboratively identify current and future health and wellbeing needs to inform future service planning and delivery. This profile contains a range of socio-economic, health, care and wellbeing related data, which provide a detailed assessment of current need and service activity at a local level. In addition to data relating to E01020135, information is provided for the hierarchy that the area is within as set out at the top of page 1:

Deprivation Group - based on the area's rank nationally in the Index of Multiple Deprivation 2015  
 District - based on local authority district  
 County - based on administrative county  
 CCG hierarchy - based on CCG (Clinical Commissioning Group), locality and sub-locality of residence

This profile shows the current position of E01020135 relative to this hierarchy both for the current year and historically. This report was created by the Devon Public Health Intelligence Team with assistance from the contributors listed on page 1.

This report contains indicators on population, deprivation, children and young people, uptake of benefits, health-related behaviour, and health and care activity and outcomes. Page contents are set out to the right. Information on sources and definitions are provided on page 42. Except for modelled data, rates are not available for counts of less than five. These are marked with a '#'.

## CONTENTS

Page	Section
3	Indicator Summary
4	2011 Census Profile
5	Population
6	Index Of Multiple Deprivation
7	Indices Of Deprivation Domains
8	Indices Of Deprivation Sub-Domains
9	Income Deprivation
10	Employment Deprivation
11	Birth Rate
12	Early Help DAF Assessments
13	Children In Need
14	Safeguarding Enquiries (MASH)
15	English As An Additional Language
16	Special Educational Needs
17	Pupils In Well Rated Schools
18	GCSE Attainment: Five or More A*-C
19	Not In Education, Employment Or Training
20	Working Age Benefit Claimant Rate
21	Aged 16 To 24 Benefit Claimant Rate
22	ESA or Incapacity Benefit Claimant Rate
23	Carers Working Age Client Group
24	Disabled Working Age Client Group
25	Jobseekers Allowance Claimant Rate
26	Fuel Poverty
27	Health-Related Behaviour Estimates
28	Mental Ill Health Estimates
29	Access to Psychological Therapies
30	Use of Health Services
31	Emergency Admissions
32	Elective Admissions
33	Urgent Care Attendances
34	Accidental Falls Admissions
35	Alcohol-Related Admissions
36	Killed Or Seriously Injured On Roads
37	Life Expectancy at Birth
38	Life Expectancy at Age 65
39	Learning Disability Accommodation
40	Permanent Admissions to Care Homes
41	Outcome of Short-Term Support
42	Sources and Definitions

JSNA Profiles Home Page: [www.devonhealthandwellbeing.org.uk/jsna/profiles](http://www.devonhealthandwellbeing.org.uk/jsna/profiles)

'Better Together' Community Performance summaries for Devon towns:  
<https://new.devon.gov.uk/factsandfigures/performance/community-performance/>

# INDICATOR SUMMARY

This summary displays all the main measures within the JSNA profile, showing the value for the area compared with the local authority district and Devon as a whole. A statistical significance column is also included which identifies if the area is significantly higher (orange shading), significantly lower (blue shading), or not significantly different (grey shading) than the Devon figure.

Measure	Area	Sig*	District	Devon	Chart	Trend
Total Population	1650	N/A	-	-	-	
0-15 Population	19.9%	Orange	17.0%	16.3%		
16-64 Population	54.7%	Blue	58.4%	59.2%		
65-84 Population	20.7%	Grey	21.2%	21.0%		
85+ Population	4.7%	Orange	3.4%	3.6%		
IMD 2015 Score	23.64	N/A	20.68	17.09		
Income Deprivation	16.4%	Orange	12.2%	10.8%		
Employment Deprivation	14.0%	Orange	10.5%	9.5%		
Birth Rate	82.3	Orange	64.5	58.5		
Early Help DAF Assessments	4.2%	Orange	1.3%	0.8%		-
Children in Need	4.2%	Grey	2.7%	2.7%		
MASH Enquiries	216.3	Grey	232.0	189.6		
English = Second Language	#	Grey	2.2%	3.9%		
Special Educational Needs	18.7%	Grey	17.7%	17.0%		
Pupils in Well Rated Schools	94.4%	Grey	76.4%	89.2%		
GCSEs: Five or more A*-C	80.0%	Grey	59.5%	64.8%		
NEETS aged 16 to 18	7.4%	Grey	7.2%	7.3%		
Working Age Benefits	15.8%	Orange	10.8%	9.6%		
Benefit Claimants 16 to 24	7.0%	Grey	8.4%	6.3%		
ESA / Incapacity Benefit	7.9%	Orange	5.9%	5.3%		
Benefit Clients: Carers	3.4%	Orange	1.8%	1.5%		
Benefit Clients: Disabled	2.3%	Orange	1.1%	1.1%		
Job Seekers Allowance	1.1%	Grey	0.9%	0.9%		
Fuel Poverty	11.9%	Grey	13.9%	13.0%		
Psychological Therapies	3727.2	Orange	2280.0	2014.1		-
Emergency Admissions	9076.0	Orange	7872.4	7215.3		
Elective Admissions	12712.6	Blue	12741.7	14005.4		
Urgent Care Attendances	25216.5	Blue	28580.7	31899.6		
Accidental Fall Admissions	552.1	Orange	415.9	366.3		
Alcohol-Related Admissions	413.9	Grey	641.7	548.5		
Roads: Killed/Seriously Injured	#	Blue	53.1	45.7		
Life Expectancy at Birth	78.0	Blue	81.5	82.4		
Life Expectancy at Age 65	17.7	Blue	20.3	20.8		
LD Supported Accommodation	#	Grey	77.8%	75.8%		
Care Home Admissions	1193.3	Grey	475.3	448.4		
Effective Short-Term Support	100.0%	Grey	86.1%	87.9%		

\* Statistical Significance vs Devon

# Rate not available (small numbers)

N/A Significance not available / calculable

Orange Significantly higher

Blue Significantly lower

Grey No significant difference

# 2011 CENSUS PROFILE

	Measure	Area n	Area rate	Sig*	District	Devon	SW	England
Socio-Economic Classification	Higher Managerial	43	3.90%		7.27%	9.57%	10.24%	10.41%
	Lower Managerial	167	15.15%		20.64%	21.71%	21.63%	20.92%
	Intermediate Occs	108	9.80%		11.15%	12.14%	12.78%	12.79%
	Small Employers	153	13.88%		16.06%	14.22%	11.29%	9.42%
	Technical Occs	114	10.34%		8.09%	7.07%	7.30%	6.88%
	Semi-Routine Occs	251	22.78%		16.41%	14.80%	14.82%	13.97%
	Routine Occs	165	14.97%		12.06%	10.17%	10.57%	11.00%
	Never worked	41	3.72%		2.96%	2.91%	3.42%	5.61%
	Not Classified	60	5.44%		5.36%	7.40%	7.95%	9.01%
Qualifications and Students	No Qualifications	369	29.22%		24.05%	21.14%	20.70%	22.46%
	Level 1 Quals	222	17.58%		14.42%	13.29%	13.60%	13.29%
	Level 2 Quals	231	18.29%		17.17%	16.45%	16.38%	15.22%
	Apprenticeship	62	4.91%		4.73%	4.16%	4.28%	3.57%
	Level 3 Quals	147	11.64%		12.43%	12.90%	13.19%	12.35%
	Level 4+ Quals	182	14.41%		22.92%	27.76%	27.37%	27.38%
	Other Quals	50	3.96%		4.28%	4.29%	4.47%	5.73%
	FT Students 16-17	33	2.61%		2.54%	2.45%	2.60%	2.71%
	FT Students 18+	27	2.14%		2.16%	3.99%	4.45%	5.46%
Household (HH) Characteristics	Lone Parent HH	90	12.91%		8.88%	8.15%	8.86%	10.61%
	No Car or Van HH	171	24.53%		19.02%	17.38%	25.80%	18.90%
	Shared Dwellings	#	#		0.04%	0.02%	0.03%	0.03%
	No usual resident	26	3.60%		10.23%	7.81%	4.26%	5.97%
	Has second address	37	2.36%		3.99%	5.73%	5.72%	5.17%
	Communal Est Pop	#	#		2.22%	2.50%	2.15%	1.80%
	Overcrowding	50	7.17%		4.85%	4.96%	6.39%	8.74%
	No central heating	15	2.15%		5.24%	5.11%	3.64%	2.69%
	Average HH Size	-	2.2	N/A	2.3	2.3	2.3	2.4
Housing Tenure	Owner Occupied	398	57.10%		68.46%	70.19%	63.34%	67.43%
	Shared Ownership	11	1.58%		0.68%	0.81%	0.79%	0.76%
	Social Rented	153	21.95%		10.79%	11.18%	17.69%	13.31%
	Private Rented	117	16.79%		18.35%	16.29%	16.84%	17.09%
	Living Rent Free	18	2.58%		1.72%	1.53%	1.34%	1.41%
Ethnicity	White British	1528	97.45%		95.91%	94.93%	91.81%	79.75%
	White Other	20	1.28%		2.04%	2.61%	3.61%	5.66%
	Mixed	10	0.64%		0.84%	0.87%	1.36%	2.25%
	Asian	8	0.51%		0.89%	1.17%	2.00%	7.82%
	Black	#	#		0.17%	0.19%	0.94%	3.48%
Health	Other Ethnic Group	#	#		0.16%	0.23%	0.30%	1.03%
	Health Bad/V Bad	98	6.25%		5.61%	5.20%	5.15%	5.49%
	Limited	313	19.96%		19.64%	19.45%	18.41%	17.64%
	Limited a Lot	147	9.38%		8.73%	8.55%	8.26%	8.31%
	Limited, 16-64	109	6.95%		7.91%	7.74%	7.87%	8.26%
	Limited a Lot, 16-64	51	3.25%		3.23%	3.16%	3.28%	3.63%
	Provides Care	176	11.22%		11.04%	11.37%	10.78%	10.24%
Provides Care 50hr+	39	2.49%		2.61%	2.48%	2.37%	2.37%	

\* Statistical Significance vs Devon

# Rate not available (small numbers)

N/A Significance not available / calculable

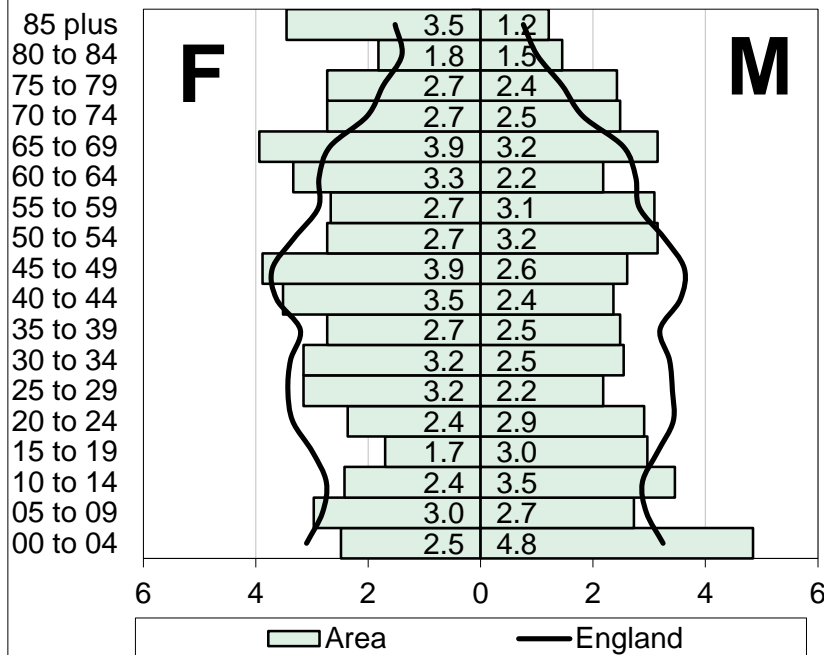
Significantly higher

Significantly lower

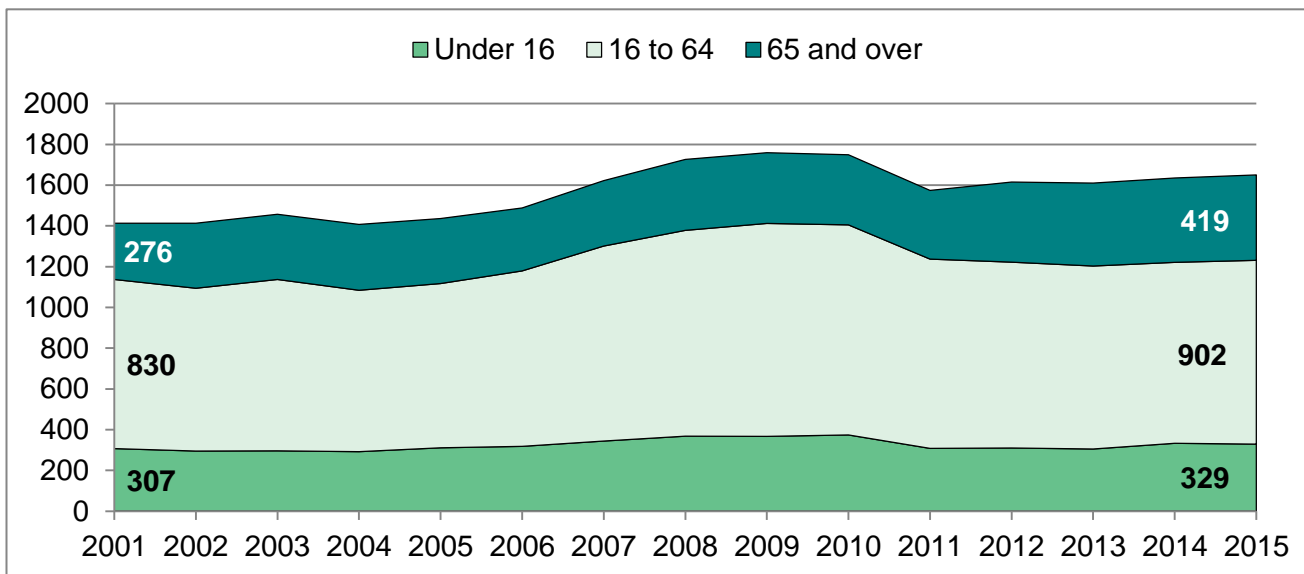
No significant difference

# POPULATION

**POPULATION PYRAMID**  
AREA vs NATIONAL PROFILE, 2015



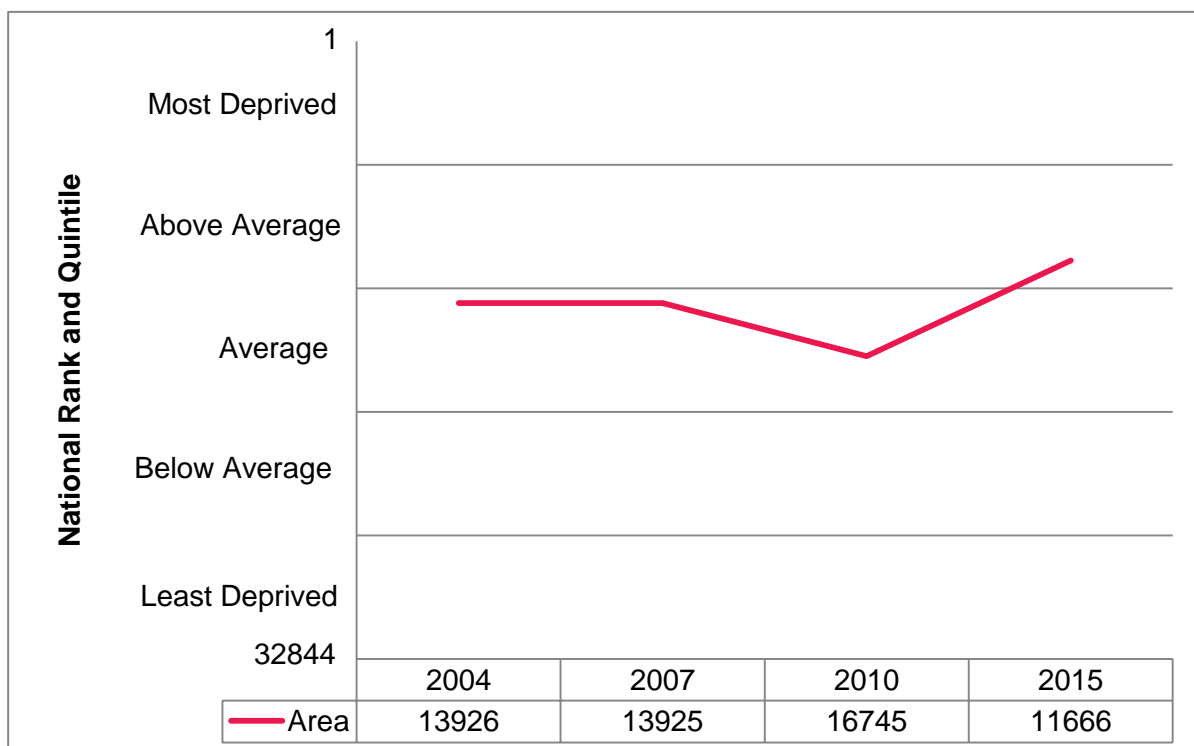
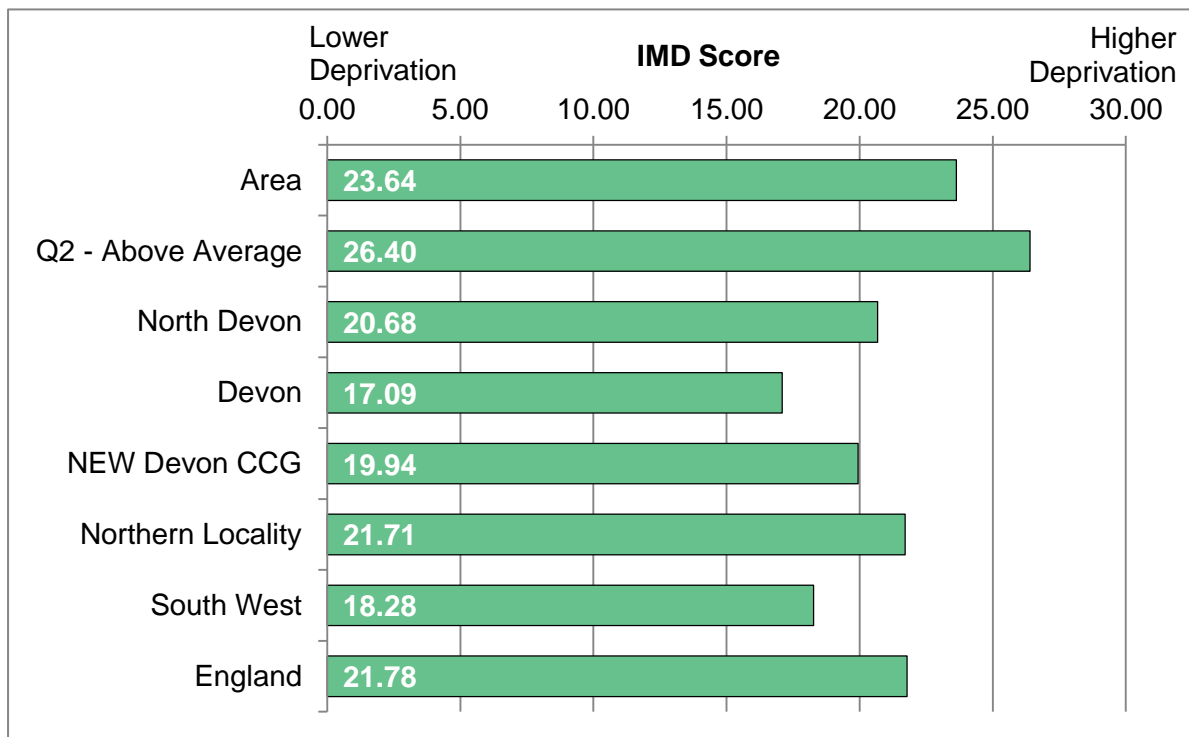
Age	Female	Male
0-4	41	80
5-9	49	45
10-14	40	57
15-19	28	49
20-24	39	48
25-29	52	36
30-34	52	42
35-39	45	41
40-44	58	39
45-49	64	43
50-54	45	52
55-59	44	51
60-64	55	36
65-69	65	52
70-74	45	41
75-79	45	40
80-84	30	24
85+	57	20
<b>Total</b>	<b>854</b>	<b>796</b>



Area	00-15	16-64	65-84	85+	Total
LSOA number	329	902	342	77	1650
Area rate	19.9%	54.7%	20.7%	4.7%	100.0%
Q2 - Above Average	17.1%	61.7%	18.1%	3.1%	100.0%
North Devon	17.0%	58.4%	21.2%	3.4%	100.0%
Devon	16.3%	59.2%	21.0%	3.6%	100.0%
NEW Devon CCG	16.7%	61.1%	19.1%	3.1%	100.0%
Northern Locality	16.8%	58.0%	21.9%	3.3%	100.0%
South West	17.5%	61.4%	18.1%	3.0%	100.0%
England	19.0%	63.5%	15.2%	2.3%	100.0%

# INDEX OF MULTIPLE DEPRIVATION

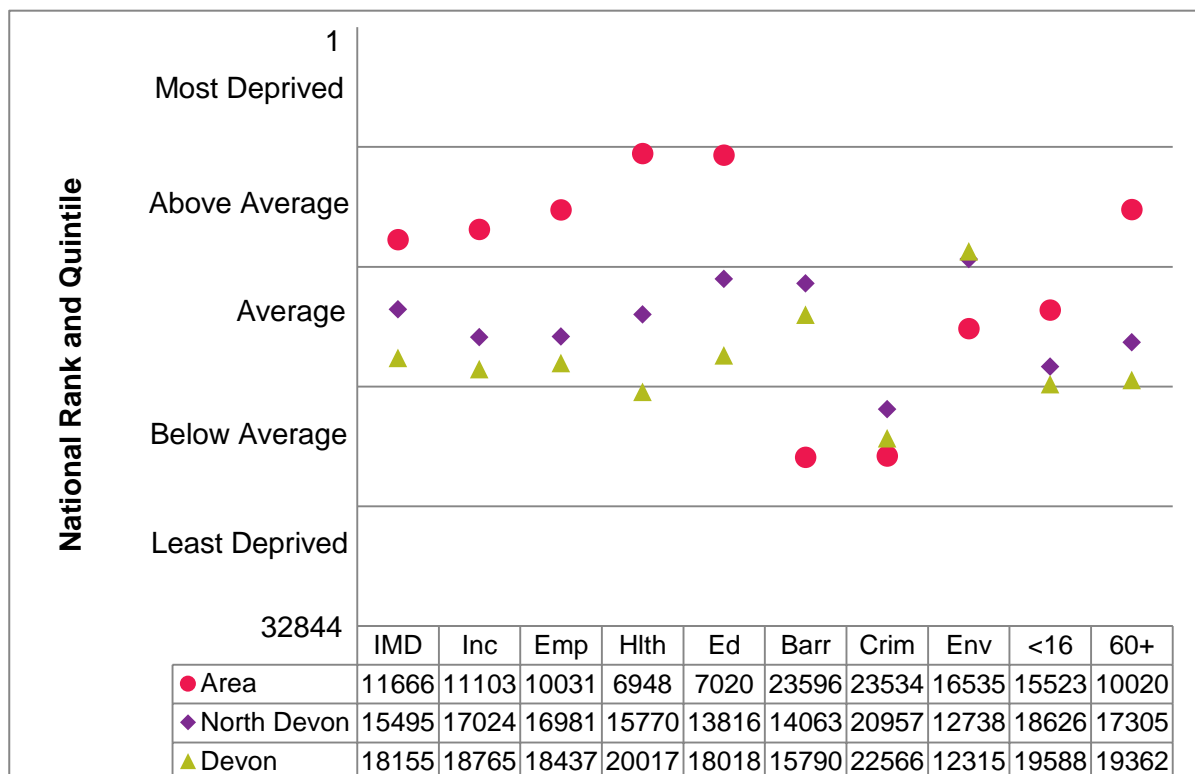
The English Indices of Deprivation measures relative levels of deprivation in small areas of England called Lower Super Output Areas (LSOAs). The overall measure is called the Index of Multiple Deprivation (IMD). This produces an IMD score (bar chart below showing score in 2015) and a national rank out of 32844 LSOAs (trend in national rank shown in line chart below). Deprivation and health are closely connected, with areas with higher levels of deprivation tending to experience poorer health outcomes. Reducing social inequalities in health is a major focus of the work of Health and Wellbeing Boards.



# INDICES OF DEPRIVATION DOMAINS

The Indices of Deprivation are comprised of an overall Index of Multiple Deprivation (IMD); seven domains which contribute to the overall index covering income, employment, health, education, barriers to housing and services, crime and living environment; and two supplementary indices relating to income deprivation in children (under 16) & older people (60+).

The following chart compares the area's national rank on the IMD, seven domains and two supplementary indices in 2015, with the average ranks for their local authority district and Devon as a whole. The value axis ranges from the most deprived LSOA in the country (1) to the least deprived LSOA in the country (32844) on a given measure, and the chart is further divided into five sections highlighting the national deprivation group (quintile).



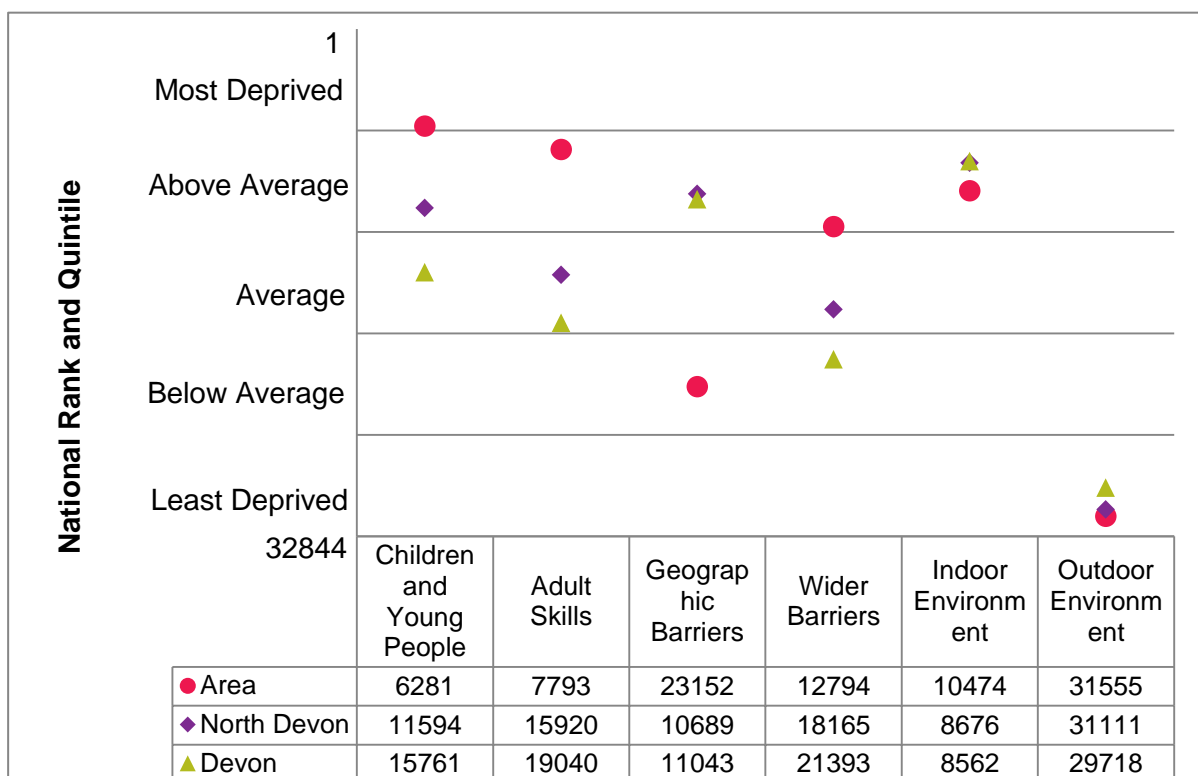
## Indices of Deprivation Domain Descriptions

Key	Domain
IMD	Index of Multiple Deprivation.
Inc	Income Domain. Persons dependent on state benefits and tax credits.
Emp	Employment Domain. Persons involuntarily excluded from the labour market.
Hlth	Health Domain. Covers mental health, admissions, illness & premature death.
Ed	Education Domain. Measures educational attainment and participation.
Barr	Barriers to Housing and Services Domain. Covers affordability and distance.
Crim	Crime Domain. Levels of violence, burglary, theft and criminal damage.
Env	Living Environment Domain. Quality of indoor and outdoor environment.
<16	Income Deprivation Affecting Children Index (IDACI). See income.
60+	Income Deprivation Affecting Older People Index (IDAOP). See income.

# INDICES OF DEPRIVATION SUB-DOMAINS

Certain domains of the Indices of Deprivation include further sub-domains. The education, skills and training domain includes a children and young people sub-domain, and an adult skills sub-domain. The barriers to housing and services domain includes a geographic barriers sub-domain, and a wider barriers sub-domain. The living environment domain includes an indoor environment (housing conditions) sub-domain, and an outdoor environment sub-domain.

The following chart compares the area's national rank on these six sub-domains in 2015, with the average ranks for their local authority district and Devon as a whole. The value axis ranges from the most deprived LSOA in the country (1) to the least deprived LSOA in the country (32844) on a given measure, and the chart is further divided into five sections highlighting the national deprivation group (quintile).



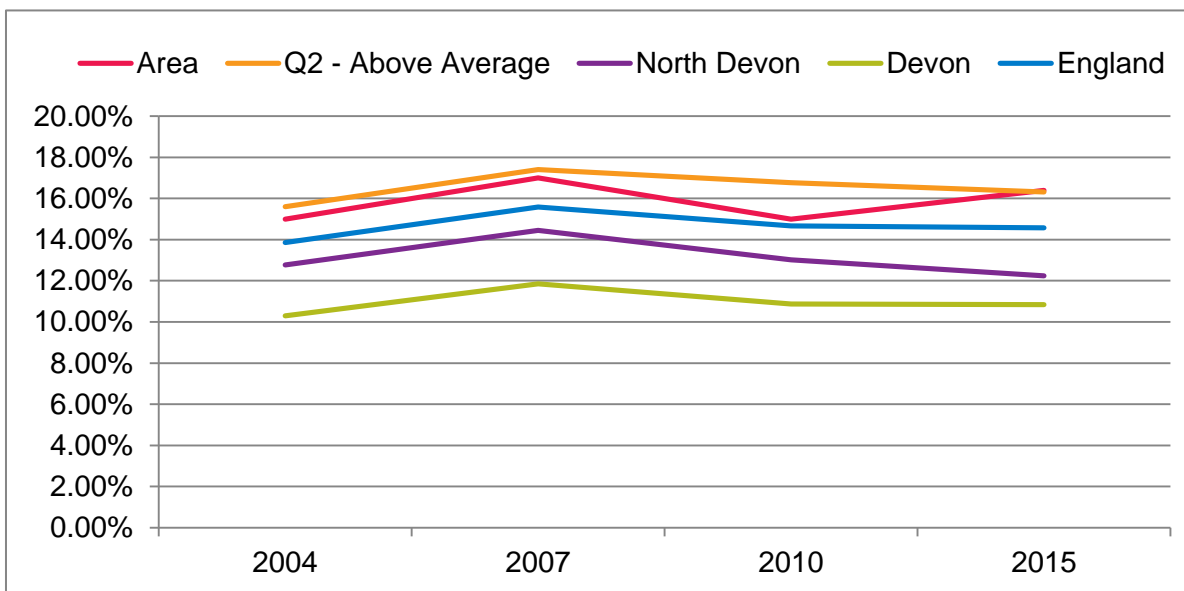
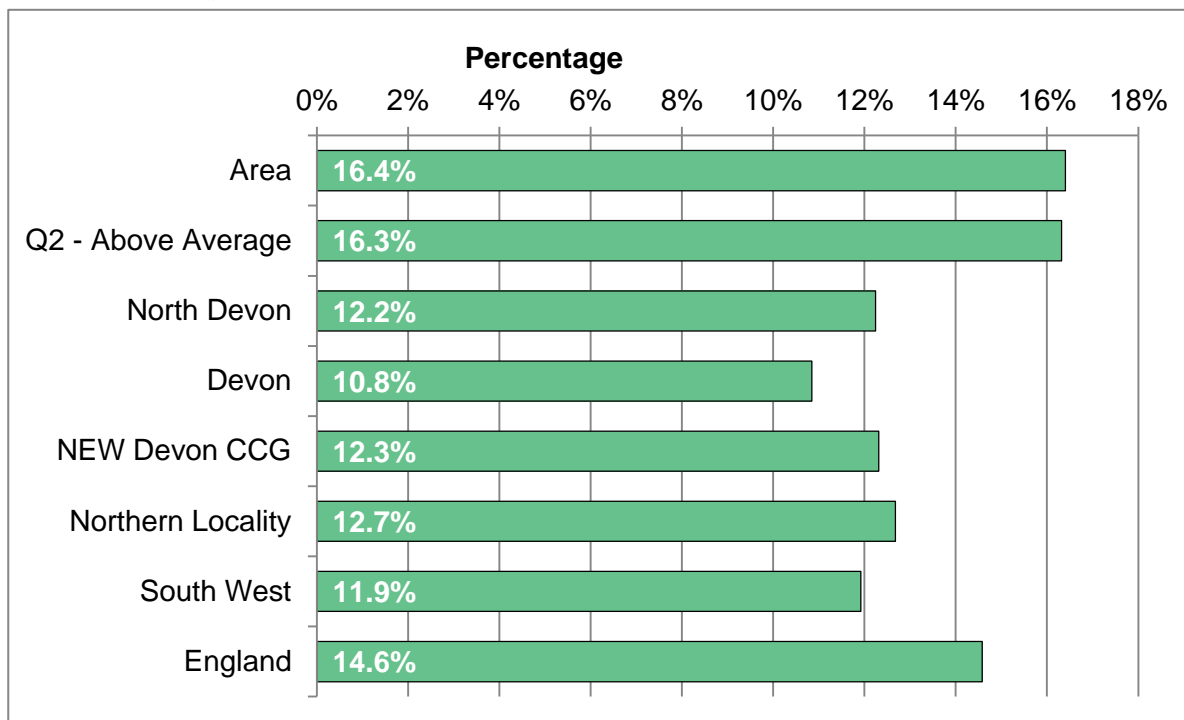
## Indices of Deprivation Domain Descriptions

Sub-Domain	Description
Children and Young People	Education sub-domain covering key stage attainment, school absence, and retention in further and higher education
Adult Skills	Education sub-domain covering the proportion of adults with no or low qualifications and English language proficiency
Geographic Barriers	Barriers sub-domain covering road distance to a post office, primary school, general store/supermarket or GP surgery
Wider Barriers	Barriers sub-domain covering household overcrowding, homelessness acceptances and housing affordability
Indoor Environment	Covers central heating availability and poor housing conditions
Outdoor Environment	Covers air quality and pedestrian and cyclist traffic accidents



# INCOME DEPRIVATION

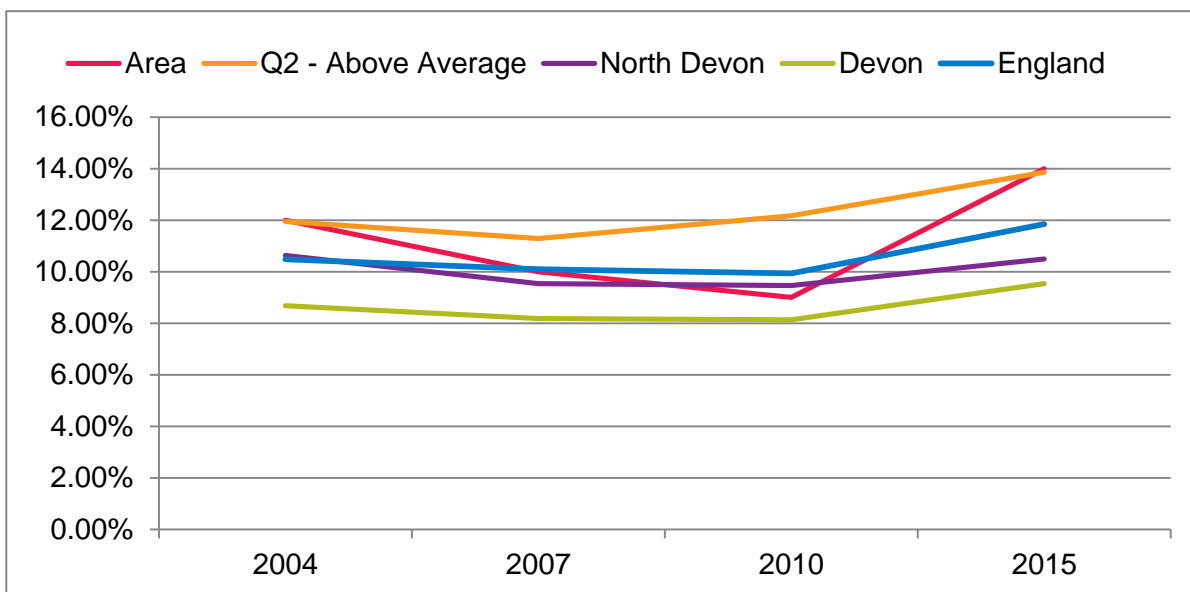
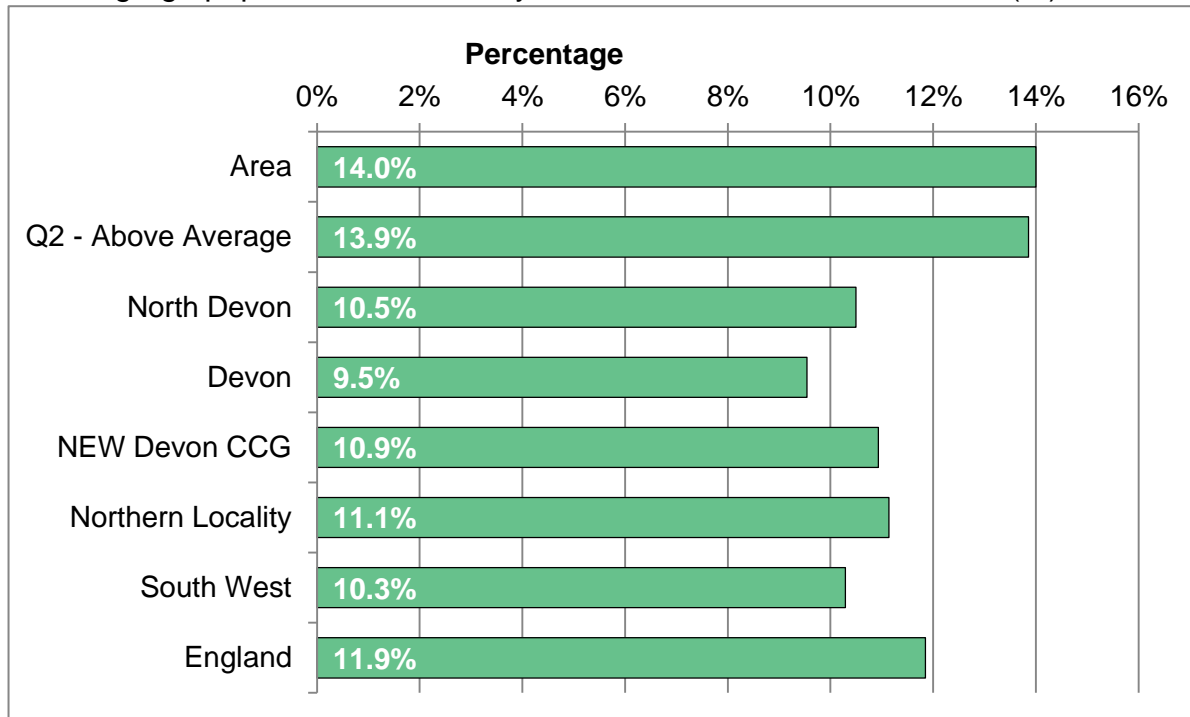
The percentage of the population dependent on benefits or tax credits.



Area	2004	2007	2010	2015
Total per annum	-	-	-	265
Area rate	15.0%	17.0%	15.0%	16.4%
Q2 - Above Average	15.6%	17.4%	16.8%	16.3%
North Devon	12.8%	14.4%	13.0%	12.2%
Devon	10.3%	11.8%	10.9%	10.8%
NEW Devon CCG	11.8%	13.1%	12.1%	12.3%
Northern Locality	12.4%	14.2%	12.9%	12.7%
South West	10.6%	12.3%	11.6%	11.9%
England	13.9%	15.6%	14.7%	14.6%

# EMPLOYMENT DEPRIVATION

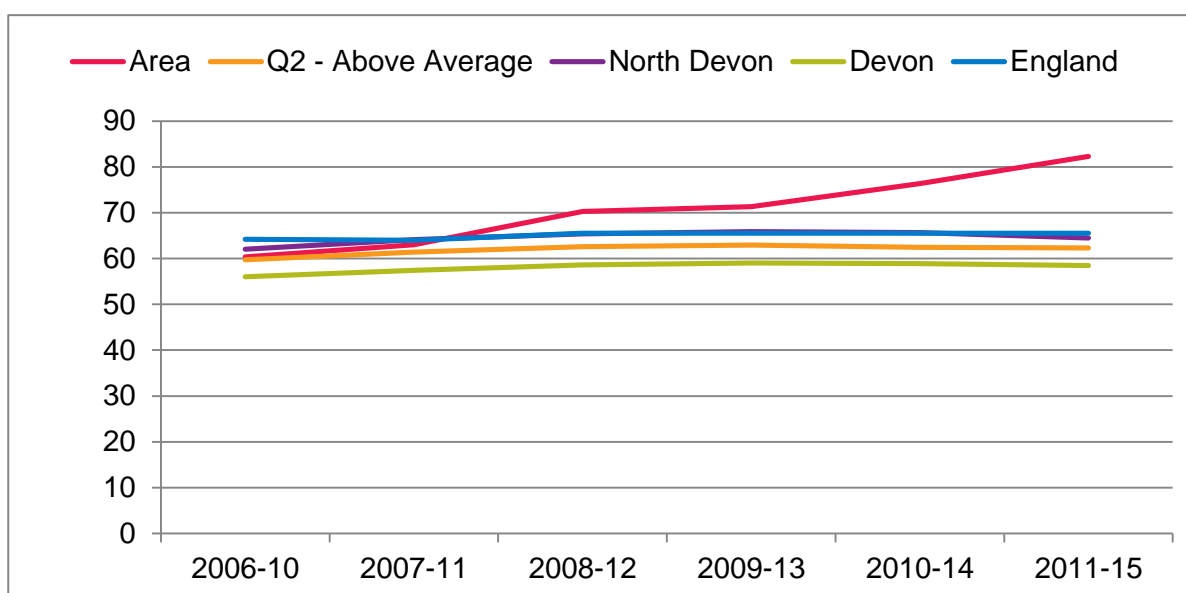
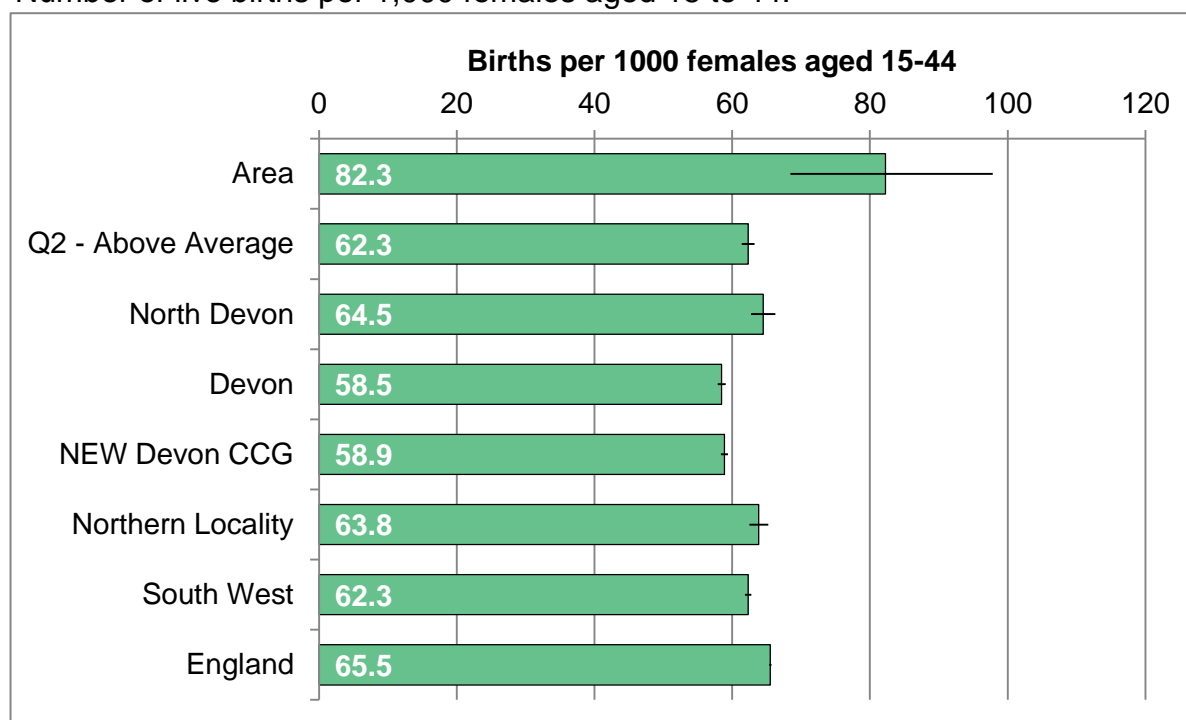
Working-age population involuntarily excluded from the labour market (%).



Area	2004	2007	2010	2015
Total per annum	-	-	-	114
Area rate	12.0%	10.0%	9.0%	14.0%
Q2 - Above Average	11.9%	11.3%	12.2%	13.9%
North Devon	10.6%	9.5%	9.5%	10.5%
Devon	8.7%	8.2%	8.1%	9.5%
NEW Devon CCG	9.7%	9.3%	9.1%	10.9%
Northern Locality	10.7%	9.6%	9.6%	11.1%
South West	8.5%	8.5%	8.5%	10.3%
England	10.5%	10.1%	9.9%	11.9%

# BIRTH RATE

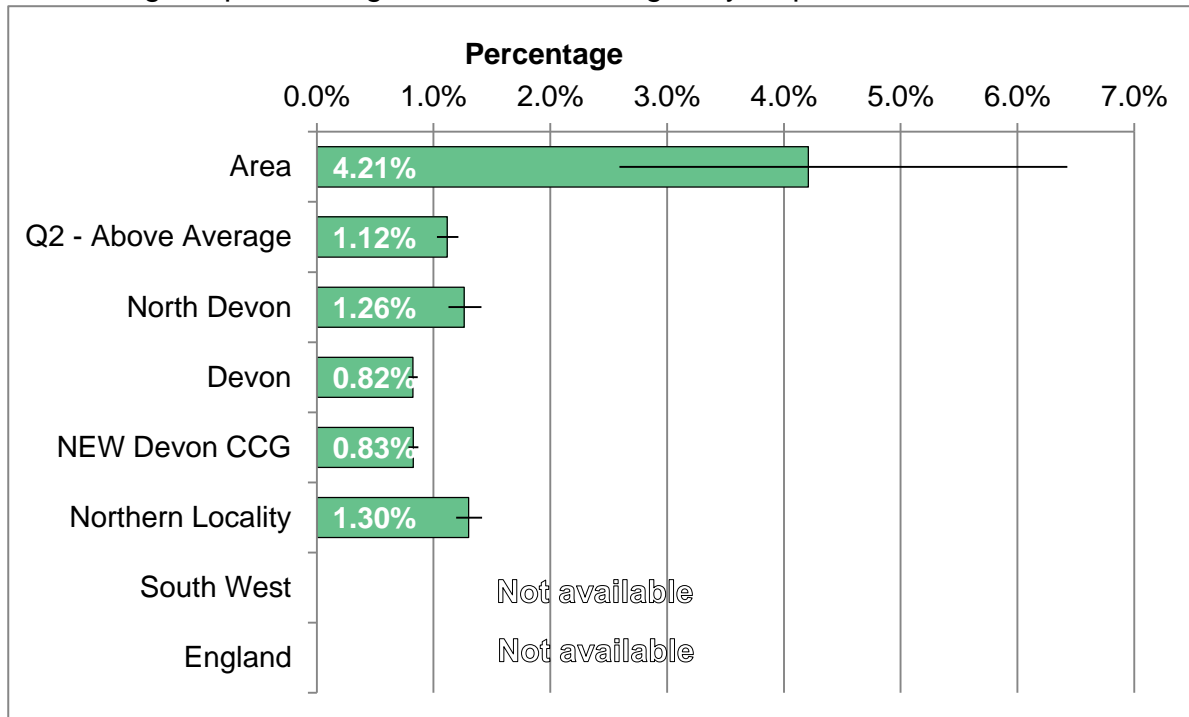
Number of live births per 1,000 females aged 15 to 44.



Area	2006-10	2007-11	2008-12	2009-13	2010-14	2011-15
Births per annum	20	21	23	22	23	23
Area rate	60.3	63.0	70.3	71.3	76.4	82.3
Q2 - Above Average	59.7	61.4	62.6	62.9	62.4	62.3
North Devon	62.1	64.1	65.4	65.9	65.7	64.5
Devon	56.1	57.4	58.6	59.0	58.9	58.5
NEW Devon CCG	57.0	58.4	59.5	59.6	59.4	58.9
Northern Locality	61.1	63.0	64.4	65.0	64.6	63.8
South West	61.0	60.8	62.3	62.3	62.3	62.3
England	64.2	64.0	65.5	65.5	65.5	65.5

# EARLY HELP DAF ASSESSMENTS

Percentage of persons aged 0 to 24 receiving early help DAF assessment



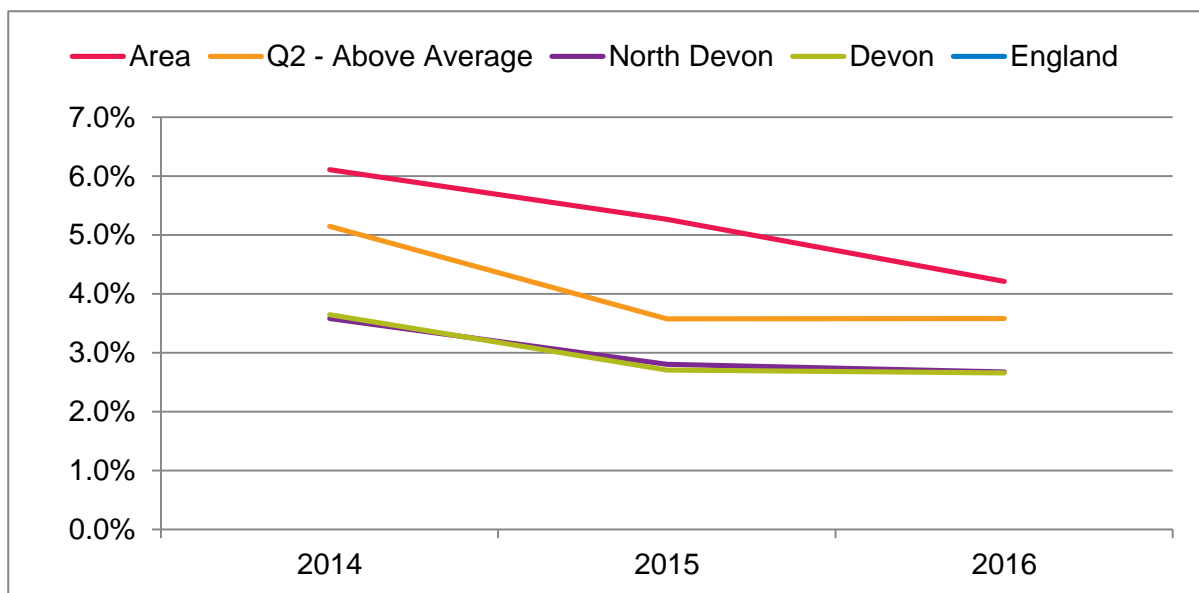
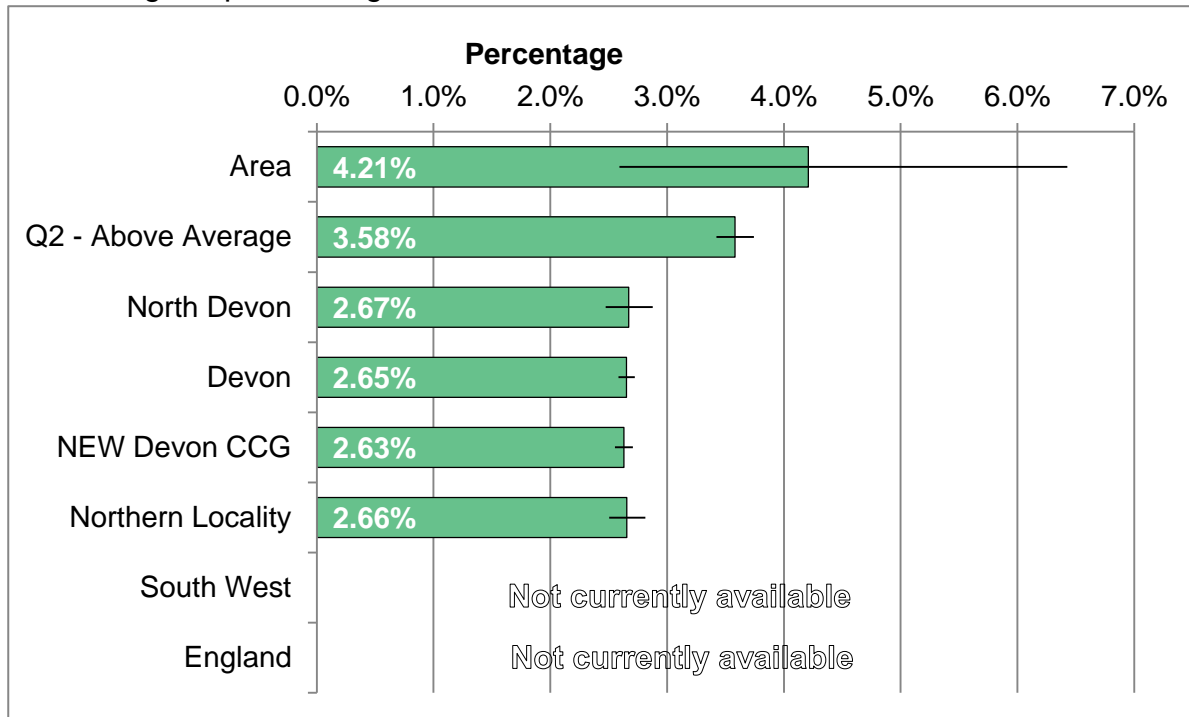
Trend information not currently available

Area	2015
Number per annum	20
Area rate	4.21%
Q2 - Above Average	1.12%
North Devon	1.26%
Devon	0.82%
NEW Devon CCG	0.83%
Northern Locality	1.30%
South West	N/A
England	N/A

CCG figure is Devon County Council component of CCG only

# CHILDREN IN NEED

Percentage of persons aged 0 to 24 who are defined as 'in need' in annual census.

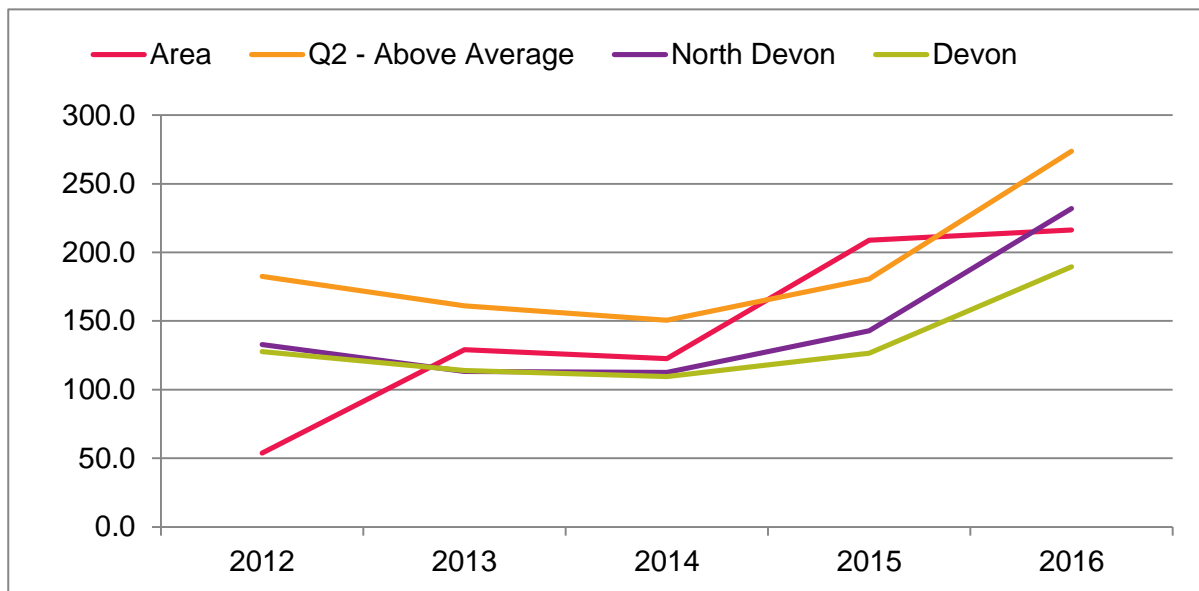
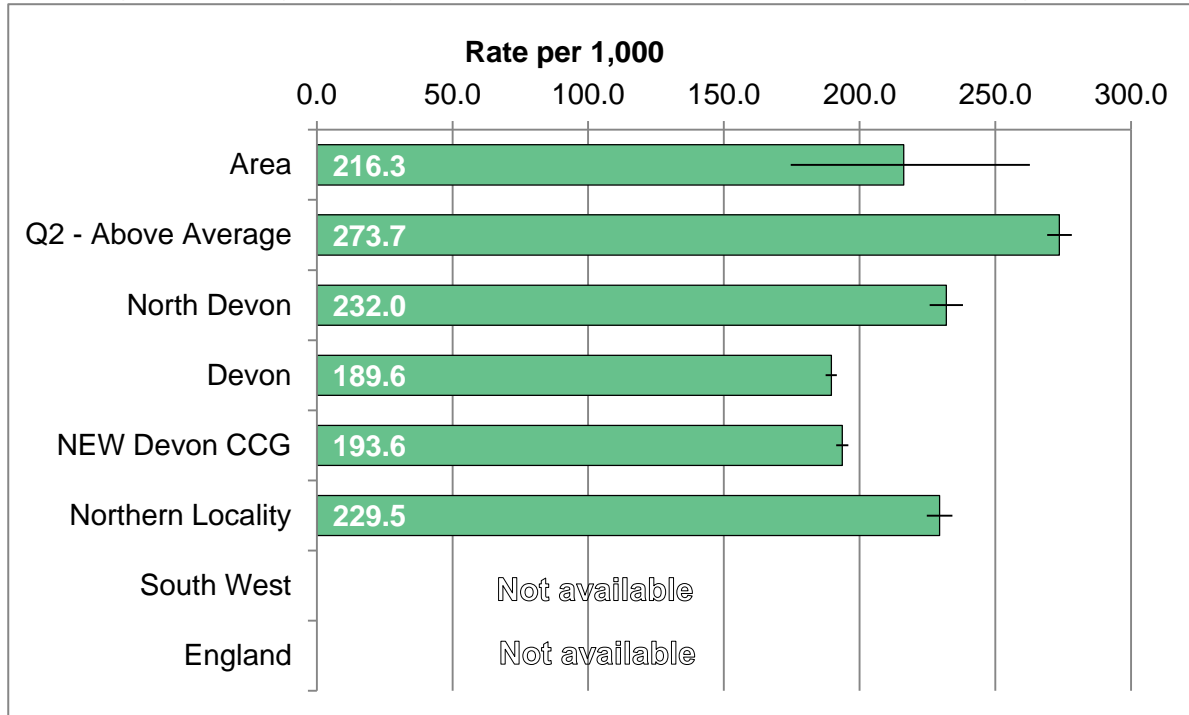


Area	2014	2015	2016
Number per annum	29	25	20
Area rate	6.11%	5.26%	4.21%
Q2 - Above Average	5.15%	3.57%	3.58%
North Devon	3.58%	2.80%	2.67%
Devon	3.65%	2.71%	2.65%
NEW Devon CCG	3.70%	2.70%	2.63%
Northern Locality	3.57%	2.75%	2.66%
South West	N/A	N/A	N/A
England	N/A	N/A	N/A

CCG figure is Devon County Council component of CCG only

# SAFEGUARDING ENQUIRIES (MASH)

Multi-Agency Safeguarding Hub (MASH) enquires per 1,000 persons aged 0-17

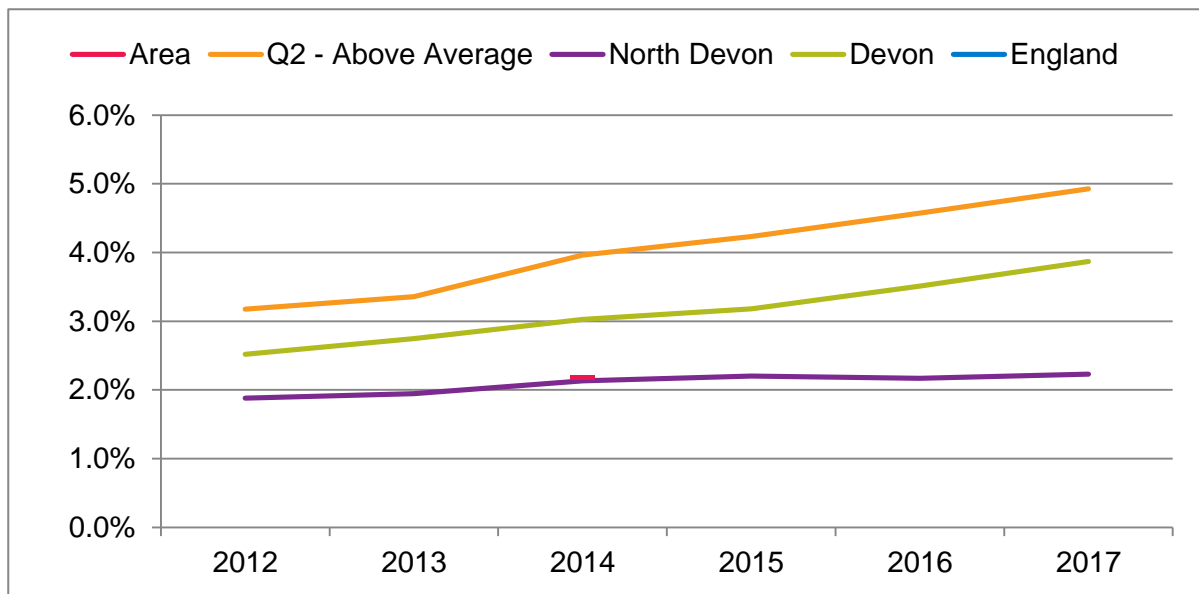
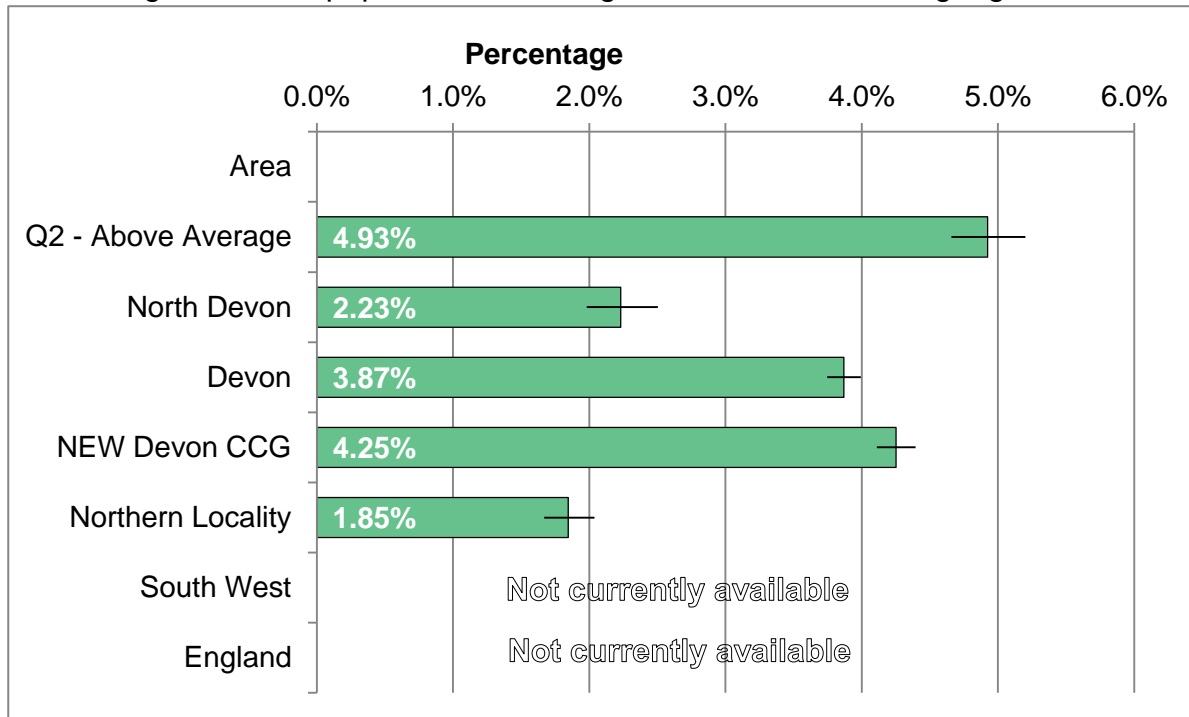


Area	2012	2013	2014	2015	2016
Number per annum	19	44	44	75	77
Area rate	53.8	129.0	122.6	208.9	216.3
Q2 - Above Average	182.6	161.1	150.4	180.6	273.7
North Devon	132.9	113.3	112.5	142.9	232.0
Devon	127.7	114.0	109.6	126.4	189.6
NEW Devon CCG	129.1	111.8	108.7	128.9	193.6
Northern Locality	134.6	115.4	115.6	143.0	229.5
South West	N/A	N/A	N/A	N/A	N/A
England	N/A	N/A	N/A	N/A	N/A

CCG figure is Devon County Council component of CCG only

# ENGLISH AS AN ADDITIONAL LANGUAGE

Percentage of school pupils for whom English is not their first language

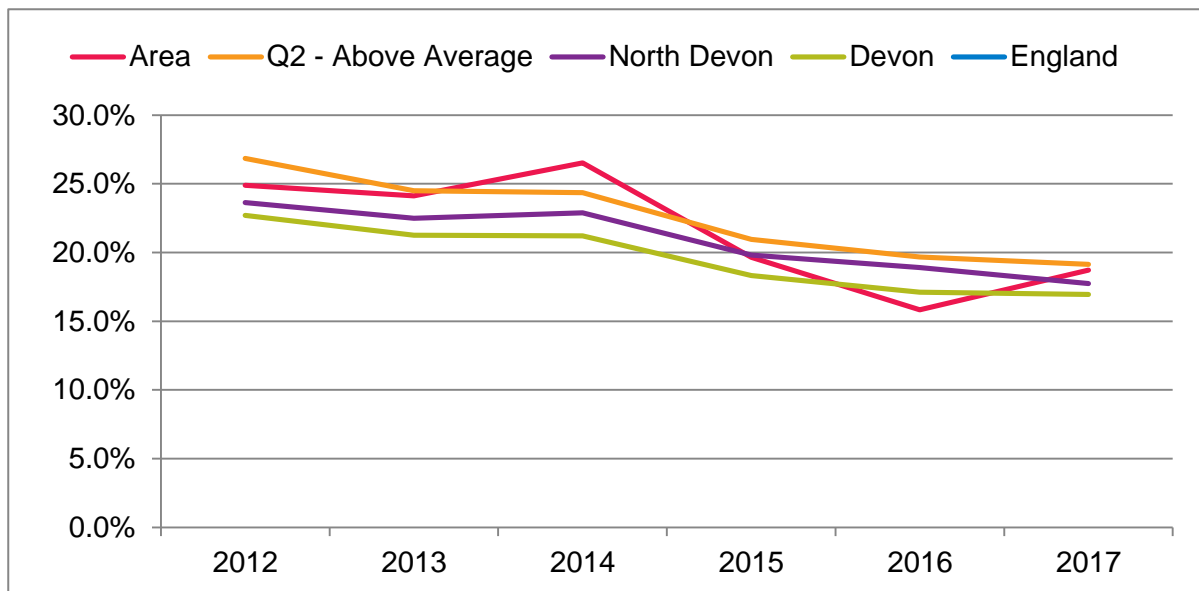
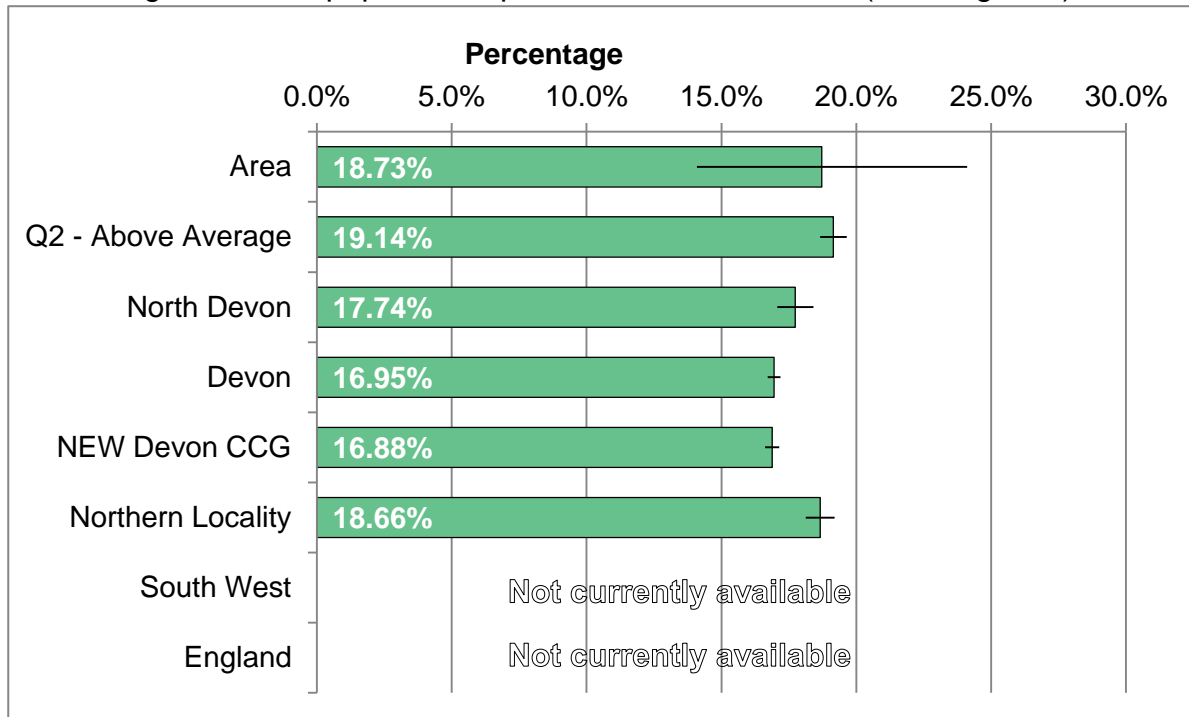


Area	2012	2013	2014	2015	2016	2017
Number per annum	#	#	5	#	#	#
Area rate	#	#	2.17%	#	#	#
Q2 - Above Average	3.18%	3.36%	3.96%	4.23%	4.57%	4.93%
North Devon	1.88%	1.94%	2.13%	2.20%	2.17%	2.23%
Devon	2.52%	2.75%	3.02%	3.18%	3.51%	3.87%
NEW Devon CCG	2.73%	2.99%	3.32%	3.53%	3.88%	4.25%
Northern Locality	1.50%	1.54%	1.74%	1.81%	1.76%	1.85%
South West	N/A	N/A	N/A	N/A	N/A	N/A
England	N/A	N/A	N/A	N/A	N/A	N/A

CCG figure is Devon County Council component of CCG only

# SPECIAL EDUCATIONAL NEEDS

Percentage of school pupils with special educational needs (all categories)



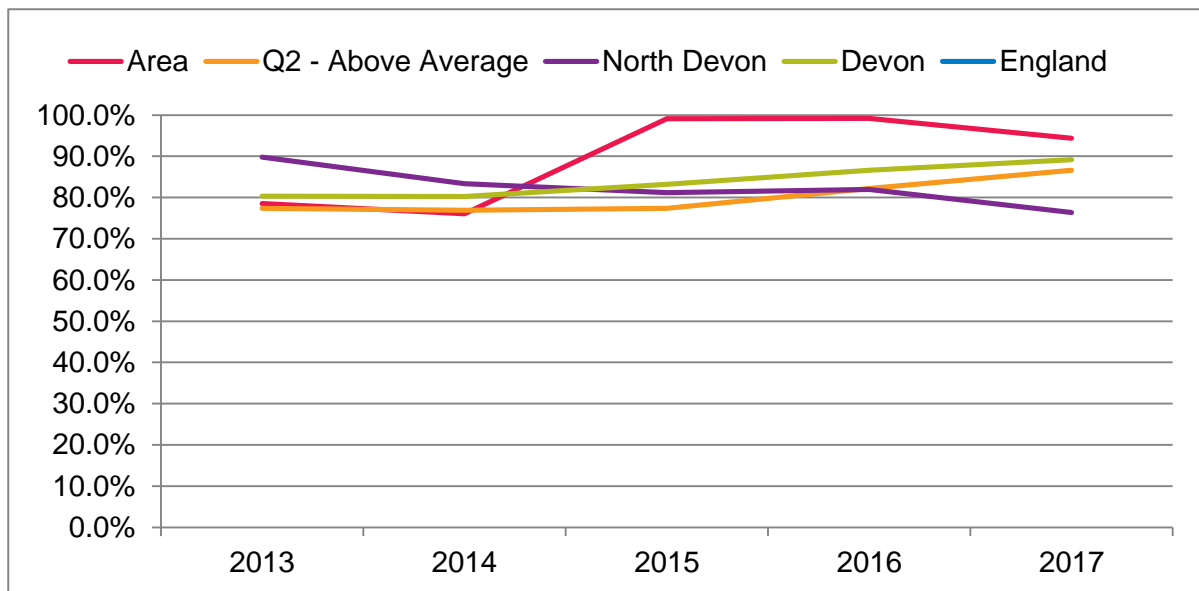
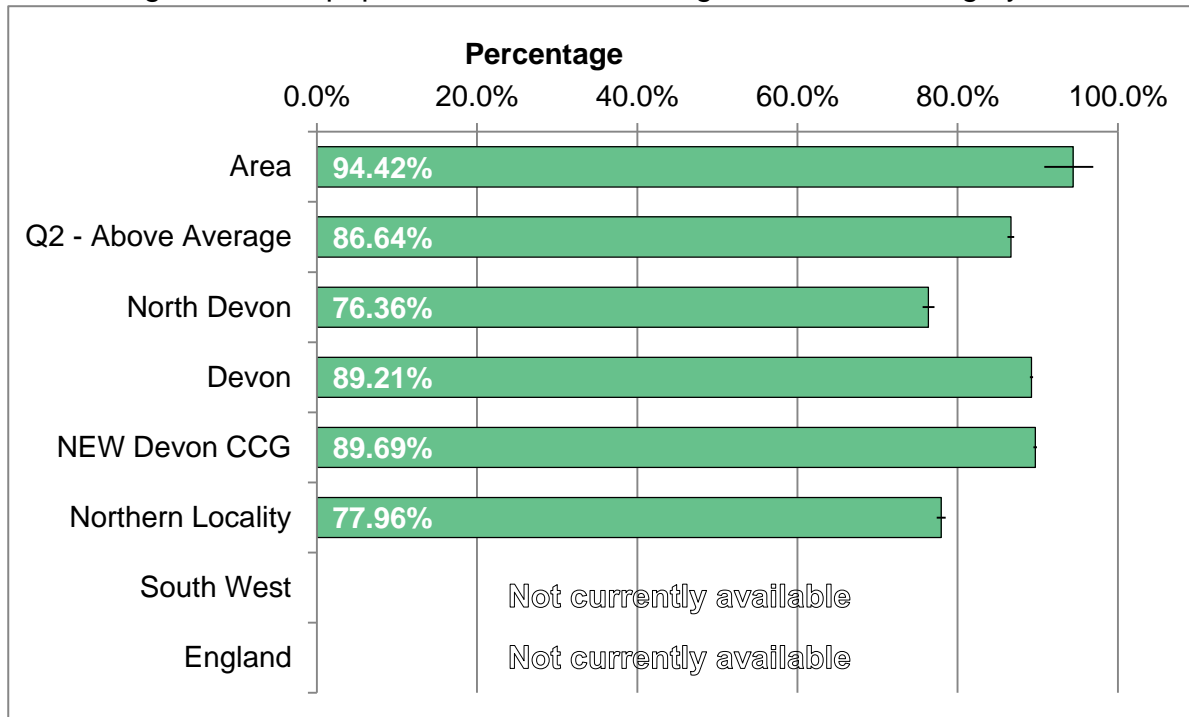
Area	2012	2013	2014	2015	2016	2017
Number per annum	59	55	61	46	38	47
Area rate	24.89%	24.12%	26.52%	19.66%	15.83%	18.73%
Q2 - Above Average	26.85%	24.51%	24.35%	20.96%	19.68%	19.14%
North Devon	23.63%	22.48%	22.88%	19.80%	18.90%	17.74%
Devon	22.70%	21.26%	21.20%	18.31%	17.11%	16.95%
NEW Devon CCG	23.29%	21.48%	21.13%	18.18%	17.21%	16.88%
Northern Locality	23.73%	22.57%	22.64%	20.48%	20.55%	18.66%
South West	N/A	N/A	N/A	N/A	N/A	N/A
England	N/A	N/A	N/A	N/A	N/A	N/A

CCG figure is Devon County Council component of CCG only



# PUPILS IN WELL RATED SCHOOLS

Percentage of school pupils in schools rated as good or outstanding by Ofsted

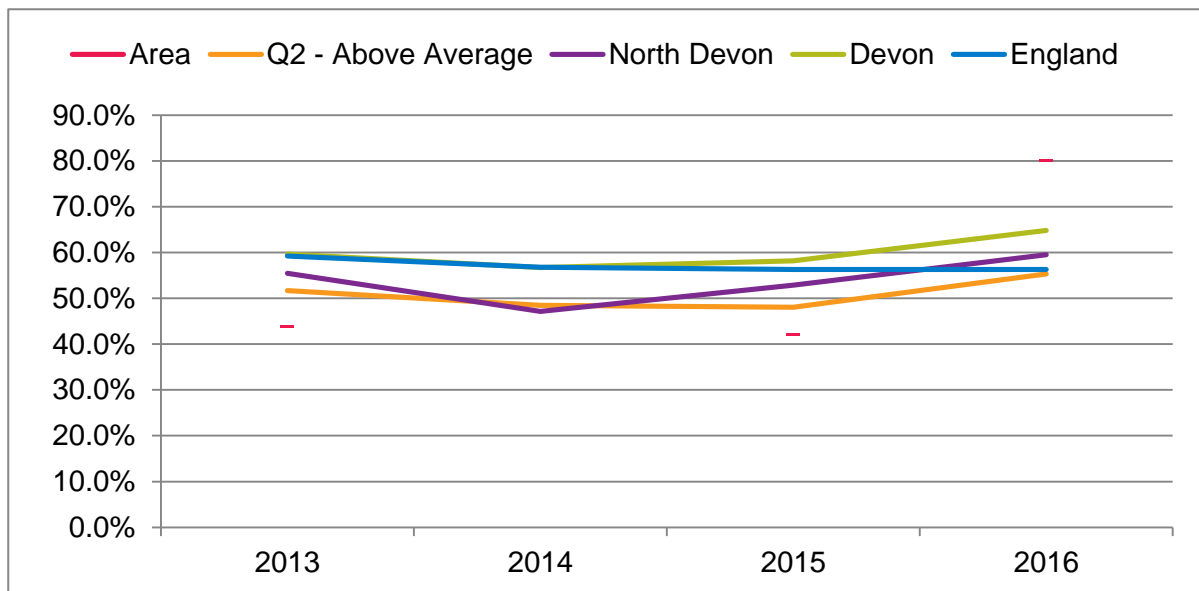
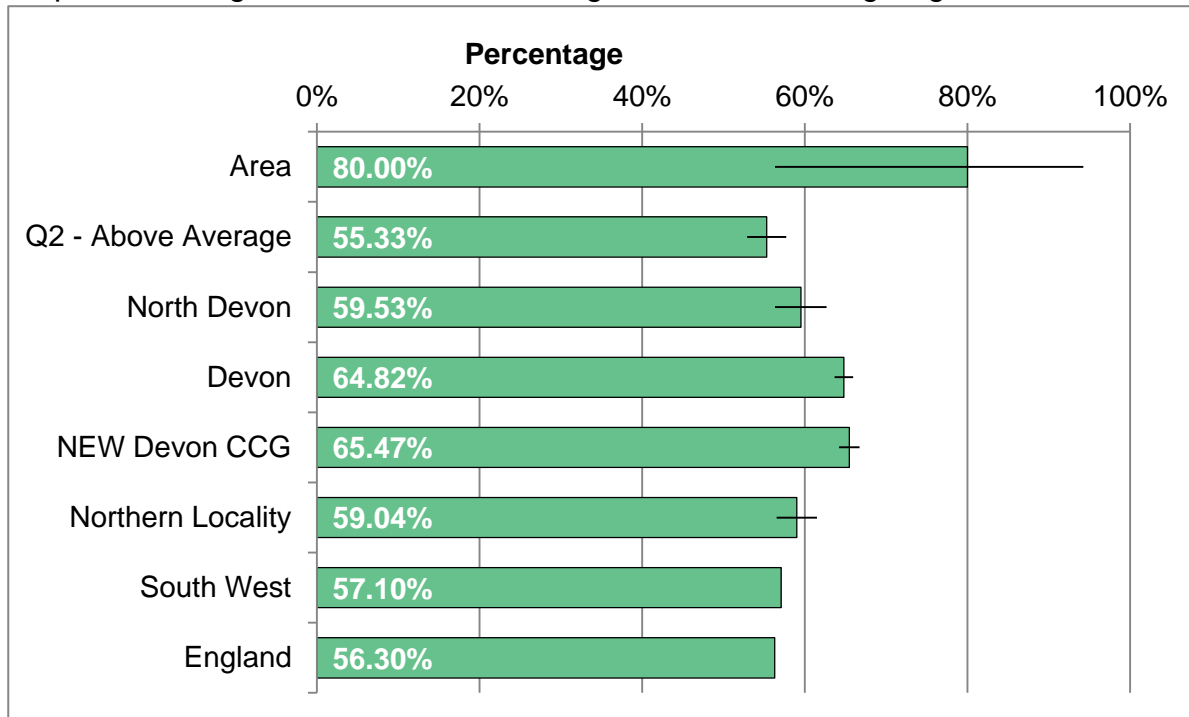


Area	2013	2014	2015	2016	2017
Number per annum	179	175	232	238	237
Area rate	78.51%	76.09%	99.15%	99.17%	94.42%
Q2 - Above Average	77.36%	76.88%	77.41%	82.19%	86.64%
North Devon	89.84%	83.34%	81.17%	81.94%	76.36%
Devon	80.31%	80.26%	83.20%	86.64%	89.21%
NEW Devon CCG	82.11%	80.10%	82.17%	86.64%	89.69%
Northern Locality	78.30%	78.04%	76.42%	79.56%	77.96%
South West	N/A	N/A	N/A	N/A	N/A
England	N/A	N/A	N/A	N/A	N/A

CCG figure is Devon County Council component of CCG only

# GCSE ATTAINMENT: FIVE OR MORE A\*-C

Pupils achieving five or more GCSEs at grade A\*-C including English and Maths

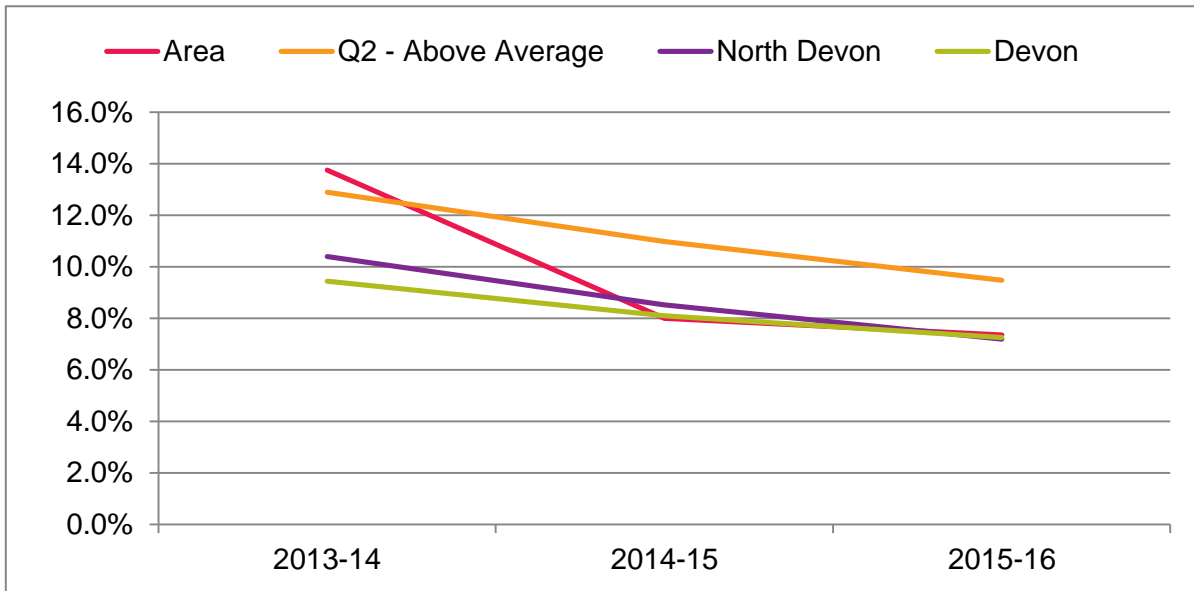
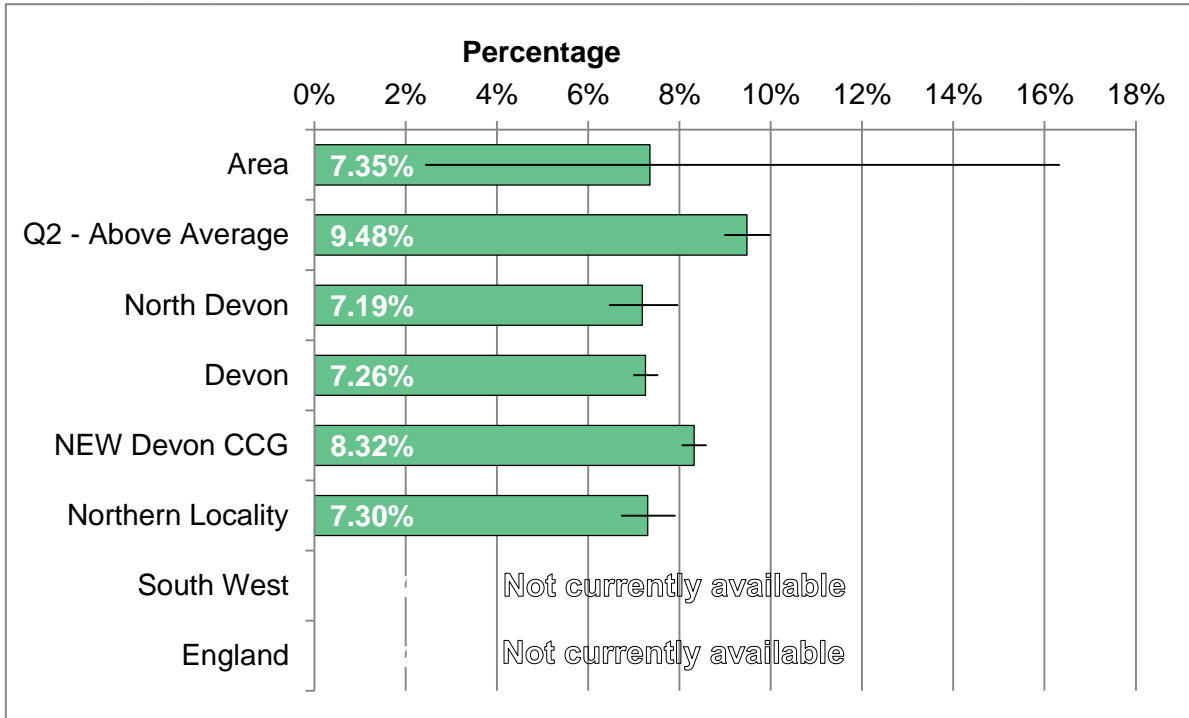


Area	2013	2014	2015	2016
Number per annum	7	#	8	16
Area rate	43.75%	#	42.11%	80.00%
Q2 - Above Average	51.70%	48.50%	48.02%	55.33%
North Devon	55.45%	47.15%	52.91%	59.53%
Devon	59.69%	56.71%	58.21%	64.82%
NEW Devon CCG	60.14%	56.83%	59.12%	65.47%
Northern Locality	53.53%	49.04%	53.89%	59.04%
South West	59.50%	56.70%	57.10%	57.10%
England	59.20%	56.80%	56.30%	56.30%

CCG figure is Devon County Council component of CCG only

# NOT IN EDUCATION, EMPLOYMENT OR TRAINING

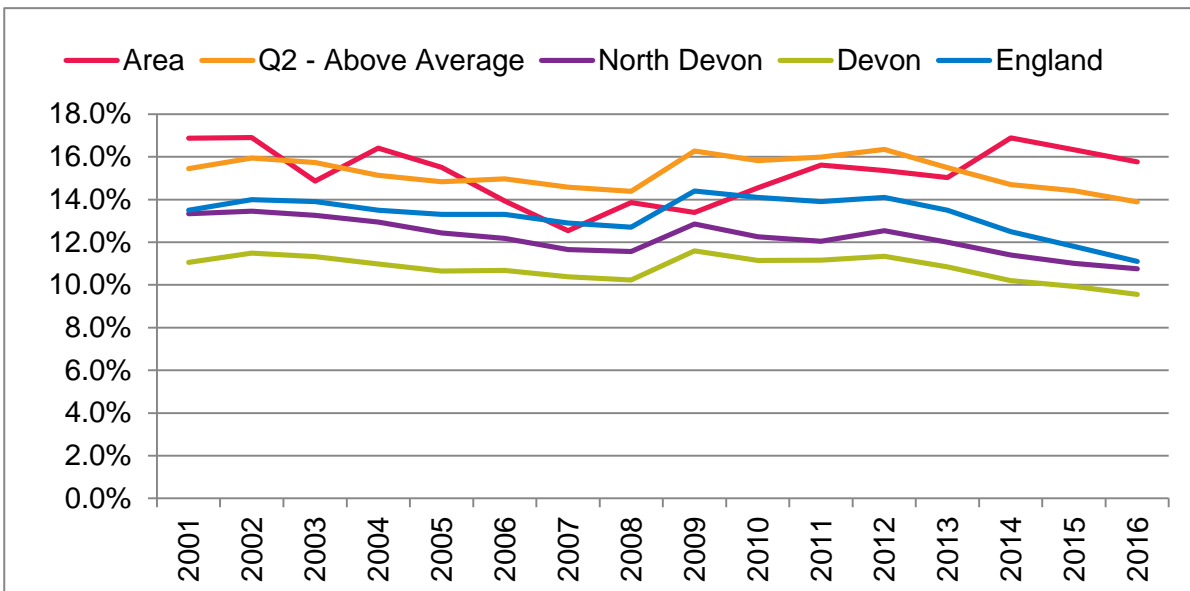
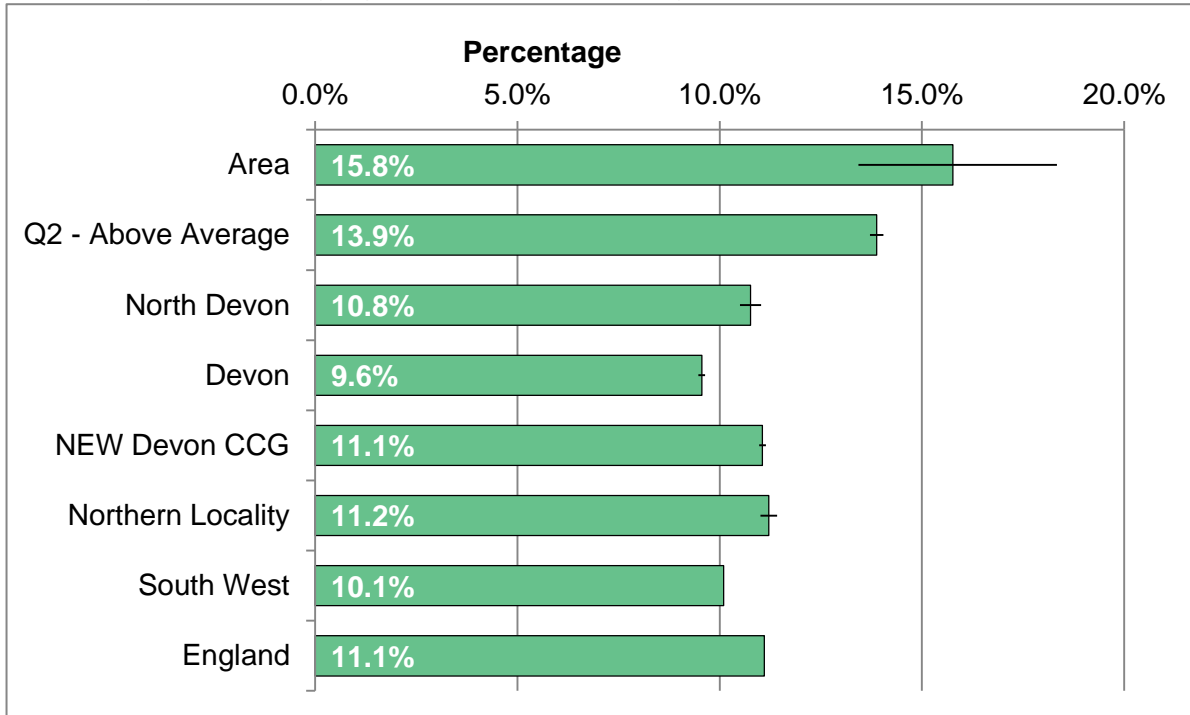
Percentage aged 16-18 not in education, employment or training during year



Area	2013-14	2014-15	2015-16
Number per annum	11	6	5
Area rate	13.75%	8.00%	7.35%
Q2 - Above Average	12.89%	10.97%	9.48%
North Devon	10.40%	8.52%	7.19%
Devon	9.43%	8.10%	7.26%
NEW Devon CCG	10.90%	9.33%	8.32%
Northern Locality	10.51%	8.66%	7.30%
South West	N/A	N/A	N/A
England	N/A	N/A	N/A

# WORKING AGE BENEFIT CLAIMANT RATE

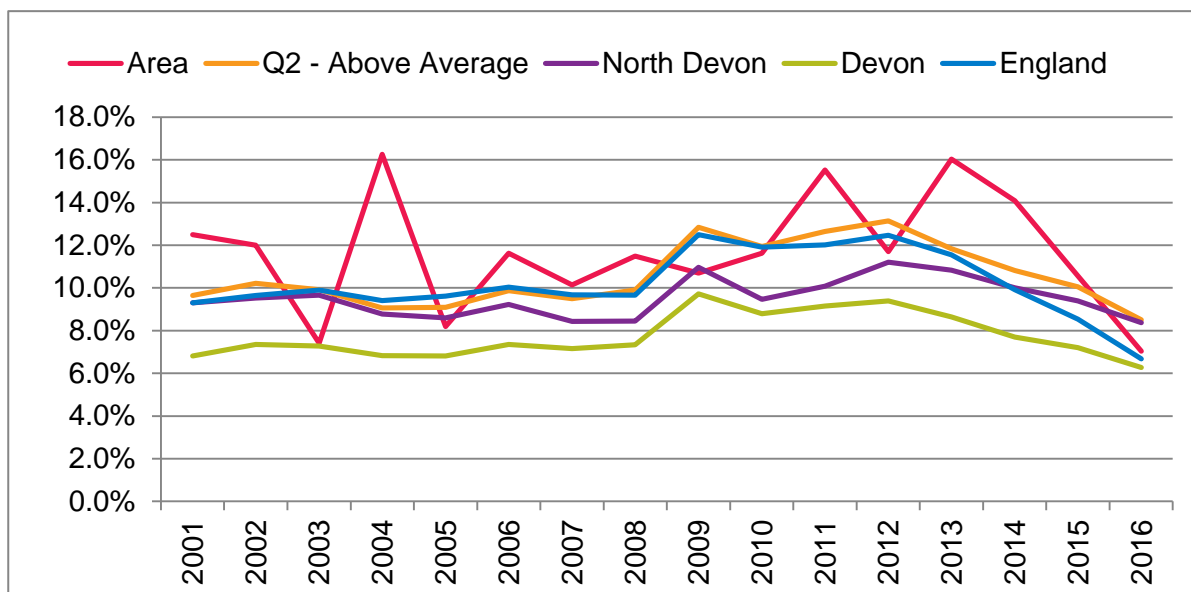
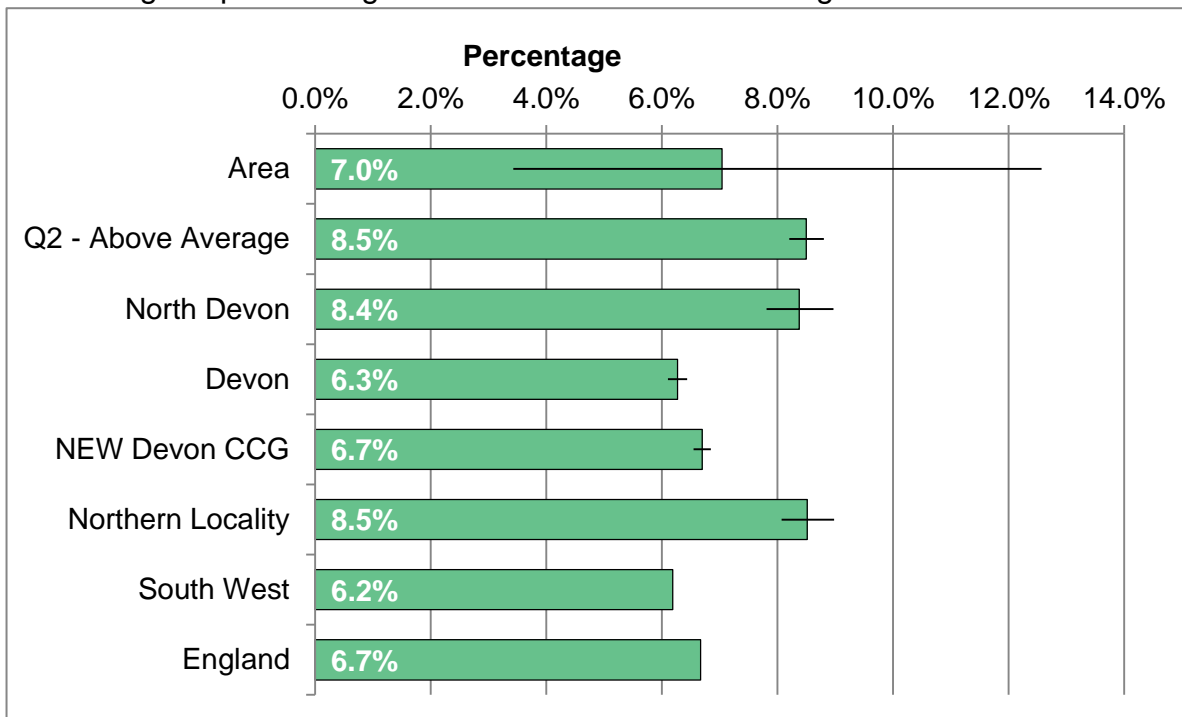
Percentage of working-age population receiving benefits.



Area	2011	2012	2013	2014	2015	2016
Total claimants	145	140	135	150	145	140
Area rate	15.6%	15.4%	15.0%	16.9%	16.3%	15.8%
Q2 - Above Average	16.0%	16.4%	15.5%	14.7%	14.4%	13.9%
North Devon	12.0%	12.5%	12.0%	11.4%	11.0%	10.8%
Devon	11.2%	11.3%	10.8%	10.2%	9.9%	9.6%
NEW Devon CCG	12.9%	13.1%	12.5%	11.7%	11.5%	11.1%
Northern Locality	12.7%	13.1%	12.5%	11.9%	11.5%	11.2%
South West	12.0%	12.2%	11.8%	11.0%	10.6%	10.1%
England	13.9%	14.1%	13.5%	12.5%	11.8%	11.1%

# AGED 16 TO 24 BENEFIT CLAIMANT RATE

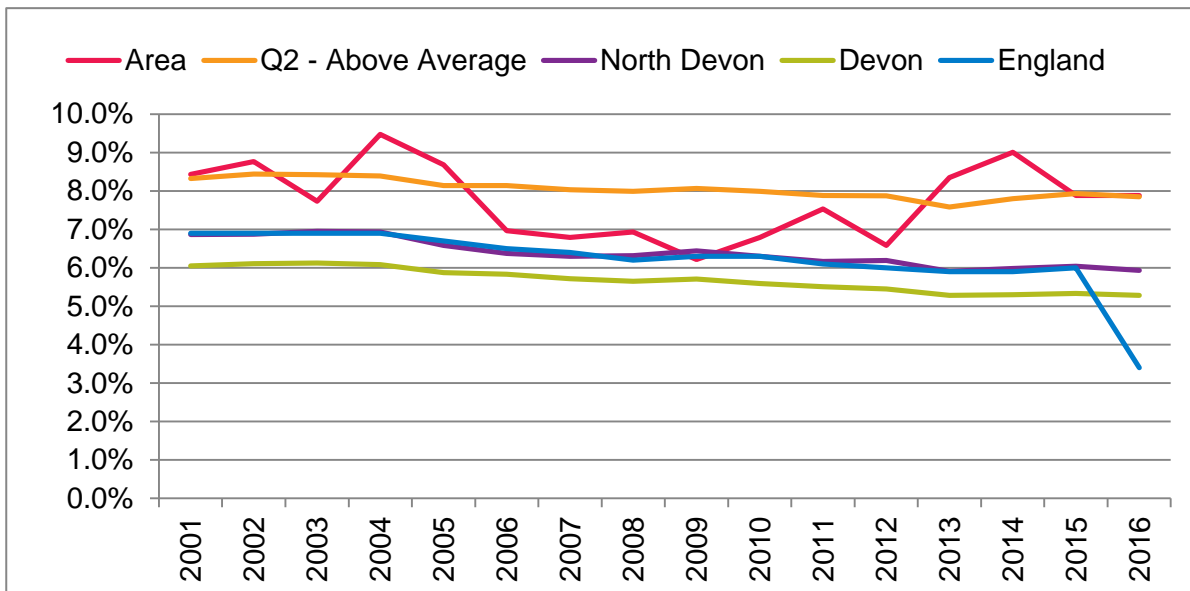
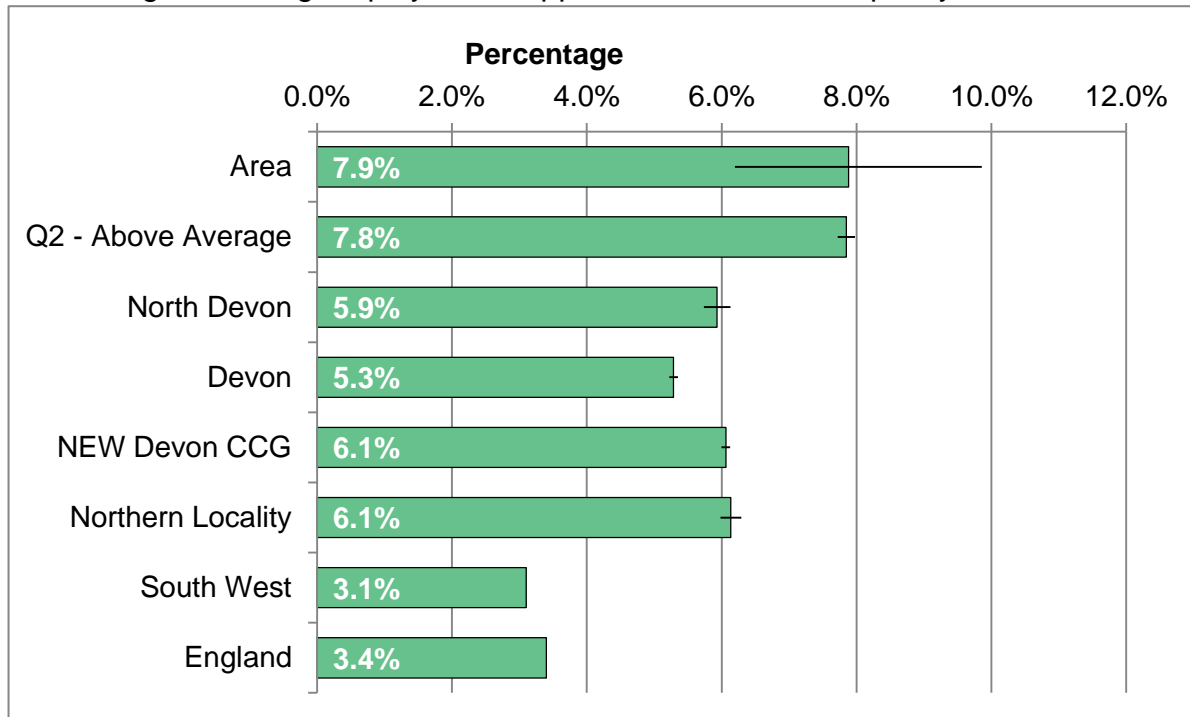
Percentage of persons aged between 16 and 24 receiving benefits.



Area	2011	2012	2013	2014	2015	2016
Total claimants	25	20	25	20	15	10
Area rate	15.5%	11.7%	16.0%	14.1%	10.6%	7.0%
Q2 - Above Average	12.6%	13.1%	11.8%	10.8%	10.0%	8.5%
North Devon	10.1%	11.2%	10.8%	10.0%	9.4%	8.4%
Devon	9.1%	9.4%	8.6%	7.7%	7.2%	6.3%
NEW Devon CCG	10.4%	10.6%	9.6%	8.5%	7.7%	6.7%
Northern Locality	10.9%	12.2%	11.6%	10.5%	9.6%	8.5%
South West	10.0%	10.5%	9.8%	8.6%	7.8%	6.2%
England	12.0%	12.5%	11.6%	9.9%	8.5%	6.7%

# ESA OR INCAPACITY BENEFIT CLAIMANT RATE

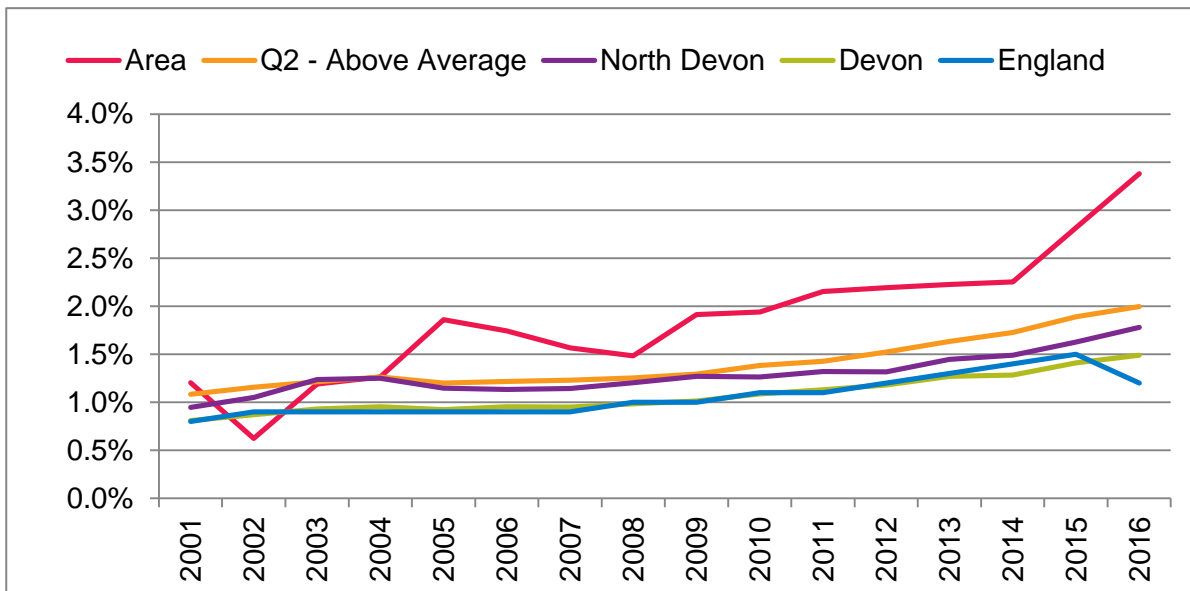
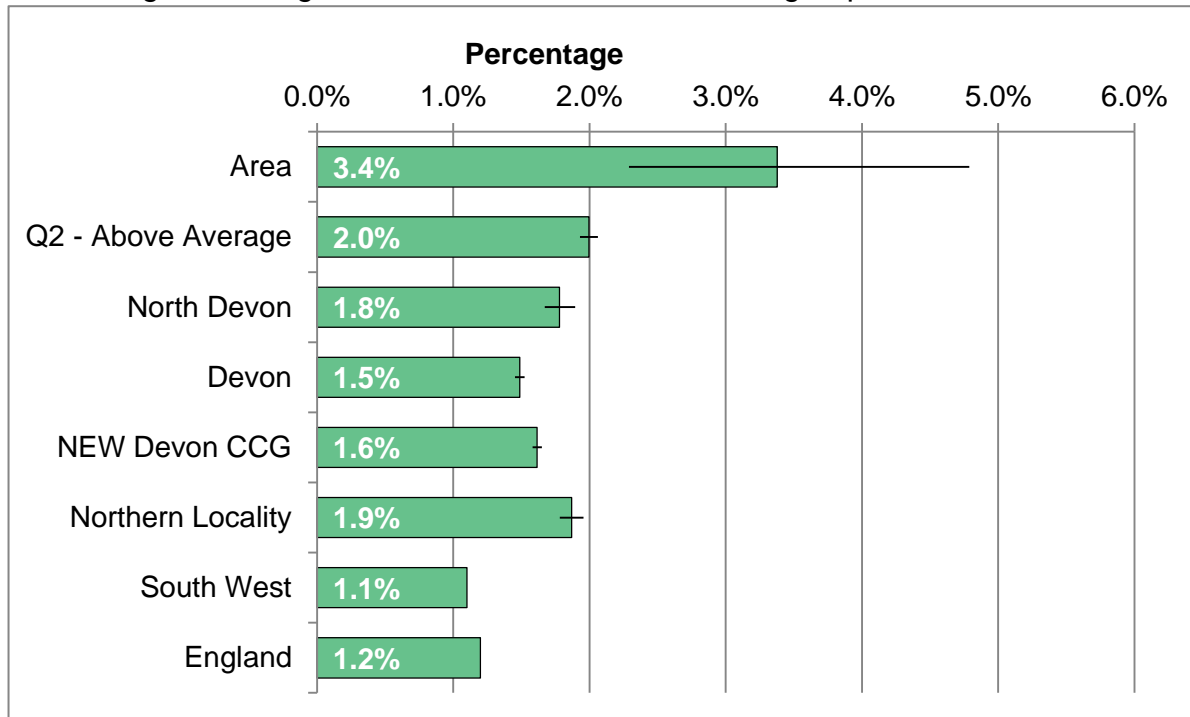
Percentage receiving employment support allowance or incapacity benefit.



Area	2011	2012	2013	2014	2015	2016
Total claimants	70	60	75	80	70	70
Area rate	7.5%	6.6%	8.4%	9.0%	7.9%	7.9%
Q2 - Above Average	7.9%	7.9%	7.6%	7.8%	7.9%	7.8%
North Devon	6.2%	6.2%	5.9%	6.0%	6.0%	5.9%
Devon	5.5%	5.5%	5.3%	5.3%	5.3%	5.3%
NEW Devon CCG	6.3%	6.3%	6.1%	6.1%	6.2%	6.1%
Northern Locality	6.4%	6.4%	6.1%	6.1%	6.1%	6.1%
South West	5.8%	5.7%	5.6%	5.6%	5.7%	3.1%
England	6.1%	6.0%	5.9%	5.9%	6.0%	3.4%

# CARERS WORKING AGE CLIENT GROUP

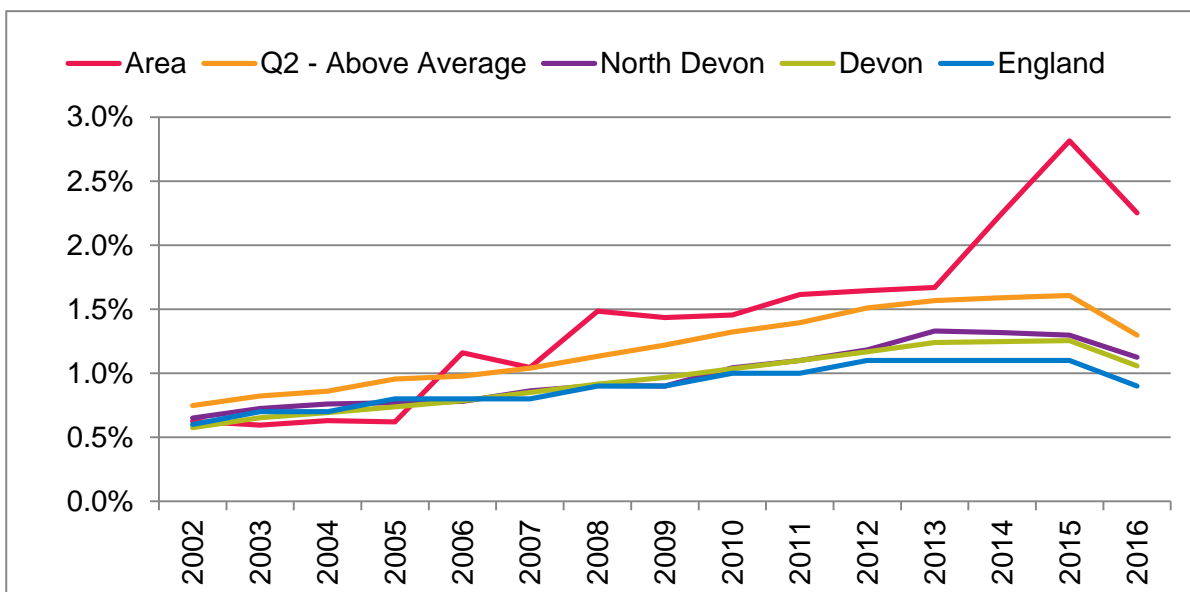
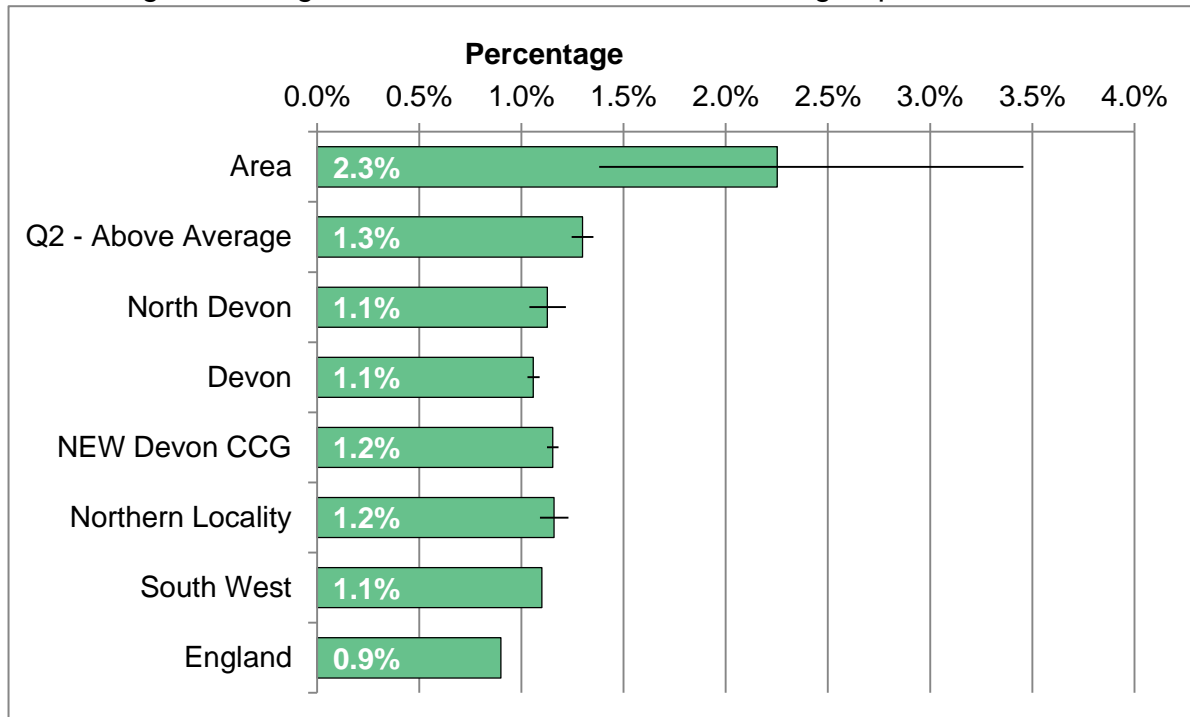
Percentage receiving benefits who are in carers client group.



Area	2011	2012	2013	2014	2015	2016
Total claimants	20	20	20	20	25	30
Area rate	2.2%	2.2%	2.2%	2.3%	2.8%	3.4%
Q2 - Above Average	1.4%	1.5%	1.6%	1.7%	1.9%	2.0%
North Devon	1.3%	1.3%	1.4%	1.5%	1.6%	1.8%
Devon	1.1%	1.2%	1.3%	1.3%	1.4%	1.5%
NEW Devon CCG	1.2%	1.3%	1.4%	1.4%	1.5%	1.6%
Northern Locality	1.4%	1.4%	1.5%	1.5%	1.7%	1.9%
South West	1.0%	1.1%	1.2%	1.2%	1.3%	1.1%
England	1.1%	1.2%	1.3%	1.4%	1.5%	1.2%

# DISABLED WORKING AGE CLIENT GROUP

Percentage receiving benefits who are in disabled client group.

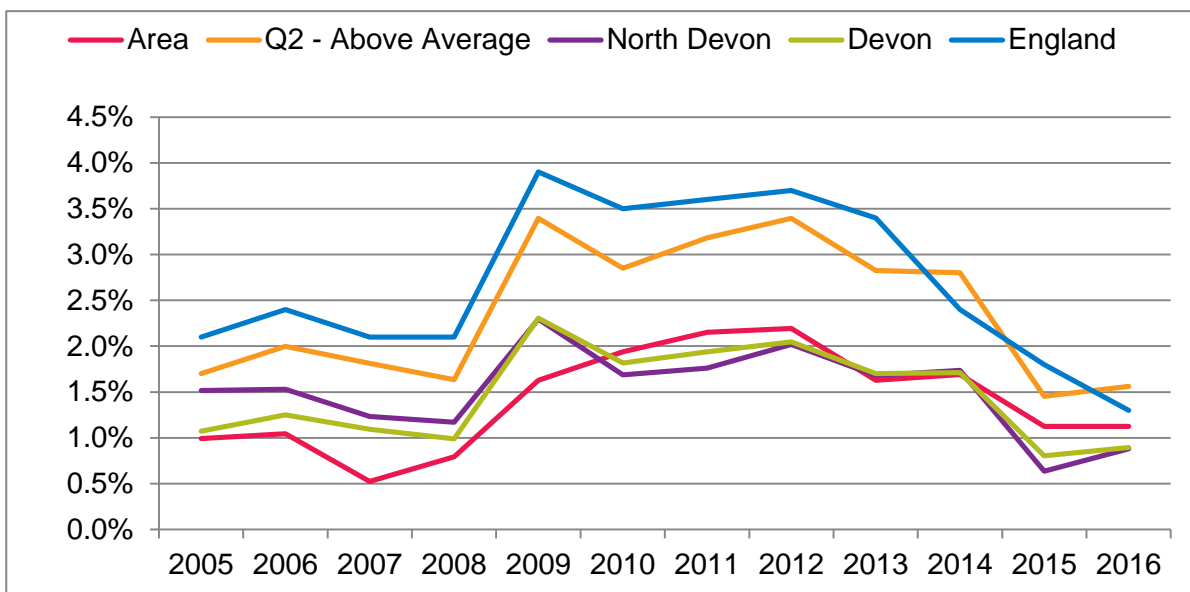
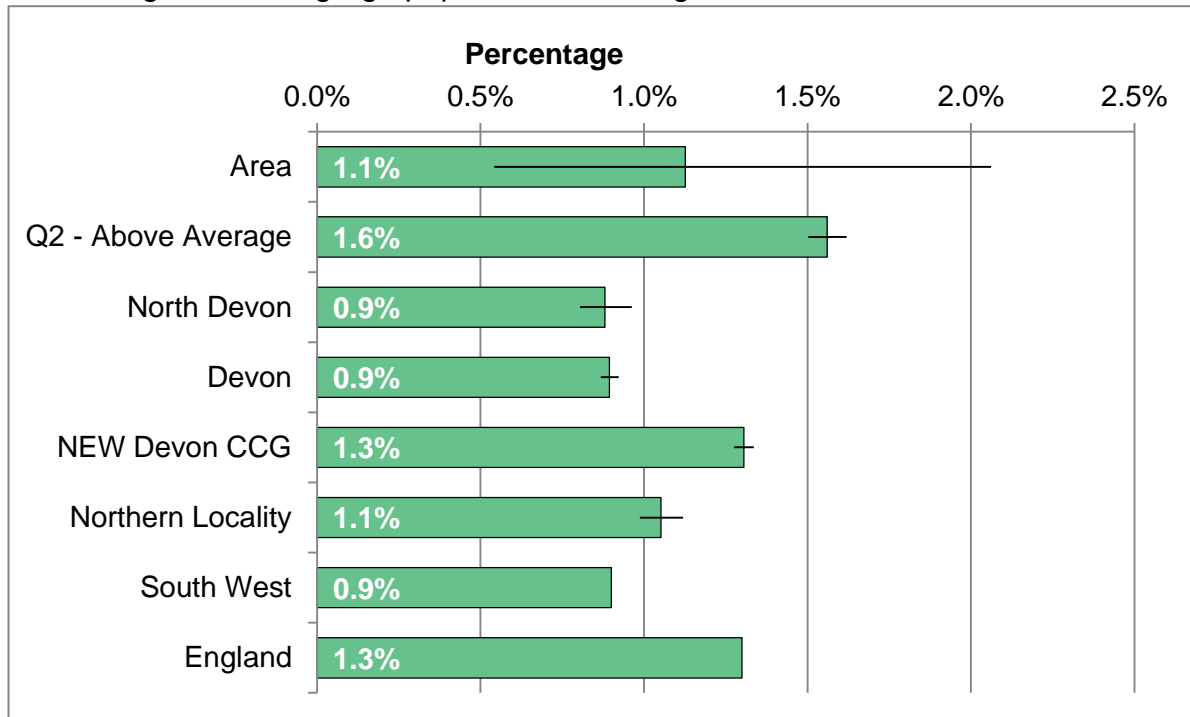


Area	2011	2012	2013	2014	2015	2016
Total claimants	15	15	15	20	25	20
Area rate	1.6%	1.6%	1.7%	2.3%	2.8%	2.3%
Q2 - Above Average	1.4%	1.5%	1.6%	1.6%	1.6%	1.3%
North Devon	1.1%	1.2%	1.3%	1.3%	1.3%	1.1%
Devon	1.1%	1.2%	1.2%	1.2%	1.3%	1.1%
NEW Devon CCG	1.2%	1.3%	1.4%	1.4%	1.4%	1.2%
Northern Locality	1.2%	1.2%	1.4%	1.4%	1.3%	1.2%
South West	1.0%	1.1%	1.2%	1.2%	1.2%	1.1%
England	1.0%	1.1%	1.1%	1.1%	1.1%	0.9%



# JOBSEEKERS ALLOWANCE CLAIMANT RATE

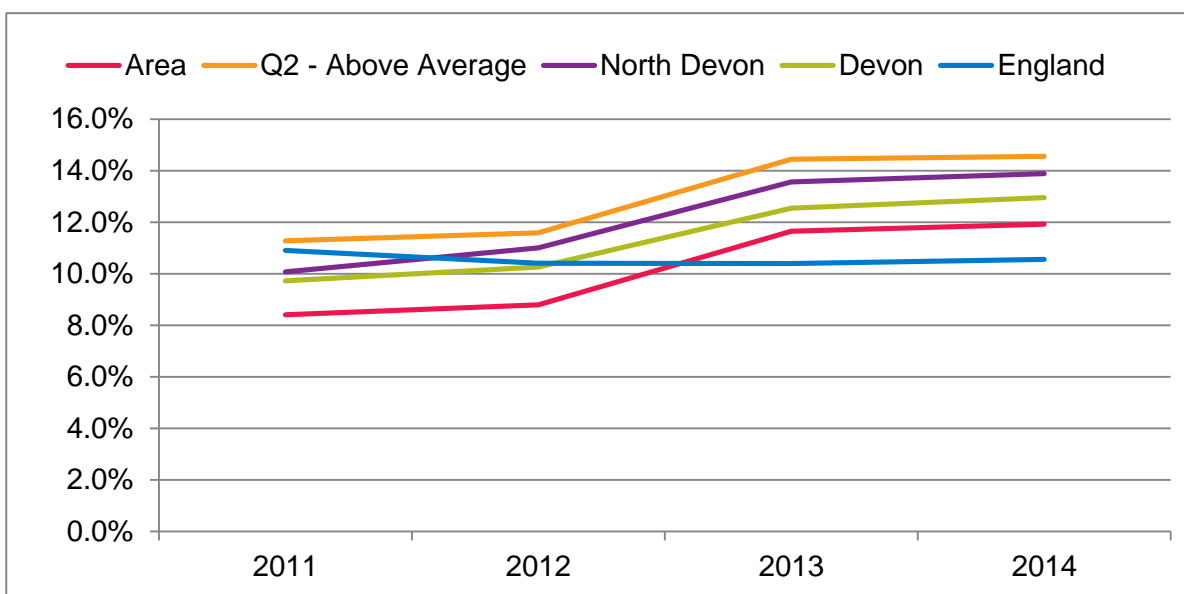
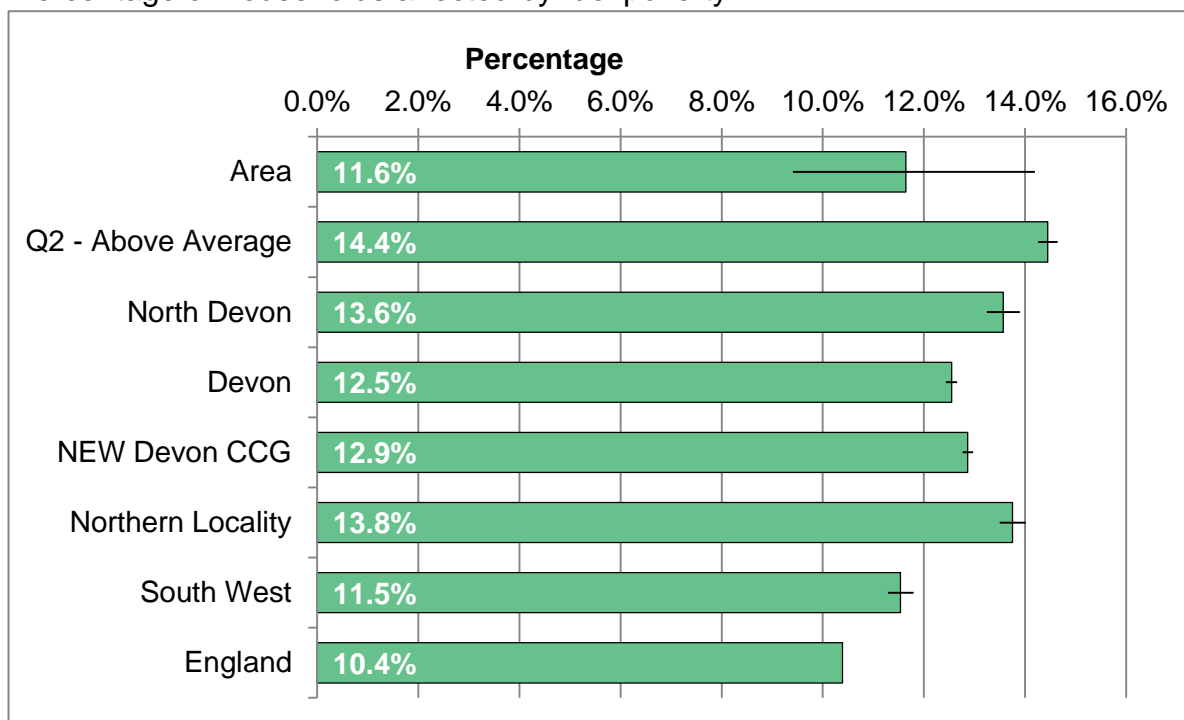
Percentage of working-age population receiving Jobseekers Allowance.



Area	2011	2012	2013	2014	2015	2016
Total claimants	20	20	17	15	10	10
Area rate	2.2%	2.2%	1.6%	1.7%	1.1%	1.1%
Q2 - Above Average	3.2%	3.4%	2.8%	2.8%	1.5%	1.6%
North Devon	1.8%	2.0%	1.7%	1.7%	0.6%	0.9%
Devon	1.9%	2.0%	1.7%	1.7%	0.8%	0.9%
NEW Devon CCG	2.5%	2.6%	2.2%	2.2%	1.2%	1.3%
Northern Locality	2.1%	2.3%	2.0%	2.0%	0.9%	1.1%
South West	2.4%	2.6%	2.3%	1.5%	1.1%	0.9%
England	3.6%	3.7%	3.4%	2.4%	1.8%	1.3%

# FUEL POVERTY

Percentage of households affected by fuel poverty.

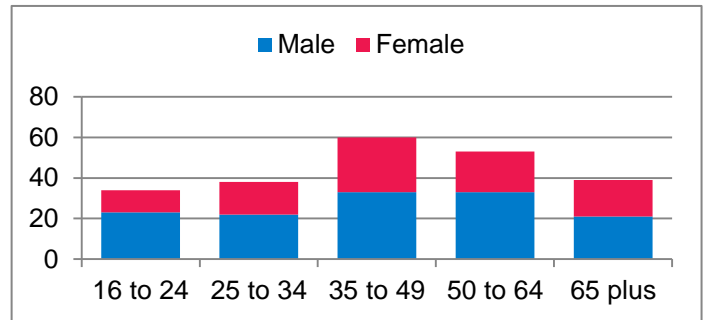


Area	2011	2012	2013	2014
Fuel poor households	63	63	85	87
Area rate	8.4%	8.8%	11.6%	11.9%
Q2 - Above Average	11.3%	11.6%	14.4%	14.6%
North Devon	10.1%	11.0%	13.6%	13.9%
Devon	9.7%	10.3%	12.5%	13.0%
NEW Devon CCG	9.8%	10.3%	12.9%	13.0%
Northern Locality	9.9%	11.2%	13.8%	14.3%
South West	9.4%	9.4%	11.5%	12.2%
England	10.9%	10.4%	10.4%	10.6%

# HEALTH-RELATED BEHAVIOUR ESTIMATES

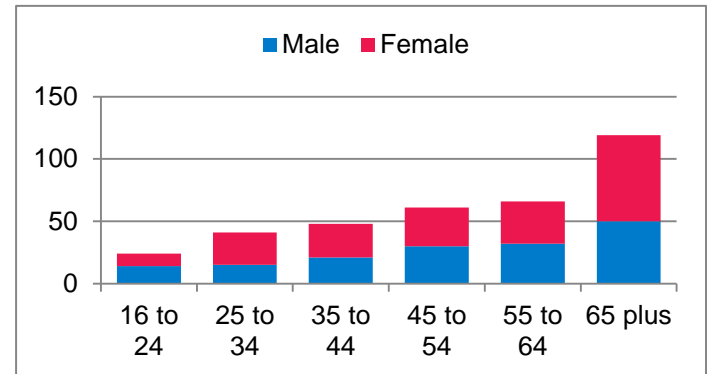
## Smoking: Estimated number of current smokers aged 16 and over

Age	Male	Female	Total
16 to 24	23	11	34
25 to 34	22	16	38
35 to 49	33	27	60
50 to 64	33	20	53
65 plus	21	18	39
Total	132	92	224
Percent	21.9%	12.8%	16.9%



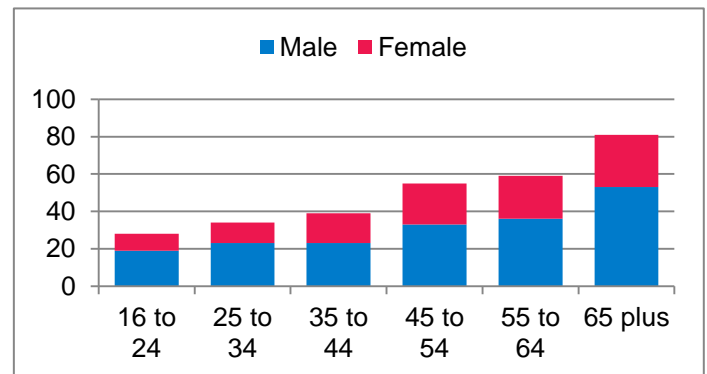
## Obesity: Estimated number aged 16 and over with a BMI of 30 or more

Age	Male	Female	Total
16 to 24	14	10	24
25 to 34	15	26	41
35 to 44	21	27	48
45 to 54	30	31	61
55 to 64	32	34	66
65 plus	50	69	119
Total	162	197	359
Percent	26.9%	27.1%	27.0%



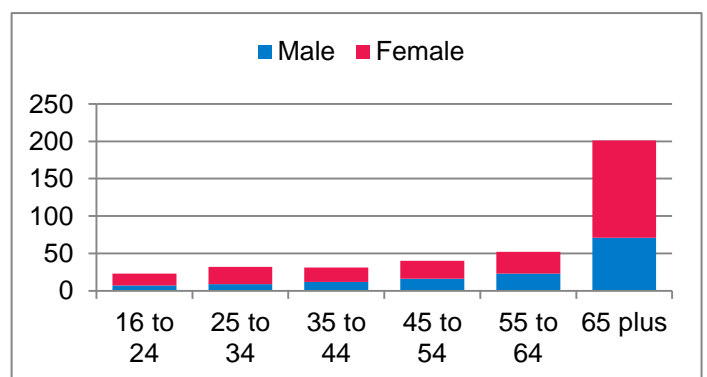
## Alcohol: Increasing and higher risk drinking in persons aged 16 and over

Age	Male	Female	Total
16 to 24	19	9	28
25 to 34	23	11	34
35 to 44	23	16	39
45 to 54	33	22	55
55 to 64	36	23	59
65 plus	53	28	81
Total	187	109	296
Percent	30.9%	15.2%	22.4%



## Physical Inactivity: Less than 30 minutes of moderate physical activity per week

Age	Male	Female	Total
16 to 24	7	16	23
25 to 34	9	23	32
35 to 44	12	19	31
45 to 54	16	24	40
55 to 64	23	29	52
65 plus	71	130	201
Total	138	241	379
Percent	22.9%	33.3%	28.5%



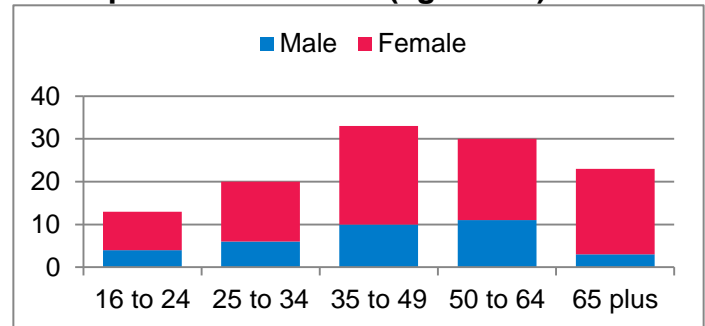
# MENTAL ILL HEALTH ESTIMATES

## Modelled Self-Reported Wellbeing Estimates

Measure	Number	Percent	Criteria
Low Happiness Score	491	30%	0 to 4 on a 10 point scale
Low Worthwhile Score	343	21%	0 to 4 on a 10 point scale
Low Life Satisfaction Score	425	26%	0 to 4 on a 10 point scale

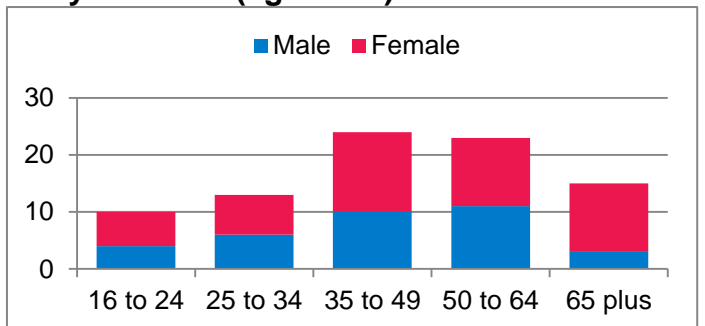
## Estimated Prevalence of Mixed Anxiety and Depressive Disorder (aged 16+)

Age	Male	Female	Total
16 to 24	4	9	13
25 to 34	6	14	20
35 to 49	10	23	33
50 to 64	11	19	30
65 plus	3	20	23
Total	34	85	119
Percent	5.8%	11.8%	9.0%



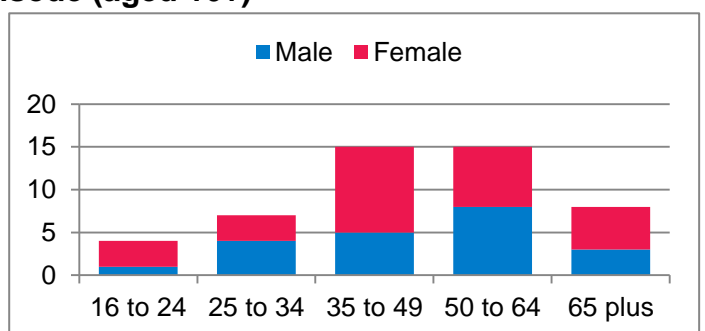
## Estimated Prevalence of Generalised Anxiety Disorder (aged 16+)

Age	Male	Female	Total
16 to 24	4	6	10
25 to 34	6	7	13
35 to 49	10	14	24
50 to 64	11	12	23
65 plus	3	12	15
Total	34	51	85
Percent	5.8%	7.1%	6.5%



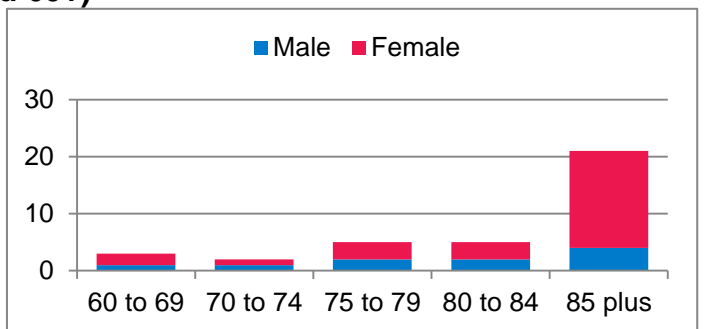
## Estimated Prevalence of Depressive Episode (aged 16+)

Age	Male	Female	Total
16 to 24	1	3	4
25 to 34	4	3	7
35 to 49	5	10	15
50 to 64	8	7	15
65 plus	3	5	8
Total	21	28	49
Percent	3.5%	3.9%	3.7%



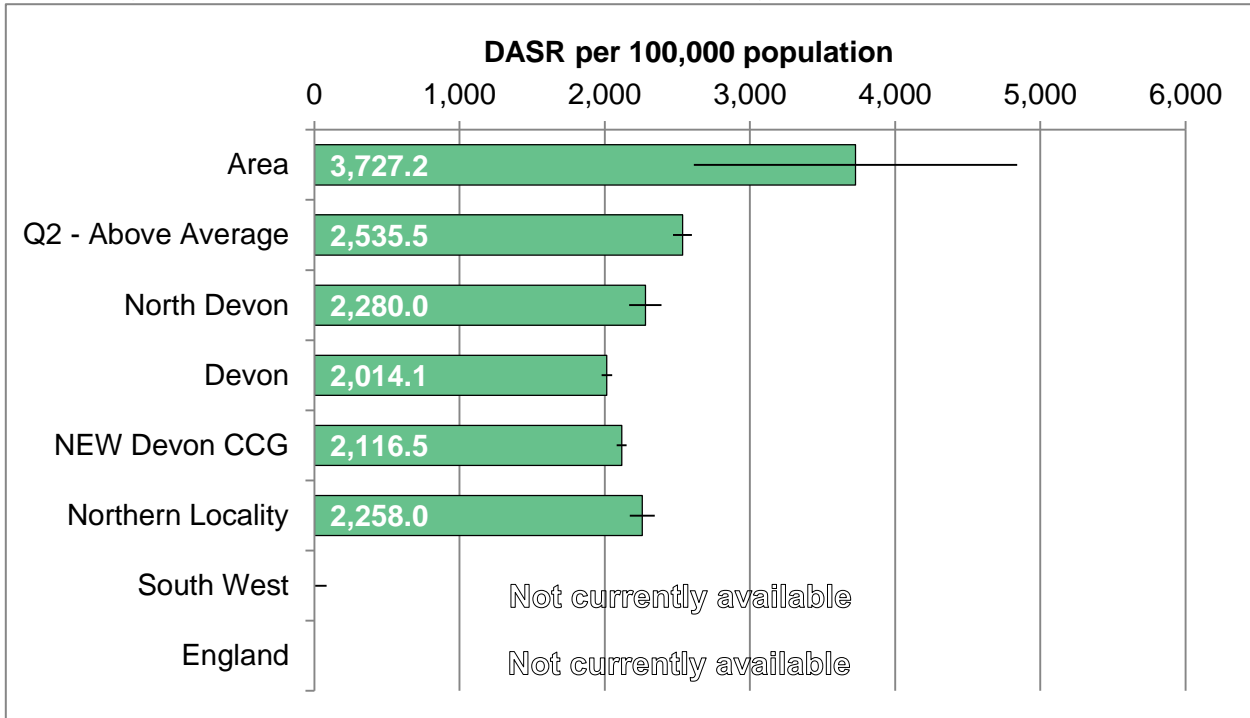
## Estimated Prevalence of Dementia (aged 60+)

Age	Male	Female	Total
60 to 69	1	2	3
70 to 74	1	1	2
75 to 79	2	3	5
80 to 84	2	3	5
85 plus	4	17	21
Total	10	26	36
Percent	5.0%	8.7%	7.2%



# ACCESS TO PSYCHOLOGICAL THERAPIES

Direct-age standardised rate of referrals to psychological therapies (IAPT)



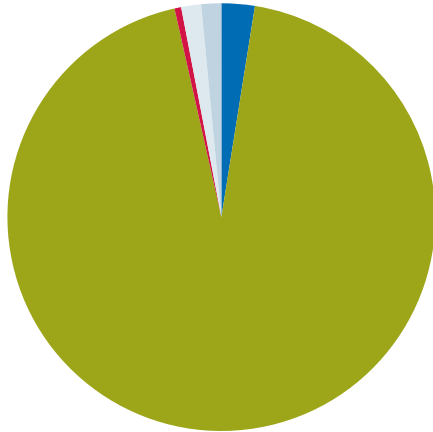
Trend information not currently available

Area	2015
Number per annum	43
Area rate	3727.2
Q2 - Above Average	2535.5
North Devon	2280.0
Devon	2014.1
NEW Devon CCG	2116.5
Northern Locality	2258.0
South West	N/A
England	N/A

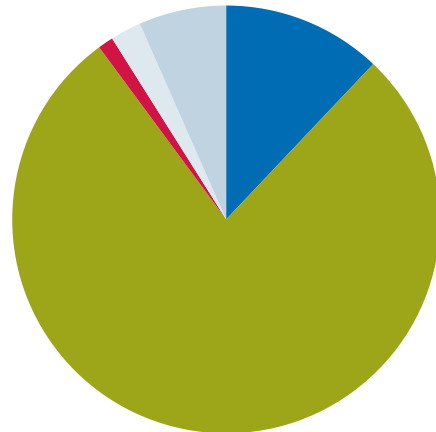
# USE OF HEALTH SERVICES

Number and share of population using different health care providers

## Non-Elective Admissions 2016



## Elective Admissions 2016

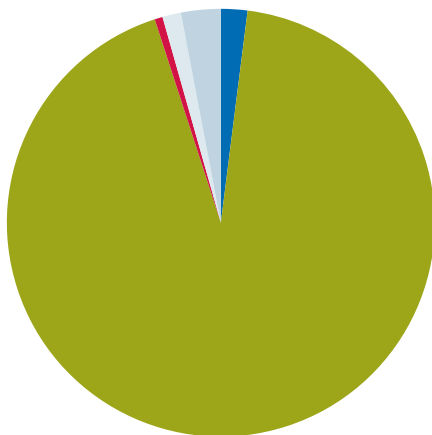


Location	No. P.A.
RD&E Exeter Hosp	5
Barnstaple Hosp	187
Torbay Hosp	<5
Plymouth Hosp	<5
Community Hosp	<5
Outside Devon	<5
Total	199

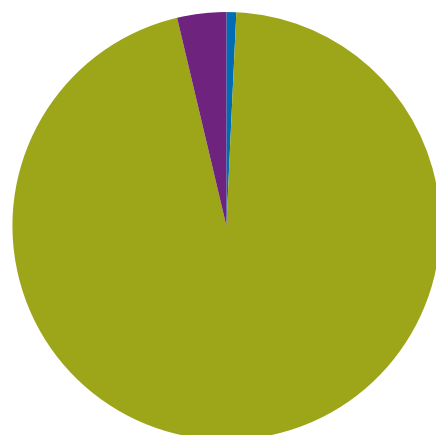


Location	No. P.A.
RD&E Exeter Hosp	31
Barnstaple Hosp	200
Torbay Hosp	<5
Plymouth Hosp	<5
Community Hosp	6
Outside Devon	17
Total	257

## Urgent Care 2016



## Births 2010 to 2015



Location*	No. P.A.
Exeter A&E	10
Barnstaple A&E	465
Torbay A&E	<5
Plymouth A&E	<5
Local MIU/WIC	7
Outside Devon	15
Total	500

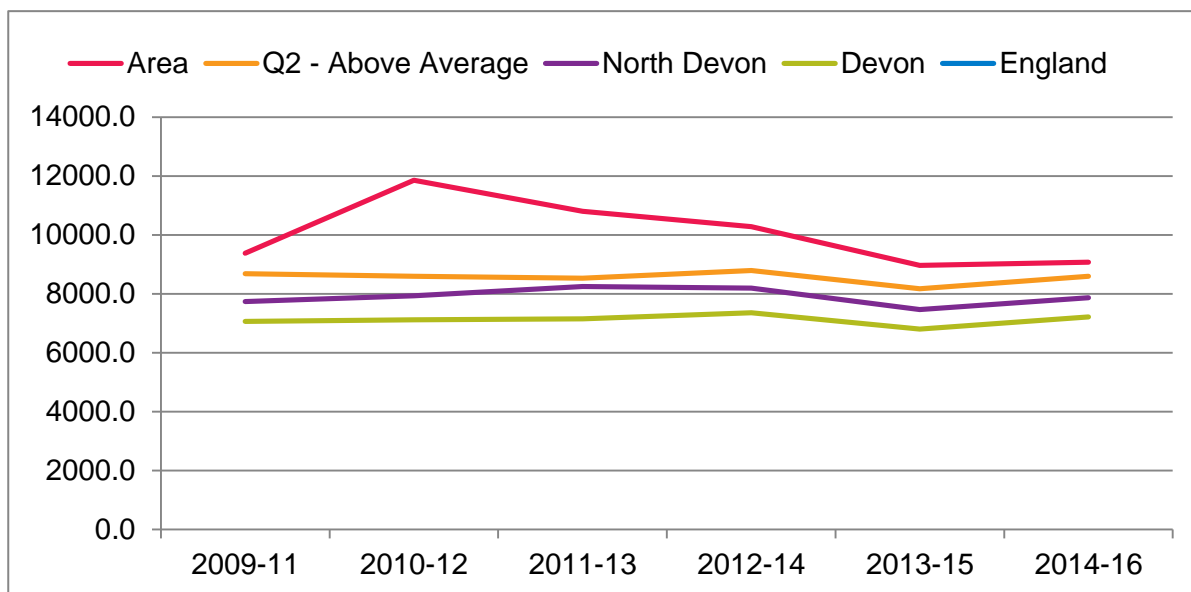
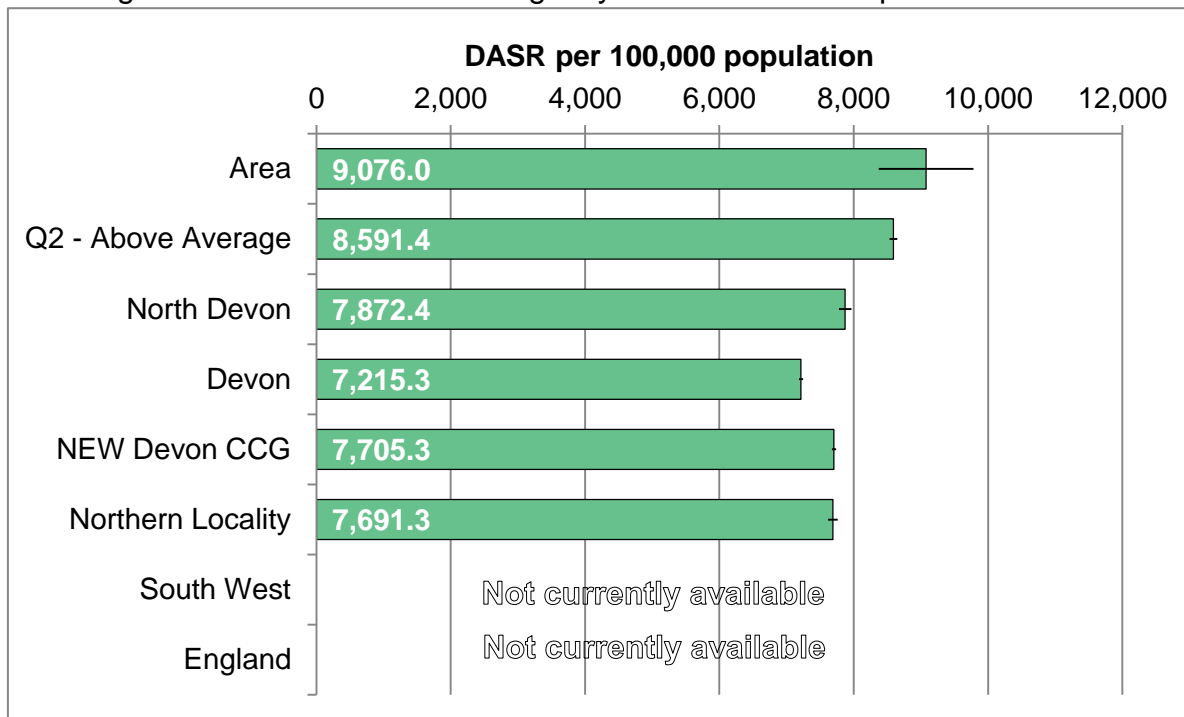


Location	2010-15
RD&E Exeter Hosp	<5
Barnstaple Hosp	129
Torbay Hosp	<5
Plymouth Hosp	<5
Home	5
Community Hosp	<5
Outside Devon	<5
Total	135

\* A&E is accident and emergency, MIU is minor injury unit, WIC is walk-in centre

# EMERGENCY ADMISSIONS

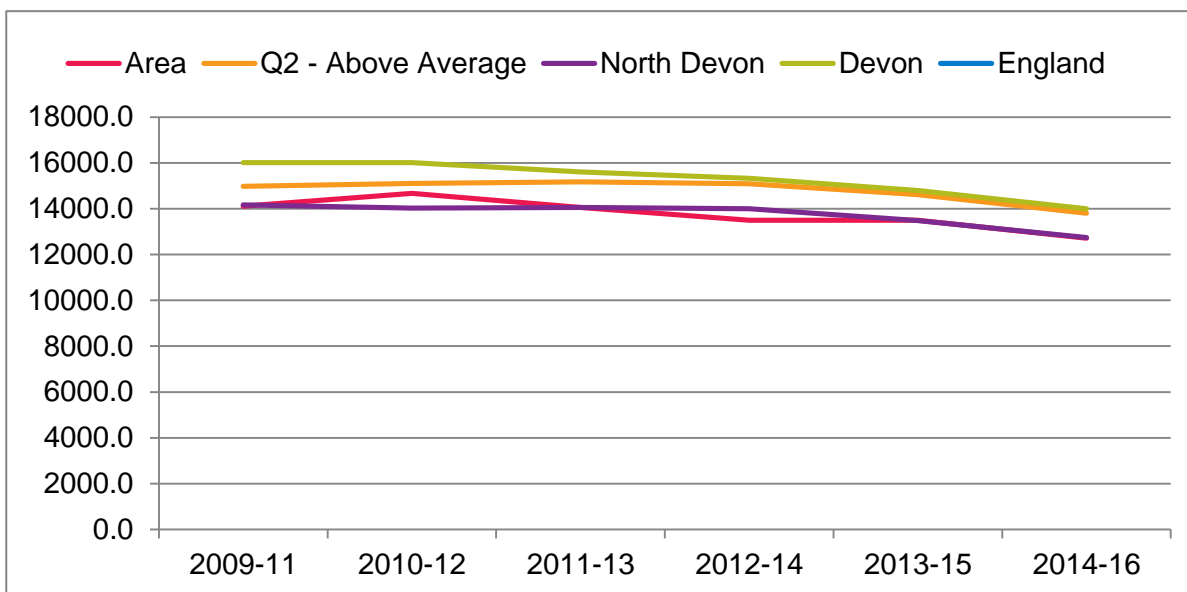
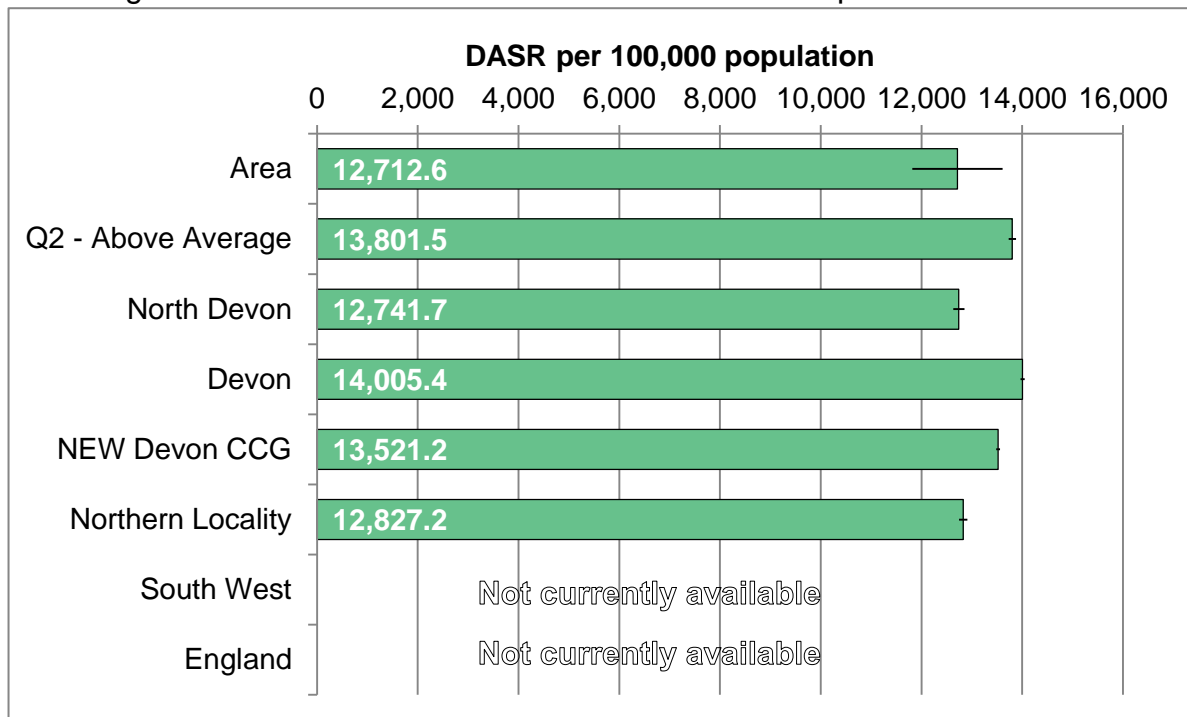
Direct-age standardised rate of emergency admissions to hospital.



Area	2009-11	2010-12	2011-13	2012-14	2013-15	2014-16
Average per annum	200	230	228	219	198	197
Area rate	9375.9	11861.3	10800.3	10275.2	8970.0	9076.0
Q2 - Above Average	8681.2	8593.7	8532.4	8789.0	8176.5	8591.4
North Devon	7732.3	7930.3	8244.1	8193.5	7464.0	7872.4
Devon	7066.4	7114.5	7151.7	7359.2	6800.7	7215.3
NEW Devon CCG	7946.6	7768.2	7714.3	7922.3	7239.9	7705.3
Northern Locality	7432.7	7689.3	7945.5	7980.0	7264.0	7691.3
South West	N/A	N/A	N/A	N/A	N/A	N/A
England	N/A	N/A	N/A	N/A	N/A	N/A

# ELECTIVE ADMISSIONS

Direct-age standardised rate of elective admissions to hospital.

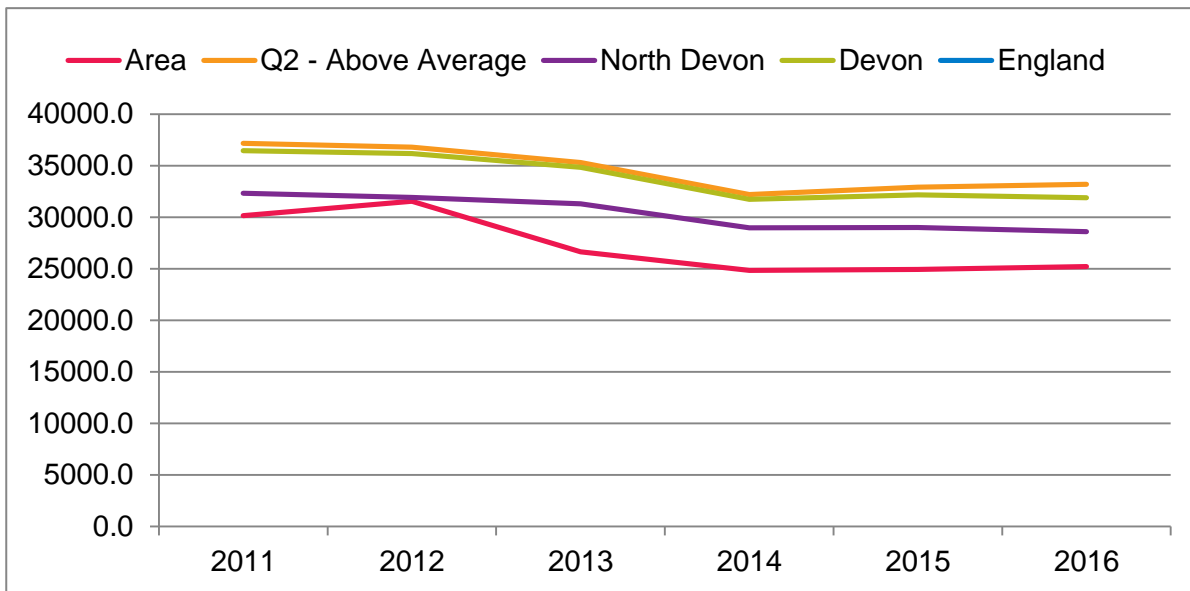
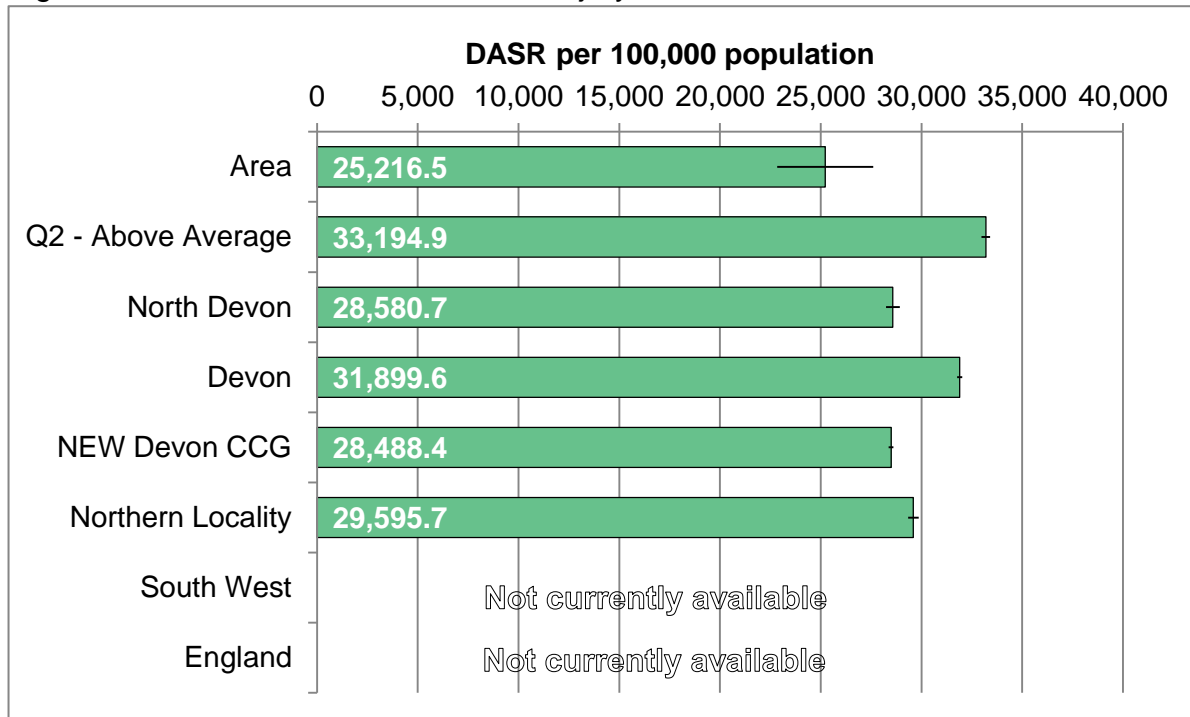


Area	2009-11	2010-12	2011-13	2012-14	2013-15	2014-16
Average per annum	289	272	266	262	267	267
Area rate	14108.6	14665.3	14050.7	13500.5	13500.5	12712.6
Q2 - Above Average	14974.2	15108.0	15168.0	15083.2	14611.6	13801.5
North Devon	14173.0	14024.6	14059.2	14004.6	13478.8	12741.7
Devon	16010.9	16017.7	15609.2	15324.6	14791.8	14005.4
NEW Devon CCG	15023.0	15123.6	14902.6	14719.9	14240.4	13521.2
Northern Locality	14025.2	13934.2	14034.1	14087.1	13556.3	12827.2
South West	N/A	N/A	N/A	N/A	N/A	N/A
England	N/A	N/A	N/A	N/A	N/A	N/A



# URGENT CARE ATTENDANCES

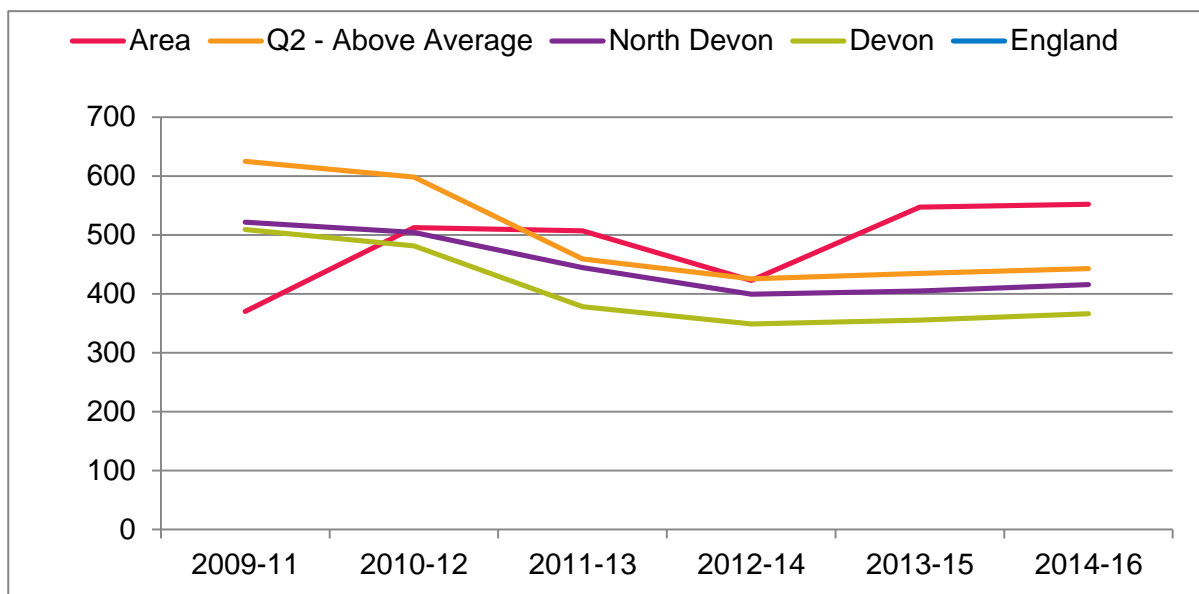
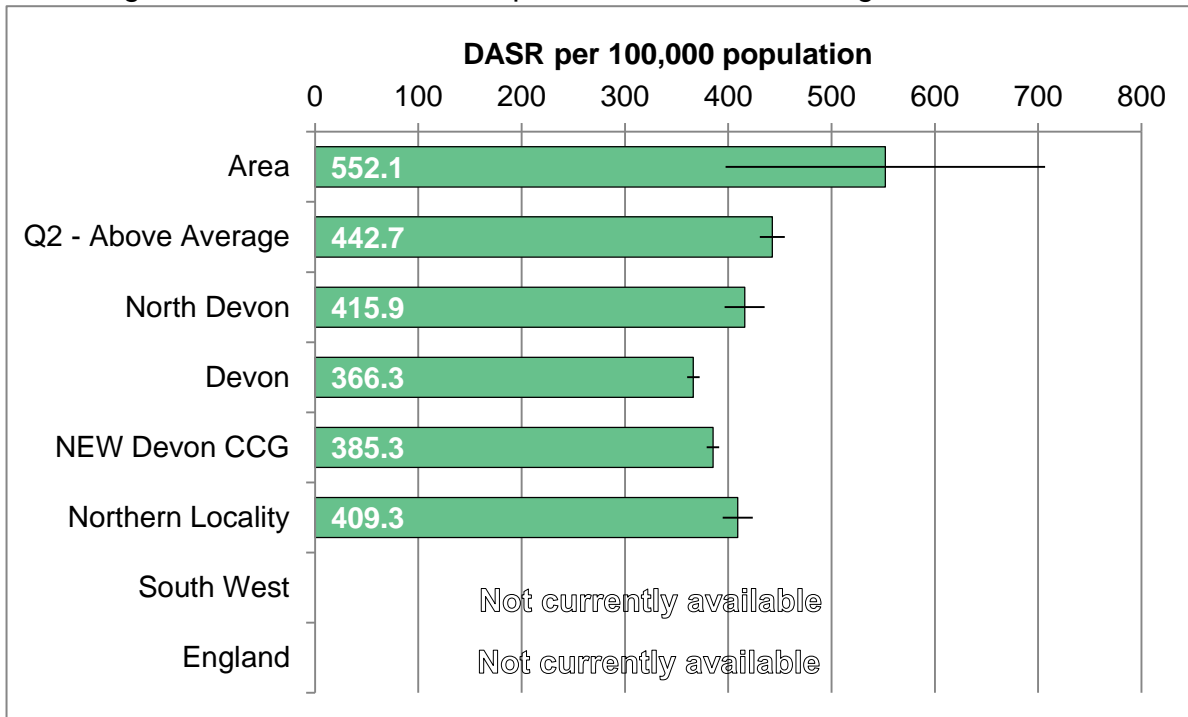
Age standardised rate of A&E / Minor Injury Unit and Walk-in centre attendances.



Area	2011	2012	2013	2014	2015	2016
Average per annum	482	539	447	442	424	442
Area rate	30135.9	31544.2	26627.0	24836.0	24938.7	25216.5
Q2 - Above Average	37176.8	36799.8	35304.5	32188.6	32910.6	33194.9
North Devon	32333.8	31923.2	31297.8	28963.1	28992.5	28580.7
Devon	36439.2	36160.0	34846.2	31719.6	32171.1	31899.6
NEW Devon CCG	30898.1	30739.6	29684.0	26982.6	28000.9	28488.4
Northern Locality	33292.1	33290.3	32423.4	29882.6	30119.0	29595.7
South West	N/A	N/A	N/A	N/A	N/A	N/A
England	N/A	N/A	N/A	N/A	N/A	N/A

# ACCIDENTAL FALLS ADMISSIONS

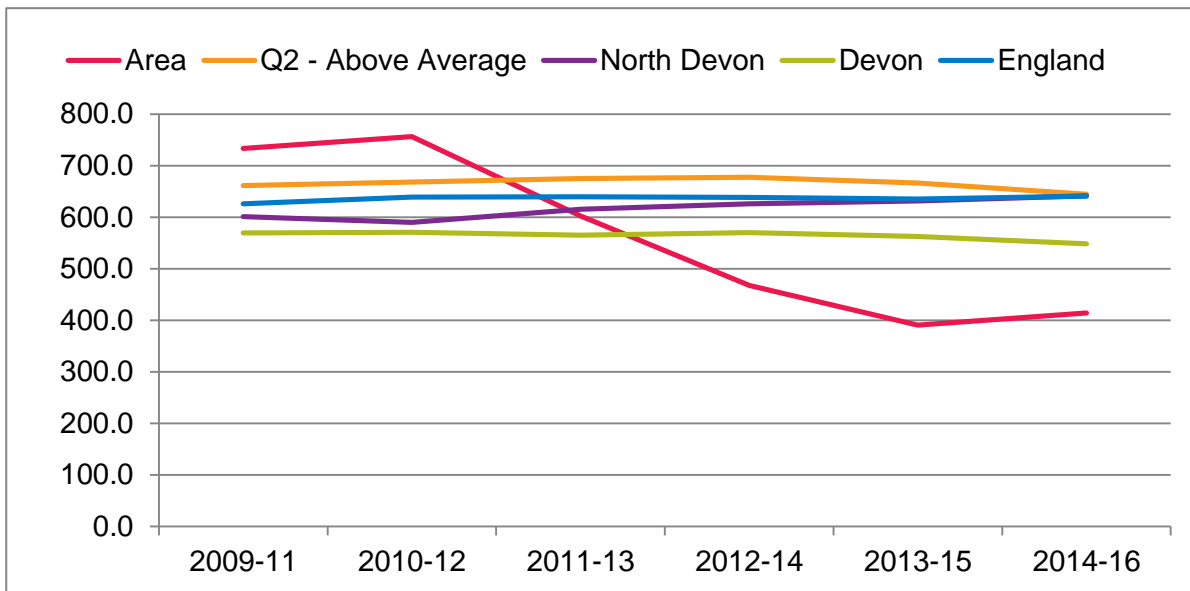
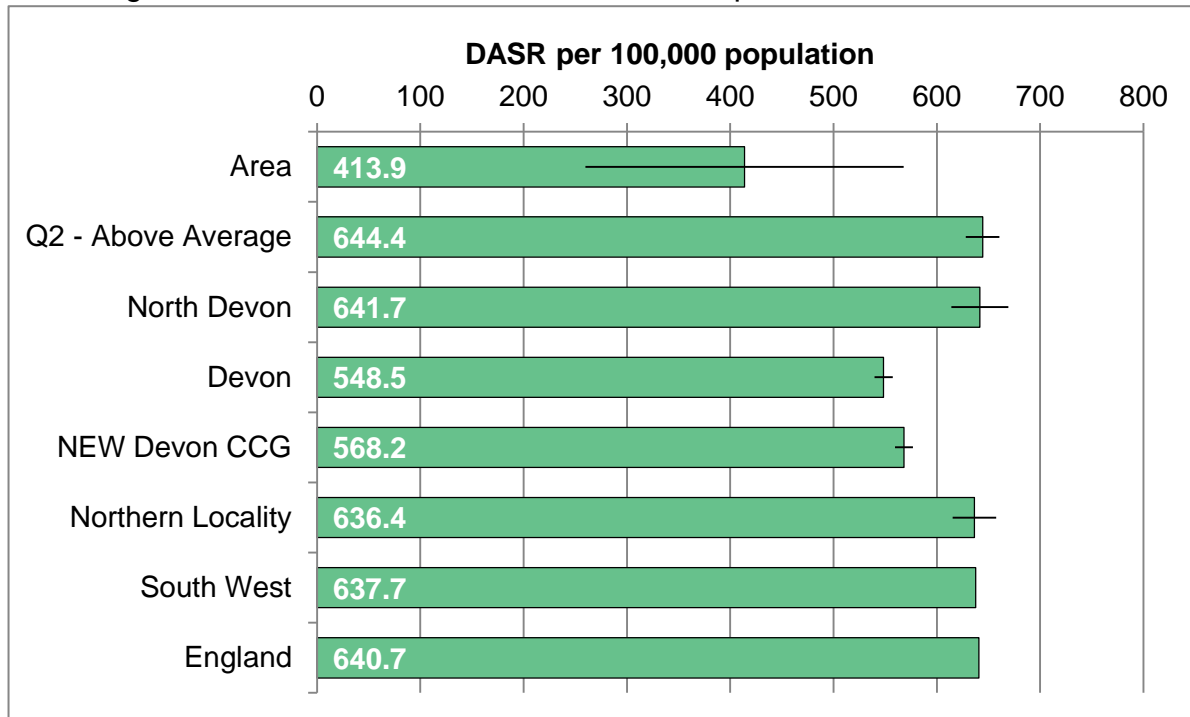
Direct-age standardised rate of hospital admissions following accidental fall.



Area	2009-11	2010-12	2011-13	2012-14	2013-15	2014-16
Average per annum	12	15	16	17	13	13
Area rate	370.2	512.4	507.1	422.9	547.0	552.1
Q2 - Above Average	625.0	598.0	459.3	425.6	434.9	442.7
North Devon	521.9	504.0	444.3	399.1	404.6	415.9
Devon	509.4	481.7	378.3	348.9	355.1	366.3
NEW Devon CCG	549.1	525.0	399.4	366.1	376.0	385.3
Northern Locality	510.6	499.2	426.7	387.2	392.6	409.3
South West	N/A	N/A	N/A	N/A	N/A	N/A
England	N/A	N/A	N/A	N/A	N/A	N/A

# ALCOHOL-RELATED ADMISSIONS

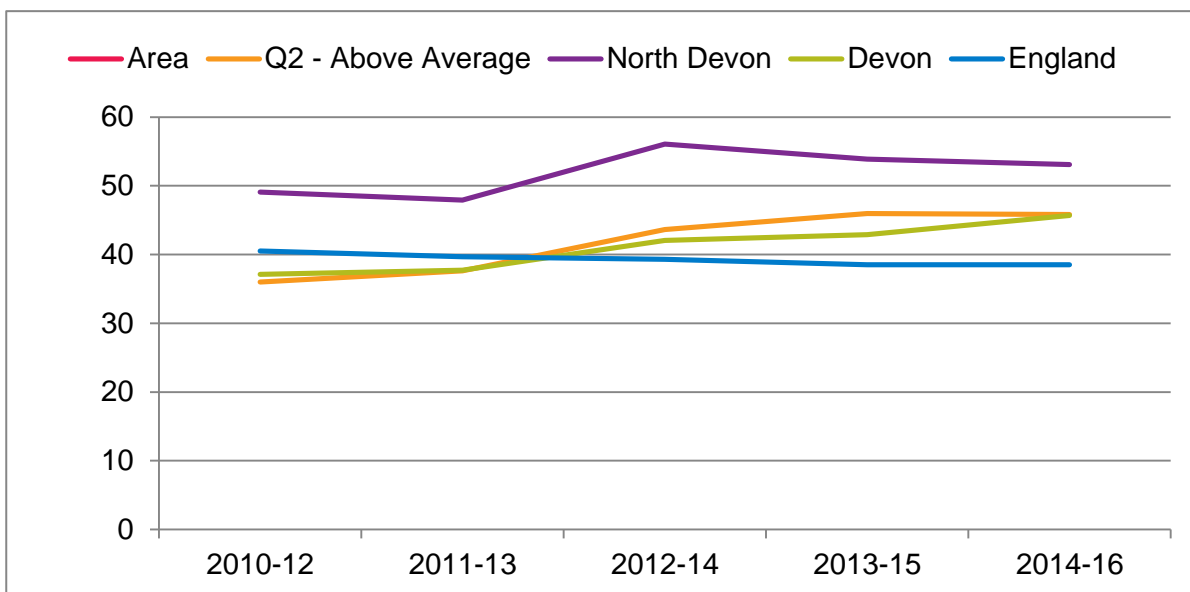
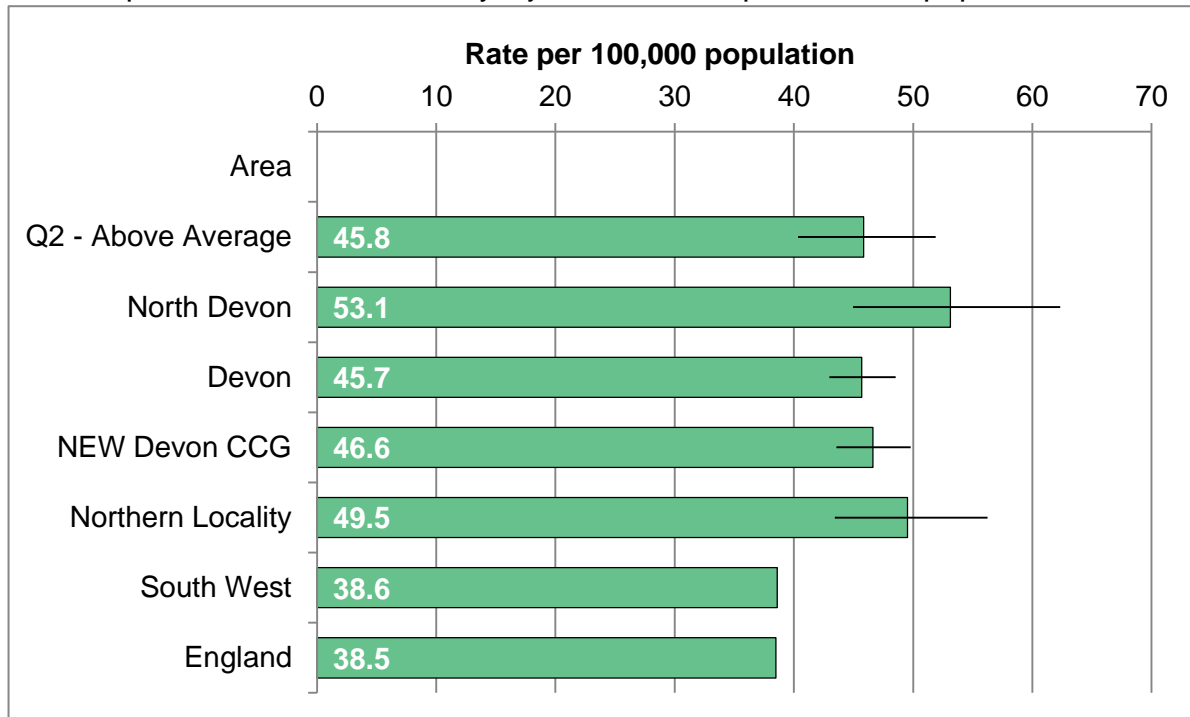
Direct-age standardised rate of alcohol-related hospital admissions.



Area	2009-11	2010-12	2011-13	2012-14	2013-15	2014-16
Average per annum	15	14	11	9	8	9
Area rate	733.2	756.6	602.2	467.8	390.5	413.9
Q2 - Above Average	661.2	668.3	675.0	677.5	666.1	644.4
North Devon	601.2	590.0	615.5	625.8	631.3	641.7
Devon	569.4	570.8	564.8	570.0	562.4	548.5
NEW Devon CCG	590.3	594.2	587.1	589.6	577.7	568.2
Northern Locality	594.3	595.8	612.7	619.5	629.9	636.4
South West	635.7	641.7	637.7	628.3	627.0	637.7
England	626.0	639.0	639.3	638.3	635.0	640.7

# KILLED OR SERIOUSLY INJURED ON ROADS

Rate of persons killed or seriously injured on roads per 100,000 population.

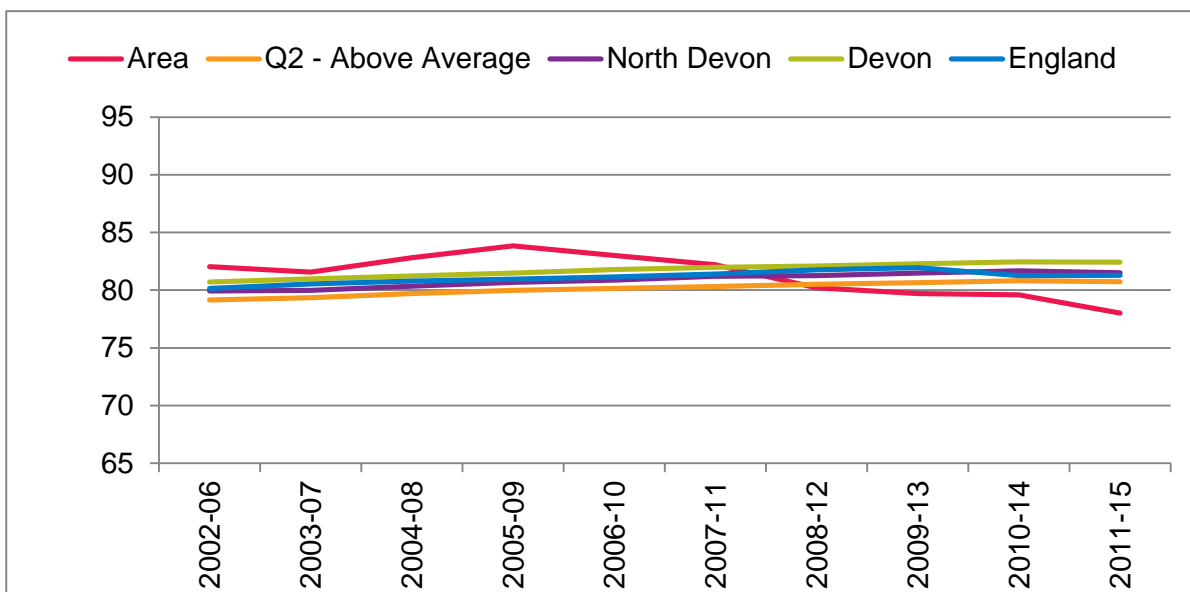
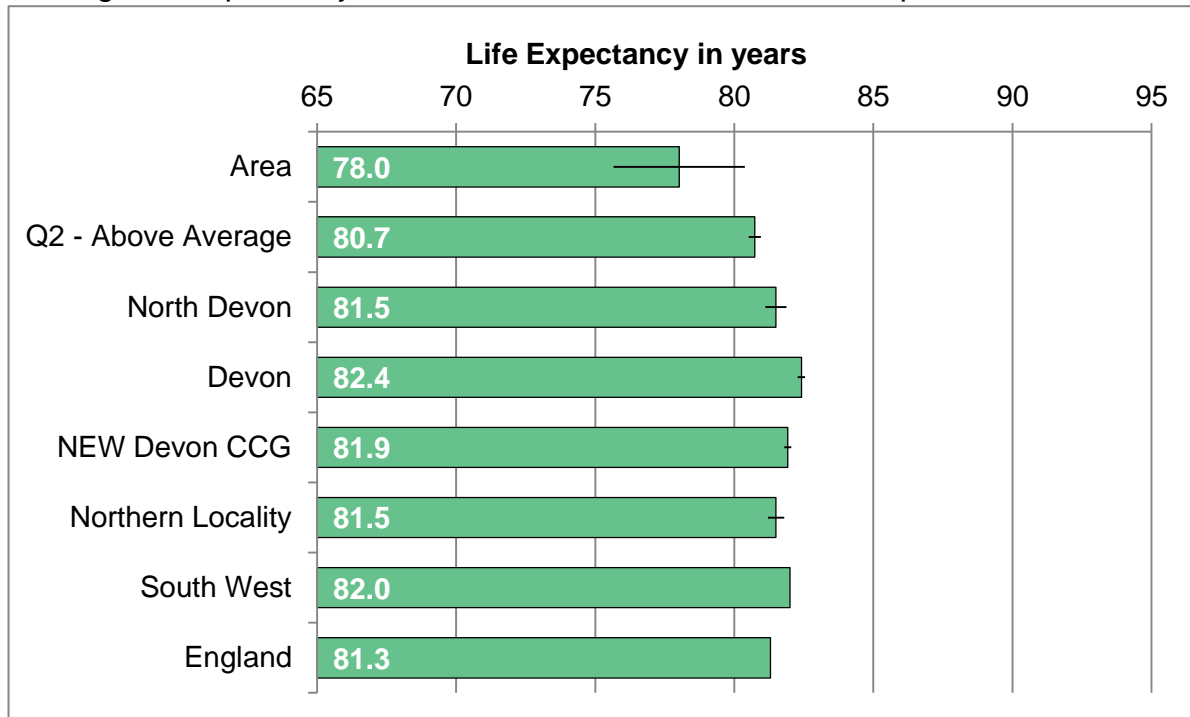


Area	2010-12	2011-13	2012-14	2013-15	2014-16
Average per annum	#	#	#	#	#
Area rate	#	#	#	#	#
Q2 - Above Average	36.0	37.6	43.7	46.0	45.8
North Devon	49.1	47.9	56.1	53.9	53.1
Devon	37.1	37.7	42.0	42.9	45.7
NEW Devon CCG	37.3	38.5	44.2	44.8	46.6
Northern Locality	42.0	42.7	49.2	49.7	49.5
South West	37.6	37.5	38.4	38.6	38.6
England	40.5	39.7	39.3	38.5	38.5

CCG figure is Devon County Council component of CCG only

# LIFE EXPECTANCY AT BIRTH

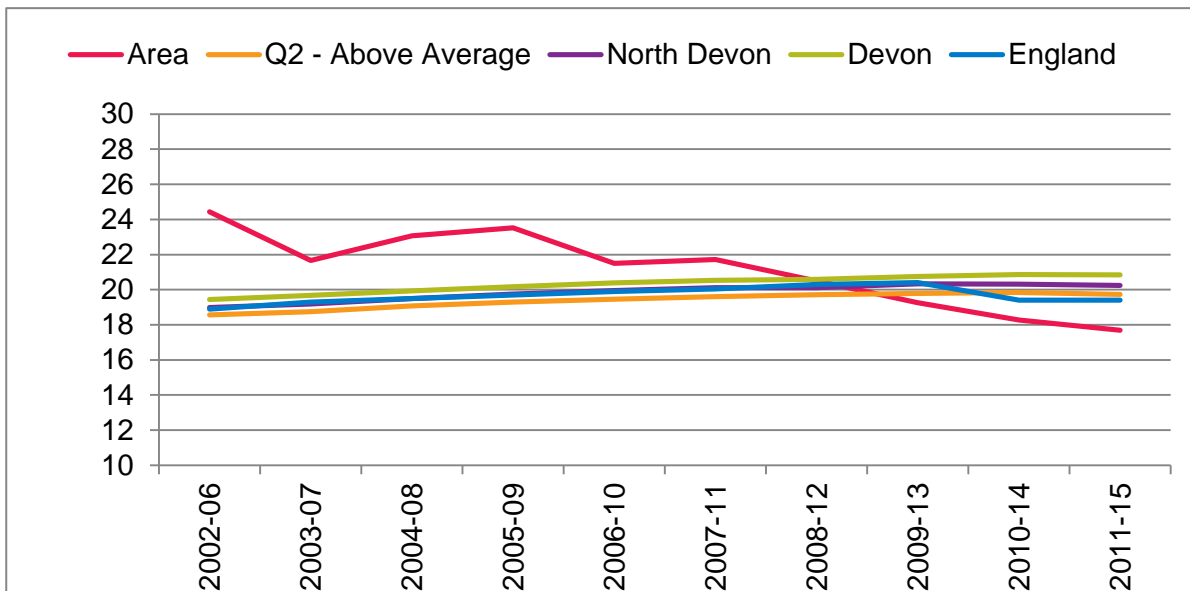
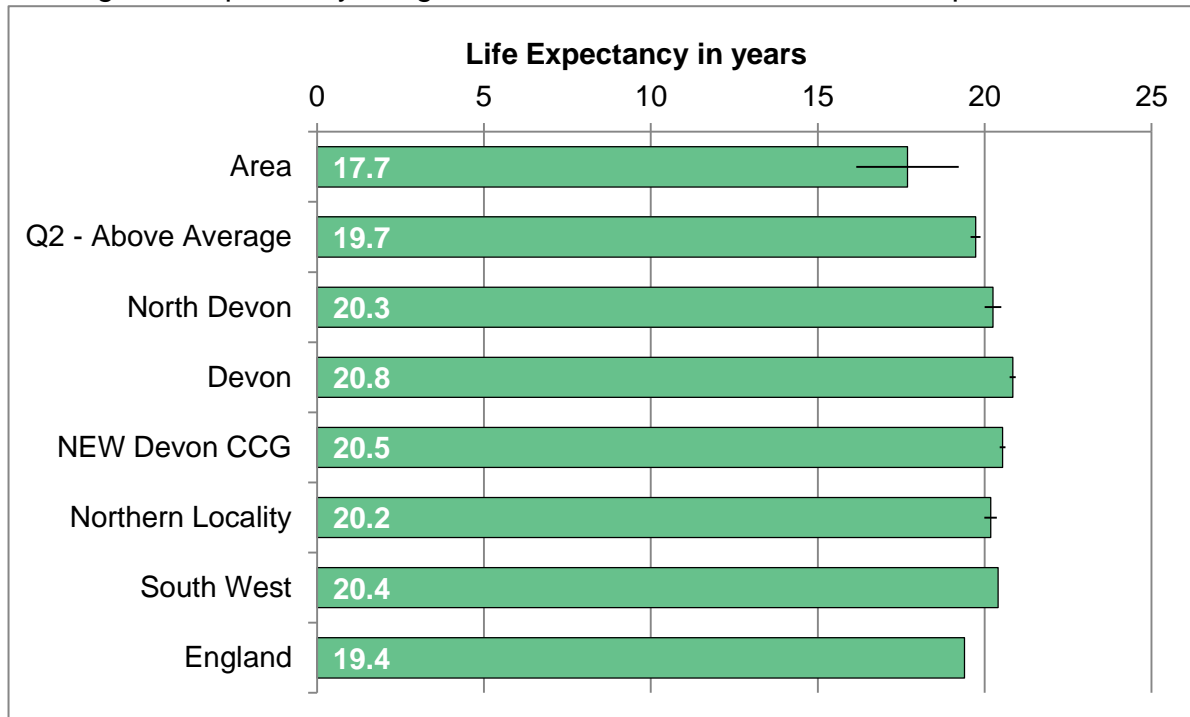
Average life expectancy at birth for residents, combined for all persons.



Area	2006-10	2007-11	2008-12	2009-13	2010-14	2011-15
Deaths per annum	16	16	19	23	26	26
Area rate	83.0	82.2	80.2	79.7	79.6	78.0
Q2 - Above Average	80.1	80.3	80.5	80.7	80.8	80.7
North Devon	80.9	81.2	81.3	81.5	81.7	81.5
Devon	81.8	82.0	82.1	82.3	82.5	82.4
NEW Devon CCG	81.2	81.5	81.6	81.7	81.9	81.9
Northern Locality	81.1	81.3	81.4	81.6	81.7	81.5
South West	80.2	80.5	80.9	81.1	82.0	82.0
England	81.2	81.4	81.8	82.0	81.3	81.3

# LIFE EXPECTANCY AT AGE 65

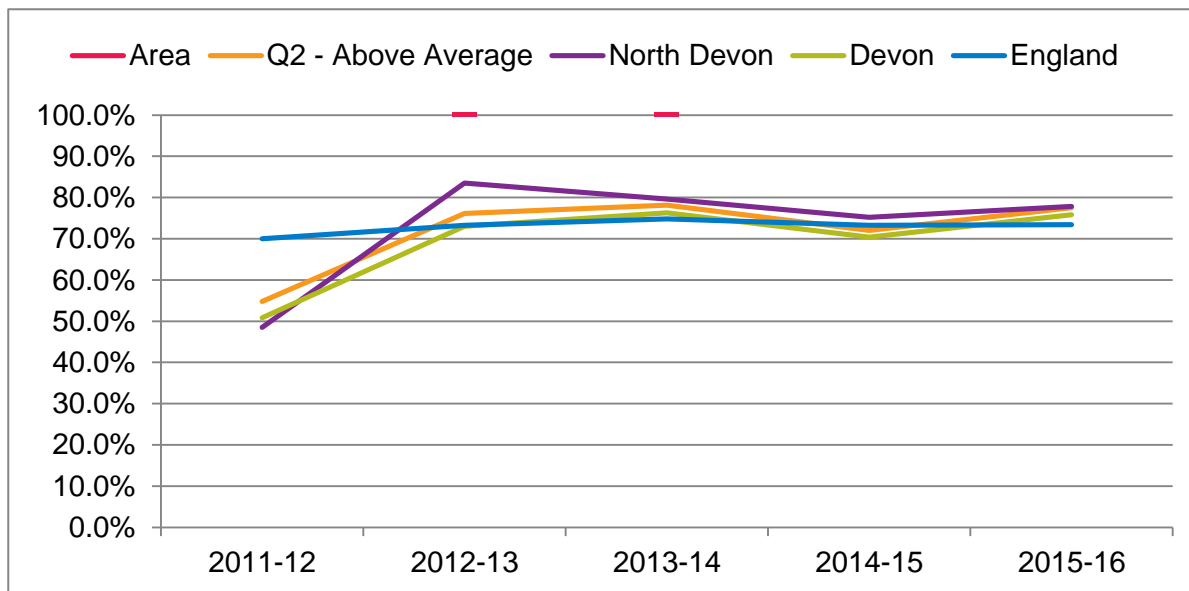
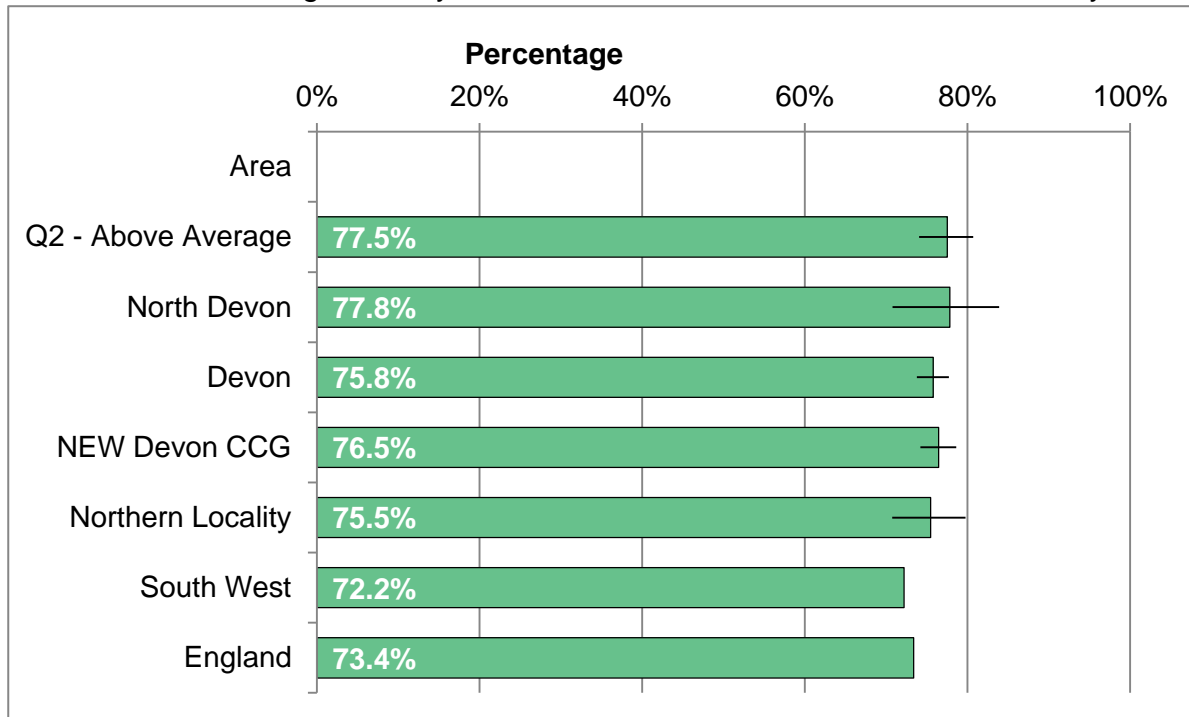
Average life expectancy at age 65 for residents. Combined for all persons.



Area	2006-10	2007-11	2008-12	2009-13	2010-14	2011-15
Deaths per annum	14	13	15	19	23	26
Area rate	21.5	21.7	20.5	19.3	18.3	17.7
Q2 - Above Average	19.5	19.6	19.7	19.8	19.8	19.7
North Devon	20.0	20.1	20.1	20.3	20.3	20.3
Devon	20.4	20.5	20.6	20.8	20.9	20.8
NEW Devon CCG	20.1	20.2	20.3	20.4	20.6	20.5
Northern Locality	20.0	20.1	20.1	20.3	20.3	20.2
South West	19.2	19.4	19.7	19.8	20.5	20.4
England	19.9	20.1	20.3	20.4	19.4	19.4

# LEARNING DISABILITY ACCOMMODATION

Adults with a learning disability who live in their own home or with their family.

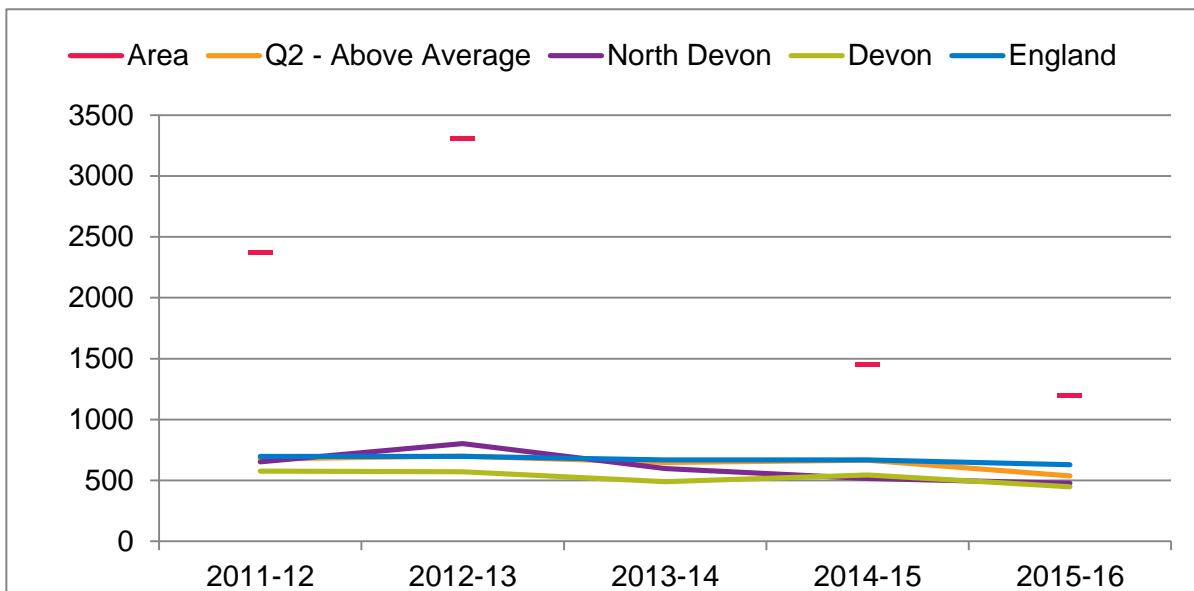
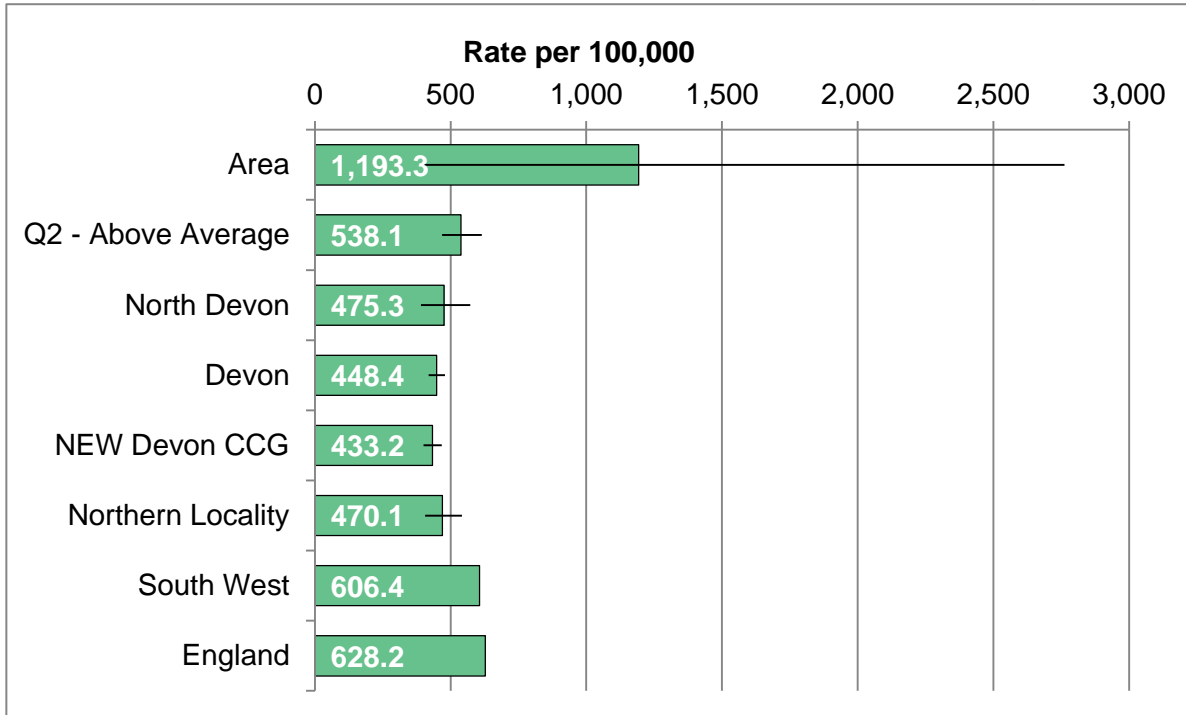


Area	2011-12	2012-13	2013-14	2014-15	2015-16
Number per annum	#	6	5	#	#
Area rate	#	100.0%	100.0%	#	#
Q2 - Above Average	54.8%	76.1%	78.1%	72.0%	77.5%
North Devon	48.5%	83.5%	79.6%	75.2%	77.8%
Devon	50.8%	73.0%	76.3%	70.4%	75.8%
NEW Devon CCG	52.0%	76.1%	78.0%	70.8%	76.5%
Northern Locality	42.4%	75.9%	75.2%	73.7%	75.5%
South West	65.3%	66.5%	72.7%	69.5%	72.2%
England	70.0%	73.3%	74.8%	73.3%	73.4%

CCG figure is Devon County Council component of CCG only

# PERMANENT ADMISSIONS TO CARE HOMES

Permanent admissions to care homes in area per 100,000 population aged 65 and over.



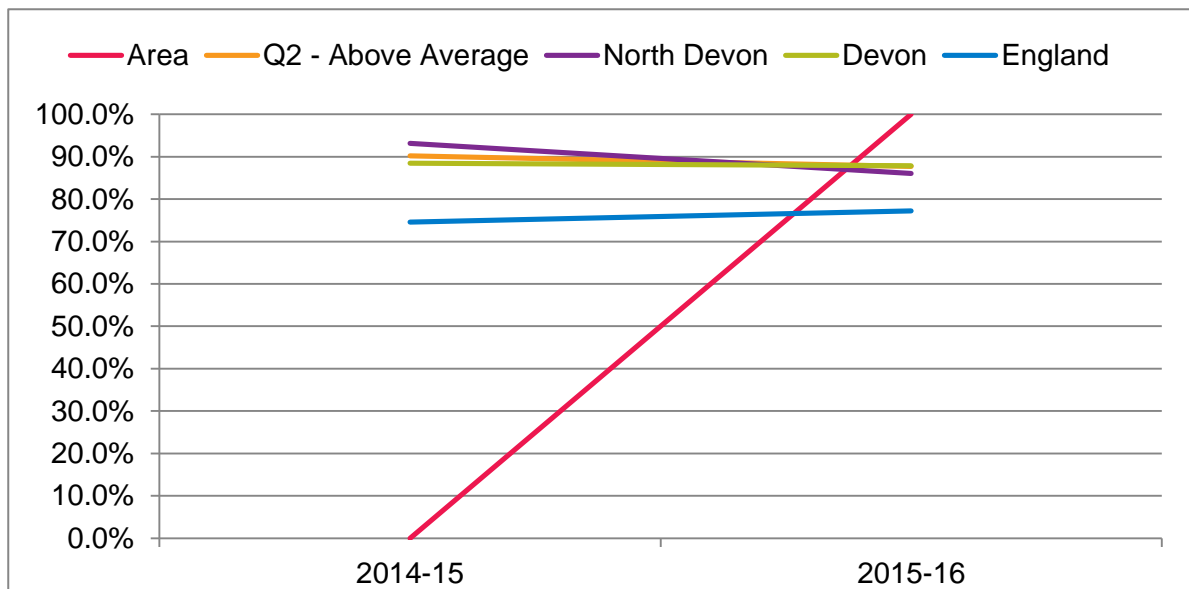
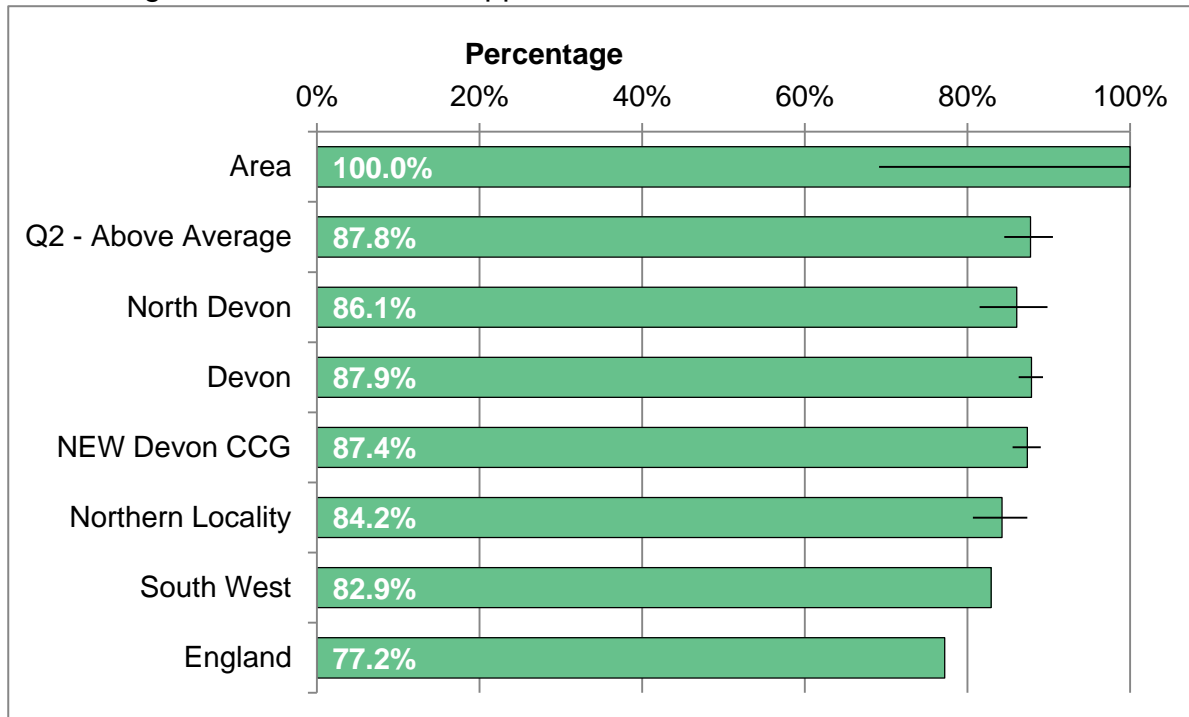
Area	2011-12	2012-13	2013-14	2014-15	2015-16
Number per annum	8	13	#	6	5
Area rate	2373.9	3307.9	#	1449.3	1193.3
Q2 - Above Average	677.2	698.8	647.2	666.1	538.1
North Devon	653.6	802.2	597.7	515.6	475.3
Devon	575.8	571.7	490.6	545.3	448.4
NEW Devon CCG	578.9	585.3	490.5	525.3	433.2
Northern Locality	629.2	709.9	539.9	554.6	470.1
South West	677.7	680.8	656.2	678.2	606.4
England	695.9	697.2	668.4	668.8	628.2

CCG figure is Devon County Council component of CCG only



# OUTCOME OF SHORT-TERM SUPPORT

Percentage of short-term care support that results in no further need for services.



Area	2014-15	2015-16
Number per annum	#	10
Area rate	#	100.0%
Q2 - Above Average	90.2%	87.8%
North Devon	93.2%	86.1%
Devon	88.5%	87.9%
NEW Devon CCG	88.9%	87.4%
Northern Locality	90.8%	84.2%
South West	76.0%	82.9%
England	74.6%	77.2%

CCG figure is Devon County Council component of CCG only

# SOURCES AND DEFINITIONS

## Page 3, Indicator Summary

This summary shows all the main measures within the JSNA profile, showing the value for the area, compared with the local authority district and Devon as a whole. A statistical significance column is also included which identifies if the area is significantly higher (orange shading), significantly lower (blue shading) or not significantly different (grey shading) than the Devon figure. Sources are described in individual indicator definitions below.

## Page 4, 2011 Census Profile

This summary shows measures for the area from the 2011 Census compared with the local authority district, Devon, the South West and England. A statistical significance column is also included as per the indicator summary on page 3. The socio-economic status section shows the percentage of the working-age population in different occupational (occ) groups, The qualifications and students sections shows the percentage of the population with highest level of qualifications for adults, and the percentage of the total population who are full-time (FT) students. For highest level of qualification, level 1 is foundation level, level 2 is GCSEs at grades A\* to C, level 3 is A Level, and level 4 is degree level or above. Household (HH) characteristics highlights features of the household and dwelling, including how many are headed by a lone parent, lack a car or van, along with aspects of occupancy and housing including overcrowding and central heating. Average household size is the number of people in the area divided by the number of households. Housing tenure shows the percentage of household spaces in different forms of ownership. Ethnicity shows the percentage of the total population in different ethnic groups. In the health section, general health is reported on a five point scale from very good to very bad, and this measure shows the percentage of people who rate their health as bad or very bad. The question on long-term illness and disability in the 2011 census asked if people's day-to-day activities were limited because of a health problem or disability which has lasted, or is expected to last at least 12 months, including problems relating to old age. These measures show the percentage limited and the percentage limited a lot both for the total population, and for those aged 16 to 64 only. Finally, caring responsibilities and the time spent on them are recorded, relating to both family members and acquaintances looked after because of long-term physical or mental ill-health/disability, or old age. These measures show the percentage of the total population providing care, and the percentage of the total population who provide care for 50 hours or more.

Source: [www.ons.gov.uk/census/2011census](http://www.ons.gov.uk/census/2011census)

## Page 5, Population

This indicator shows the number and percentage of the population by age group and sex. The population pyramid shows how the population structure of the area relates to the England profile. The trend chart highlights how the population by broad age group has changed over time. The population table shows how the population profile in the area compares to its hierarchy of areas described on page 2. Source is ONS Mid-Year Population Estimates.

Source: <https://www.ons.gov.uk/search?q=population>

# SOURCES AND DEFINITIONS

## Pages 6 to 10, Indices of Deprivation

The 2015 Indices of Deprivation rank areas known as Lower Super Output Areas across England from 1 (most deprived) to 32844 (least deprived) according to the levels of deprivation. The Index of Multiple Deprivation (IMD) is the overall index of deprivation, which produces a score known as the IMD score, and a national rank. Page 6 shows the current IMD score and the trend in the rank over time. The Indices of Deprivation are composed of a number of domains and sub-domains as shown on pages 7 and 8 which compare the rank of the area with the average rank within the district, and the average rank within Devon. The income deprivation domain (page 9) and the employment deprivation domain (page 10) show the percentage of the population on low incomes and involuntary exclusion from employment respectively. The source is the Department for Communities and Local Government.

Source: [www.gov.uk/government/statistics/english-indices-of-deprivation-2015](http://www.gov.uk/government/statistics/english-indices-of-deprivation-2015)

## Page 11, Birth Rate

The birth rate is the total number of live births expressed as a rate per 1,000 females aged between 15 and 44 in the area. The source are the annual births extract from the Health and Social Care Information Centre.

Source: [www.hscic.gov.uk/popbirthdeath](http://www.hscic.gov.uk/popbirthdeath)

## Page 12, Early Help DAF Assessments

The Devon Assessment Framework (DAF) is a process for collecting family information and developing an in-depth plan for children with educational or disability related needs aged 0 to 24. This measure shows the number of assessments undertaken as a percentage of all persons aged 0 to 24 in the area. The source is Devon County Council.

Source: <https://new.devon.gov.uk/send/send-information/how-does-my-child-get-support/>

## Page 13, Children In Need

A child in need is defined under the Children Act 1989 as a child who is unlikely to reach or maintain a satisfactory level of health or development, or their health or development will be significantly impaired without the provision of services, or the child is disabled. This measure is children in need as a percentage of all persons aged 0 to 24. Source is the Annual Children in Need Census.

Source: [https://www.gov.uk/government/uploads/system/uploads/attachment\\_data/file/466133/CIN15-16\\_Guide\\_v1.1\\_web\\_version.pdf](https://www.gov.uk/government/uploads/system/uploads/attachment_data/file/466133/CIN15-16_Guide_v1.1_web_version.pdf)

## Page 14, Safeguarding Enquiries (MASH)

The Devon Multi-Agency Safeguarding Hub (MASH) is the central team responsible for receiving all safeguarding and child protection enquiries in Devon and coordinating the local response to these across services including police, probation, fire, ambulance, health, education and social care. This measure shows the number of enquiries to the MASH as a rate per 1,000 people aged 0 to 17. Source is Devon Multi-Agency Safeguarding Hub.

Source: <https://new.devon.gov.uk/educationandfamilies/child-protection>

# SOURCES AND DEFINITIONS

## **Page 15, English As An Additional Language**

A learner of English as an additional language (EAL) is a pupil whose first language is other than English. First language is the language to which the child was initially exposed to during early development and continues to use this language in the home and community. This measure is the percentage of pupils (primary and secondary) for whom English is an additional language.

Source:

<https://new.devon.gov.uk/supportforschools/administration/school-census>

## **Page 16, Special Educational Needs**

The term 'special educational needs' refers to children who have learning difficulties or disabilities that make it harder for them to learn than most children of the same age. Many children will have special needs of some kind at some time during their education. This measure shows the number of children in any special educational needs category as a percentage of all pupils.

Source:

<https://new.devon.gov.uk/supportforschools/administration/school-census>

## **Page 17, Pupils In Well Rated Schools**

Ofsted inspect and regulate educational services. This involves regular inspections of schools which are classed as four grade scale encompassing excellent, good, requires improvement and inadequate. This measure shows the percentage of primary and secondary school pupils in an area who attend a school rated as good or outstanding.

Source:

<https://new.devon.gov.uk/supportforschools/administration/school-census>

## **Page 18, GCSE Attainment: Five Or More A\*-C including English & Maths**

Number of pupils at end of Key Stage 4 in schools maintained by the local education authority (includes special schools and pupil referral units) achieving five or more GCSEs at grades A\* to C or equivalent, including English and maths GCSE as a percentage of all pupils at end of Key Stage 4.

Source: <https://www.gov.uk/government/collections/statistics-gcses-key-stage-4>

## **Page 19, Not In Education, Employment Or Training**

A 16 to 18 year old is defined as being in education or training if he or she is in full-time education, work based learning (WBL), employer funded training, or other education and training. A 16 to 18 year old is defined as being in employment if he or she is an employee, self-employed, on a WBL programme or an unpaid family worker. Source is the Department for Education.

Source: <https://www.gov.uk/government/collections/statistics-neet>

## **Pages 20 to 25, Working Age Benefit Claimants**

Based on the number of people claiming Department of Work and Pensions (DWP) benefits as a percentage of the total working-age (16 to 64) population. Measures include rates for all benefits (page 20), persons aged 16 to 24 only (page 21), Employment Support Allowance or Incapacity Benefit which relates to poor health (page 22), the carers client group (page 23), the disabled client group (page 24), and Job Seekers Allowance claimants (page 25).

Source: <http://tabulation-tool.dwp.gov.uk/NESS/page1.htm>

# SOURCES AND DEFINITIONS

## Page 26, Fuel Poverty

The percentage of households that experience fuel poverty based on the "Low income, high cost" methodology, where required fuel costs are above the national average, and where spending that amount would be left with a residual income below the official fuel poverty line. The key elements in determining fuel poverty are income, fuel prices and fuel consumption.

Source: <https://www.gov.uk/government/collections/fuel-poverty-sub-regional-statistics>

## Page 27, Health-Related Behaviour Estimates

These local level estimates were derived by applying rates on the levels of health-related behaviours and risk factors from national surveys to local adult populations broken down by age, sex and deprivation. The source of the rates for current smoking, increased or higher risk drinking (21+ units a week for males, 14+ units a week for females), physical inactivity (less than 30 minutes of moderate physical activity per week) and obesity (BMI 30+) was the Health Survey for England.

Sources: <http://www.hscic.gov.uk/healthsurveyengland>

## Page 28, Mental Ill Health Estimates

These local level estimates were derived by applying rates mental health problems from national surveys to local adult populations broken down by age, sex and deprivation. The source of the rates for the modelled self-reported wellbeing estimates is the ONS Annual Population Survey 2011-12. The source of the estimated prevalence figures for mixed anxiety and depression, anxiety and depression is the Adult Psychiatric Morbidity Survey 2014, and the source of the estimated dementia prevalence is the Dementia UK update from 2014.

Sources: <http://apps.opendatacommunities.org/showcase/wellbeing>  
<http://www.hscic.gov.uk/pubs/psychiatricmorbidity07>  
<https://www.alzheimers.org.uk/dementiauk>

## Page 29, Access to Psychological Therapies

Improving Access to Psychological Therapies (IAPT) is an NHS programme rolling out services across England offering interventions approved by the National Institute of Health and Clinical Excellence (NICE) for treating people with depression and anxiety disorders. This measure is an age standardised rate per 100,000 population age 16 and over of referrals to the service.

Source: <http://www.iapt.nhs.uk/>

## Page 30, Use Of Health Services

The availability and use of health services varies considerably by area. This set of charts and tables show the number and percentage of health care admissions and attendances for the area by service used. The services are the four hospitals in Devon, community hospitals and local minor injury units and walk-in centres, providers outside Devon, and in the case of births, home births. The activity types are non-elective or unplanned admissions, elective or planned admissions, urgent care activity (A&E, walk-in centres and minor injuries unit), and births. Sources is the Secondary Uses Service Commissioning dataset.

# SOURCES AND DEFINITIONS

## **Pages 31 to 35, Rates of Admission and Attendance at Hospitals**

Direct age standardised rate of admission or attendance to hospital per 100,000 population. The categories covered are emergency admissions (unplanned admissions to a hospital bed excluding transfers), elective or planned admissions, urgent care activity (A&E, walk-in centres and minor injury unit), accidental falls (admissions with accidental fall ICD10 W0 or W1 in any diagnosis field), and alcohol-related admissions (admissions to hospitals with alcohol-specific cause, or alcohol-related cause using 2014 definitions).

Source: <http://www.hscic.gov.uk/sus>  
<http://www.lape.org.uk/downloads/AlcoholAttributableFractions.pdf>

## **Page 36, Killed Or Seriously Injured On Roads**

The vast majority of road traffic collisions are preventable and can be avoided through improved education, awareness, road infrastructure and vehicle safety. This measure provided the rate of people killed or seriously injured on the roads per 100,000 resident population.

Source: <https://www.gov.uk/government/collections/road-accidents-and-safety-statistics>

## **Pages 37 and 38, Life Expectancy**

Life expectancy is the average number of years a person would expect to live based on contemporary mortality rates. For a particular area and time period, it is an estimate of the average number of years a newborn baby would survive if he or she experienced the age-specific mortality rates for that area and time period throughout his or her life.

## **Page 39, Learning Disability Accommodation**

The proportion of all adults with a learning disability known to the council who are recorded as living in their own home or with their family. The definition of individuals 'known to the council' is currently restricted to those adults with a learning disability (with a primary client group of LD) who have been or should have been assessed or reviewed during the year.

Source: <http://ascof.hscic.gov.uk/>

## **Page 40, Permanent Admissions To Care Homes**

Number of permanent admissions to residential and nursing care homes in the area per 100,000 population aged 65 and over. People counted as a permanent admission include residents where the local authority makes any contribution to the costs of care, and registered care homes for nursing care.

Source: <http://ascof.hscic.gov.uk/>

## **Page 41, Outcome Of Short-Term Support**

The aim of short-term services is to re-able people and promote their independence. This measure covers the proportion of new adult social care service users receiving a short-term servicing during the year for whom the outcome of the service was either no ongoing support or support at a lower level. The source is the Adult Social Care Outcomes Framework.

Source: <http://ascof.hscic.gov.uk/>

# SOURCES AND DEFINITIONS

## GLOSSARY OF TERMS

### **Crude Rate**

A crude rate is the number of cases in an area per head of population.

### **Direct Age Standardised Rate (DASR)**

An age-adjusted rate which shows the rate that would have occurred if the observed age-specific rates had occurred in a standard population.

### **Confidence Interval**

A confidence interval is a statistical range which indicates the level of uncertainty around a particular figure, as seen in the whisker lines on charts.

### **Statistical Significance**

The likelihood that a result or relationship is caused by something other than random chance.

### **Life Expectancy**

The average period that a person may expect to live. This is represented as a figure 'at birth', and as figures for life expectancy from a defined age.

## GEOGRAPHIC AREAS

This section describes the geographic areas available within the JSNA profiles

**Lower Super Output Areas (LSOAs)** are areas defined by the Office for National Statistics for the release of small area data. There are 457 in Devon.

**Middle Super Output Areas (MSOAs)** are groupings of LSOAs agreed by the local authority and the Office for National Statistics. There are 107 in Devon.

**Wards** are areas covered by Councillors within Devon's eight local authority districts. There are 202 in Devon.

**Electoral Divisions** are areas covered by Devon County Council Councillors. There are 62 in Devon.

**Devon Towns** are locally defined areas for the main market and coastal towns in Devon and the rural areas surrounding them. There are 29 in Devon.

**Districts** are lower tier local authority districts, responsible for housing, environmental health, waste collection, council tax collection, local planning and licensing. There are eight in Devon.

**Clinical Commissioning Group Sub-Localities** are local groupings of GP practices and NHS teams which coordinate care. There are nine in Devon.