

DEVON HEALTH AND WELLBEING OUTCOMES REPORT

Priority 4: Strong and Supportive Communities

Indicator: Stable/Appropriate Accommodation (Learning Dis.)

Period: 2016-17

RAG Rating

Green

A Amber

Red

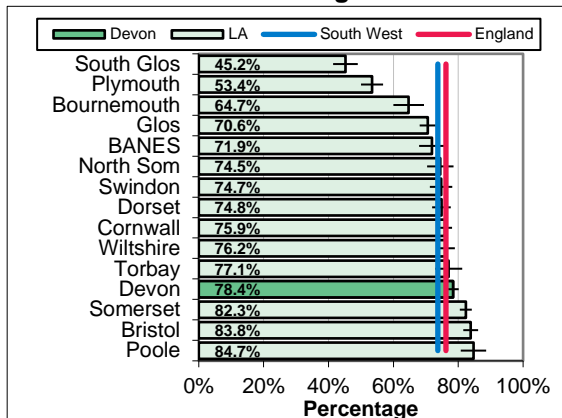
Overview

The nature of accommodation for people with learning disabilities has a strong impact on their safety and overall quality of life and the risk of social exclusion. In 2016-17 78.4% of adults with a learning disability in Devon (known to the council) were living in their own home or with their family, compared with 73.7% in the South West, 75.9% in the local authority comparator group and 76.2% nationally.

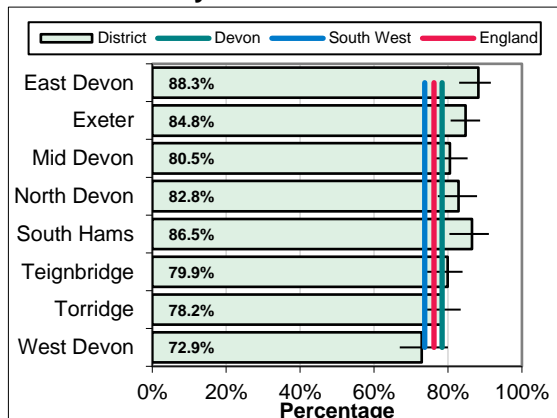
Equalities

A higher proportion of younger adults (18-30) with a learning disability are in stable and suitable accommodation in Devon, compared to 31-64 year olds.

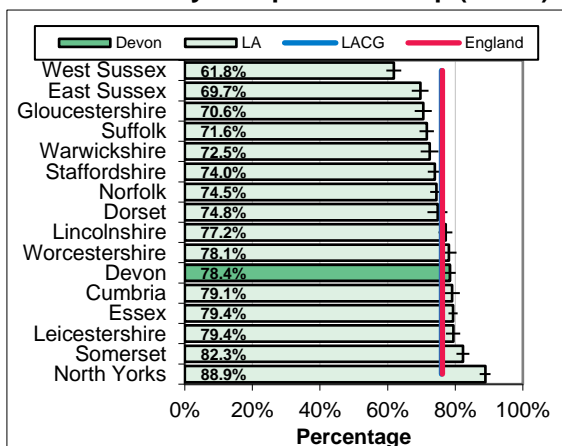
South West Benchmarking



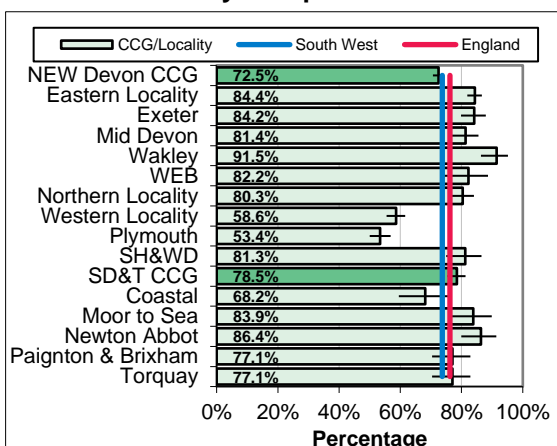
Local Authority District



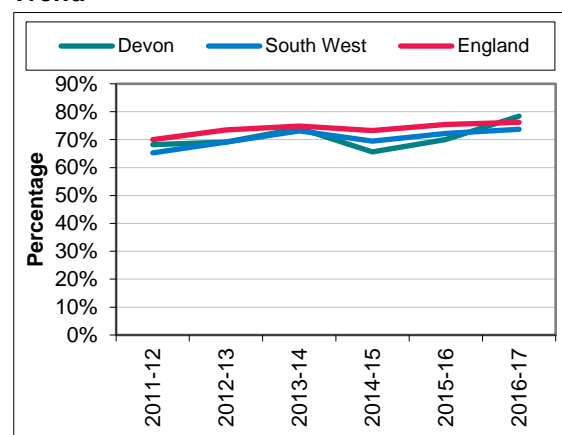
Local Authority Comparator Group (LACG)



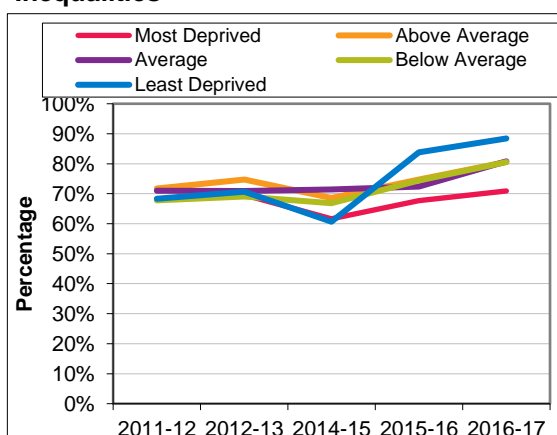
CCG and Locality Comparison



Trend



Inequalities



DEVON HEALTH AND WELLBEING OUTCOMES REPORT

INDICATOR SPECIFICATION

Priority 4: Strong and Supportive Communities

Indicator: Stable/Appropriate Accommodation (Learning Dis.)

Period: 2016-17

Description	Proportion of adults with a learning disability who live in their own home or with their family.
Source	Adult Social Care Combined Activity Return. National Adult Social Care Intelligence Service (SW Benchmarking, Trend and Comparator Group) DCC Management Information Team (District, Inequalities and CCG / Locality Comparison)
Update Frequency	Annually around seven months in arrears, 2017-18 due in October 2018.
Outcomes Framework	Adult Social Care Outcomes Framework Indicator 1G, Public Health Outcomes Framework Indicator 1.6
Detailed Specification	The proportion of all adults with a learning disability who are known to the council, who are recorded as living in their own home or with their family. The definition of individuals 'known to the council' is currently restricted to those adults with a learning disability (with a primary client group of LD) who have been assessed or reviewed by the council during the year (irrespective of whether or not they receive a service) or who should have been reviewed but were not.
Chart Notes South West	Compares Upper Tier / Unitary Local Authorities in the South West Region. Error bar is 95% confidence interval.
Chart Notes Local Authority	Compares Local Authority Districts in the Devon County Council area. Error bar is 95% confidence interval.
Chart Notes Comparator	Compares Devon to similar upper tier / unitary local authorities using the 15 closest comparator councils from the Institute of Public Finance (IPF) statistical neighbours for 2015. Error bar is 95% confidence interval.
Chart Notes CCG/Locality	Rates are not currently available at a Clinical Commissioning Group and locality level.
Chart Notes Trend	Compares Devon rate with South West region and England over time.
Chart Notes Inequalities	Compares areas within Devon based on area deprivation. National deprivation quintiles from the 2015 Indices of Deprivation (Index of Multiple Deprivation) used.