

PUBLIC HEALTH DEVON OUTCOMES REPORT

Domain 4. Healthcare Public Health

Indicator 4.03 Mortality Rate from preventable causes

Period: 2014-2016

UPDATED INDICATOR

RAG Rating

G Green

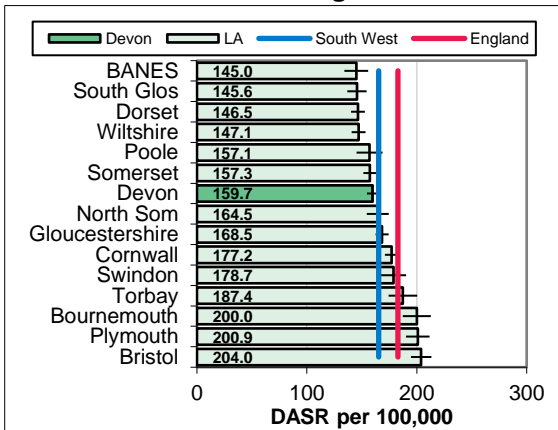
Amber

Red

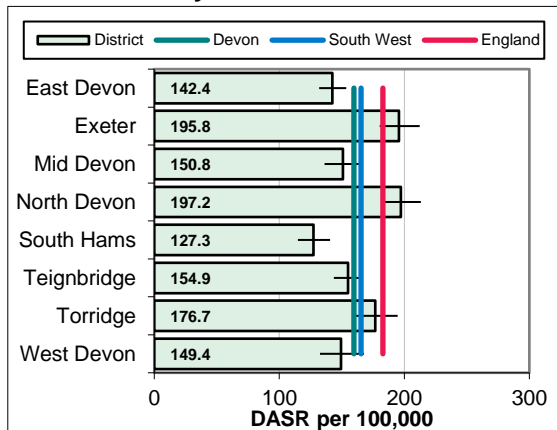
Overview
The mortality rate from causes considered preventable in Devon is 159.7 per 100,000, which is significantly below the South West (165.4), local authority comparator group (164.7) and England (183.0) rates. Within Devon rates were highest in North Devon (197.2) and lowest in the South Hams (127.3). The rate has fallen over time from 204.5 in 2001-03 to 159.7 in 2014-16, with the rate of decline slowing in recent years.

Equalities
Mortality rates from preventable causes tend to be higher in males than females. Preventable mortality rates are higher in more deprived areas across all age groups.

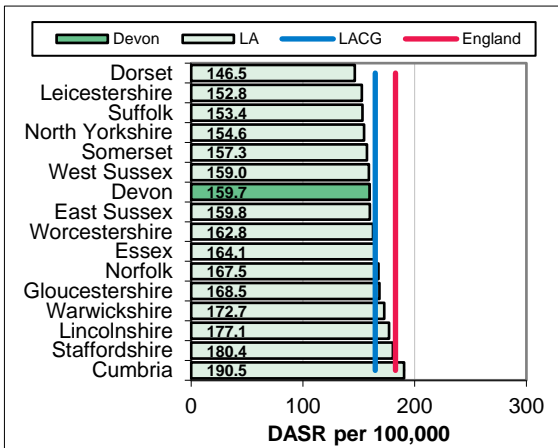
South West Benchmarking



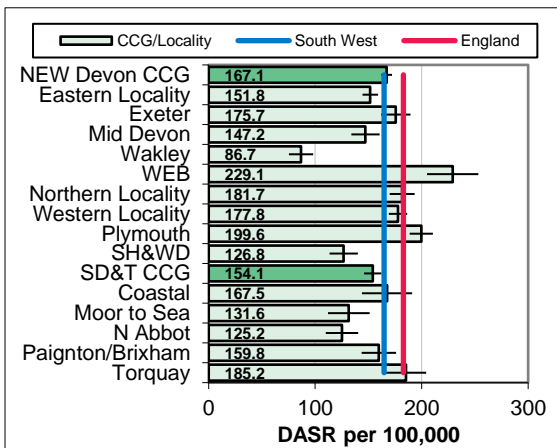
Local Authority District



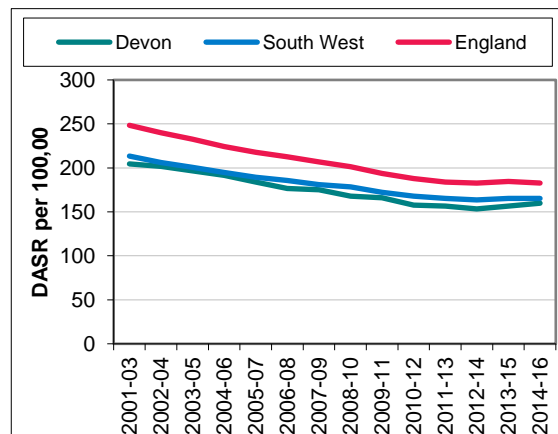
Local Authority Comparator Group



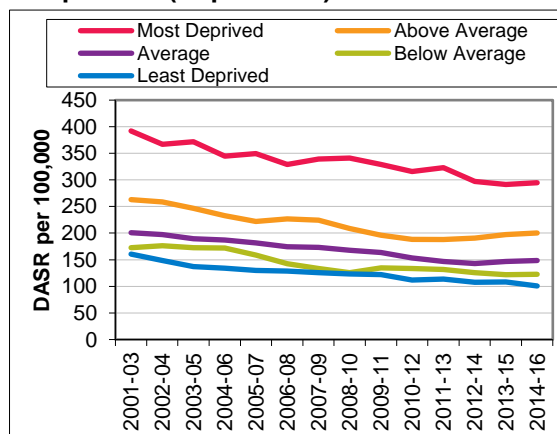
CCG and Locality Comparison



Trend



Inequalities (Deprivation)



PUBLIC HEALTH DEVON OUTCOMES REPORT INDICATOR SPECIFICATION

Domain 4. Healthcare Public Health

Indicator 4.03 Mortality Rate from preventable causes

Period: 2014-2016

Description	Direct age-standardised mortality rate from causes considered preventable per 100,000 population
Source	Office for National Statistics annual death extracts (South West Benchmarking, Local Authority District, Trend and Local Authority Comparator Group). Devon Public Health Intelligence Team (Inequalities and CCG / Locality Comparison)
Update Frequency	Annual, 2017 data due autumn 2018
Outcomes Framework	Public Health Outcomes Framework Indicator 4.03
Detailed Specification	Numerator is number of deaths that are considered preventable (classified by underlying cause of death recorded as ICD codes A15-A19, B17.1, B18.2, B20-B24, B90, C00-C16, C18-C22, C33-C34, C43, C45, C50, C53, E10-E14, F10-F16, F18-F19, G31.2, G62.1, I20-I26, I42.6, I71, I80.1-I80.3, I80.9, I82.9, J09-J11, J40-J44, K29.2, K70, K73-K74 (excl. K74.3-K74.5), K86.0, U50.9, V01-Y34, Y60-Y69, Y83-Y84) registered in the respective calendar years, aggregated into quinary age bands (0-4, 5-9, ..., 80-84, 85+). The 2013 revision to the European Standard Population has been used for this measure.
Chart Notes South West	Compares Upper Tier / Unitary Local Authorities in the South West Region. Error bar is 95% confidence interval.
Chart Notes Local Authority	Rates cannot currently be calculated at a local authority district level.
Chart Notes Comparator	Compares Devon to similar upper tier / unitary local authorities using the 15 closest comparator councils from the Institute of Public Finance (IPF) statistical neighbours. Error bar is 95% confidence interval.
Chart Notes CCG/Locality	Displays rates for the two Clinical Commissioning Groups in the wider Devon area, their localities, and their sub-localities. This is based on the geographic areas defined at Lower Super Output Area level www.devonhealthandwellbeing.org.uk/library/maps . Error bar is 95% confidence
Chart Notes Trend	Compares Devon rate with South West region and England over time.
Chart Notes Inequalities	Compares areas within Devon based on local GP practice deprivation quintiles. Calculated using the 2010 Indices of Deprivation (Index of Multiple Deprivation).