

DEVON HEALTH AND WELLBEING OUTCOMES REPORT

Priority 4: Strong and Supportive Communities

Indicator: Rough sleeping rate per 1,000 households

Period: 2017

RAG Rating

	Green
A	Amber
	Red

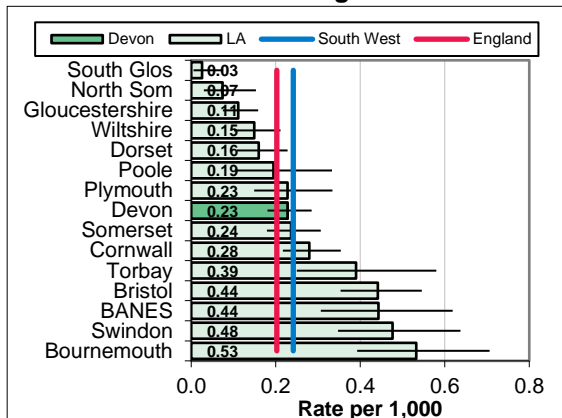
Overview

The 2017 rough sleeping counts estimated that 78 people were sleeping rough in Devon in Autumn 2017. The rate per 1,000 households in Devon (0.23), the local authority comparator group (0.16) and England (0.20) rates, and broadly in line with the South West rate (0.24). Within Devon rates are highest in Exeter (0.65 based on an estimate of 35), and North Devon (0.39 based on a count of 20).

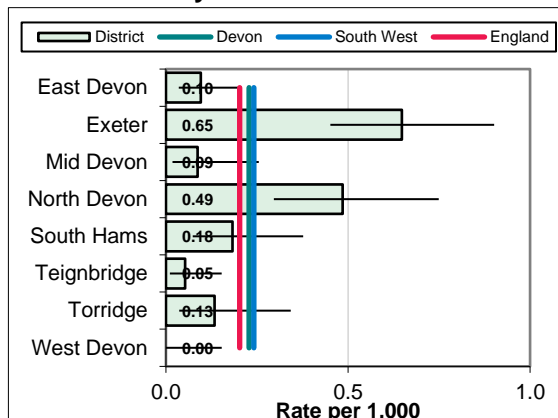
Equalities

Levels of rough sleeping are higher in urban and town locations in Devon with the highest levels in Exeter, Barnstaple and Totnes. Risk factors associated with becoming a rough sleeper include trauma, complex mental health needs, substance misuse, and family breakdown. Males are more likely to be rough sleepers than females, with higher rates by age in those aged 25 to 45.

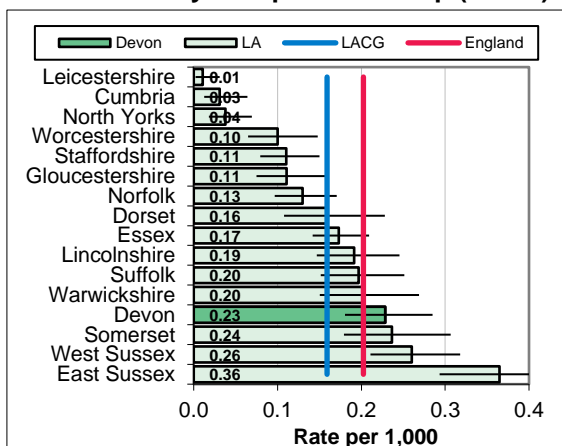
South West Benchmarking



Local Authority District



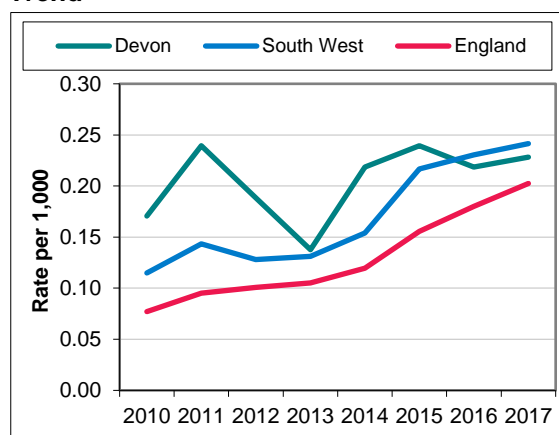
Local Authority Comparator Group (LACG)



CCG and Locality Comparison

NOT CURRENTLY AVAILABLE AT CCG / LOCALITY LEVEL

Trend



Inequalities

NOT CURRENTLY AVAILABLE AT A LOCAL LEVEL

DEVON HEALTH AND WELLBEING OUTCOMES REPORT

INDICATOR SPECIFICATION

Priority 4: Strong and Supportive Communities

Indicator: Rough sleeping rate per 1,000 households

Period: 2017

Description	The number of rough sleepers counted or estimated by the local authority as a rate per 1,000 households
Source	Department of Communities and Local Government (DCLG) Rough sleeping returns (annual)
Update Frequency	Annual, 2018 figures due February 2019
Outcomes Framework	Not applicable
Detailed Specification	These annual rough sleeping counts and estimates are carried out in October or November. Each local authority district either conducts a street count or provides an estimate. A count is a single night snapshot of the number of rough sleepers in a local authority area. Counts are independently verified by Homeless Link. An estimate is the number of people thought to be sleeping rough in a local authority area on any one night in a chosen week. Local authorities decide annually whether to provide a count or an estimate in light of their local circumstances. Counts and estimates may underestimate the true extent of rough sleeping.
Chart Notes South West	Compares Upper Tier / Unitary Local Authorities in the South West Region. Error bar is 95% confidence interval.
Chart Notes Local Authority	Compares Local Authority Districts in the Devon County Council area. Error bar is 95% confidence interval.
Chart Notes Comparator	Compares Devon to similar upper tier / unitary local authorities using the 15 closest comparator councils from the Institute of Public Finance (IPF) statistical neighbours for 2015. Error bar is 95% confidence interval.
Chart Notes CCG/Locality	Rates are not currently available at a Clinical Commissioning Group and locality level.
Chart Notes Trend	Compares Devon rate with South West region and England over time.
Chart Notes Inequalities	Rates cannot currently be calculated at a local level.