

PUBLIC HEALTH DEVON OUTCOMES REPORT

Domain 2. Health Improvement

Indicator 2.19 Cancer Diagnosed at Stage One and Two

Period: 2015

RAG Rating

G Green

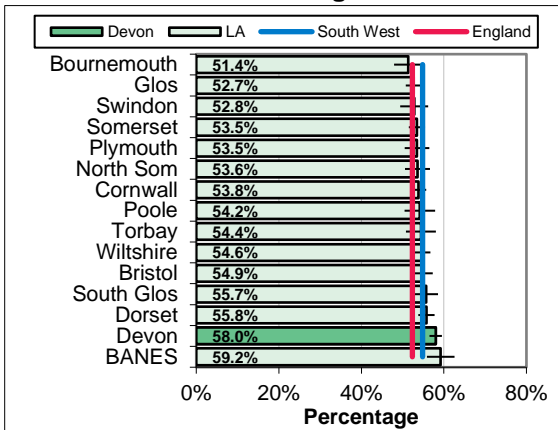
Amber

Red

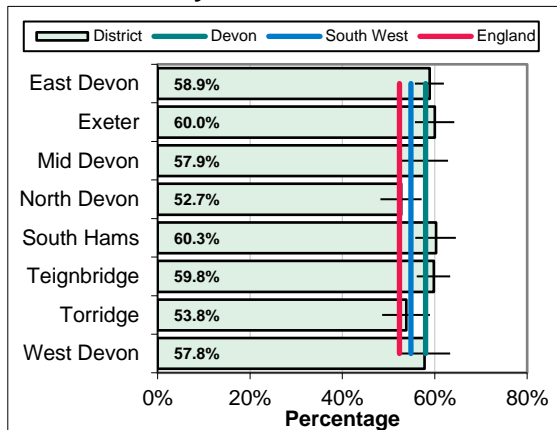
Overview
In 2015, 58.0% of diagnoses for selected cancers were diagnosed at an early stage (one or two). This compares to 54.8% for the South West, 53.1% for the local authority comparator group and 52.3% for England. Within Devon the highest rates were seen in the South Hams (60.3%). These are experimental statistics, with poorer data quality in some areas meaning data are not available. Differences between areas may relate to better coding as well as earlier diagnosis.

Equalities
Breakdowns by equality characteristics are not yet available for this indicator.

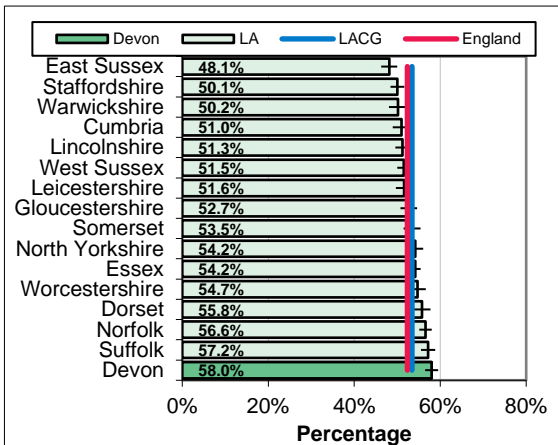
South West Benchmarking



Local Authority District



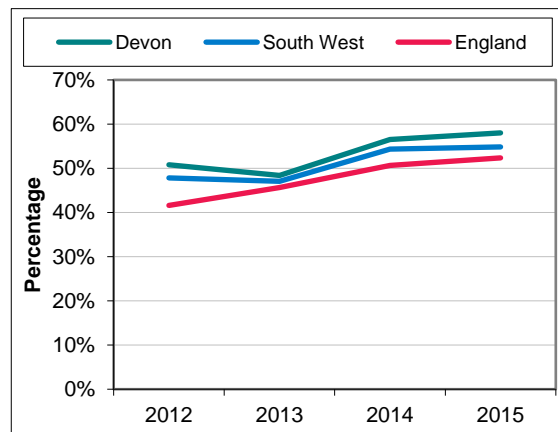
Local Authority Comparator Group



CCG and Locality Comparison

NOT CURRENTLY AVAILABLE AT CCG / LOCALITY LEVEL

Trend



Inequalities

NOT CURRENTLY AVAILABLE AT A LOCAL LEVEL

PUBLIC HEALTH DEVON OUTCOMES REPORT INDICATOR SPECIFICATION

Domain 2. Health Improvement

Indicator 2.19 Cancer Diagnosed at Stage One and Two

Period: 2015

Description	The proportion of invasive malignancies of breast, prostate, colorectal, lung, bladder, kidney, ovary and uterus, non-Hodgkin lymphomas, and melanomas of skin, diagnosed at stage 1 or 2.
Source	National Cancer Registry, Public Health England
Update Frequency	Annual, around 17 months in arrears
Outcomes Framework	Public Health Outcomes Framework Indicator 2.19
Detailed Specification	New cases of cancer diagnosed at stage 1 and 2 as a proportion of all new cases of cancer diagnosed (specific cancer sites, morphologies and behaviour: invasive malignancies of breast, prostate, colorectal, lung, bladder, kidney, ovary, uterus, non-Hodgkin lymphomas, and invasive melanomas of skin). This indicator is labelled as experimental statistics because of the variation in data quality: the indicator values primarily represent variation in completeness of staging information.
Chart Notes South West	Compares Upper Tier / Unitary Local Authorities in the South West Region. Error bar is 95% confidence interval.
Chart Notes Local Authority	Compares Local Authority Districts in the Devon County Council area. Error bar is 95% confidence interval.
Chart Notes Comparator	Compares Devon to similar upper tier / unitary local authorities using the 15 closest comparator councils from the Institute of Public Finance (IPF) statistical neighbours. Error bar is 95% confidence interval.
Chart Notes CCG/Locality	Rates are not currently available at a Clinical Commissioning Group and locality level.
Chart Notes Trend	Trend data not currently available.
Chart Notes Inequalities	Figures are not currently available for an inequalities analysis at a local level.