

DEVON JSNA COMMUNITY PROFILE 2017

COMMUNITY HEALTH AND SOCIAL CARE TEAM BASED

Bideford and Northam CHSCT

| | |
|--------------------------|--|
| Description | Community Health and Social Care Team in Devon |
| Deprivation Group | Q3 - Average |
| District | Torrington |
| County | Devon |
| CCG | NEW Devon CCG |
| CCG Locality | Northern Locality |



| | |
|-------------------------|---|
| Last updated: | June 2017 |
| Queries to: | maria.moloney-lucey@devon.gov.uk |
| Next update due: | June 2018 |
| Author: | Maria Lucey, Senior Public Health Analyst, Devon County Council |
| Contributors: | Julie Ashall, Melanie Burke, Carla Calzavacca, Eddie Smith, Louise Hann, Mark Painter, Ian Poole, Caroline Smith, Simon Chant (Devon County Council), Suzie Winter (Babcock LDP), Ben Johnson (NEW Devon CCG), Andy Tellham (Careers South West), Sue Rook and Christine Cherop (Devon Partnership Trust) |

ABOUT THESE PROFILES

OVERVIEW

This is the Devon Joint Strategic Needs Assessment (JSNA) Community Profile for Bideford and Northam CHSCT.

The aim of the JSNA is to collaboratively identify current and future health and wellbeing needs to inform future service planning and delivery. This profile contains a range of socio-economic, health, care and wellbeing related data, which provide a detailed assessment of current need and service activity at a local level. In addition to data relating to Bideford and Northam CHSCT, information is provided for the hierarchy that the area is within as set out at the top of page 1:

Deprivation Group - based on the area's rank nationally in the Index of Multiple Deprivation 2015
 District - based on local authority district
 County - based on administrative county
 CCG hierarchy - based on CCG (Clinical Commissioning Group), locality and sub-locality of residence

This profile shows the current position of Bideford and Northam CHSCT relative to this hierarchy both for the current year and historically. This report was created by the Devon Public Health Intelligence Team with assistance from the contributors listed on page 1.

This report contains indicators on population, deprivation, children and young people, uptake of benefits, health-related behaviour, and health and care activity and outcomes. Page contents are set out to the right. Information on sources and definitions are provided on page 42. Except for modelled data, rates are not available for counts of less than five. These are marked with a '#'.

CONTENTS

| Page | Section |
|------|--|
| 3 | Indicator Summary |
| 4 | 2011 Census Profile |
| 5 | Population |
| 6 | Index Of Multiple Deprivation |
| 7 | Indices Of Deprivation Domains |
| 8 | Indices Of Deprivation Sub-Domains |
| 9 | Income Deprivation |
| 10 | Employment Deprivation |
| 11 | Birth Rate |
| 12 | Early Help DAF Assessments |
| 13 | Children In Need |
| 14 | Safeguarding Enquiries (MASH) |
| 15 | English As An Additional Language |
| 16 | Special Educational Needs |
| 17 | Pupils In Well Rated Schools |
| 18 | GCSE Attainment: Five or More A*-C |
| 19 | Not In Education, Employment Or Training |
| 20 | Working Age Benefit Claimant Rate |
| 21 | Aged 16 To 24 Benefit Claimant Rate |
| 22 | ESA or Incapacity Benefit Claimant Rate |
| 23 | Carers Working Age Client Group |
| 24 | Disabled Working Age Client Group |
| 25 | Jobseekers Allowance Claimant Rate |
| 26 | Fuel Poverty |
| 27 | Health-Related Behaviour Estimates |
| 28 | Mental Ill Health Estimates |
| 29 | Access to Psychological Therapies |
| 30 | Use of Health Services |
| 31 | Emergency Admissions |
| 32 | Elective Admissions |
| 33 | Urgent Care Attendances |
| 34 | Accidental Falls Admissions |
| 35 | Alcohol-Related Admissions |
| 36 | Killed Or Seriously Injured On Roads |
| 37 | Life Expectancy at Birth |
| 38 | Life Expectancy at Age 65 |
| 39 | Learning Disability Accommodation |
| 40 | Permanent Admissions to Care Homes |
| 41 | Outcome of Short-Term Support |
| 42 | Sources and Definitions |

JSNA Profiles Home Page: www.devonhealthandwellbeing.org.uk/jsna/profiles

'Better Together' Community Performance summaries for Devon towns:
<https://new.devon.gov.uk/factsandfigures/performance/community-performance/>

INDICATOR SUMMARY

This summary displays all the main measures within the JSNA profile, showing the value for the area compared with the local authority district and Devon as a whole. A statistical significance column is also included which identifies is the area is significantly higher (orange shading), significantly lower (blue shading), or not

| Measure | Area | Sig* | District | Devon | Chart | Trend |
|---------------------------------|---------|------|----------|---------|-------|-------|
| Total Population | 43871 | N/A | - | - | - | |
| 0-15 Population | 16.4% | | 16.4% | 16.3% | | |
| 16-64 Population | 56.8% | | 57.5% | 59.2% | | |
| 65-84 Population | 23.2% | | 22.9% | 21.0% | | |
| 85+ Population | 3.5% | | 3.2% | 3.6% | | |
| IMD 2015 Score | 20.92 | N/A | 23.20 | 17.09 | | |
| Income Deprivation | 13.6% | | 13.3% | 10.8% | | |
| Employment Deprivation | 12.9% | | 12.1% | 9.5% | | |
| Birth Rate | 65.0 | | 62.9 | 58.5 | | |
| Early Help DAF Assessments | 1.3% | | 1.4% | 0.8% | | - |
| Children in Need | 2.8% | | 2.6% | 2.7% | | |
| MASH Enquiries | 244.0 | | 225.8 | 189.6 | | |
| English = Second Language | 1.6% | | 1.3% | 3.9% | | |
| Special Educational Needs | 19.1% | | 20.1% | 17.0% | | |
| Pupils in Well Rated Schools | 71.5% | | 80.4% | 89.2% | | |
| GCSEs: Five or more A*-C | 56.3% | | 58.2% | 64.8% | | |
| NEETS aged 16 to 18 | 7.5% | | 7.5% | 7.3% | | |
| Working Age Benefits | 12.4% | | 11.9% | 9.6% | | |
| Benefit Claimants 16 to 24 | 9.4% | | 8.7% | 6.3% | | |
| ESA / Incapacity Benefit | 6.8% | | 6.4% | 5.3% | | |
| Benefit Clients: Carers | 2.0% | | 2.0% | 1.5% | | |
| Benefit Clients: Disabled | 1.2% | | 1.2% | 1.1% | | |
| Job Seekers Allowance | 1.4% | | 1.3% | 0.9% | | |
| Fuel Poverty | 10.7% | | 15.0% | 13.0% | | |
| Psychological Therapies | 2420.7 | | 2227.4 | 2014.1 | | - |
| Emergency Admissions | 7640.8 | | 7428.0 | 7215.3 | | |
| Elective Admissions | 12379.3 | | 12928.5 | 14005.4 | | |
| Urgent Care Attendances | 33675.7 | | 31151.8 | 31899.6 | | |
| Accidental Fall Admissions | 410.5 | | 399.2 | 366.3 | | |
| Alcohol-Related Admissions | 673.4 | | 629.6 | 548.5 | | |
| Roads: Killed/Seriously Injured | 38.8 | | 44.4 | 45.7 | | |
| Life Expectancy at Birth | 81.5 | | 81.5 | 82.4 | | |
| Life Expectancy at Age 65 | 20.5 | | 20.1 | 20.8 | | |
| LD Supported Accommodation | 75.7% | | 73.5% | 75.8% | | |
| Care Home Admissions | 417.6 | | 463.1 | 448.4 | | |
| Effective Short-Term Support | 81.9% | | 81.5% | 87.9% | | |

* Statistical Significance vs Devon
Rate not available (small numbers)

N/A Significance not available / calculable
 Significantly higher
 Significantly lower
 No significant difference

2011 CENSUS PROFILE

| | Measure | Area n | Area rate | Sig* | District | Devon | SW | England |
|--------------------------------|----------------------|--------|-----------|-------|----------|--------|--------|---------|
| Socio-Economic Classification | Higher Managerial | 2082 | 6.77% | | 6.54% | 9.57% | 10.24% | 10.41% |
| | Lower Managerial | 6187 | 20.13% | | 19.11% | 21.71% | 21.63% | 20.92% |
| | Intermediate Occs | 3546 | 11.54% | | 10.65% | 12.14% | 12.78% | 12.79% |
| | Small Employers | 4036 | 13.13% | | 17.80% | 14.22% | 11.29% | 9.42% |
| | Technical Occs | 2639 | 8.58% | | 8.00% | 7.07% | 7.30% | 6.88% |
| | Semi-Routine Occs | 5718 | 18.60% | | 17.43% | 14.80% | 14.82% | 13.97% |
| | Routine Occs | 3901 | 12.69% | | 12.01% | 10.17% | 10.57% | 11.00% |
| | Never worked | 1166 | 3.79% | | 3.63% | 2.91% | 3.42% | 5.61% |
| | Not Classified | 1466 | 4.77% | | 4.83% | 7.40% | 7.95% | 9.01% |
| Qualifications and Students | No Qualifications | 8956 | 25.15% | | 25.41% | 21.14% | 20.70% | 22.46% |
| | Level 1 Quals | 4999 | 14.04% | | 14.25% | 13.29% | 13.60% | 13.29% |
| | Level 2 Quals | 6150 | 17.27% | | 17.48% | 16.45% | 16.38% | 15.22% |
| | Apprenticeship | 1886 | 5.30% | | 4.92% | 4.16% | 4.28% | 3.57% |
| | Level 3 Quals | 4419 | 12.41% | | 12.07% | 12.90% | 13.19% | 12.35% |
| | Level 4+ Quals | 7753 | 21.77% | | 21.67% | 27.76% | 27.37% | 27.38% |
| | Other Quals | 1444 | 4.06% | | 4.20% | 4.29% | 4.47% | 5.73% |
| | FT Students 16-17 | 800 | 2.25% | | 2.50% | 2.45% | 2.60% | 2.71% |
| | FT Students 18+ | 669 | 1.88% | | 1.73% | 3.99% | 4.45% | 5.46% |
| Household (HH) Characteristics | Lone Parent HH | 1609 | 8.43% | | 7.81% | 8.15% | 8.86% | 10.61% |
| | No Car or Van HH | 3623 | 18.99% | | 16.27% | 17.38% | 25.80% | 18.90% |
| | Shared Dwellings | 6 | 0.03% | | 0.02% | 0.02% | 0.03% | 0.03% |
| | No usual resident | 1665 | 8.03% | | 8.93% | 7.81% | 4.26% | 5.97% |
| | Has second address | 1622 | 3.80% | | 3.89% | 5.73% | 5.72% | 5.17% |
| | Communal Est Pop | 636 | 1.49% | | 1.49% | 2.50% | 2.15% | 1.80% |
| | Overcrowding | 755 | 3.96% | | 3.71% | 4.96% | 6.39% | 8.74% |
| | No central heating | 847 | 4.44% | | 6.42% | 5.11% | 3.64% | 2.69% |
| | Average HH Size | - | 2.2 | N/A | 2.2 | 2.3 | 2.3 | 2.4 |
| Housing Tenure | Owner Occupied | 13595 | 71.25% | | 71.46% | 70.19% | 63.34% | 67.43% |
| | Shared Ownership | 197 | 1.03% | | 0.70% | 0.81% | 0.79% | 0.76% |
| | Social Rented | 1887 | 9.89% | | 9.02% | 11.18% | 17.69% | 13.31% |
| | Private Rented | 3138 | 16.44% | | 16.96% | 16.29% | 16.84% | 17.09% |
| | Living Rent Free | 265 | 1.39% | | 1.86% | 1.53% | 1.34% | 1.41% |
| Ethnicity | White British | 41367 | 96.92% | | 97.10% | 94.93% | 91.81% | 79.75% |
| | White Other | 674 | 1.58% | | 1.62% | 2.61% | 3.61% | 5.66% |
| | Mixed | 340 | 0.80% | | 0.67% | 0.87% | 1.36% | 2.25% |
| | Asian | 214 | 0.50% | | 0.42% | 1.17% | 2.00% | 7.82% |
| | Black | 39 | 0.09% | | 0.08% | 0.19% | 0.94% | 3.48% |
| | Other Ethnic Group | 46 | 0.11% | | 0.10% | 0.23% | 0.30% | 1.03% |
| Health | Health Bad/V Bad | 2801 | 6.56% | | 6.21% | 5.20% | 5.15% | 5.49% |
| | Limited | 9222 | 21.61% | | 21.05% | 19.45% | 18.41% | 17.64% |
| | Limited a Lot | 4295 | 10.06% | | 9.58% | 8.55% | 8.26% | 8.31% |
| | Limited, 16-64 | 3731 | 8.74% | | 8.76% | 7.74% | 7.87% | 8.26% |
| | Limited a Lot, 16-64 | 1652 | 3.87% | | 3.82% | 3.16% | 3.28% | 3.63% |
| | Provides Care | 5146 | 12.06% | | 11.92% | 11.37% | 10.78% | 10.24% |
| Provides Care 50hr+ | 1221 | 2.86% | | 2.79% | 2.48% | 2.37% | 2.37% | |

* Statistical Significance vs Devon

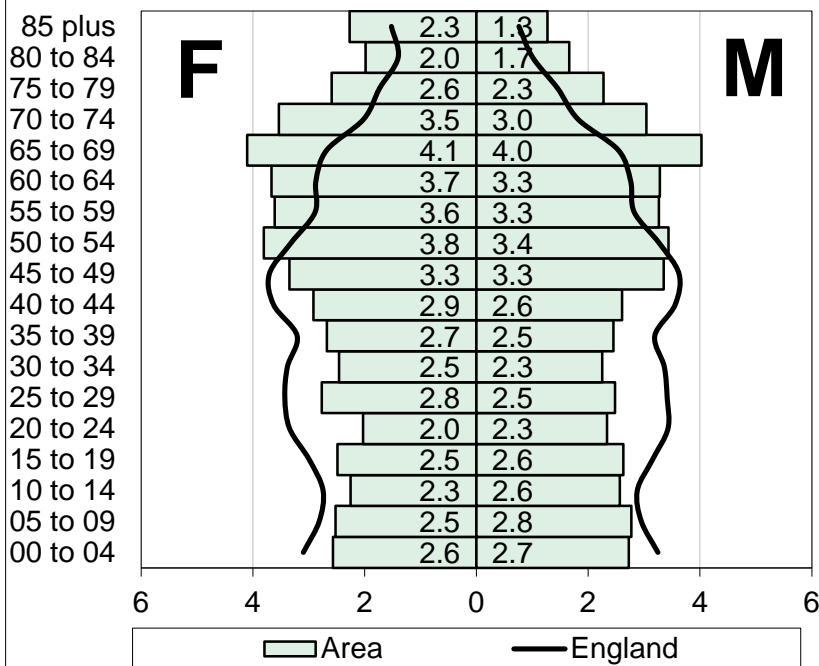
Rate not available (small numbers)

| | |
|-----|---|
| N/A | Significance not available / calculable |
| | Significantly higher |
| | Significantly lower |
| | No significant difference |

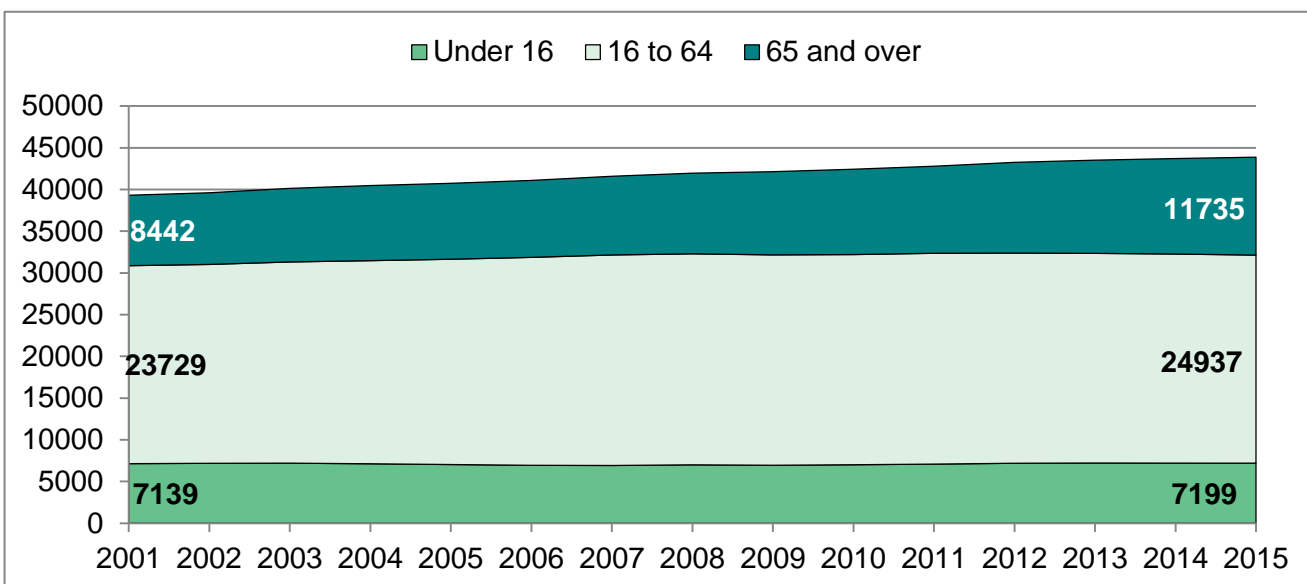
POPULATION

POPULATION PYRAMID

AREA vs NATIONAL PROFILE, 2015



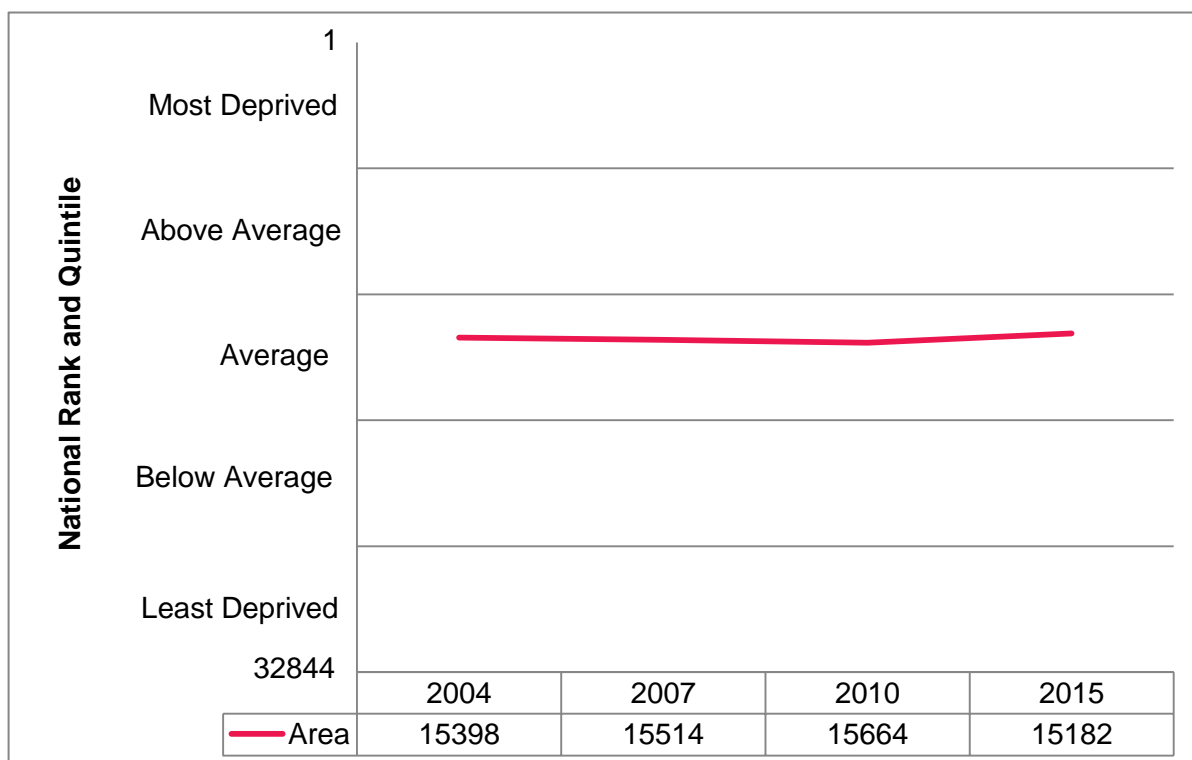
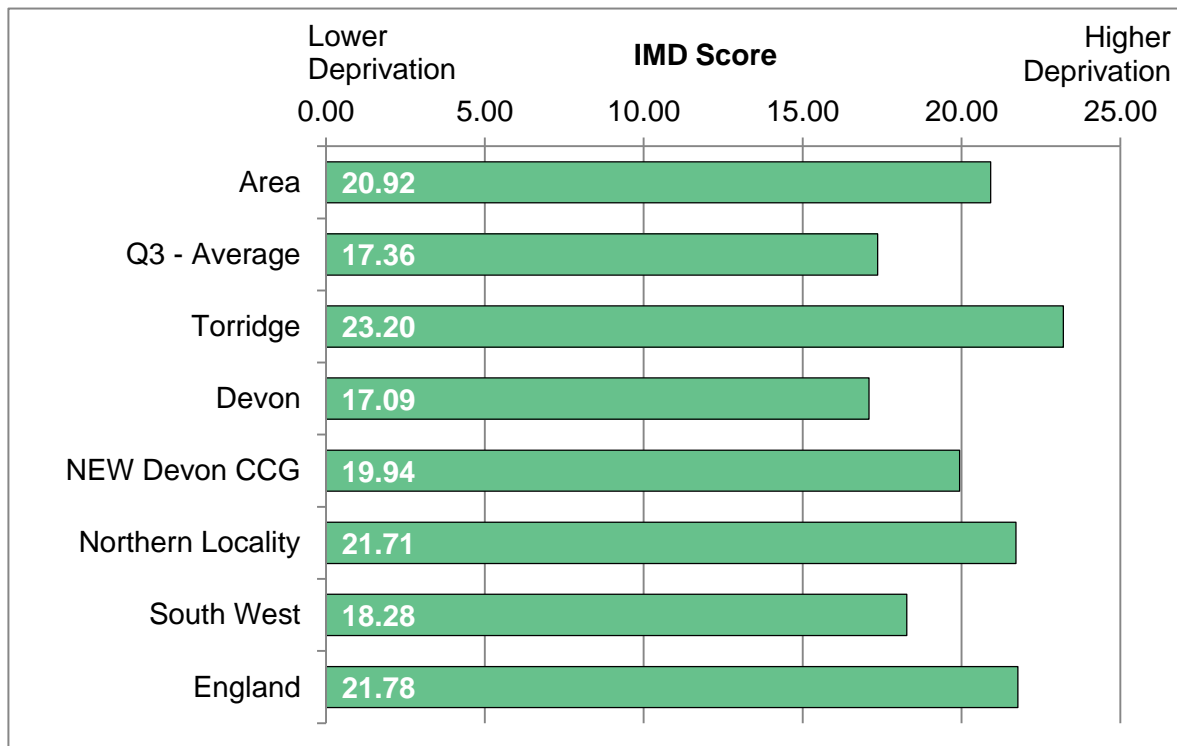
| Age | Female | Male |
|--------------|--------------|--------------|
| 0-4 | 1125 | 1197 |
| 5-9 | 1107 | 1217 |
| 10-14 | 988 | 1126 |
| 15-19 | 1091 | 1152 |
| 20-24 | 889 | 1025 |
| 25-29 | 1214 | 1088 |
| 30-34 | 1079 | 988 |
| 35-39 | 1174 | 1076 |
| 40-44 | 1280 | 1144 |
| 45-49 | 1469 | 1469 |
| 50-54 | 1669 | 1507 |
| 55-59 | 1583 | 1432 |
| 60-64 | 1608 | 1439 |
| 65-69 | 1799 | 1766 |
| 70-74 | 1550 | 1334 |
| 75-79 | 1137 | 997 |
| 80-84 | 870 | 729 |
| 85+ | 995 | 558 |
| Total | 22627 | 21244 |



| Area | 00-15 | 16-64 | 65-84 | 85+ | Total |
|-------------------|-------|-------|-------|------|--------|
| LSOA number | 7199 | 24937 | 10182 | 1553 | 43871 |
| Area rate | 16.4% | 56.8% | 23.2% | 3.5% | 100.0% |
| Q3 - Average | 16.1% | 60.2% | 20.6% | 3.2% | 100.0% |
| Torrige | 16.4% | 57.5% | 22.9% | 3.2% | 100.0% |
| Devon | 16.3% | 59.2% | 21.0% | 3.6% | 100.0% |
| NEW Devon CCG | 16.7% | 61.1% | 19.1% | 3.1% | 100.0% |
| Northern Locality | 16.8% | 58.0% | 21.9% | 3.3% | 100.0% |
| South West | 17.5% | 61.4% | 18.1% | 3.0% | 100.0% |
| England | 19.0% | 63.5% | 15.2% | 2.3% | 100.0% |

INDEX OF MULTIPLE DEPRIVATION

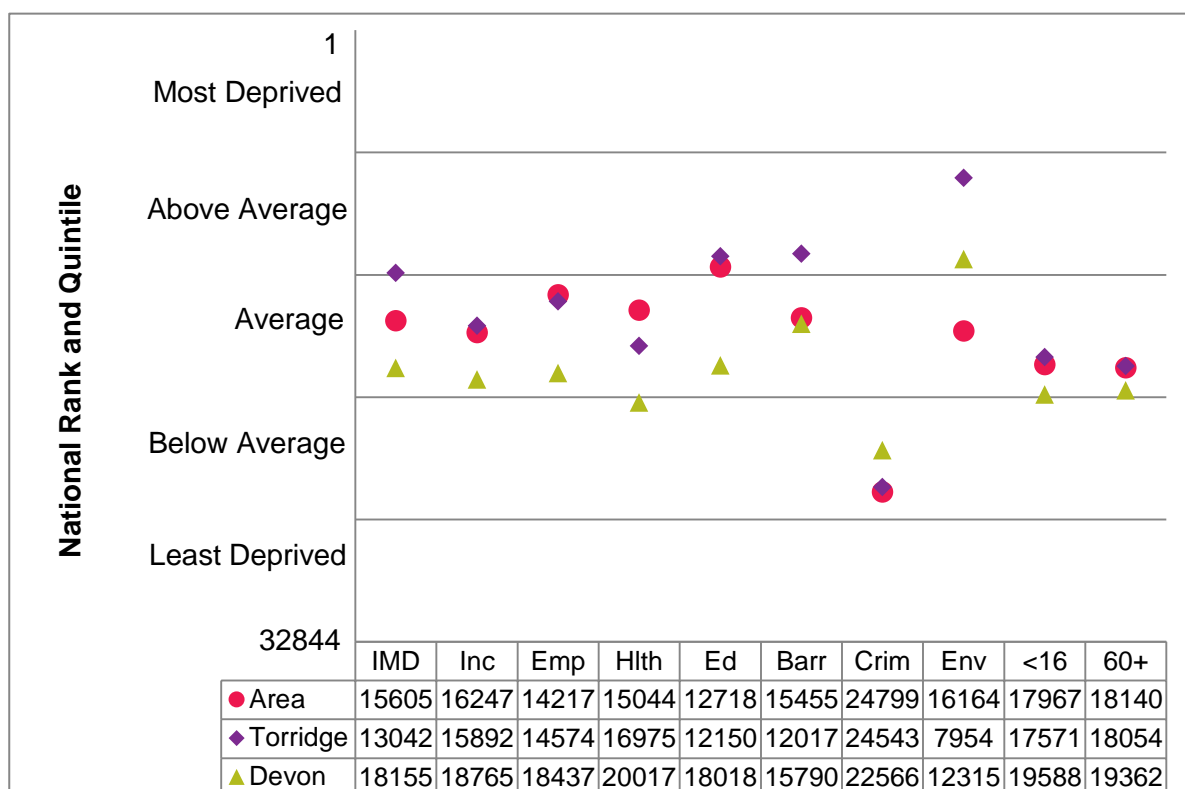
The English Indices of Deprivation measures relative levels of deprivation in small areas of England called Lower Super Output Areas (LSOAs). The overall measure is called the Index of Multiple Deprivation (IMD). This produces an IMD score (bar chart below showing score in 2015) and a national rank out of 32844 LSOAs (trend in national rank shown in line chart below). Deprivation and health are closely connected, with areas with higher levels of deprivation tending to experience poorer health outcomes. Reducing social inequalities in health is a major focus of the work of Health and Wellbeing Boards.



INDICES OF DEPRIVATION DOMAINS

The Indices of Deprivation are comprised of an overall Index of Multiple Deprivation (IMD); seven domains which contribute to the overall index covering income, employment, health, education, barriers to housing and services, crime and living environment; and two supplementary indices relating to income deprivation in children (under 16) & older people (60+).

The following chart compares the area's national rank on the IMD, seven domains and two supplementary indices in 2015, with the average ranks for their local authority district and Devon as a whole. The value axis ranges from the most deprived LSOA in the country (1) to the least deprived LSOA in the country (32844) on a given measure, and the chart is further divided into five sections highlighting the national deprivation group (quintile).



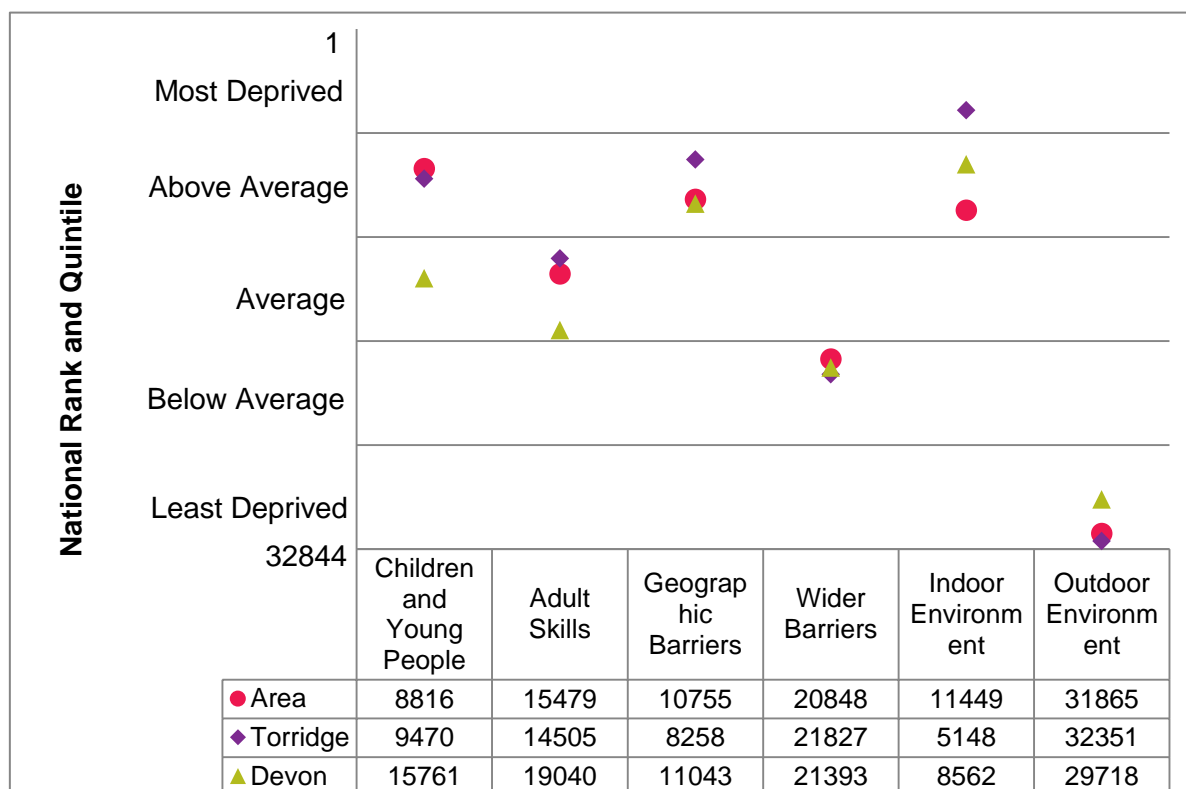
Indices of Deprivation Domain Descriptions

| Key | Domain |
|------|---|
| IMD | Index of Multiple Deprivation. |
| Inc | Income Domain. Persons dependent on state benefits and tax credits. |
| Emp | Employment Domain. Persons involuntarily excluded from the labour market. |
| Hlth | Health Domain. Covers mental health, admissions, illness & premature death. |
| Ed | Education Domain. Measures educational attainment and participation. |
| Barr | Barriers to Housing and Services Domain. Covers affordability and distance. |
| Crim | Crime Domain. Levels of violence, burglary, theft and criminal damage. |
| Env | Living Environment Domain. Quality of indoor and outdoor environment. |
| <16 | Income Deprivation Affecting Children Index (IDACI). See income. |
| 60+ | Income Deprivation Affecting Older People Index (IDAOP). See income. |

INDICES OF DEPRIVATION SUB-DOMAINS

Certain domains of the Indices of Deprivation include further sub-domains. The education, skills and training domain includes a children and young people sub-domain, and an adult skills sub-domain. The barriers to housing and services domain includes a geographic barriers sub-domain, and a wider barriers sub-domain. The living environment domain includes an indoor environment (housing conditions) sub-domain, and an outdoor environment sub-domain.

The following chart compares the area's national rank on these six sub-domains in 2015, with the average ranks for their local authority district and Devon as a whole. The value axis ranges from the most deprived LSOA in the country (1) to the least deprived LSOA in the country (32844) on a given measure, and the chart is further divided into five sections highlighting the national deprivation group (quintile).

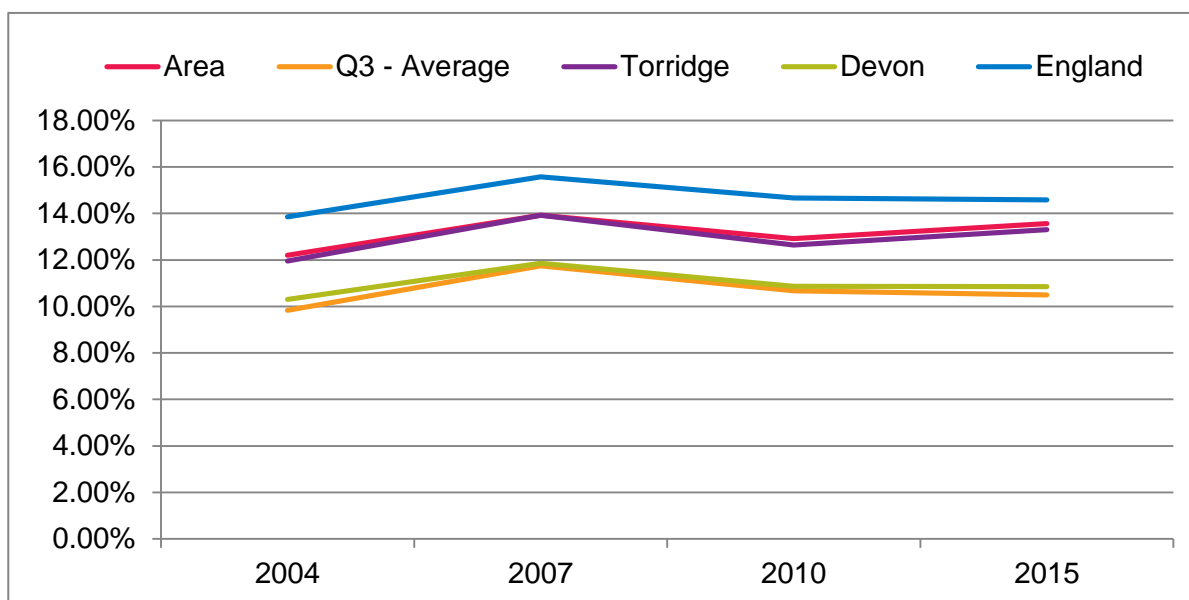
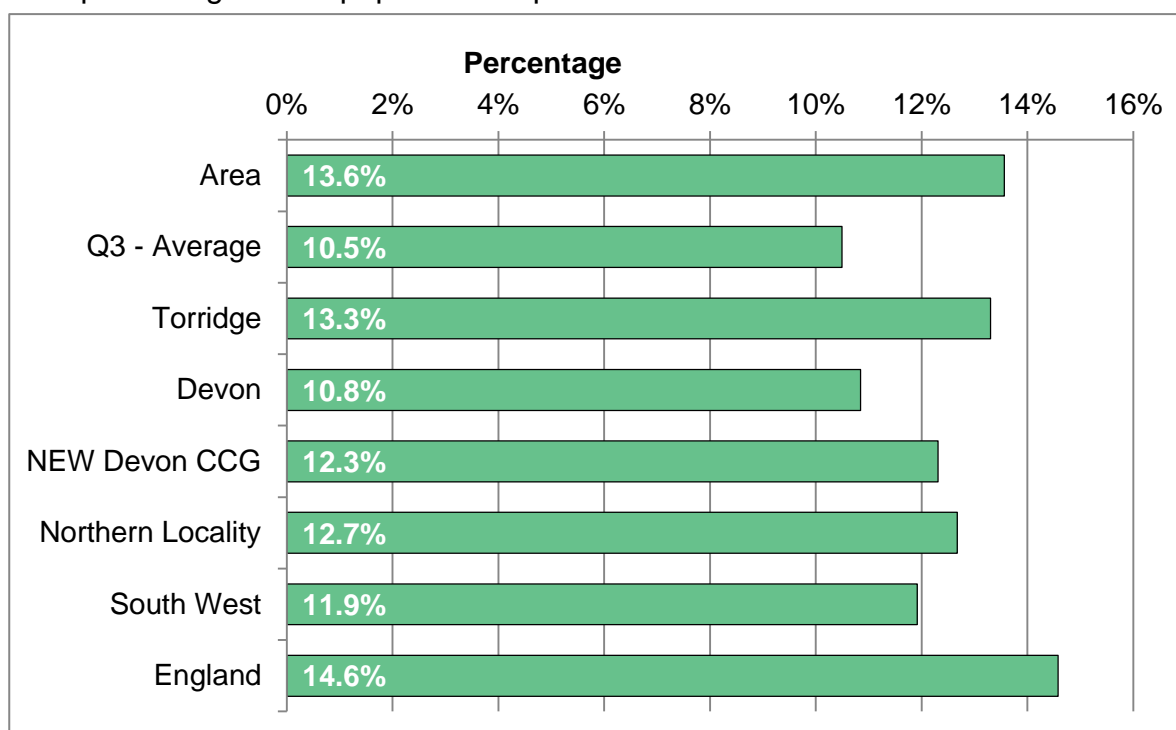


Indices of Deprivation Domain Descriptions

| Sub-Domain | Description |
|---------------------------|---|
| Children and Young People | Education sub-domain covering key stage attainment, school absence, and retention in further and higher education |
| Adult Skills | Education sub-domain covering the proportion of adults with no or low qualifications and English language proficiency |
| Geographic Barriers | Barriers sub-domain covering road distance to a post office, primary school, general store/supermarket or GP surgery |
| Wider Barriers | Barriers sub-domain covering household overcrowding, homelessness acceptances and housing affordability |
| Indoor Environment | Covers central heating availability and poor housing conditions |
| Outdoor Environment | Covers air quality and pedestrian and cyclist traffic accidents |

INCOME DEPRIVATION

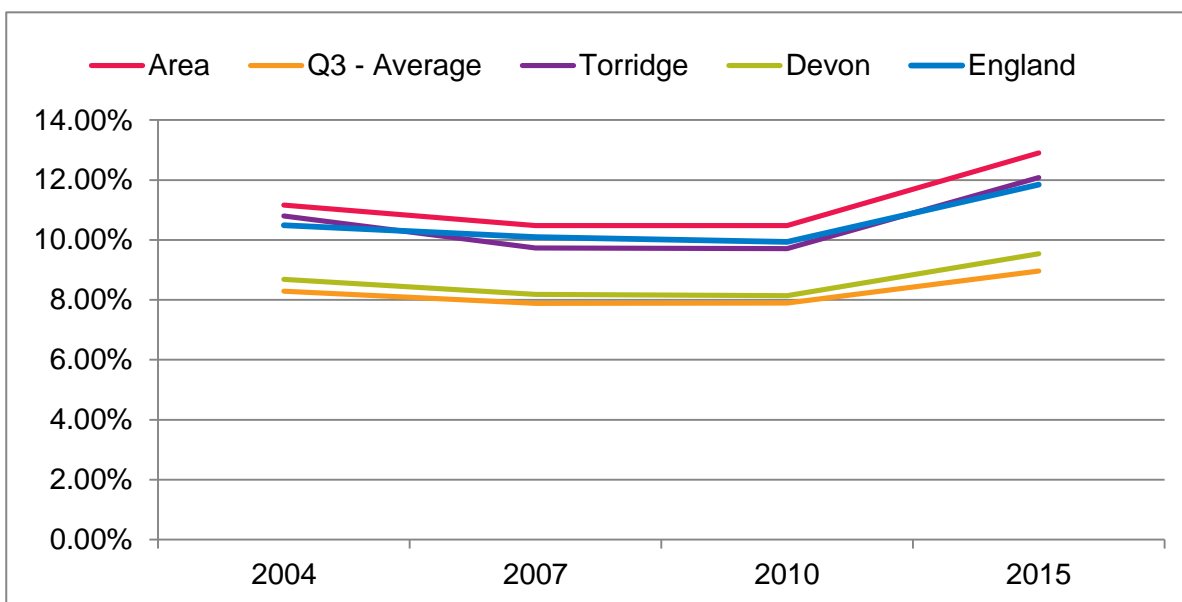
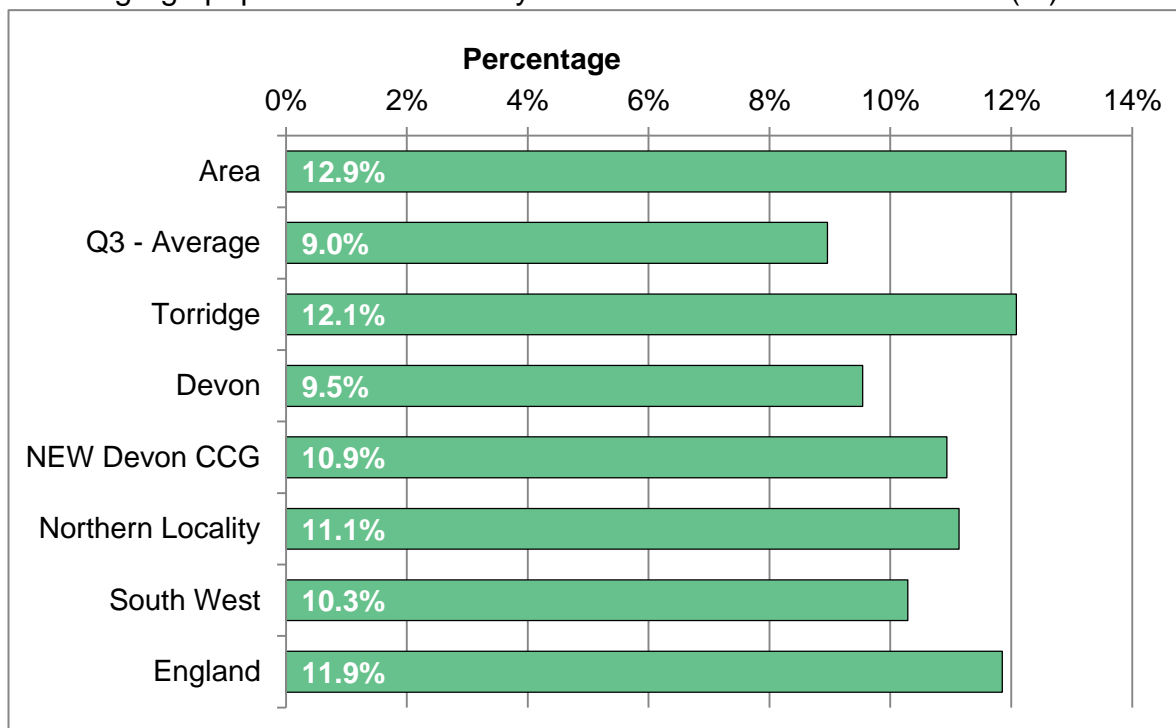
The percentage of the population dependent on benefits or tax credits.



| Area | 2004 | 2007 | 2010 | 2015 |
|-------------------|-------|-------|-------|-------|
| Total per annum | - | - | - | 5867 |
| Area rate | 12.2% | 13.9% | 12.9% | 13.6% |
| Q3 - Average | 9.8% | 11.7% | 10.7% | 10.5% |
| Torridge | 11.9% | 13.9% | 12.6% | 13.3% |
| Devon | 10.3% | 11.8% | 10.9% | 10.8% |
| NEW Devon CCG | 11.8% | 13.1% | 12.1% | 12.3% |
| Northern Locality | 12.4% | 14.2% | 12.9% | 12.7% |
| South West | 10.6% | 12.3% | 11.6% | 11.9% |
| England | 13.9% | 15.6% | 14.7% | 14.6% |

EMPLOYMENT DEPRIVATION

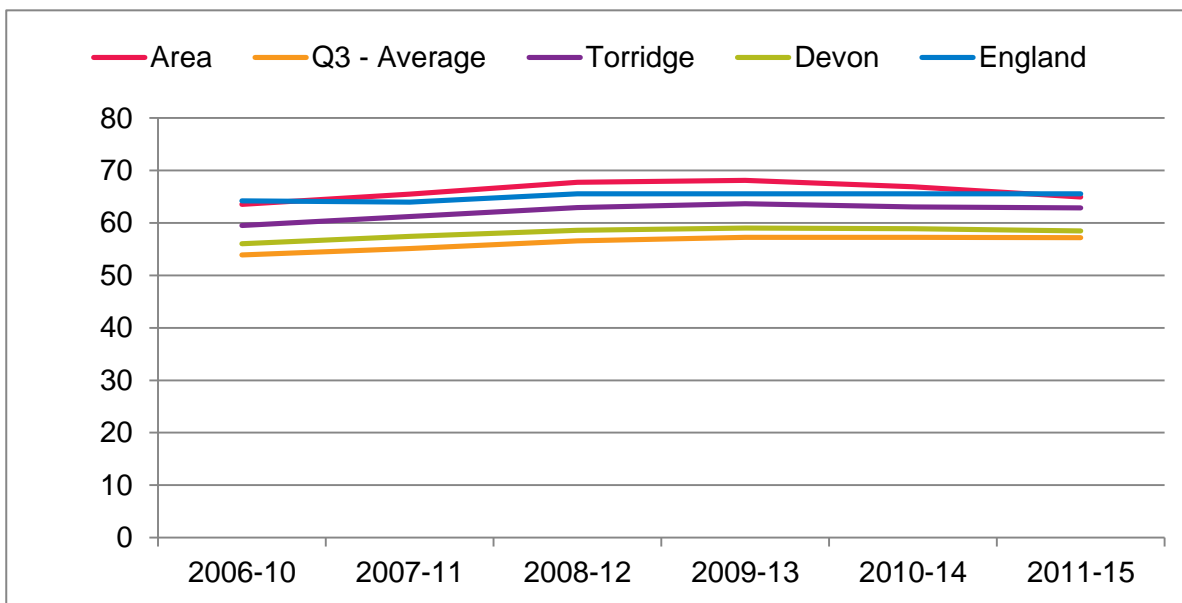
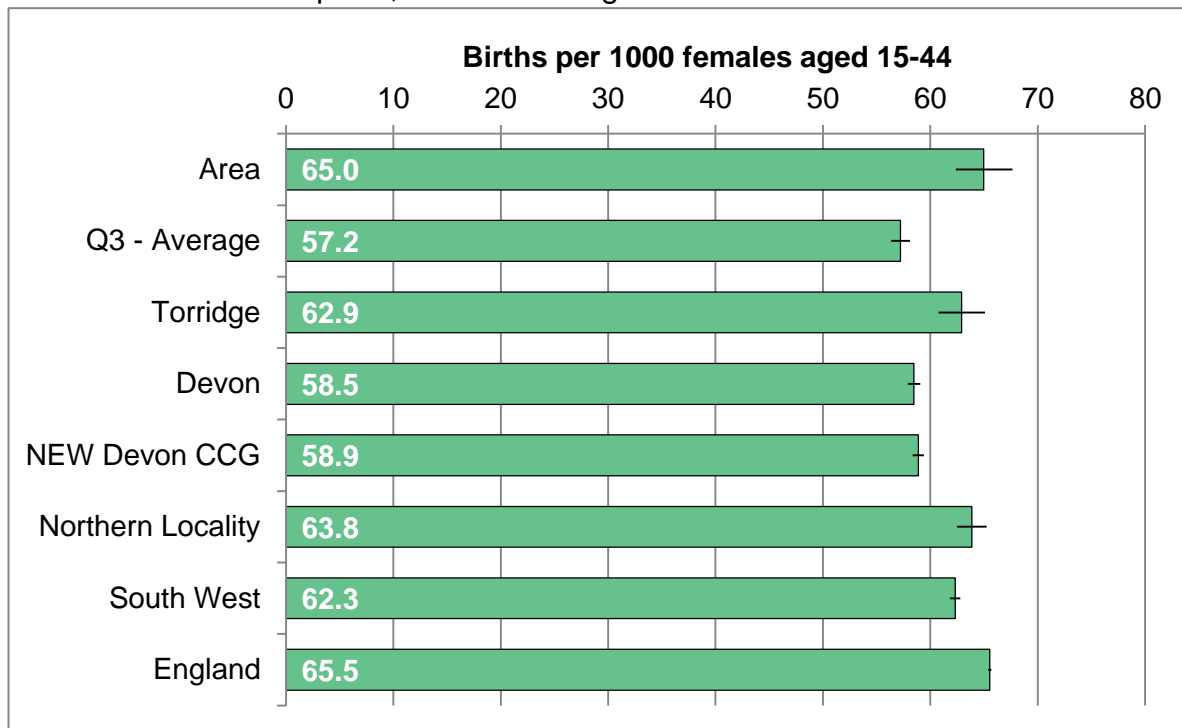
Working-age population involuntarily excluded from the labour market (%).



| Area | 2004 | 2007 | 2010 | 2015 |
|-------------------|-------|-------|-------|-------|
| Total per annum | - | - | - | 2907 |
| Area rate | 11.2% | 10.5% | 10.5% | 12.9% |
| Q3 - Average | 8.3% | 7.9% | 7.9% | 9.0% |
| Torridge | 10.8% | 9.7% | 9.7% | 12.1% |
| Devon | 8.7% | 8.2% | 8.1% | 9.5% |
| NEW Devon CCG | 9.7% | 9.3% | 9.1% | 10.9% |
| Northern Locality | 10.7% | 9.6% | 9.6% | 11.1% |
| South West | 8.5% | 8.5% | 8.5% | 10.3% |
| England | 10.5% | 10.1% | 9.9% | 11.9% |

BIRTH RATE

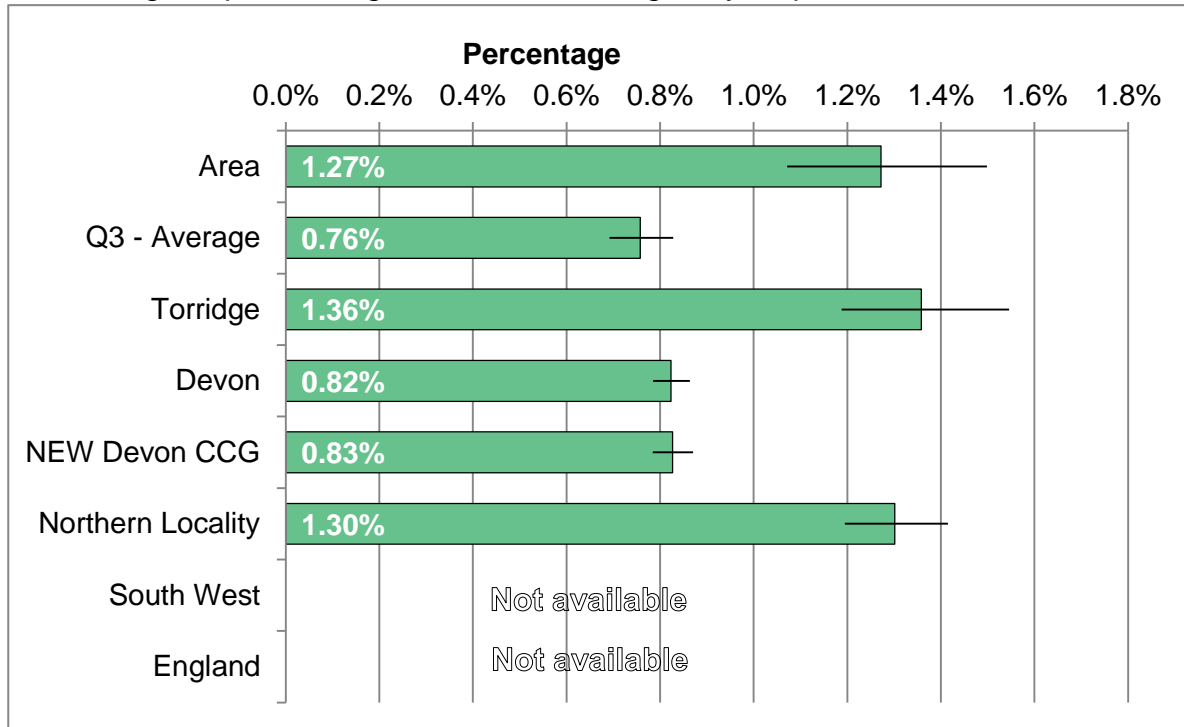
Number of live births per 1,000 females aged 15 to 44.



| Area | 2006-10 | 2007-11 | 2008-12 | 2009-13 | 2010-14 | 2011-15 |
|-------------------|---------|---------|---------|---------|---------|---------|
| Births per annum | 438 | 450 | 465 | 466 | 457 | 442 |
| Area rate | 63.5 | 65.5 | 67.7 | 68.1 | 66.9 | 65.0 |
| Q3 - Average | 53.9 | 55.1 | 56.6 | 57.3 | 57.3 | 57.2 |
| Torridge | 59.5 | 61.2 | 62.9 | 63.7 | 63.0 | 62.9 |
| Devon | 56.1 | 57.4 | 58.6 | 59.0 | 58.9 | 58.5 |
| NEW Devon CCG | 57.0 | 58.4 | 59.5 | 59.6 | 59.4 | 58.9 |
| Northern Locality | 61.1 | 63.0 | 64.4 | 65.0 | 64.6 | 63.8 |
| South West | 61.0 | 60.8 | 62.3 | 62.3 | 62.3 | 62.3 |
| England | 64.2 | 64.0 | 65.5 | 65.5 | 65.5 | 65.5 |

EARLY HELP DAF ASSESSMENTS

Percentage of persons aged 0 to 24 receiving early help DAF assessment



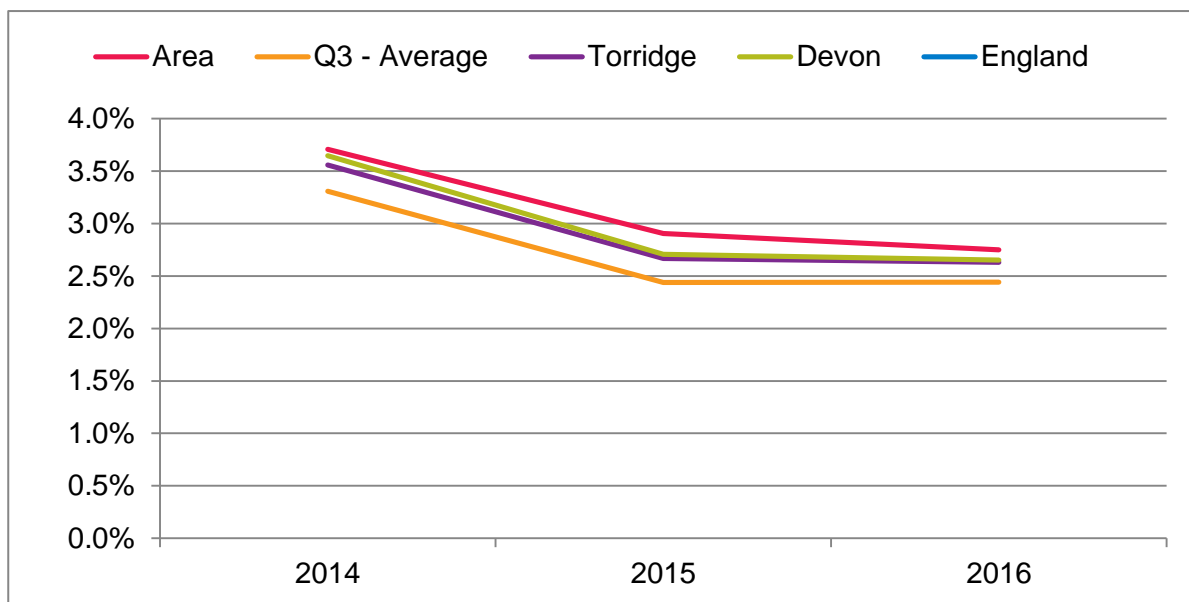
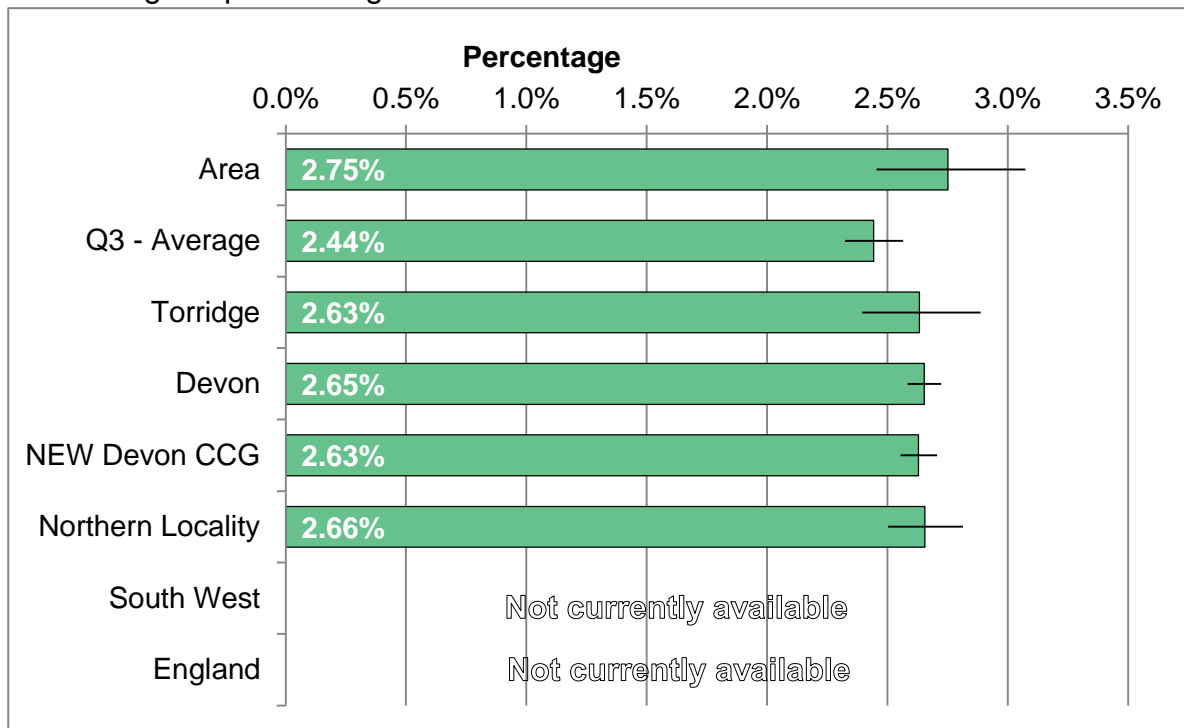
Trend information not currently available

| Area | 2015 |
|-------------------|-------|
| Number per annum | 141 |
| Area rate | 1.27% |
| Q3 - Average | 0.76% |
| Torridge | 1.36% |
| Devon | 0.82% |
| NEW Devon CCG | 0.83% |
| Northern Locality | 1.30% |
| South West | N/A |
| England | N/A |

CCG figure is Devon County Council component of CCG only

CHILDREN IN NEED

Percentage of persons aged 0 to 24 who are defined as 'in need' in annual census.

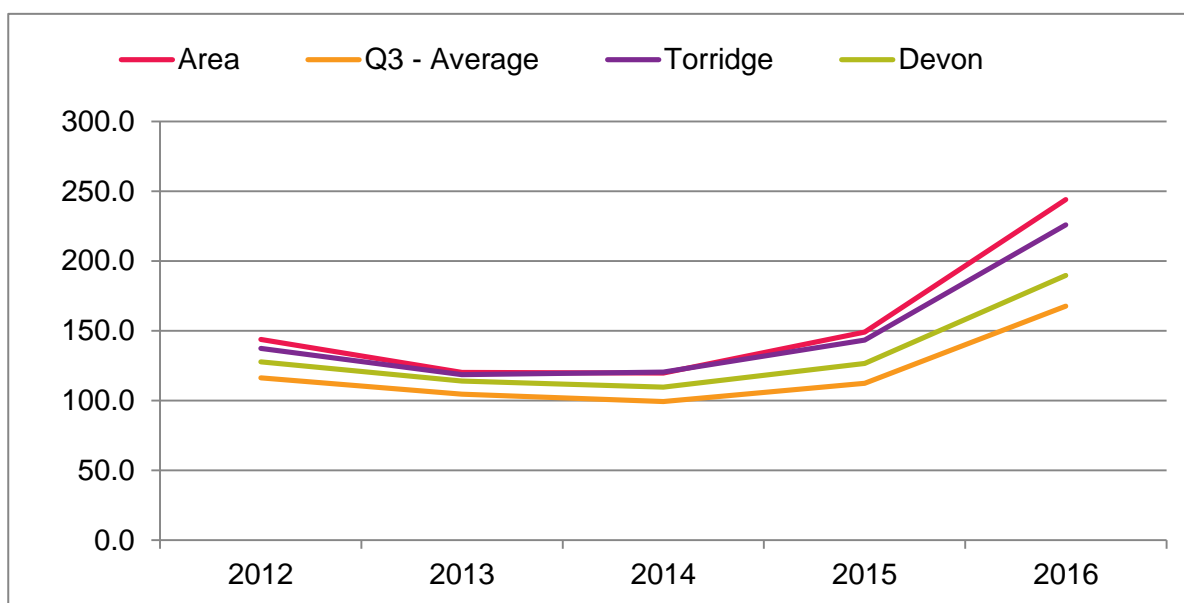
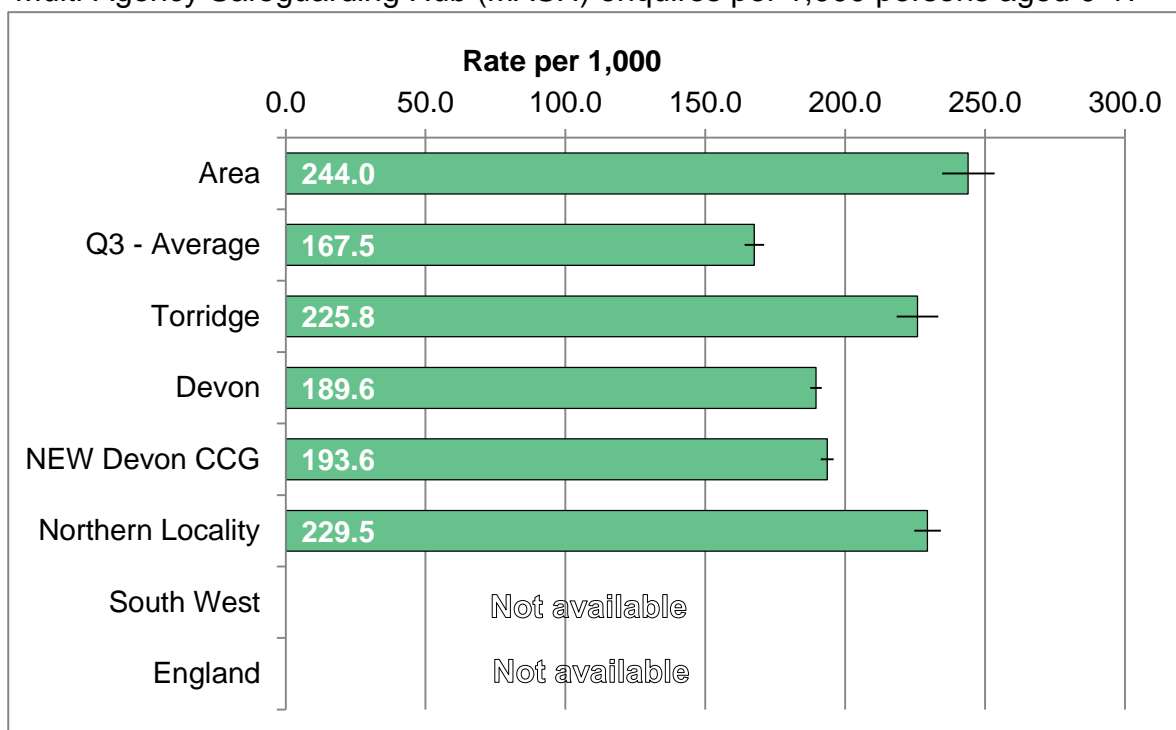


| Area | 2014 | 2015 | 2016 |
|-------------------|-------|-------|-------|
| Number per annum | 411 | 322 | 305 |
| Area rate | 3.71% | 2.90% | 2.75% |
| Q3 - Average | 3.31% | 2.44% | 2.44% |
| Torridge | 3.56% | 2.67% | 2.63% |
| Devon | 3.65% | 2.71% | 2.65% |
| NEW Devon CCG | 3.70% | 2.70% | 2.63% |
| Northern Locality | 3.57% | 2.75% | 2.66% |
| South West | N/A | N/A | N/A |
| England | N/A | N/A | N/A |

CCG figure is Devon County Council component of CCG only

SAFEGUARDING ENQUIRIES (MASH)

Multi-Agency Safeguarding Hub (MASH) enquires per 1,000 persons aged 0-17

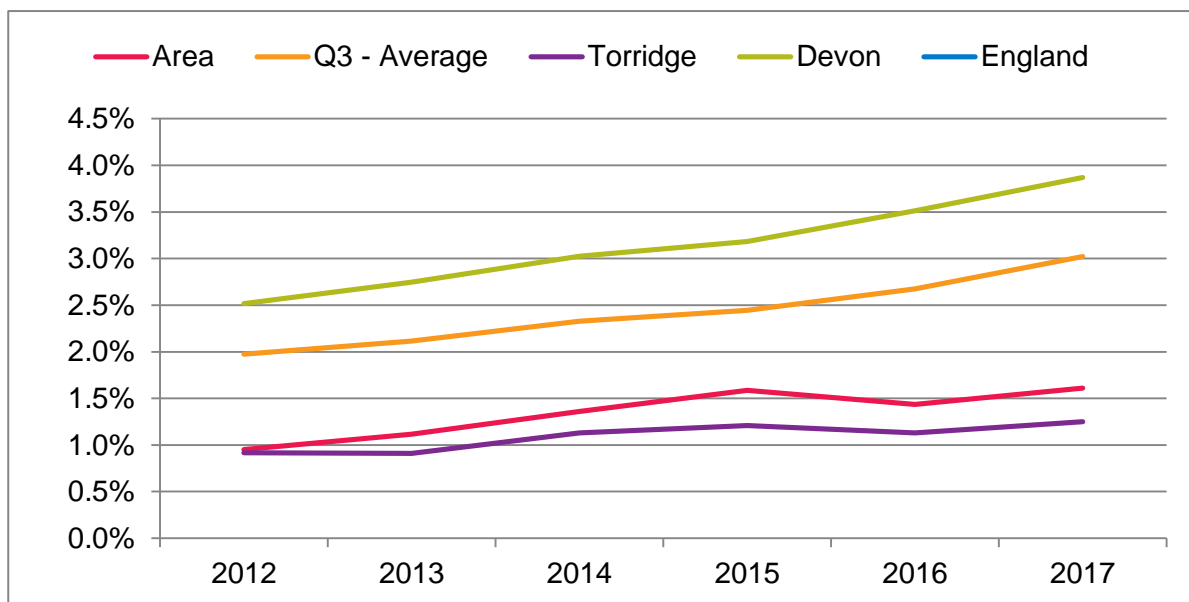
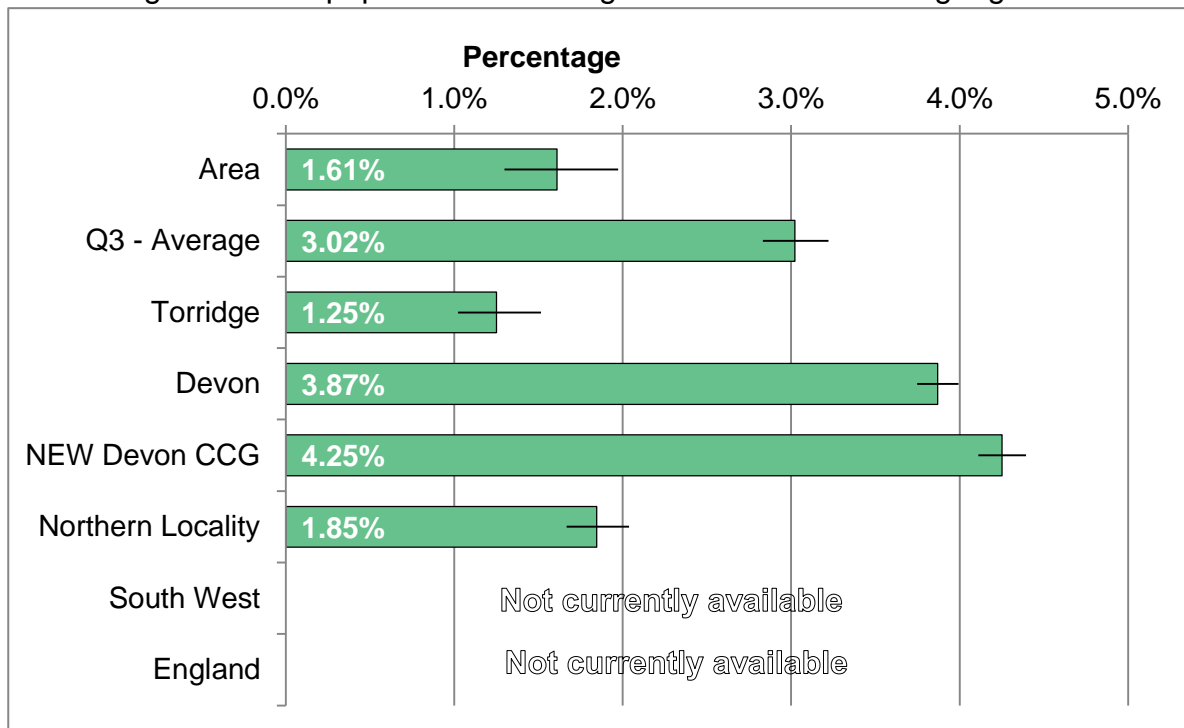


| Area | 2012 | 2013 | 2014 | 2015 | 2016 |
|-------------------|-------|-------|-------|-------|-------|
| Number per annum | 1,172 | 987 | 980 | 1,221 | 1,982 |
| Area rate | 143.7 | 120.2 | 119.6 | 149.1 | 244.0 |
| Q3 - Average | 116.3 | 104.5 | 99.2 | 112.3 | 167.5 |
| Torridge | 137.3 | 118.5 | 120.3 | 143.3 | 225.8 |
| Devon | 127.7 | 114.0 | 109.6 | 126.4 | 189.6 |
| NEW Devon CCG | 129.1 | 111.8 | 108.7 | 128.9 | 193.6 |
| Northern Locality | 134.6 | 115.4 | 115.6 | 143.0 | 229.5 |
| South West | N/A | N/A | N/A | N/A | N/A |
| England | N/A | N/A | N/A | N/A | N/A |

CCG figure is Devon County Council component of CCG only

ENGLISH AS AN ADDITIONAL LANGUAGE

Percentage of school pupils for whom English is not their first language

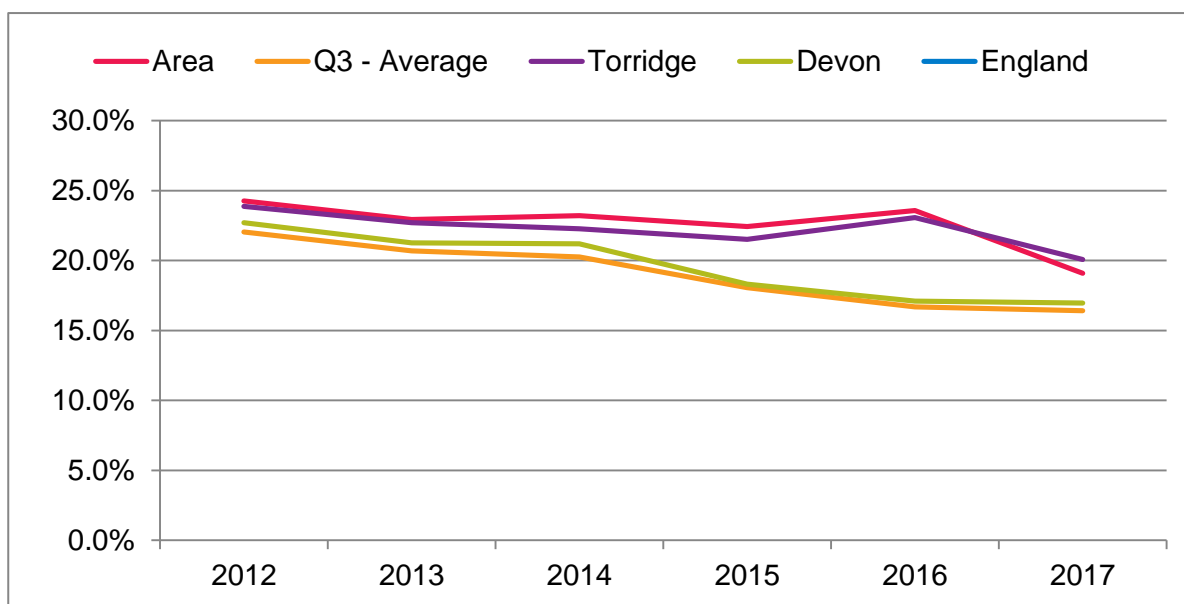
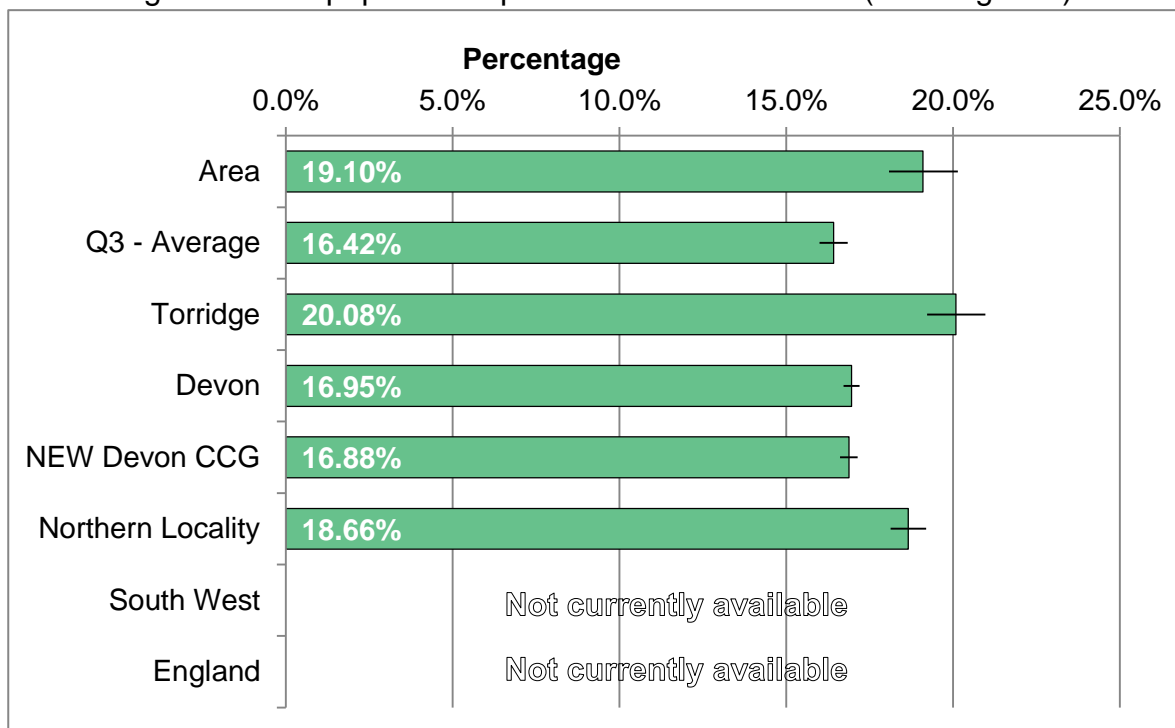


| Area | 2012 | 2013 | 2014 | 2015 | 2016 | 2017 |
|-------------------|-------|-------|-------|-------|-------|-------|
| Number per annum | 52 | 61 | 74 | 87 | 80 | 91 |
| Area rate | 0.95% | 1.12% | 1.36% | 1.59% | 1.43% | 1.61% |
| Q3 - Average | 1.97% | 2.12% | 2.33% | 2.44% | 2.67% | 3.02% |
| Torridge | 0.92% | 0.91% | 1.13% | 1.21% | 1.13% | 1.25% |
| Devon | 2.52% | 2.75% | 3.02% | 3.18% | 3.51% | 3.87% |
| NEW Devon CCG | 2.73% | 2.99% | 3.32% | 3.53% | 3.88% | 4.25% |
| Northern Locality | 1.50% | 1.54% | 1.74% | 1.81% | 1.76% | 1.85% |
| South West | N/A | N/A | N/A | N/A | N/A | N/A |
| England | N/A | N/A | N/A | N/A | N/A | N/A |

CCG figure is Devon County Council component of CCG only

SPECIAL EDUCATIONAL NEEDS

Percentage of school pupils with special educational needs (all categories)

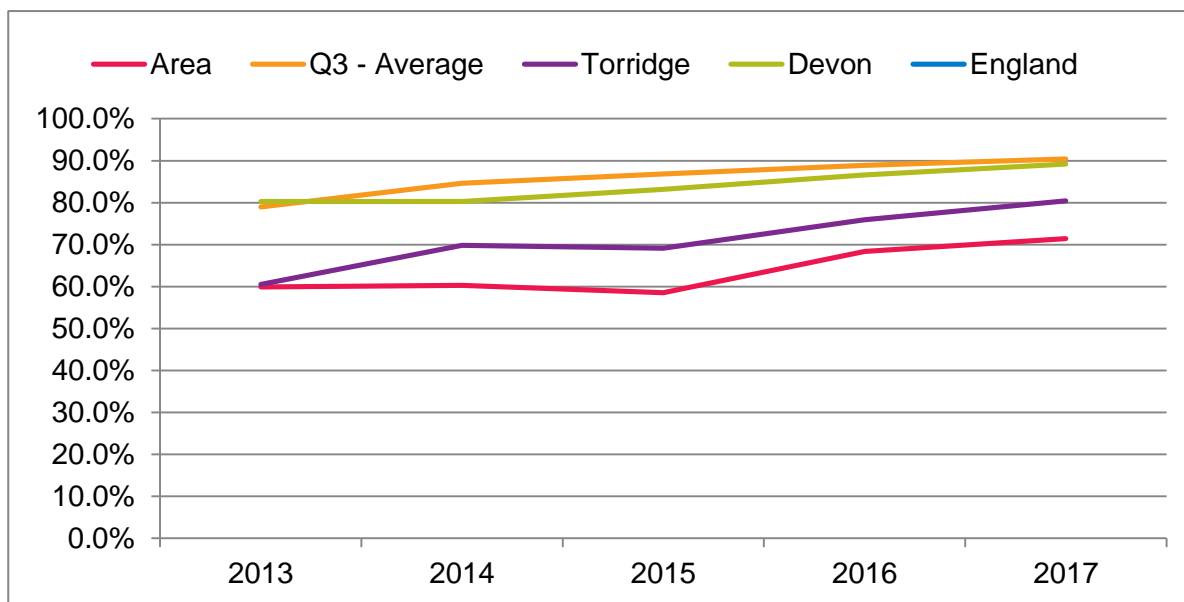
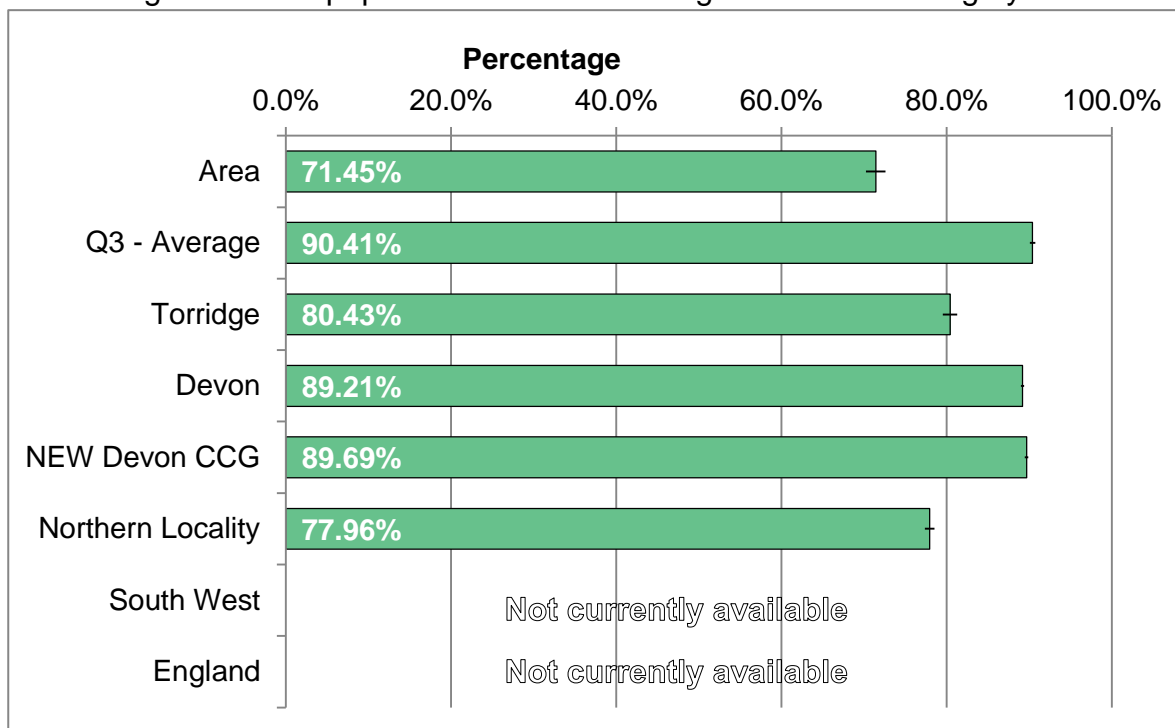


| Area | 2012 | 2013 | 2014 | 2015 | 2016 | 2017 |
|-------------------|--------|--------|--------|--------|--------|--------|
| Number per annum | 1325 | 1254 | 1264 | 1230 | 1315 | 1079 |
| Area rate | 24.25% | 22.95% | 23.22% | 22.43% | 23.59% | 19.10% |
| Q3 - Average | 22.04% | 20.69% | 20.26% | 18.05% | 16.68% | 16.42% |
| Torridge | 23.89% | 22.71% | 22.27% | 21.53% | 23.07% | 20.08% |
| Devon | 22.70% | 21.26% | 21.20% | 18.31% | 17.11% | 16.95% |
| NEW Devon CCG | 23.29% | 21.48% | 21.13% | 18.18% | 17.21% | 16.88% |
| Northern Locality | 23.73% | 22.57% | 22.64% | 20.48% | 20.55% | 18.66% |
| South West | N/A | N/A | N/A | N/A | N/A | N/A |
| England | N/A | N/A | N/A | N/A | N/A | N/A |

CCG figure is Devon County Council component of CCG only

PUPILS IN WELL RATED SCHOOLS

Percentage of school pupils in schools rated as good or outstanding by Ofsted

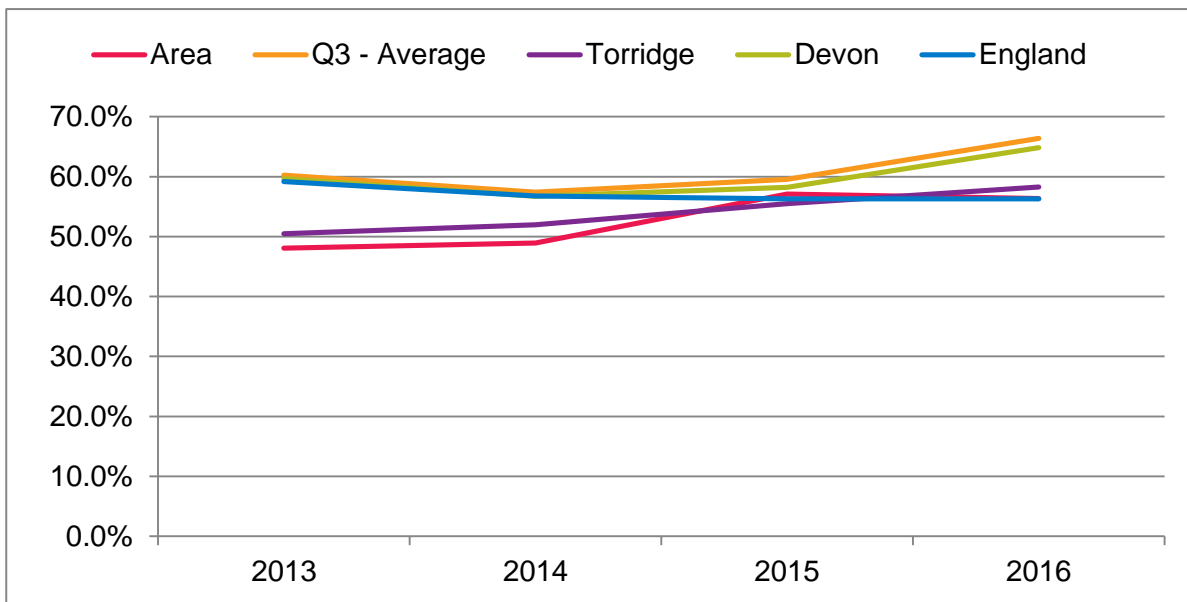
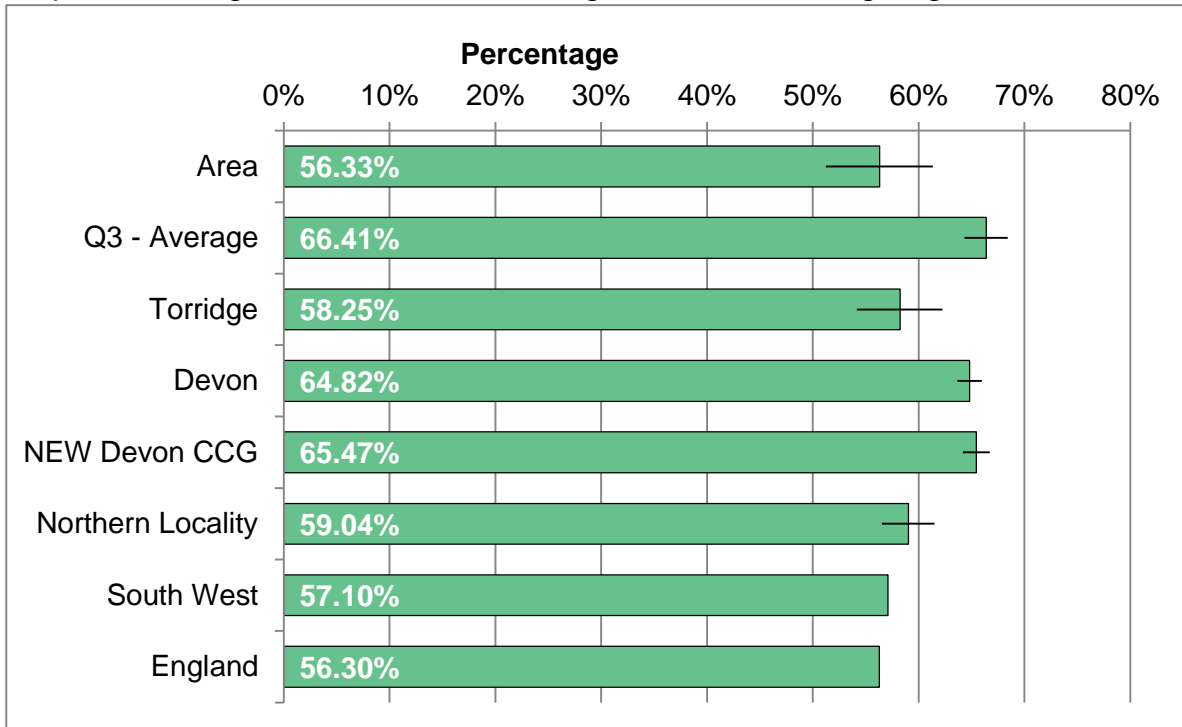


| Area | 2013 | 2014 | 2015 | 2016 | 2017 |
|-------------------|--------|--------|--------|--------|--------|
| Number per annum | 3272 | 3282 | 3209 | 3813 | 4037 |
| Area rate | 59.87% | 60.30% | 58.53% | 68.39% | 71.45% |
| Q3 - Average | 78.98% | 84.63% | 86.80% | 88.87% | 90.41% |
| Torridge | 60.48% | 69.81% | 69.15% | 75.92% | 80.43% |
| Devon | 80.31% | 80.26% | 83.20% | 86.64% | 89.21% |
| NEW Devon CCG | 82.11% | 80.10% | 82.17% | 86.64% | 89.69% |
| Northern Locality | 78.30% | 78.04% | 76.42% | 79.56% | 77.96% |
| South West | N/A | N/A | N/A | N/A | N/A |
| England | N/A | N/A | N/A | N/A | N/A |

CCG figure is Devon County Council component of CCG only

GCSE ATTAINMENT: FIVE OR MORE A*-C

Pupils achieving five or more GCSEs at grade A*-C including English and Maths

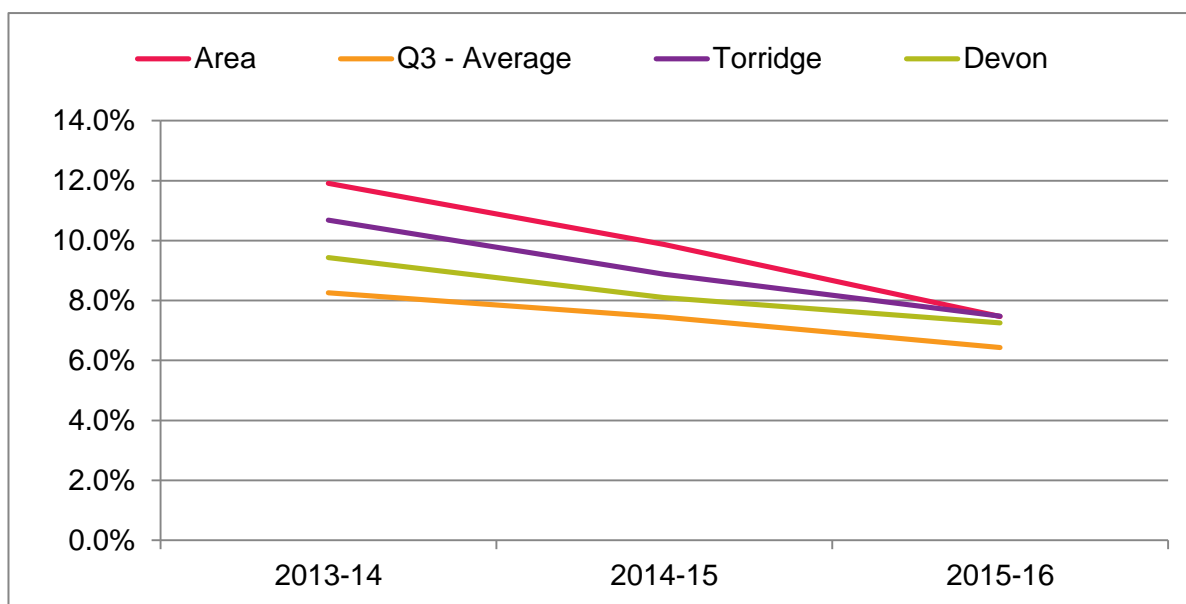
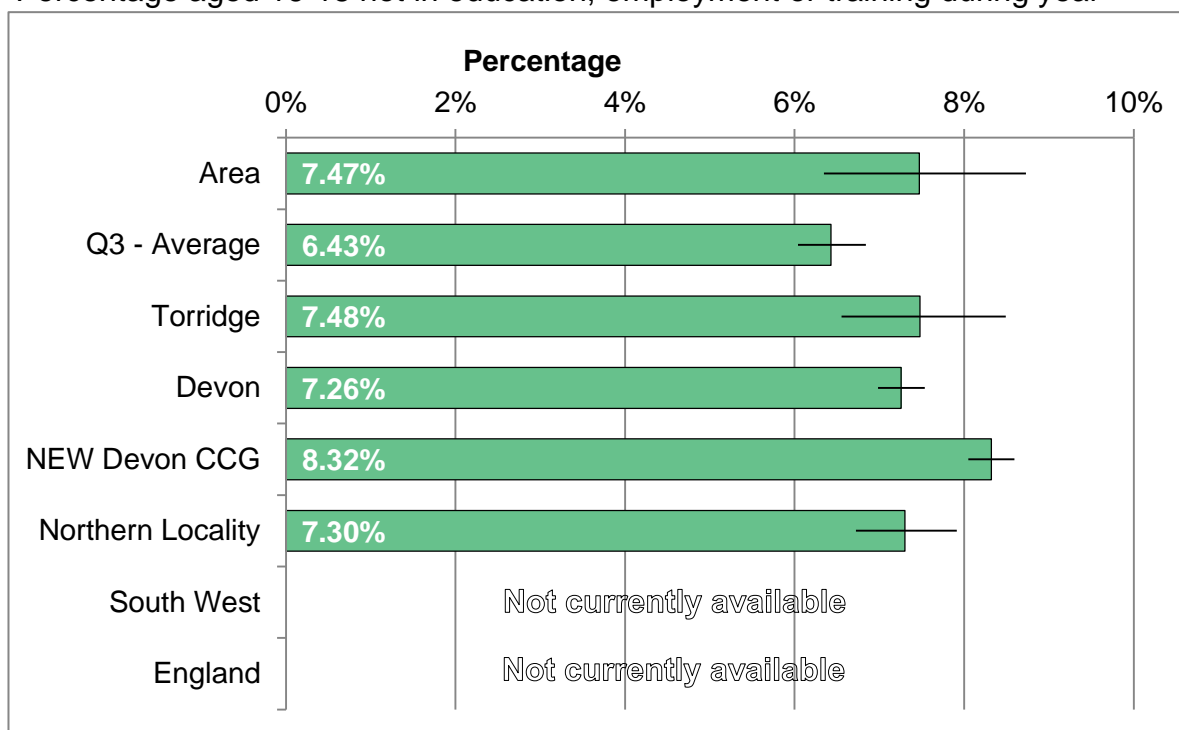


| Area | 2013 | 2014 | 2015 | 2016 |
|-------------------|--------|--------|--------|--------|
| Number per annum | 213 | 208 | 237 | 218 |
| Area rate | 48.08% | 48.94% | 57.11% | 56.33% |
| Q3 - Average | 60.23% | 57.40% | 59.55% | 66.41% |
| Torridge | 50.46% | 51.97% | 55.48% | 58.25% |
| Devon | 59.69% | 56.71% | 58.21% | 64.82% |
| NEW Devon CCG | 60.14% | 56.83% | 59.12% | 65.47% |
| Northern Locality | 53.53% | 49.04% | 53.89% | 59.04% |
| South West | 59.50% | 56.70% | 57.10% | 57.10% |
| England | 59.20% | 56.80% | 56.30% | 56.30% |

CCG figure is Devon County Council component of CCG only

NOT IN EDUCATION, EMPLOYMENT OR TRAINING

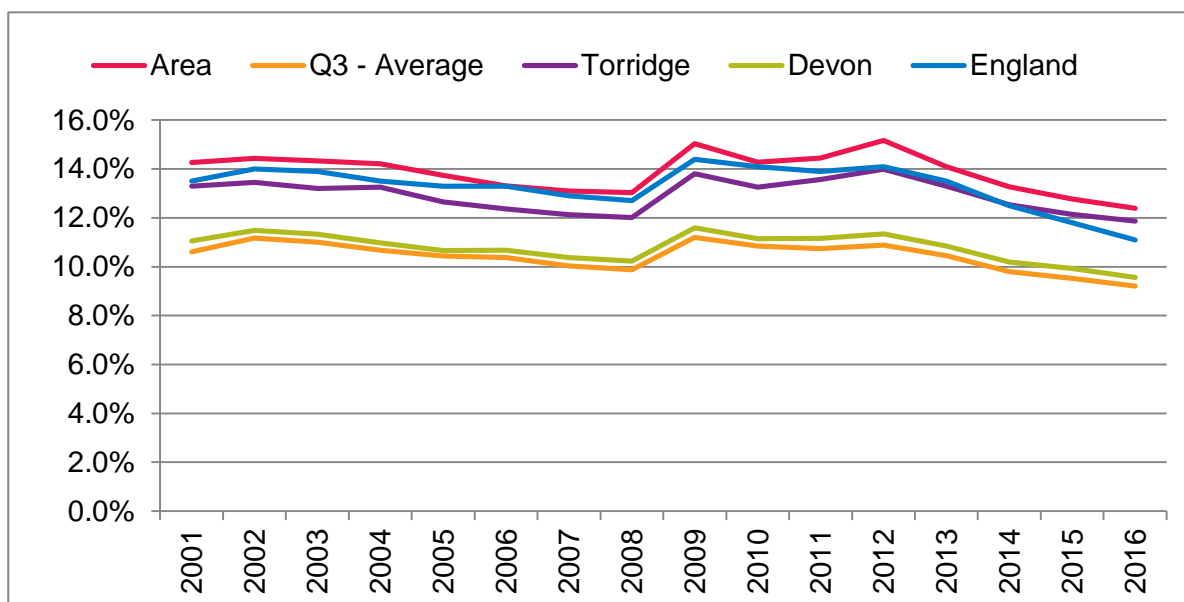
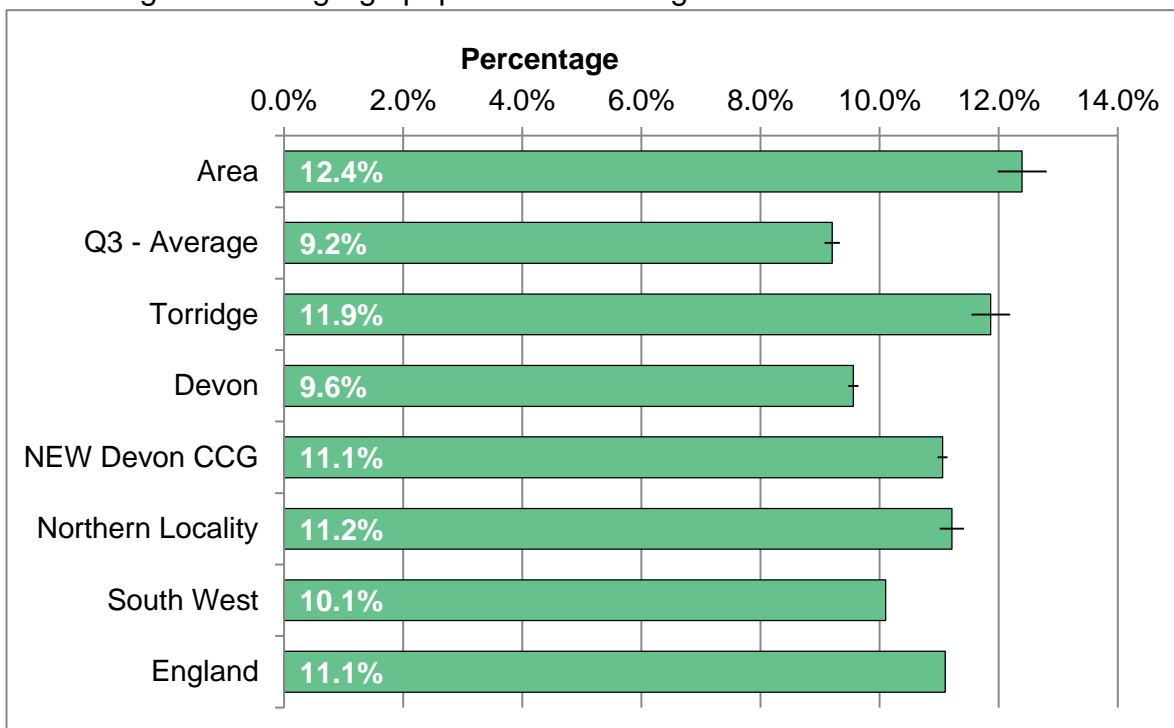
Percentage aged 16-18 not in education, employment or training during year



| Area | 2013-14 | 2014-15 | 2015-16 |
|-------------------|---------|---------|---------|
| Number per annum | 226 | 195 | 146 |
| Area rate | 11.91% | 9.87% | 7.47% |
| Q3 - Average | 8.26% | 7.44% | 6.43% |
| Torridge | 10.68% | 8.88% | 7.48% |
| Devon | 9.43% | 8.10% | 7.26% |
| NEW Devon CCG | 10.90% | 9.33% | 8.32% |
| Northern Locality | 10.51% | 8.66% | 7.30% |
| South West | N/A | N/A | N/A |
| England | N/A | N/A | N/A |

WORKING AGE BENEFIT CLAIMANT RATE

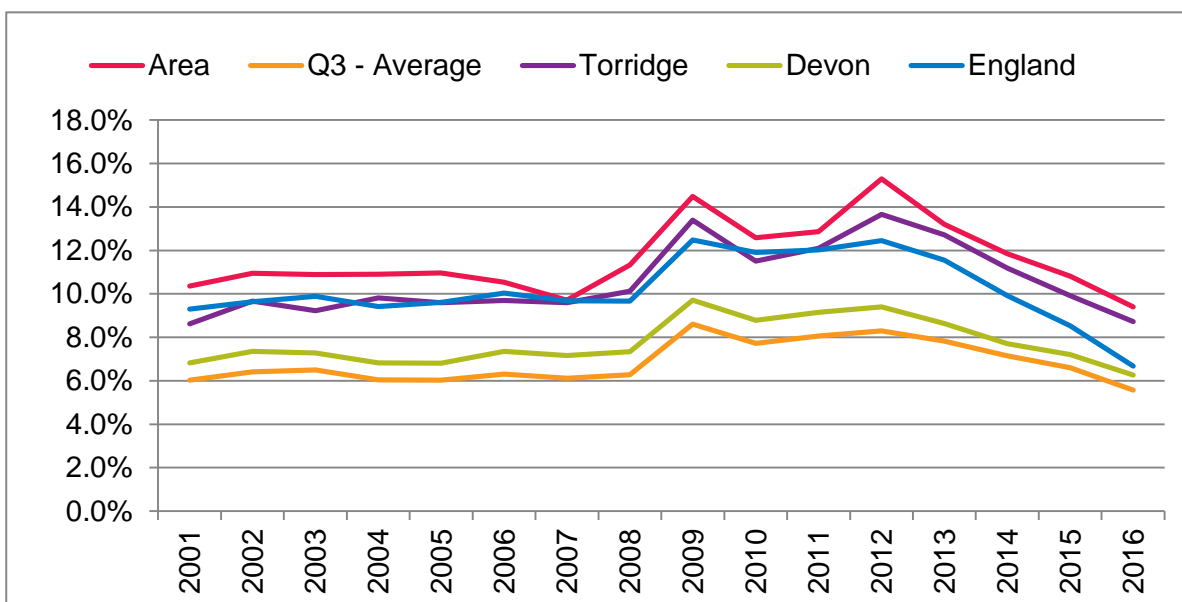
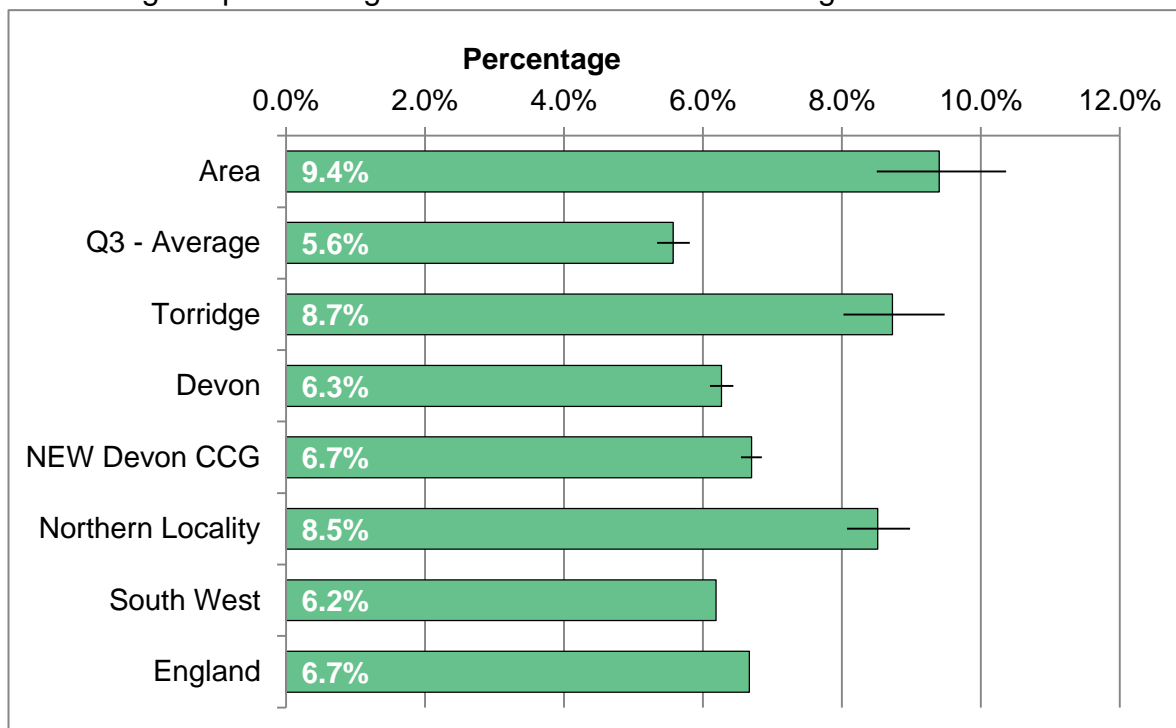
Percentage of working-age population receiving benefits.



| Area | 2011 | 2012 | 2013 | 2014 | 2015 | 2016 |
|-------------------|-------|-------|-------|-------|-------|-------|
| Total claimants | 3650 | 3820 | 3540 | 3325 | 3200 | 3105 |
| Area rate | 14.4% | 15.2% | 14.1% | 13.3% | 12.8% | 12.4% |
| Q3 - Average | 10.7% | 10.9% | 10.4% | 9.8% | 9.5% | 9.2% |
| Torridge | 13.6% | 14.0% | 13.3% | 12.5% | 12.1% | 11.9% |
| Devon | 11.2% | 11.3% | 10.8% | 10.2% | 9.9% | 9.6% |
| NEW Devon CCG | 12.9% | 13.1% | 12.5% | 11.7% | 11.5% | 11.1% |
| Northern Locality | 12.7% | 13.1% | 12.5% | 11.9% | 11.5% | 11.2% |
| South West | 12.0% | 12.2% | 11.8% | 11.0% | 10.6% | 10.1% |
| England | 13.9% | 14.1% | 13.5% | 12.5% | 11.8% | 11.1% |

AGED 16 TO 24 BENEFIT CLAIMANT RATE

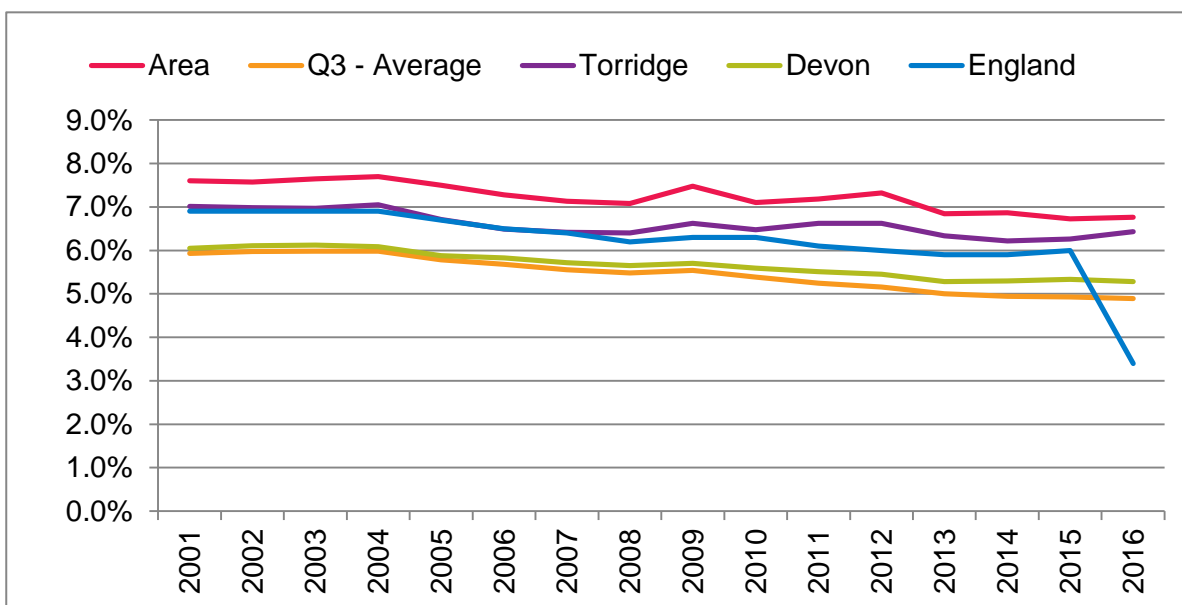
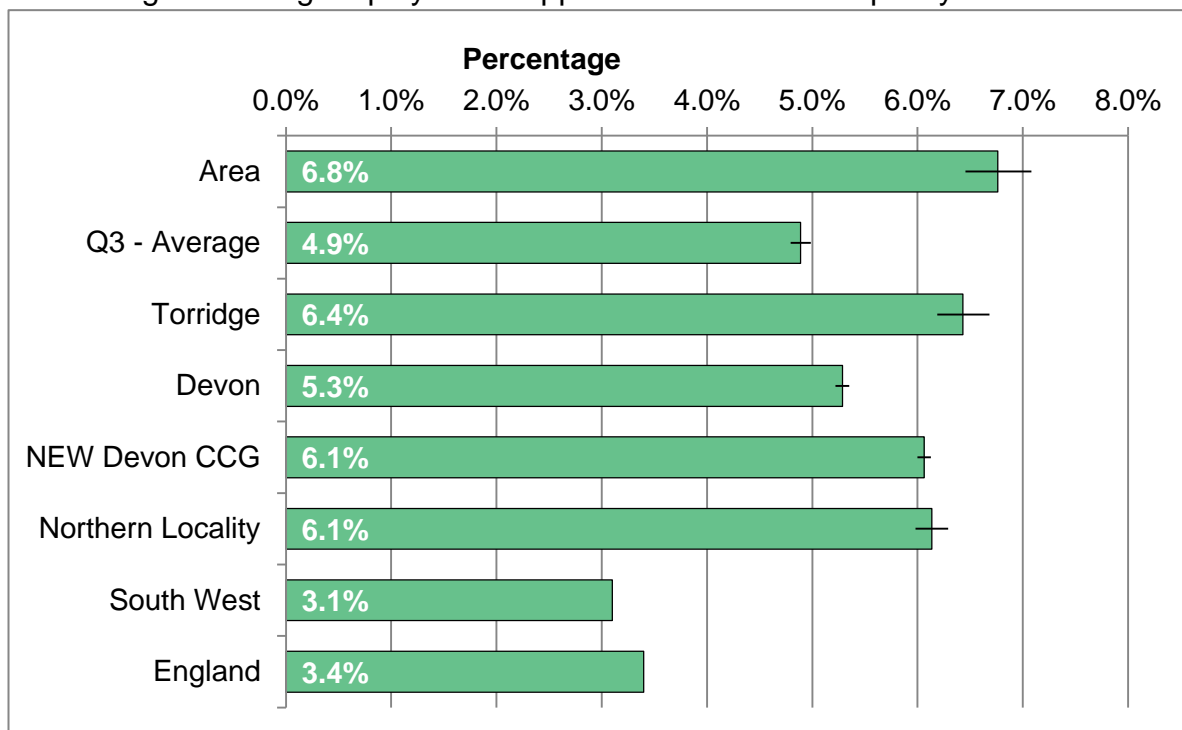
Percentage of persons aged between 16 and 24 receiving benefits.



| Area | 2011 | 2012 | 2013 | 2014 | 2015 | 2016 |
|-------------------|-------|-------|-------|-------|-------|------|
| Total claimants | 505 | 610 | 520 | 460 | 420 | 365 |
| Area rate | 12.9% | 15.3% | 13.2% | 11.8% | 10.8% | 9.4% |
| Q3 - Average | 8.1% | 8.3% | 7.8% | 7.1% | 6.6% | 5.6% |
| Torridge | 12.1% | 13.7% | 12.7% | 11.2% | 9.9% | 8.7% |
| Devon | 9.1% | 9.4% | 8.6% | 7.7% | 7.2% | 6.3% |
| NEW Devon CCG | 10.4% | 10.6% | 9.6% | 8.5% | 7.7% | 6.7% |
| Northern Locality | 10.9% | 12.2% | 11.6% | 10.5% | 9.6% | 8.5% |
| South West | 10.0% | 10.5% | 9.8% | 8.6% | 7.8% | 6.2% |
| England | 12.0% | 12.5% | 11.6% | 9.9% | 8.5% | 6.7% |

ESA OR INCAPACITY BENEFIT CLAIMANT RATE

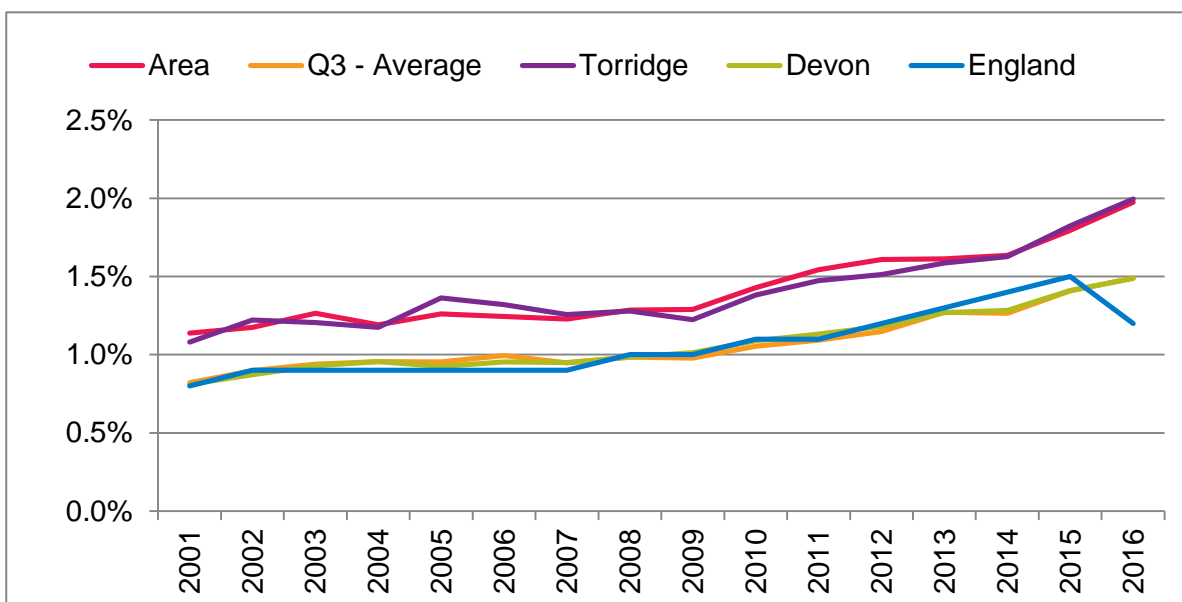
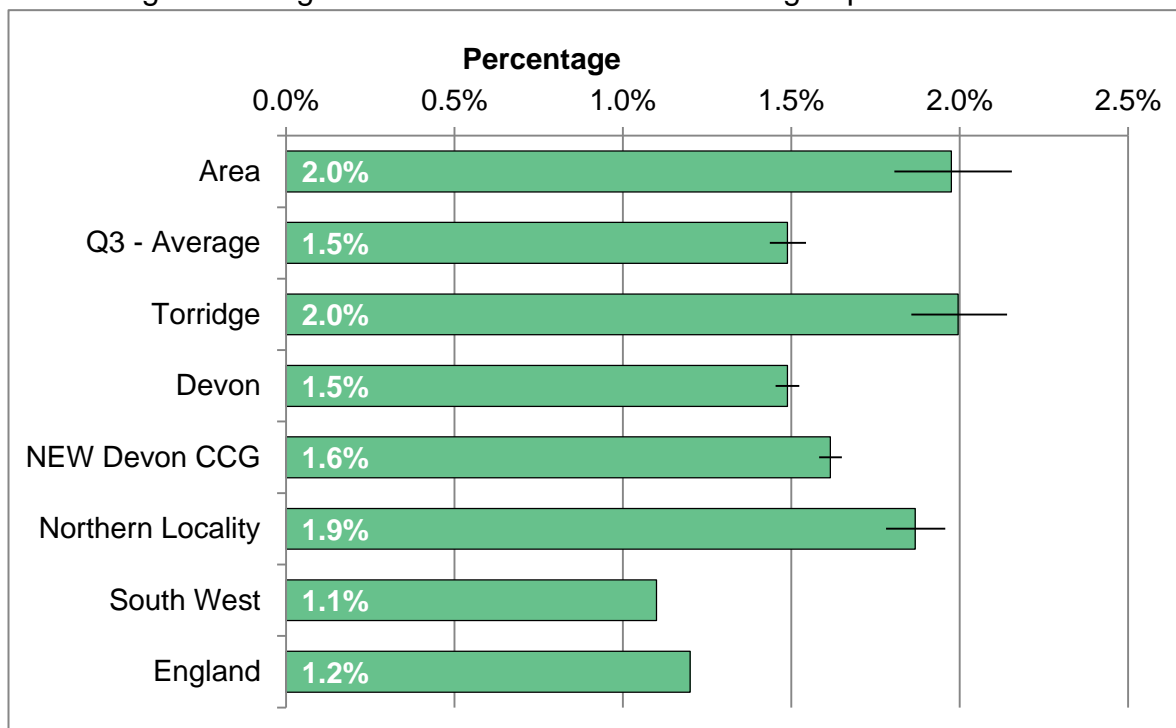
Percentage receiving employment support allowance or incapacity benefit.



| Area | 2011 | 2012 | 2013 | 2014 | 2015 | 2016 |
|-------------------|------|------|------|------|------|------|
| Total claimants | 1815 | 1845 | 1720 | 1720 | 1685 | 1695 |
| Area rate | 7.2% | 7.3% | 6.8% | 6.9% | 6.7% | 6.8% |
| Q3 - Average | 5.2% | 5.2% | 5.0% | 4.9% | 4.9% | 4.9% |
| Torridge | 6.6% | 6.6% | 6.3% | 6.2% | 6.3% | 6.4% |
| Devon | 5.5% | 5.5% | 5.3% | 5.3% | 5.3% | 5.3% |
| NEW Devon CCG | 6.3% | 6.3% | 6.1% | 6.1% | 6.2% | 6.1% |
| Northern Locality | 6.4% | 6.4% | 6.1% | 6.1% | 6.1% | 6.1% |
| South West | 5.8% | 5.7% | 5.6% | 5.6% | 5.7% | 3.1% |
| England | 6.1% | 6.0% | 5.9% | 5.9% | 6.0% | 3.4% |

CARERS WORKING AGE CLIENT GROUP

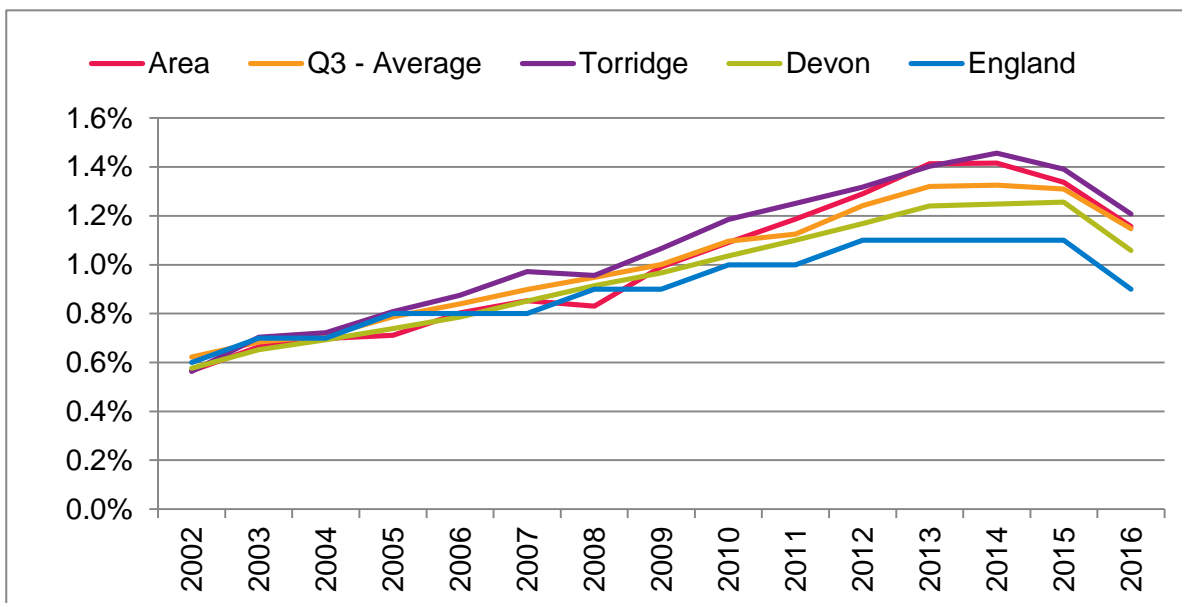
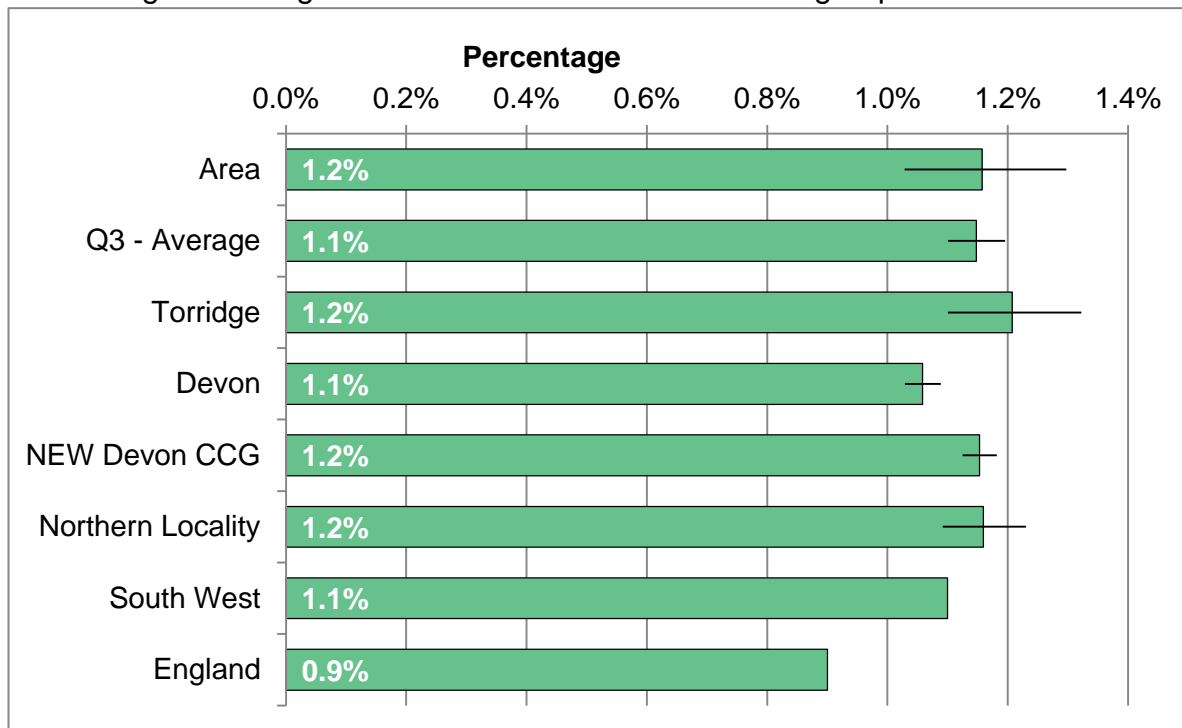
Percentage receiving benefits who are in carers client group.



| Area | 2011 | 2012 | 2013 | 2014 | 2015 | 2016 |
|-------------------|------|------|------|------|------|------|
| Total claimants | 390 | 405 | 405 | 410 | 450 | 495 |
| Area rate | 1.5% | 1.6% | 1.6% | 1.6% | 1.8% | 2.0% |
| Q3 - Average | 1.1% | 1.1% | 1.3% | 1.3% | 1.4% | 1.5% |
| Torridge | 1.5% | 1.5% | 1.6% | 1.6% | 1.8% | 2.0% |
| Devon | 1.1% | 1.2% | 1.3% | 1.3% | 1.4% | 1.5% |
| NEW Devon CCG | 1.2% | 1.3% | 1.4% | 1.4% | 1.5% | 1.6% |
| Northern Locality | 1.4% | 1.4% | 1.5% | 1.5% | 1.7% | 1.9% |
| South West | 1.0% | 1.1% | 1.2% | 1.2% | 1.3% | 1.1% |
| England | 1.1% | 1.2% | 1.3% | 1.4% | 1.5% | 1.2% |

DISABLED WORKING AGE CLIENT GROUP

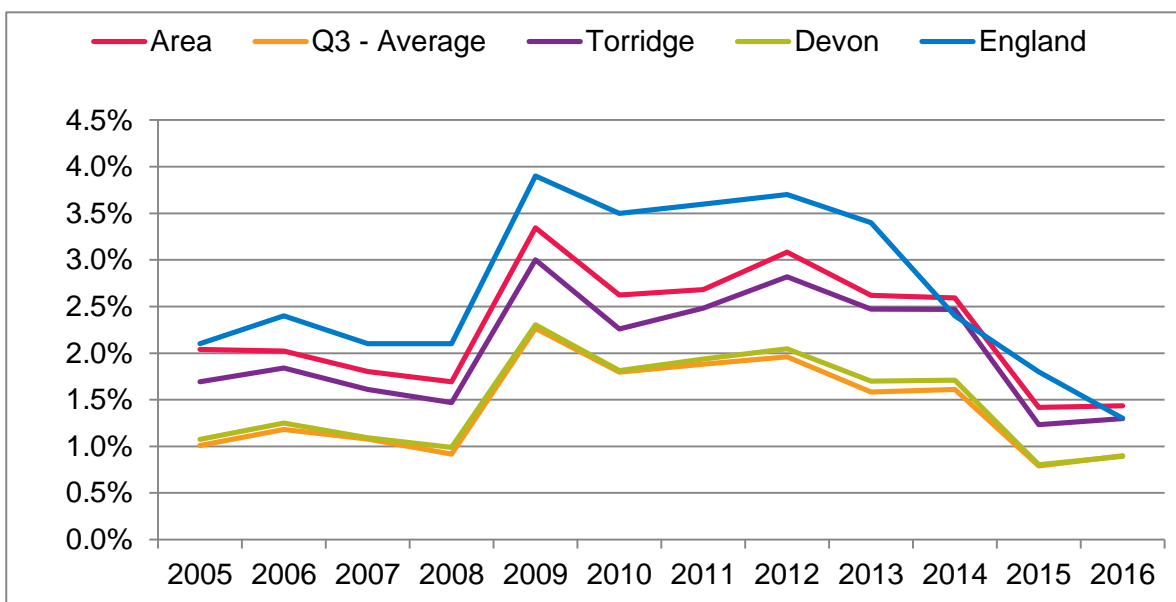
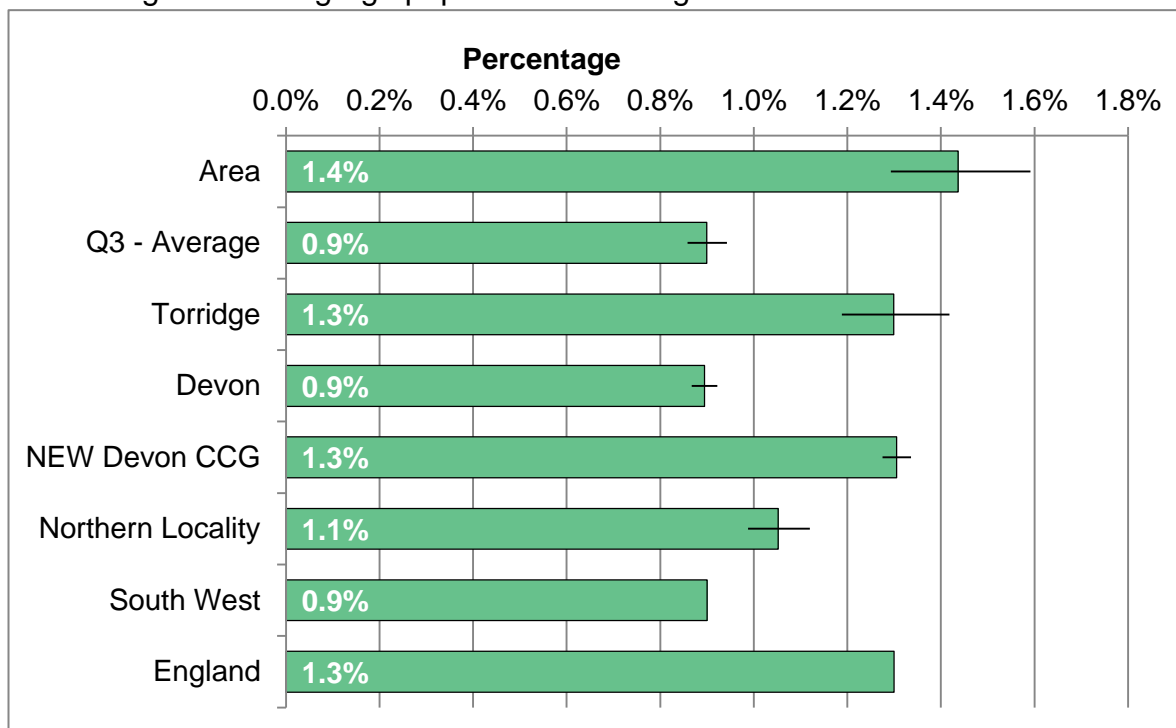
Percentage receiving benefits who are in disabled client group.



| Area | 2011 | 2012 | 2013 | 2014 | 2015 | 2016 |
|-------------------|------|------|------|------|------|------|
| Total claimants | 300 | 325 | 355 | 355 | 335 | 290 |
| Area rate | 1.2% | 1.3% | 1.4% | 1.4% | 1.3% | 1.2% |
| Q3 - Average | 1.1% | 1.2% | 1.3% | 1.3% | 1.3% | 1.1% |
| Torridge | 1.3% | 1.3% | 1.4% | 1.5% | 1.4% | 1.2% |
| Devon | 1.1% | 1.2% | 1.2% | 1.2% | 1.3% | 1.1% |
| NEW Devon CCG | 1.2% | 1.3% | 1.4% | 1.4% | 1.4% | 1.2% |
| Northern Locality | 1.2% | 1.2% | 1.4% | 1.4% | 1.3% | 1.2% |
| South West | 1.0% | 1.1% | 1.2% | 1.2% | 1.2% | 1.1% |
| England | 1.0% | 1.1% | 1.1% | 1.1% | 1.1% | 0.9% |

JOBSEEKERS ALLOWANCE CLAIMANT RATE

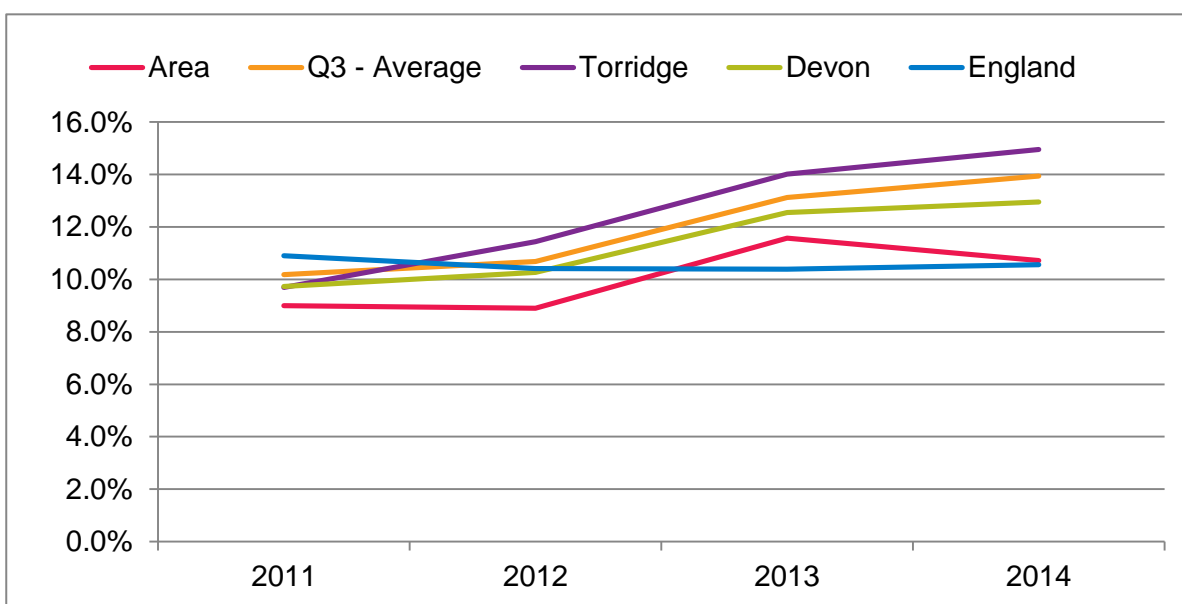
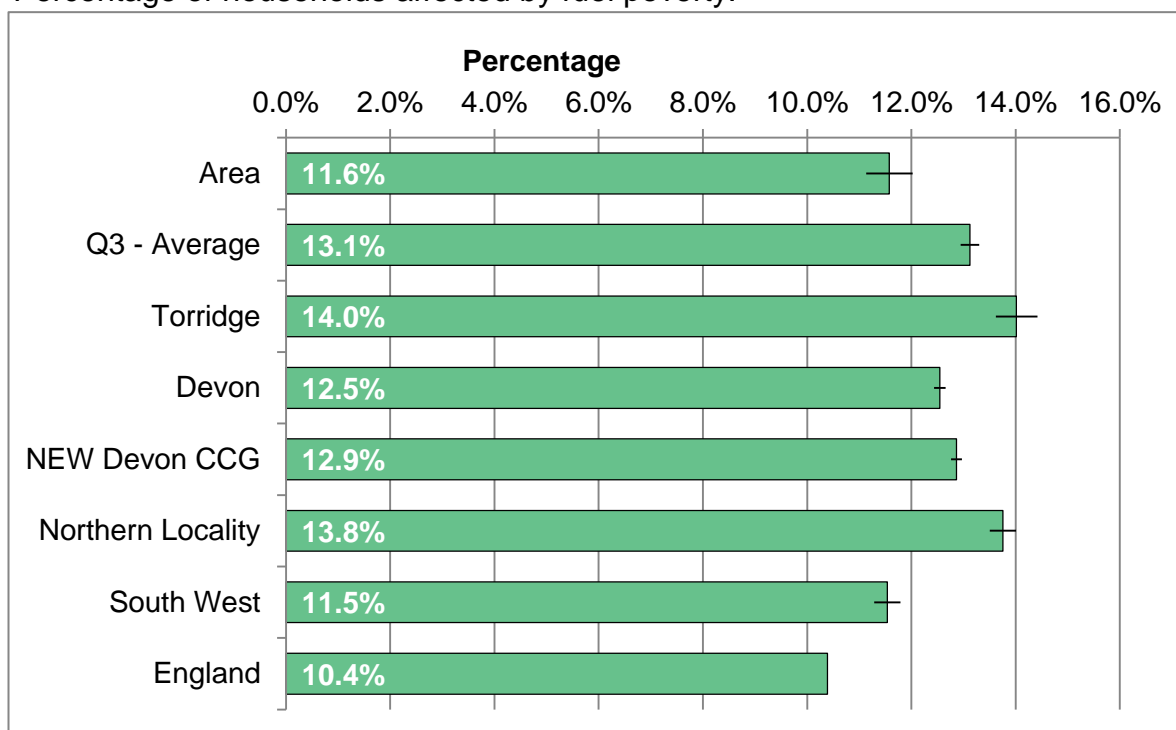
Percentage of working-age population receiving Jobseekers Allowance.



| Area | 2011 | 2012 | 2013 | 2014 | 2015 | 2016 |
|-------------------|------|------|------|------|------|------|
| Total claimants | 678 | 777 | 661 | 650 | 355 | 360 |
| Area rate | 2.7% | 3.1% | 2.6% | 2.6% | 1.4% | 1.4% |
| Q3 - Average | 1.9% | 2.0% | 1.6% | 1.6% | 0.8% | 0.9% |
| Torridge | 2.5% | 2.8% | 2.5% | 2.5% | 1.2% | 1.3% |
| Devon | 1.9% | 2.0% | 1.7% | 1.7% | 0.8% | 0.9% |
| NEW Devon CCG | 2.5% | 2.6% | 2.2% | 2.2% | 1.2% | 1.3% |
| Northern Locality | 2.1% | 2.3% | 2.0% | 2.0% | 0.9% | 1.1% |
| South West | 2.4% | 2.6% | 2.3% | 1.5% | 1.1% | 0.9% |
| England | 3.6% | 3.7% | 3.4% | 2.4% | 1.8% | 1.3% |

FUEL POVERTY

Percentage of households affected by fuel poverty.

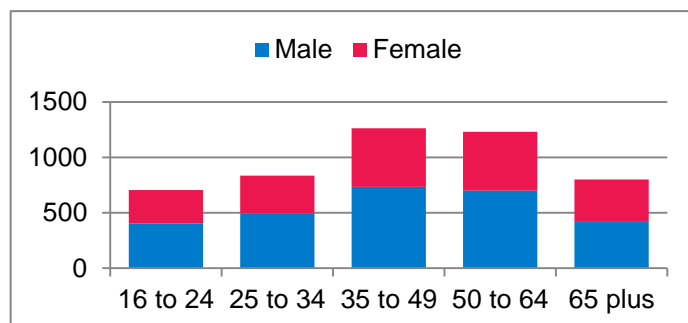


| Area | 2011 | 2012 | 2013 | 2014 |
|----------------------|-------|-------|-------|-------|
| Fuel poor households | 1691 | 1749 | 2317 | 2145 |
| Area rate | 9.0% | 8.9% | 11.6% | 10.7% |
| Q3 - Average | 10.2% | 10.7% | 13.1% | 13.9% |
| Torridge | 9.7% | 11.4% | 14.0% | 15.0% |
| Devon | 9.7% | 10.3% | 12.5% | 13.0% |
| NEW Devon CCG | 9.8% | 10.3% | 12.9% | 13.0% |
| Northern Locality | 9.9% | 11.2% | 13.8% | 14.3% |
| South West | 9.4% | 9.4% | 11.5% | 12.2% |
| England | 10.9% | 10.4% | 10.4% | 10.6% |

HEALTH-RELATED BEHAVIOUR ESTIMATES

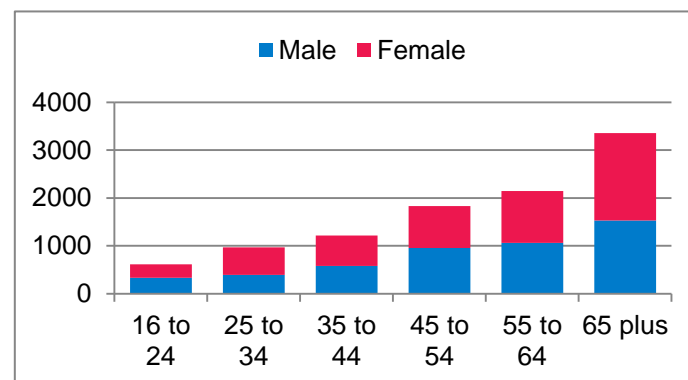
Smoking: Estimated number of current smokers aged 16 and over

| Age | Male | Female | Total |
|----------|-------|--------|-------|
| 16 to 24 | 404 | 301 | 705 |
| 25 to 34 | 494 | 343 | 837 |
| 35 to 49 | 734 | 530 | 1264 |
| 50 to 64 | 701 | 529 | 1230 |
| 65 plus | 425 | 376 | 801 |
| Total | 2758 | 2079 | 4837 |
| Percent | 15.8% | 10.8% | 13.2% |



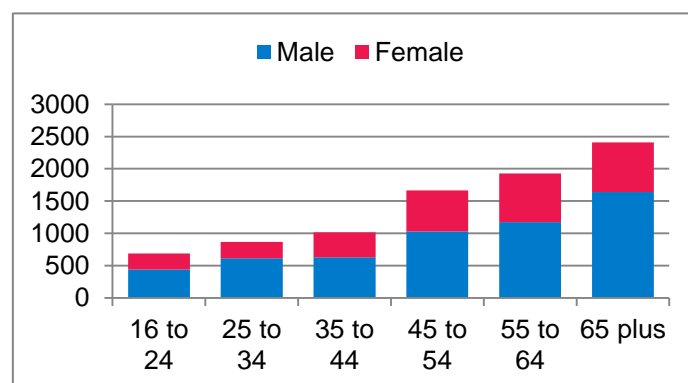
Obesity: Estimated number aged 16 and over with a BMI of 30 or more

| Age | Male | Female | Total |
|----------|-------|--------|-------|
| 16 to 24 | 329 | 285 | 614 |
| 25 to 34 | 394 | 573 | 967 |
| 35 to 44 | 577 | 638 | 1215 |
| 45 to 54 | 952 | 879 | 1831 |
| 55 to 64 | 1062 | 1085 | 2147 |
| 65 plus | 1528 | 1826 | 3354 |
| Total | 4842 | 5286 | 10128 |
| Percent | 27.7% | 27.5% | 27.6% |



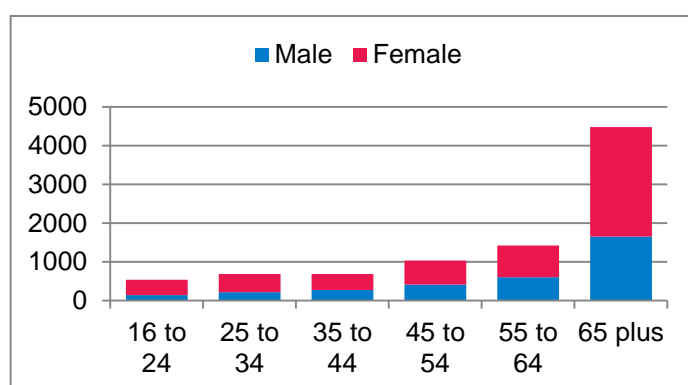
Alcohol: Increasing and higher risk drinking in persons aged 16 and over

| Age | Male | Female | Total |
|----------|-------|--------|-------|
| 16 to 24 | 442 | 248 | 690 |
| 25 to 34 | 614 | 253 | 867 |
| 35 to 44 | 630 | 387 | 1017 |
| 45 to 54 | 1030 | 635 | 1665 |
| 55 to 64 | 1172 | 756 | 1928 |
| 65 plus | 1639 | 771 | 2410 |
| Total | 5527 | 3050 | 8577 |
| Percent | 31.6% | 15.9% | 23.4% |



Physical Inactivity: Less than 30 minutes of moderate physical activity per week

| Age | Male | Female | Total |
|----------|-------|--------|-------|
| 16 to 24 | 134 | 400 | 534 |
| 25 to 34 | 210 | 474 | 684 |
| 35 to 44 | 272 | 408 | 680 |
| 45 to 54 | 412 | 616 | 1028 |
| 55 to 64 | 597 | 820 | 1417 |
| 65 plus | 1647 | 2831 | 4478 |
| Total | 3272 | 5549 | 8821 |
| Percent | 18.7% | 28.9% | 24.1% |



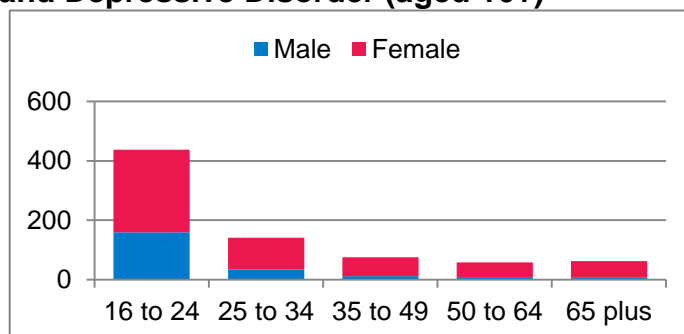
MENTAL ILL HEALTH ESTIMATES

Modelled Self-Reported Wellbeing Estimates

| Measure | Number | Percent | Criteria |
|-----------------------------|--------|---------|----------------------------|
| Low Happiness Score | 12035 | 28% | 0 to 4 on a 10 point scale |
| Low Worthwhile Score | 8141 | 19% | 0 to 4 on a 10 point scale |
| Low Life Satisfaction Score | 9998 | 23% | 0 to 4 on a 10 point scale |

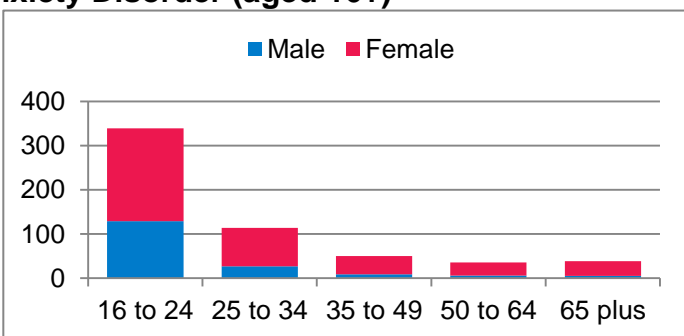
Estimated Prevalence of Mixed Anxiety and Depressive Disorder (aged 16+)

| Age | Male | Female | Total |
|----------|------|--------|-------|
| 16 to 24 | 160 | 277 | 437 |
| 25 to 34 | 35 | 106 | 141 |
| 35 to 49 | 12 | 64 | 76 |
| 50 to 64 | 9 | 49 | 58 |
| 65 plus | 7 | 56 | 63 |
| Total | 223 | 552 | 775 |
| Percent | 5.8% | 9.5% | 7.8% |



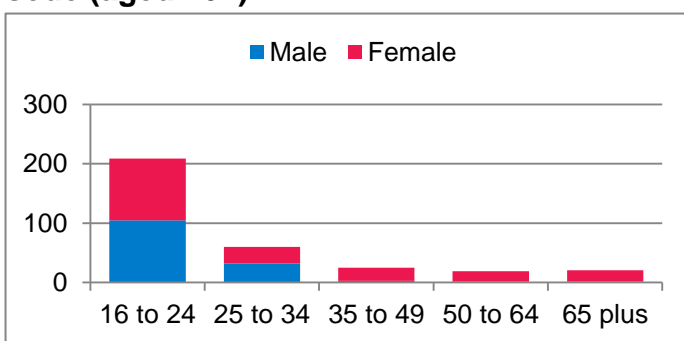
Estimated Prevalence of Generalised Anxiety Disorder (aged 16+)

| Age | Male | Female | Total |
|----------|------|--------|-------|
| 16 to 24 | 129 | 210 | 339 |
| 25 to 34 | 27 | 87 | 114 |
| 35 to 49 | 9 | 41 | 50 |
| 50 to 64 | 6 | 30 | 36 |
| 65 plus | 5 | 34 | 39 |
| Total | 176 | 402 | 578 |
| Percent | 4.7% | 6.5% | 5.7% |



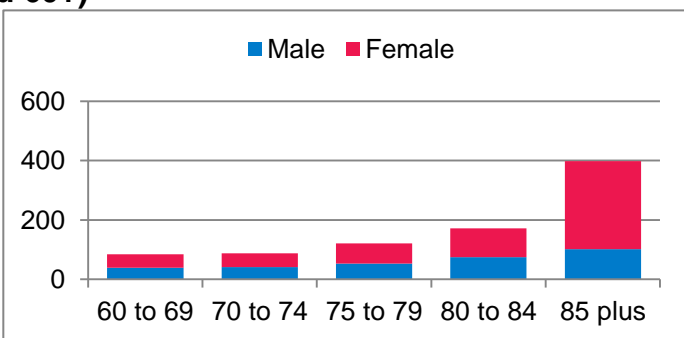
Estimated Prevalence of Depressive Episode (aged 16+)

| Age | Male | Female | Total |
|----------|------|--------|-------|
| 16 to 24 | 105 | 104 | 209 |
| 25 to 34 | 32 | 28 | 60 |
| 35 to 49 | 3 | 22 | 25 |
| 50 to 64 | 2 | 17 | 19 |
| 65 plus | 2 | 19 | 21 |
| Total | 144 | 190 | 334 |
| Percent | 2.9% | 3.5% | 3.2% |



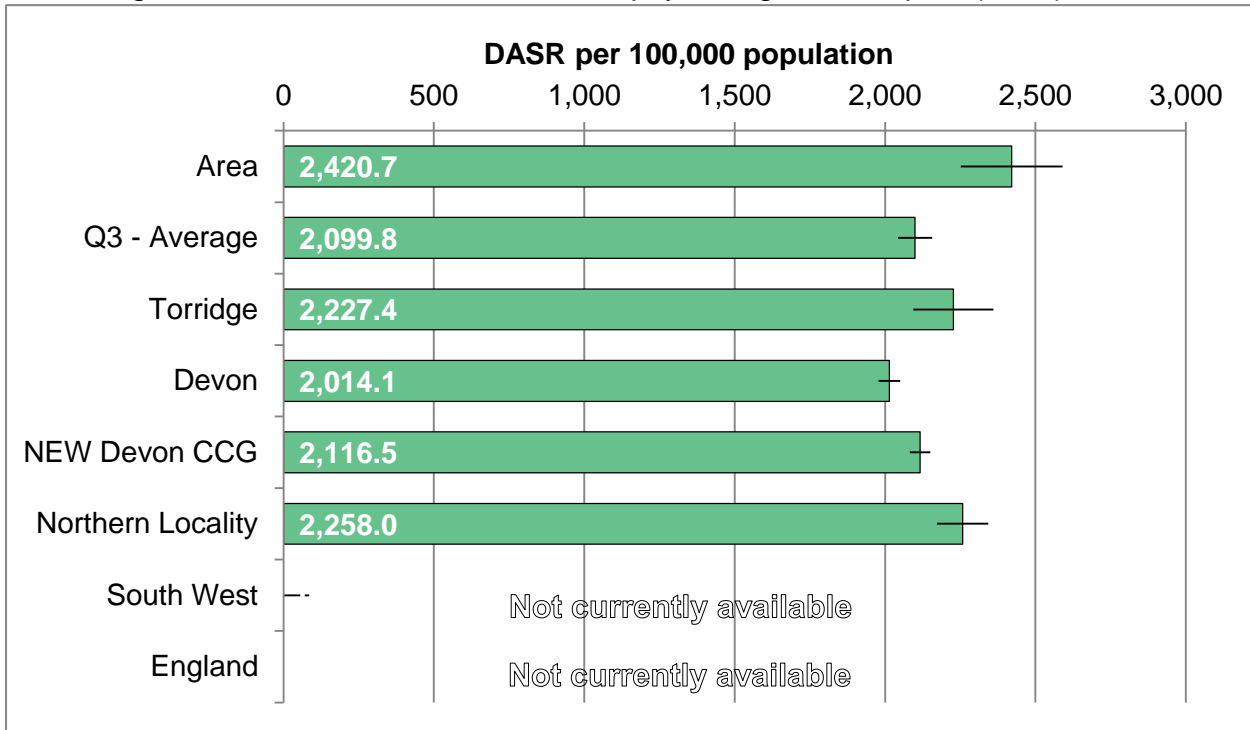
Estimated Prevalence of Dementia (aged 60+)

| Age | Male | Female | Total |
|----------|------|--------|-------|
| 60 to 69 | 39 | 45 | 84 |
| 70 to 74 | 41 | 47 | 88 |
| 75 to 79 | 53 | 68 | 121 |
| 80 to 84 | 75 | 97 | 172 |
| 85 plus | 102 | 296 | 398 |
| Total | 310 | 553 | 863 |
| Percent | 4.5% | 6.9% | 5.8% |



ACCESS TO PSYCHOLOGICAL THERAPIES

Direct-age standardised rate of referrals to psychological therapies (IAPT)



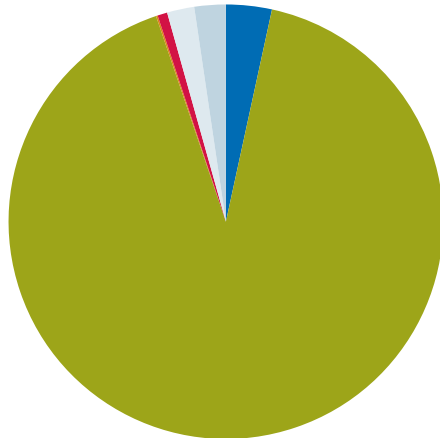
Trend information not currently available

| Area | 2015 |
|-------------------|--------|
| Number per annum | 786 |
| Area rate | 2420.7 |
| Q3 - Average | 2099.8 |
| Torridge | 2227.4 |
| Devon | 2014.1 |
| NEW Devon CCG | 2116.5 |
| Northern Locality | 2258.0 |
| South West | N/A |
| England | N/A |

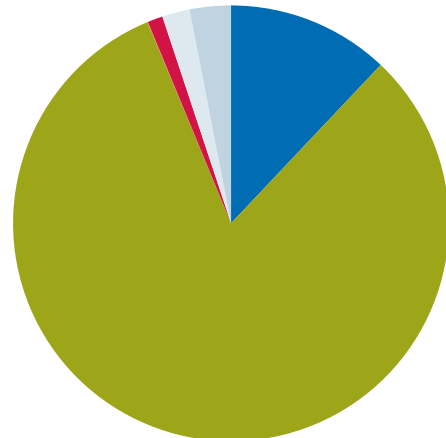
USE OF HEALTH SERVICES

Number and share of population using different health care providers

Non-Elective Admissions 2016



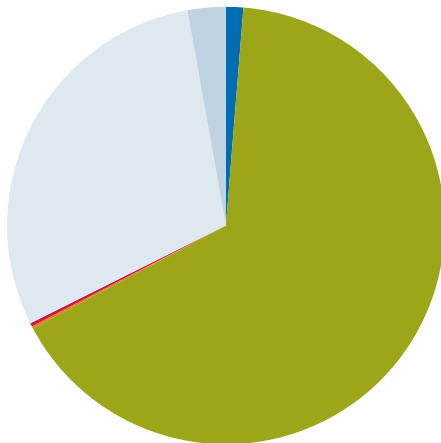
Elective Admissions 2016



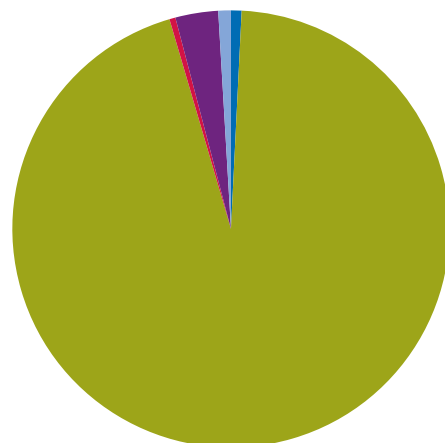
| Location | No. P.A. |
|------------------|----------|
| RD&E Exeter Hosp | 168 |
| Barnstaple Hosp | 4507 |
| Torbay Hosp | 6 |
| Plymouth Hosp | 36 |
| Community Hosp | 100 |
| Outside Devon | 115 |
| Total | 4932 |

| Location | No. P.A. |
|------------------|----------|
| RD&E Exeter Hosp | 928 |
| Barnstaple Hosp | 6291 |
| Torbay Hosp | <5 |
| Plymouth Hosp | 87 |
| Community Hosp | 158 |
| Outside Devon | 235 |
| Total | 7702 |

Urgent Care 2016



Births 2010 to 2015



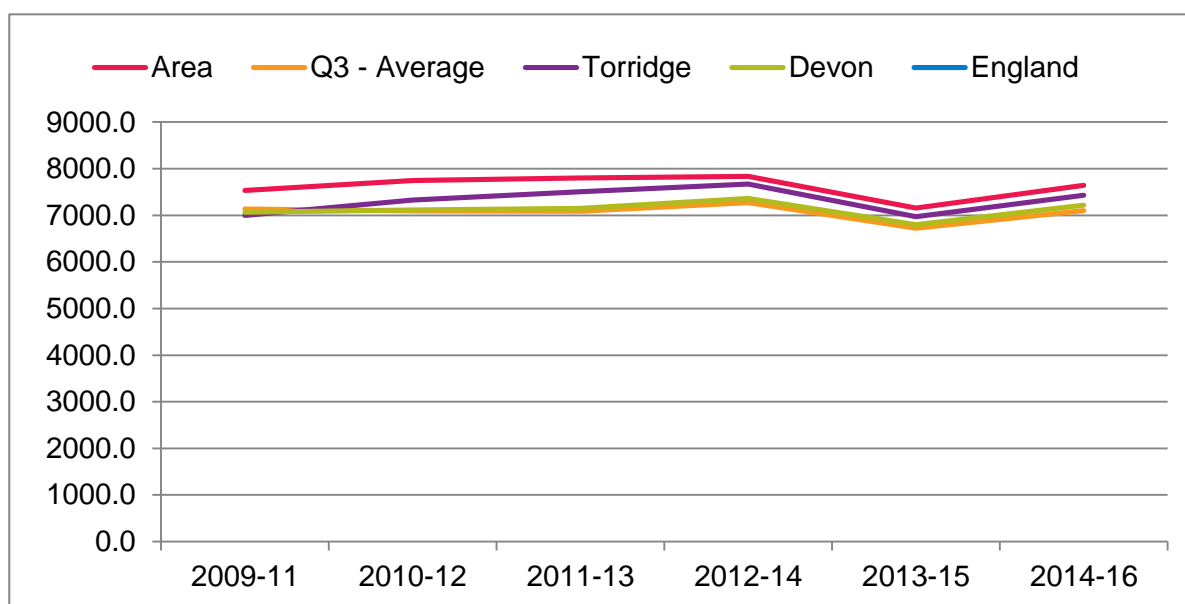
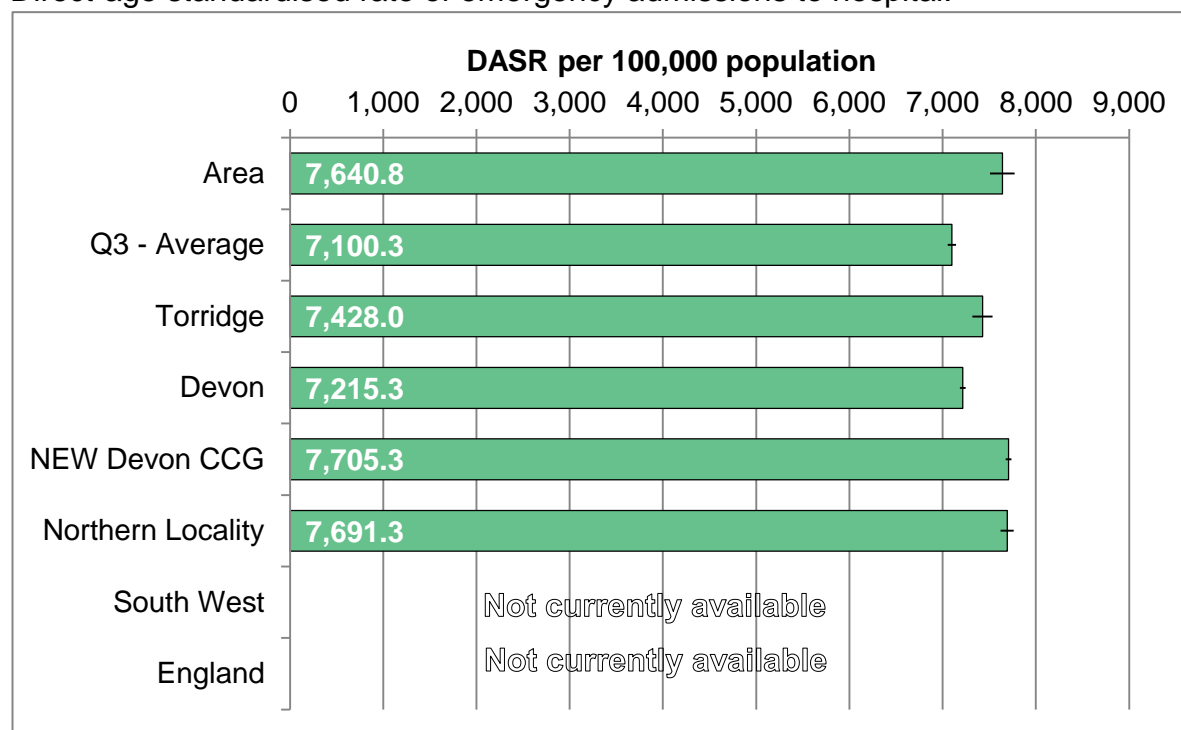
| Location* | No. P.A. |
|----------------|----------|
| Exeter A&E | 198 |
| Barnstaple A&E | 10222 |
| Torbay A&E | 26 |
| Plymouth A&E | 39 |
| Local MIU/WIC | 4583 |
| Outside Devon | 437 |
| Total | 15505 |

| Location | 2010-15 |
|------------------|---------|
| RD&E Exeter Hosp | <5 |
| Barnstaple Hosp | 2543 |
| Torbay Hosp | <5 |
| Plymouth Hosp | 12 |
| Home | 85 |
| Community Hosp | <5 |
| Outside Devon | 25 |
| Total | 2686 |

* A&E is accident and emergency, MIU is minor injury unit, WIC is walk-in centre

EMERGENCY ADMISSIONS

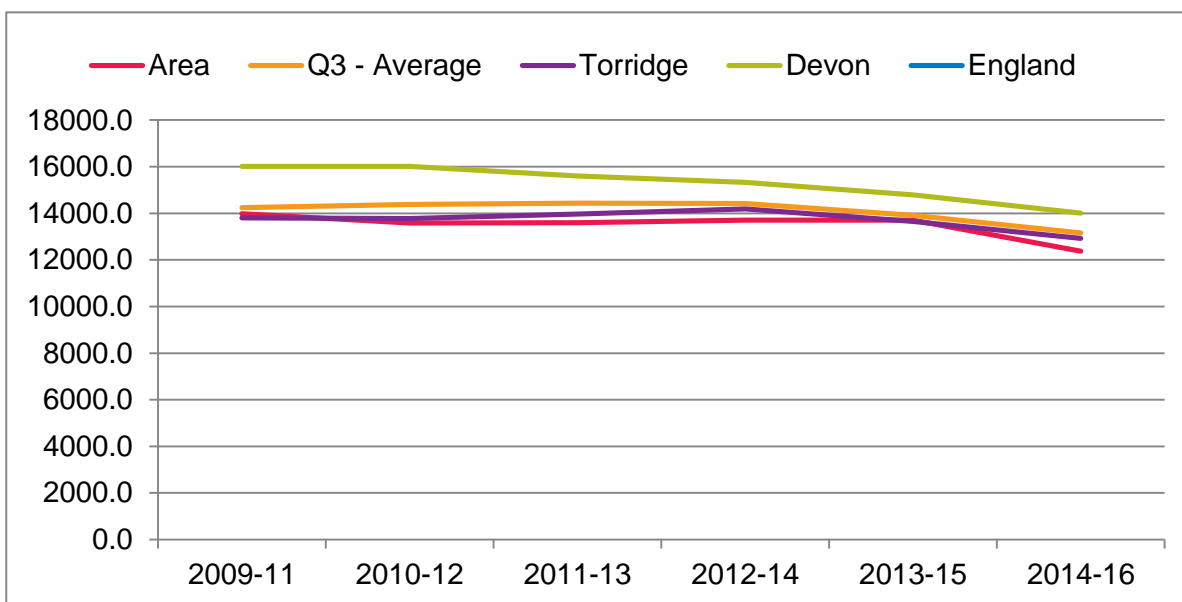
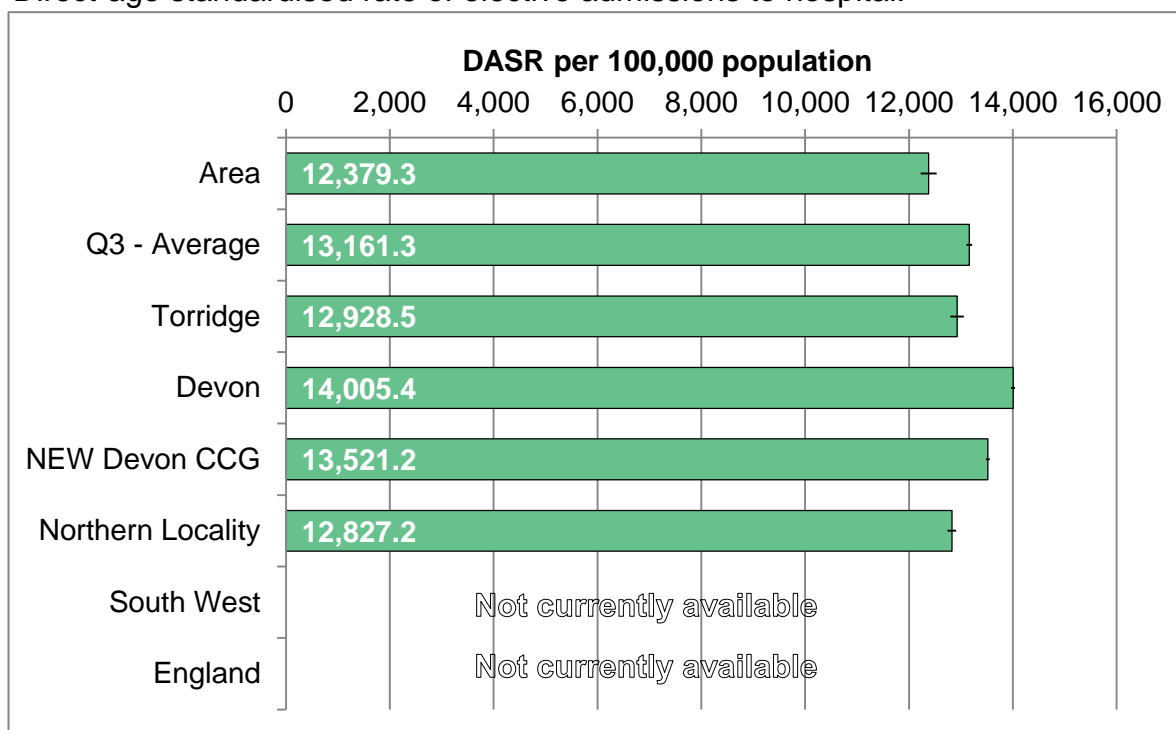
Direct-age standardised rate of emergency admissions to hospital.



| Area | 2009-11 | 2010-12 | 2011-13 | 2012-14 | 2013-15 | 2014-16 |
|-------------------|---------|---------|---------|---------|---------|---------|
| Average per annum | 4073 | 4222 | 4300 | 4356 | 4439 | 4589 |
| Area rate | 7533.7 | 7744.0 | 7798.5 | 7836.2 | 7152.7 | 7640.8 |
| Q3 - Average | 7137.9 | 7097.2 | 7089.4 | 7273.4 | 6720.4 | 7100.3 |
| Torridge | 6995.8 | 7330.9 | 7505.0 | 7669.5 | 6973.7 | 7428.0 |
| Devon | 7066.4 | 7114.5 | 7151.7 | 7359.2 | 6800.7 | 7215.3 |
| NEW Devon CCG | 7946.6 | 7768.2 | 7714.3 | 7922.3 | 7239.9 | 7705.3 |
| Northern Locality | 7432.7 | 7689.3 | 7945.5 | 7980.0 | 7264.0 | 7691.3 |
| South West | N/A | N/A | N/A | N/A | N/A | N/A |
| England | N/A | N/A | N/A | N/A | N/A | N/A |

ELECTIVE ADMISSIONS

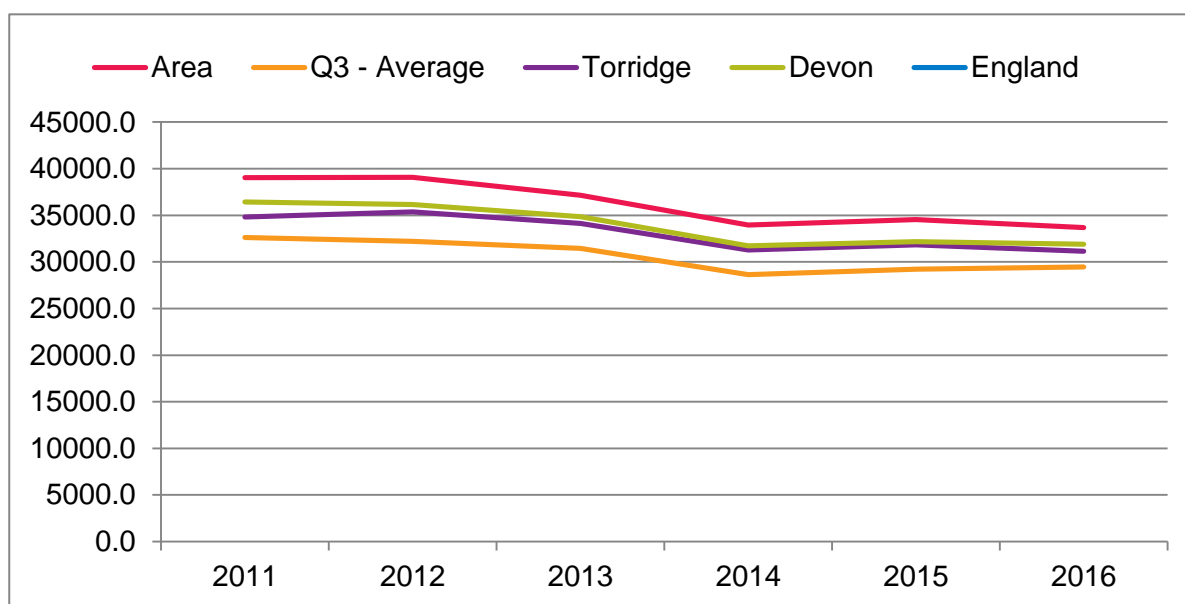
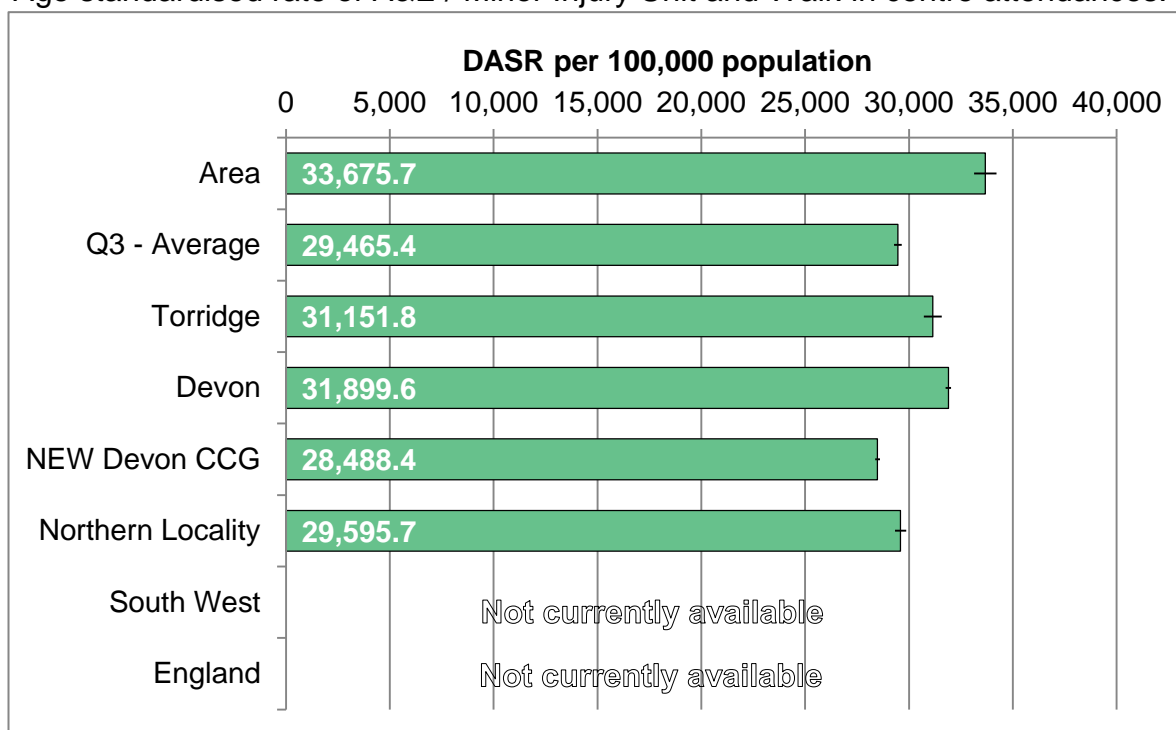
Direct-age standardised rate of elective admissions to hospital.



| Area | 2009-11 | 2010-12 | 2011-13 | 2012-14 | 2013-15 | 2014-16 |
|-------------------|---------|---------|---------|---------|---------|---------|
| Average per annum | 7936 | 7832 | 7947 | 25005 | 24977 | 24840 |
| Area rate | 13988.4 | 13588.0 | 13595.6 | 13705.8 | 13705.8 | 12379.3 |
| Q3 - Average | 14245.8 | 14376.4 | 14436.0 | 14428.0 | 13917.0 | 13161.3 |
| Torridge | 13804.7 | 13782.7 | 13966.7 | 14185.7 | 13647.1 | 12928.5 |
| Devon | 16010.9 | 16017.7 | 15609.2 | 15324.6 | 14791.8 | 14005.4 |
| NEW Devon CCG | 15023.0 | 15123.6 | 14902.6 | 14719.9 | 14240.4 | 13521.2 |
| Northern Locality | 14025.2 | 13934.2 | 14034.1 | 14087.1 | 13556.3 | 12827.2 |
| South West | N/A | N/A | N/A | N/A | N/A | N/A |
| England | N/A | N/A | N/A | N/A | N/A | N/A |

URGENT CARE ATTENDANCES

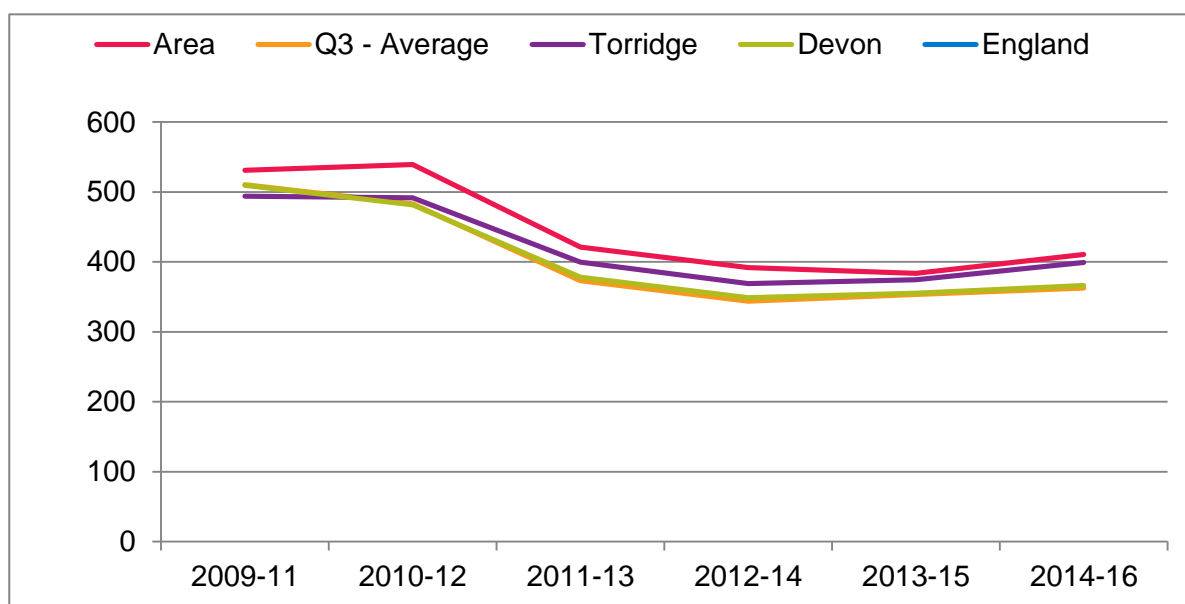
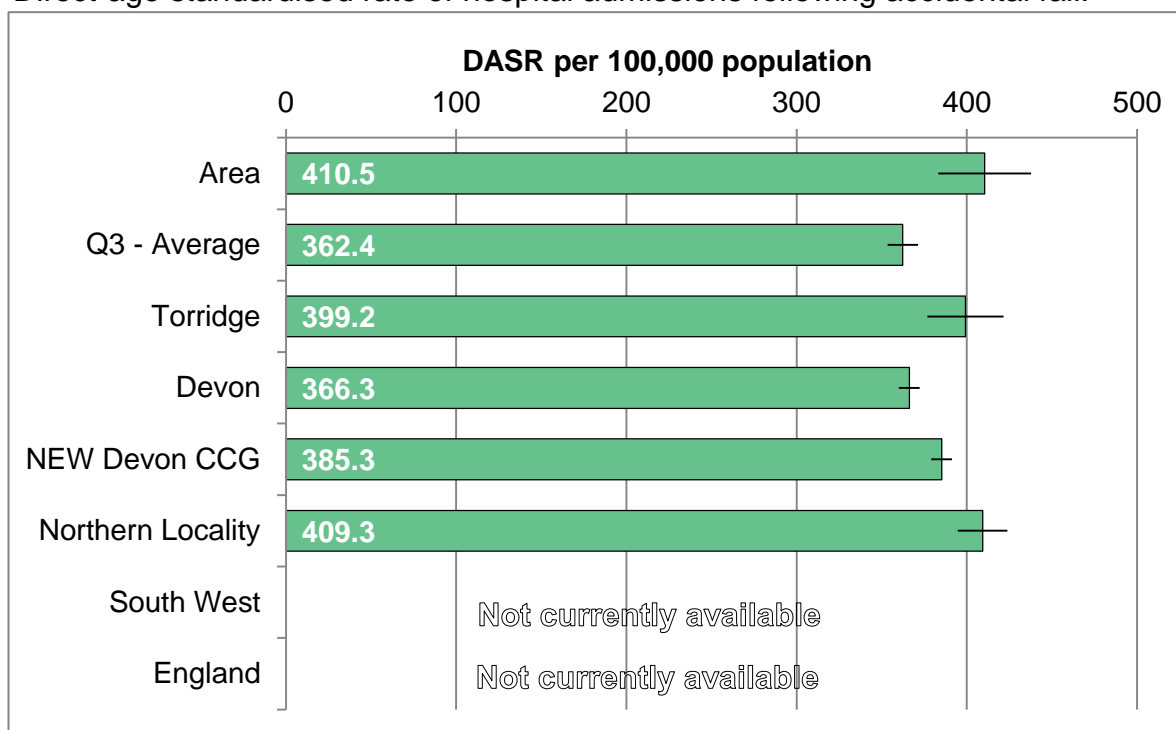
Age standardised rate of A&E / Minor Injury Unit and Walk-in centre attendances.



| Area | 2011 | 2012 | 2013 | 2014 | 2015 | 2016 |
|-------------------|---------|---------|---------|---------|---------|---------|
| Average per annum | 16380 | 16605 | 15800 | 15552 | 14830 | 15166 |
| Area rate | 39031.6 | 39080.6 | 37152.7 | 33960.1 | 34528.5 | 33675.7 |
| Q3 - Average | 32625.9 | 32208.7 | 31448.8 | 28645.1 | 29204.9 | 29465.4 |
| Torridge | 34821.6 | 35358.0 | 34141.7 | 31286.6 | 31847.4 | 31151.8 |
| Devon | 36439.2 | 36160.0 | 34846.2 | 31719.6 | 32171.1 | 31899.6 |
| NEW Devon CCG | 30898.1 | 30739.6 | 29684.0 | 26982.6 | 28000.9 | 28488.4 |
| Northern Locality | 33292.1 | 33290.3 | 32423.4 | 29882.6 | 30119.0 | 29595.7 |
| South West | N/A | N/A | N/A | N/A | N/A | N/A |
| England | N/A | N/A | N/A | N/A | N/A | N/A |

ACCIDENTAL FALLS ADMISSIONS

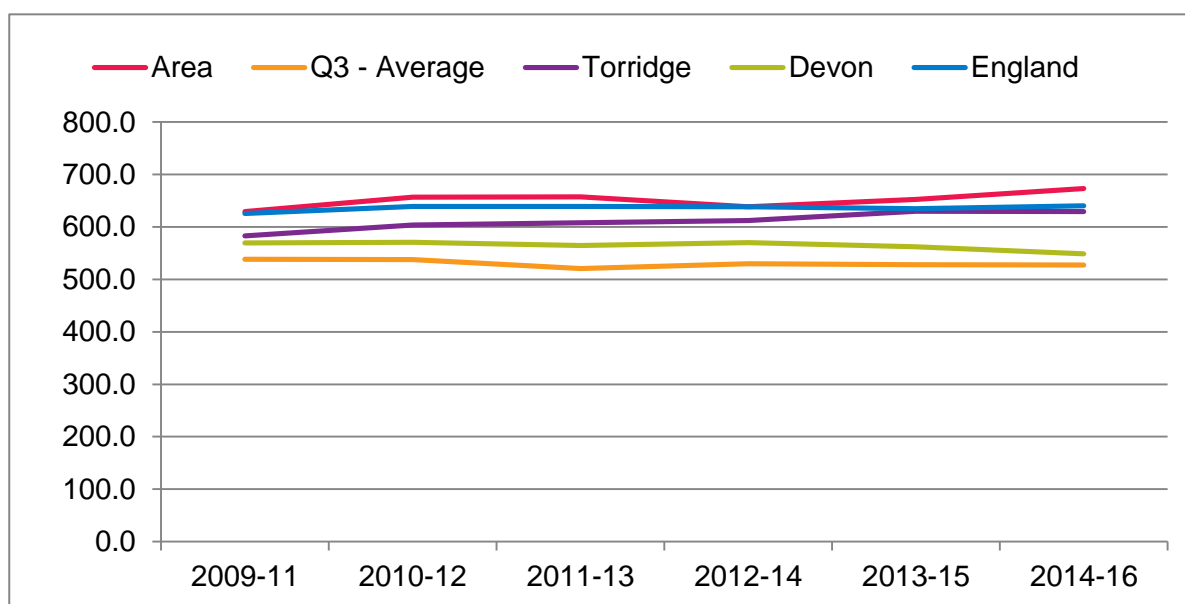
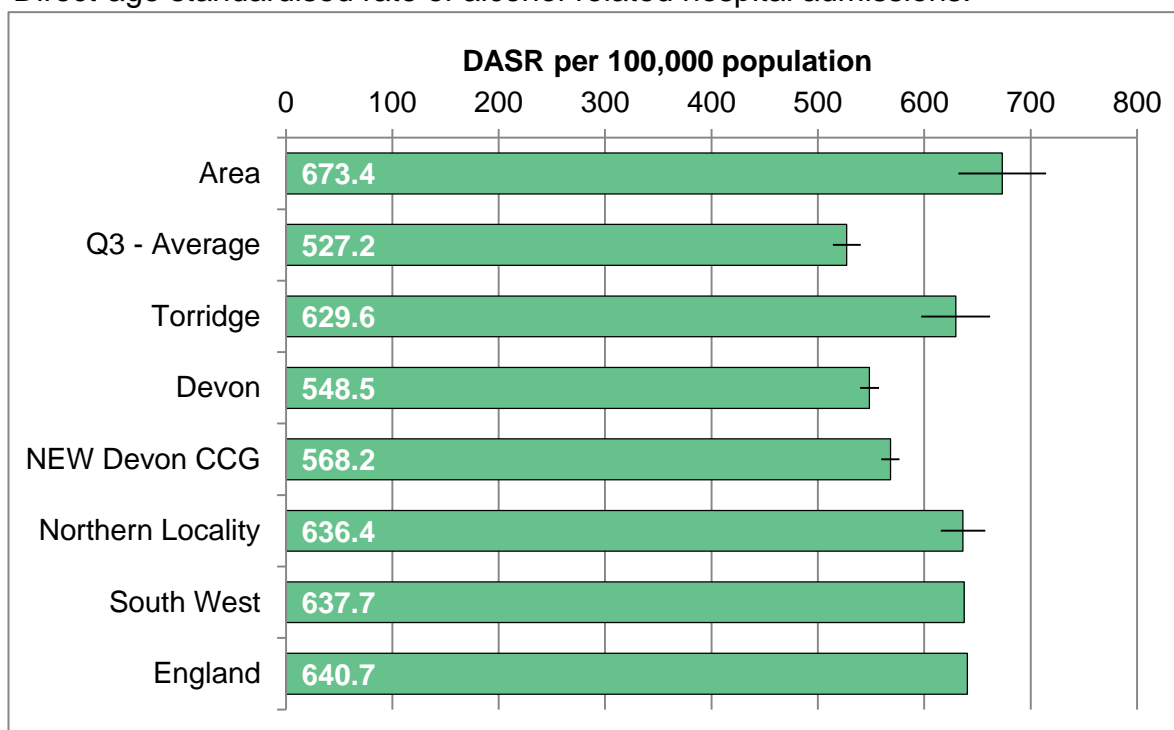
Direct-age standardised rate of hospital admissions following accidental fall.



| Area | 2009-11 | 2010-12 | 2011-13 | 2012-14 | 2013-15 | 2014-16 |
|-------------------|---------|---------|---------|---------|---------|---------|
| Average per annum | 353 | 377 | 292 | 288 | 282 | 291 |
| Area rate | 531.0 | 539.3 | 421.1 | 392.1 | 383.8 | 410.5 |
| Q3 - Average | 510.3 | 483.2 | 373.2 | 343.9 | 353.3 | 362.4 |
| Torridge | 494.0 | 491.7 | 399.6 | 368.8 | 374.3 | 399.2 |
| Devon | 509.4 | 481.7 | 378.3 | 348.9 | 355.1 | 366.3 |
| NEW Devon CCG | 549.1 | 525.0 | 399.4 | 366.1 | 376.0 | 385.3 |
| Northern Locality | 510.6 | 499.2 | 426.7 | 387.2 | 392.6 | 409.3 |
| South West | N/A | N/A | N/A | N/A | N/A | N/A |
| England | N/A | N/A | N/A | N/A | N/A | N/A |

ALCOHOL-RELATED ADMISSIONS

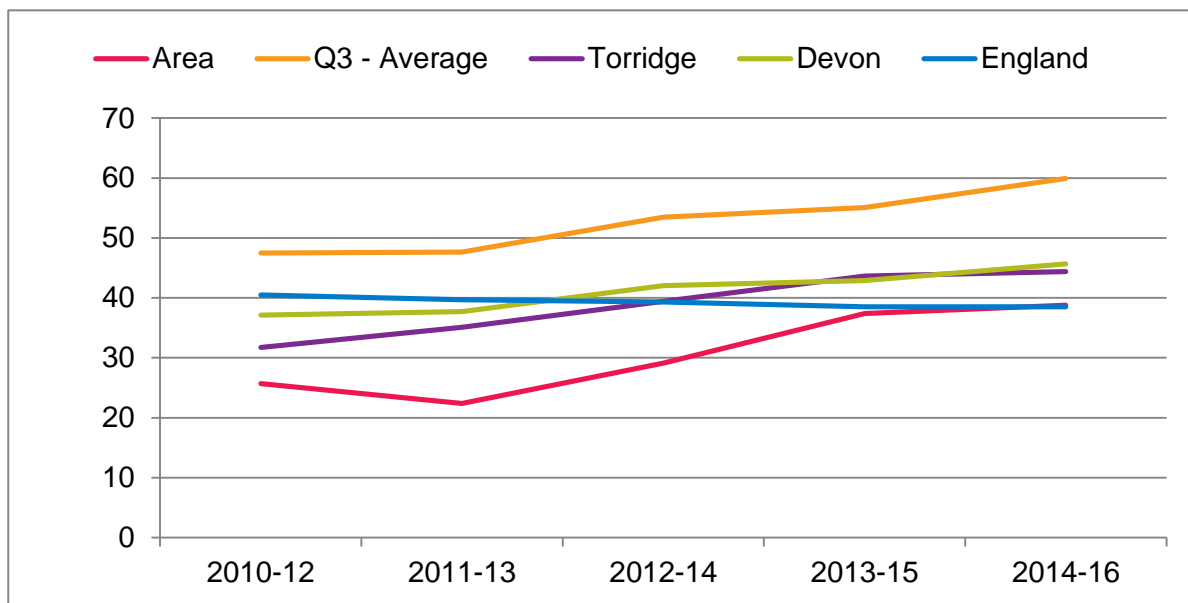
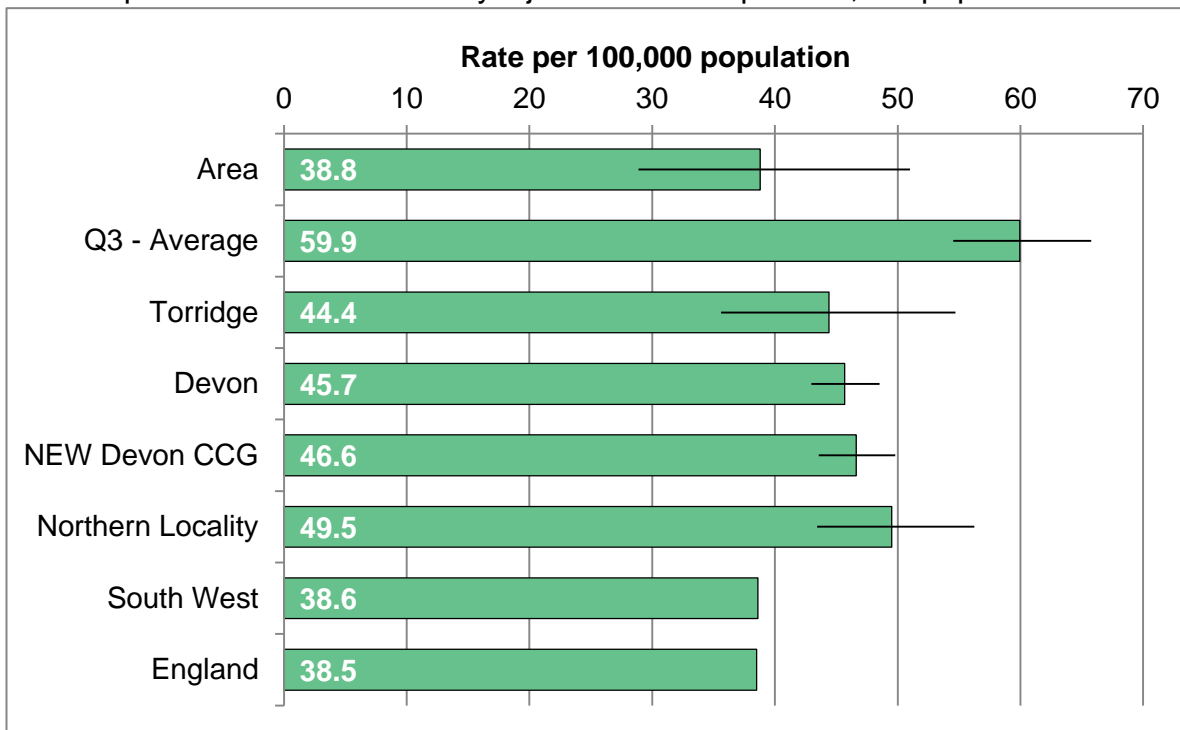
Direct-age standardised rate of alcohol-related hospital admissions.



| Area | 2009-11 | 2010-12 | 2011-13 | 2012-14 | 2013-15 | 2014-16 |
|-------------------|---------|---------|---------|---------|---------|---------|
| Average per annum | 322 | 342 | 336 | 325 | 326 | 341 |
| Area rate | 629.4 | 656.9 | 657.2 | 638.8 | 652.8 | 673.4 |
| Q3 - Average | 538.4 | 537.7 | 521.0 | 530.1 | 528.0 | 527.2 |
| Torridge | 582.8 | 603.7 | 607.8 | 612.5 | 630.1 | 629.6 |
| Devon | 569.4 | 570.8 | 564.8 | 570.0 | 562.4 | 548.5 |
| NEW Devon CCG | 590.3 | 594.2 | 587.1 | 589.6 | 577.7 | 568.2 |
| Northern Locality | 594.3 | 595.8 | 612.7 | 619.5 | 629.9 | 636.4 |
| South West | 635.7 | 641.7 | 637.7 | 628.3 | 627.0 | 637.7 |
| England | 626.0 | 639.0 | 639.3 | 638.3 | 635.0 | 640.7 |

KILLED OR SERIOUSLY INJURED ON ROADS

Rate of persons killed or seriously injured on roads per 100,000 population.

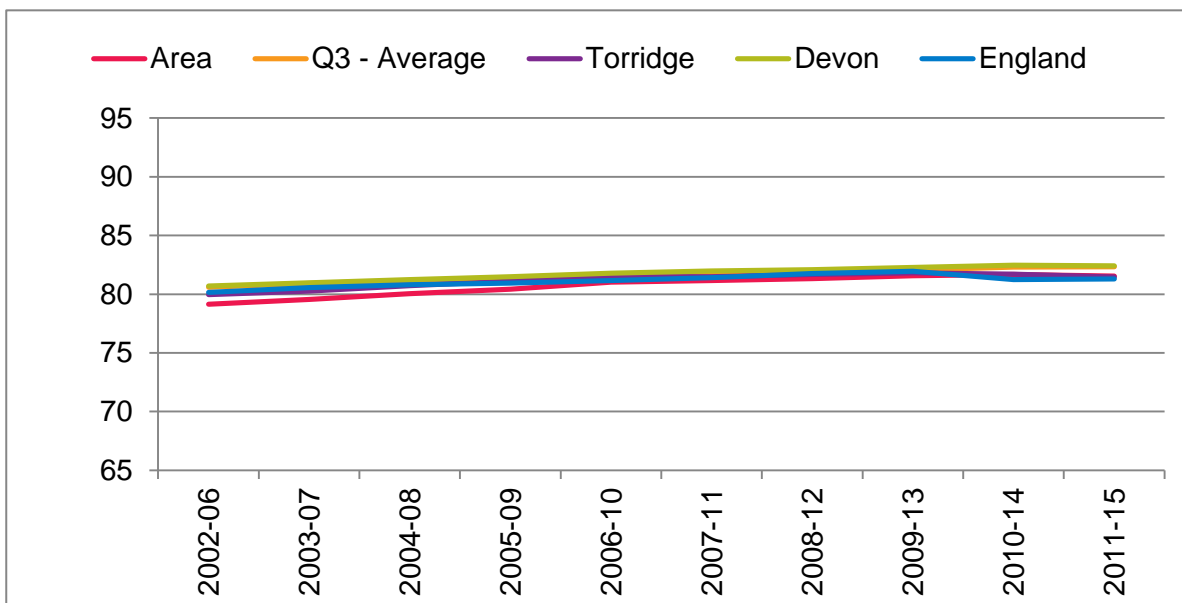
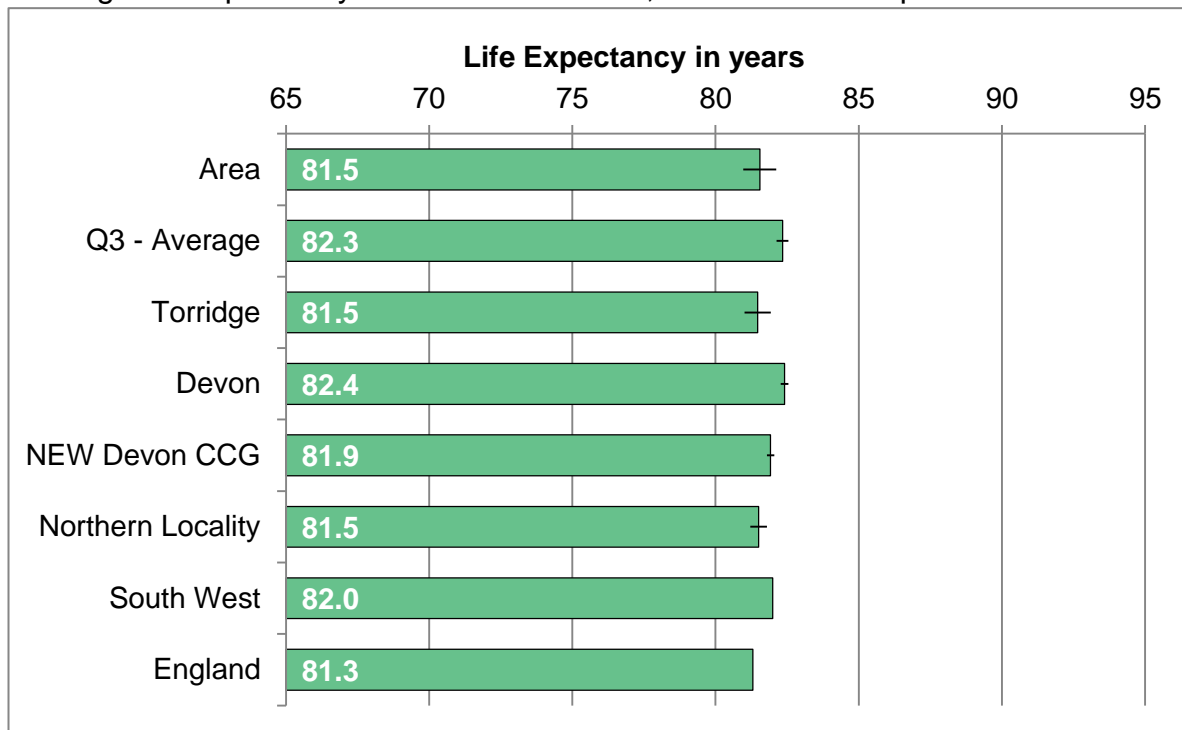


| Area | 2010-12 | 2011-13 | 2012-14 | 2013-15 | 2014-16 |
|-------------------|---------|---------|---------|---------|---------|
| Average per annum | 33 | 29 | 38 | 49 | 51 |
| Area rate | 25.7 | 22.4 | 29.1 | 37.4 | 38.8 |
| Q3 - Average | 47.5 | 47.6 | 53.5 | 55.1 | 59.9 |
| Torridge | 31.7 | 35.1 | 39.4 | 43.7 | 44.4 |
| Devon | 37.1 | 37.7 | 42.0 | 42.9 | 45.7 |
| NEW Devon CCG | 37.3 | 38.5 | 44.2 | 44.8 | 46.6 |
| Northern Locality | 42.0 | 42.7 | 49.2 | 49.7 | 49.5 |
| South West | 37.6 | 37.5 | 38.4 | 38.6 | 38.6 |
| England | 40.5 | 39.7 | 39.3 | 38.5 | 38.5 |

CCG figure is Devon County Council component of CCG only

LIFE EXPECTANCY AT BIRTH

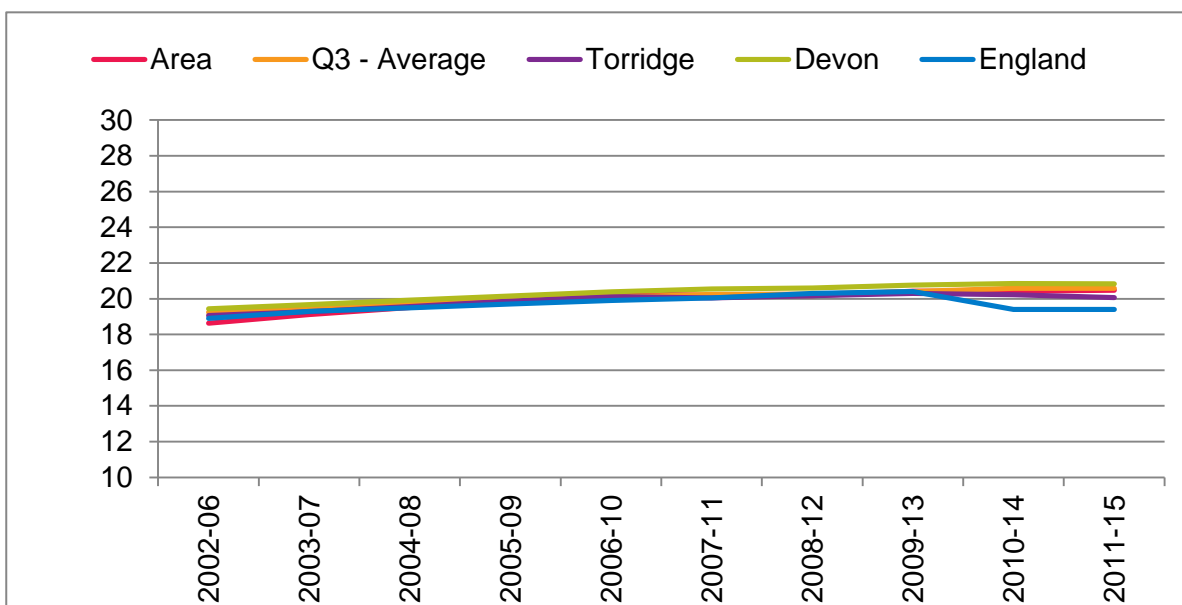
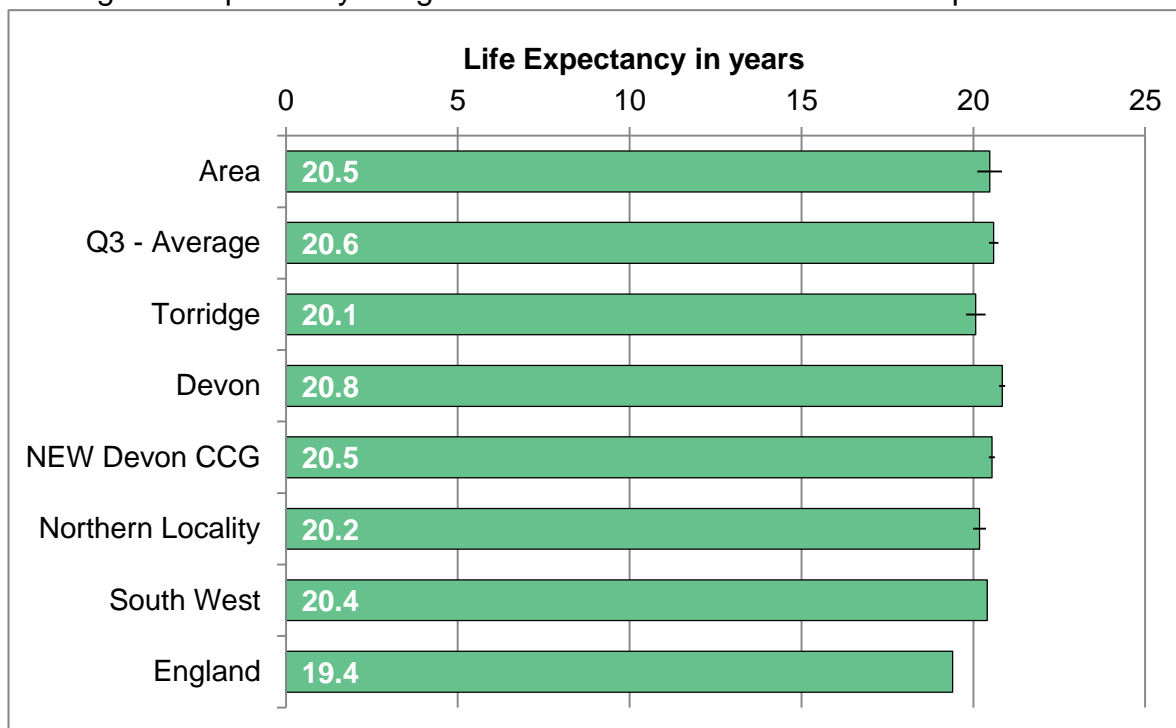
Average life expectancy at birth for residents, combined for all persons.



| Area | 2006-10 | 2007-11 | 2008-12 | 2009-13 | 2010-14 | 2011-15 |
|-------------------|---------|---------|---------|---------|---------|---------|
| Deaths per annum | 486 | 498 | 505 | 505 | 513 | 513 |
| Area rate | 81.0 | 81.2 | 81.3 | 81.6 | 81.7 | 81.5 |
| Q3 - Average | 81.6 | 81.8 | 81.9 | 82.1 | 82.3 | 82.3 |
| Torridge | 81.5 | 81.5 | 81.7 | 81.8 | 81.7 | 81.5 |
| Devon | 81.8 | 82.0 | 82.1 | 82.3 | 82.5 | 82.4 |
| NEW Devon CCG | 81.2 | 81.5 | 81.6 | 81.7 | 81.9 | 81.9 |
| Northern Locality | 81.1 | 81.3 | 81.4 | 81.6 | 81.7 | 81.5 |
| South West | 80.2 | 80.5 | 80.9 | 81.1 | 82.0 | 82.0 |
| England | 81.2 | 81.4 | 81.8 | 82.0 | 81.3 | 81.3 |

LIFE EXPECTANCY AT AGE 65

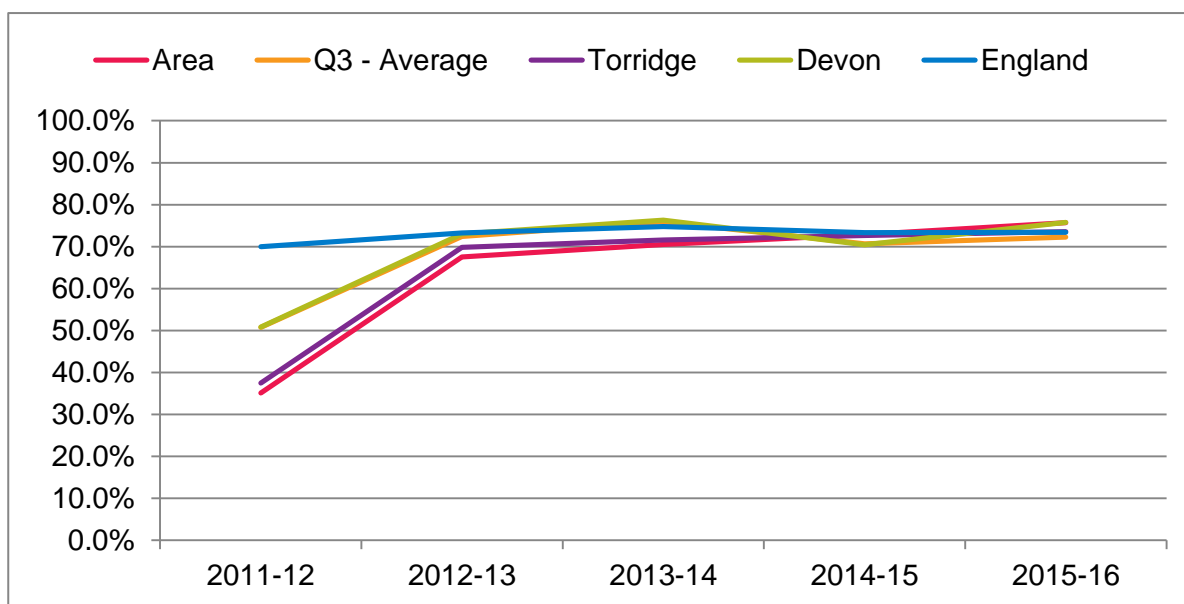
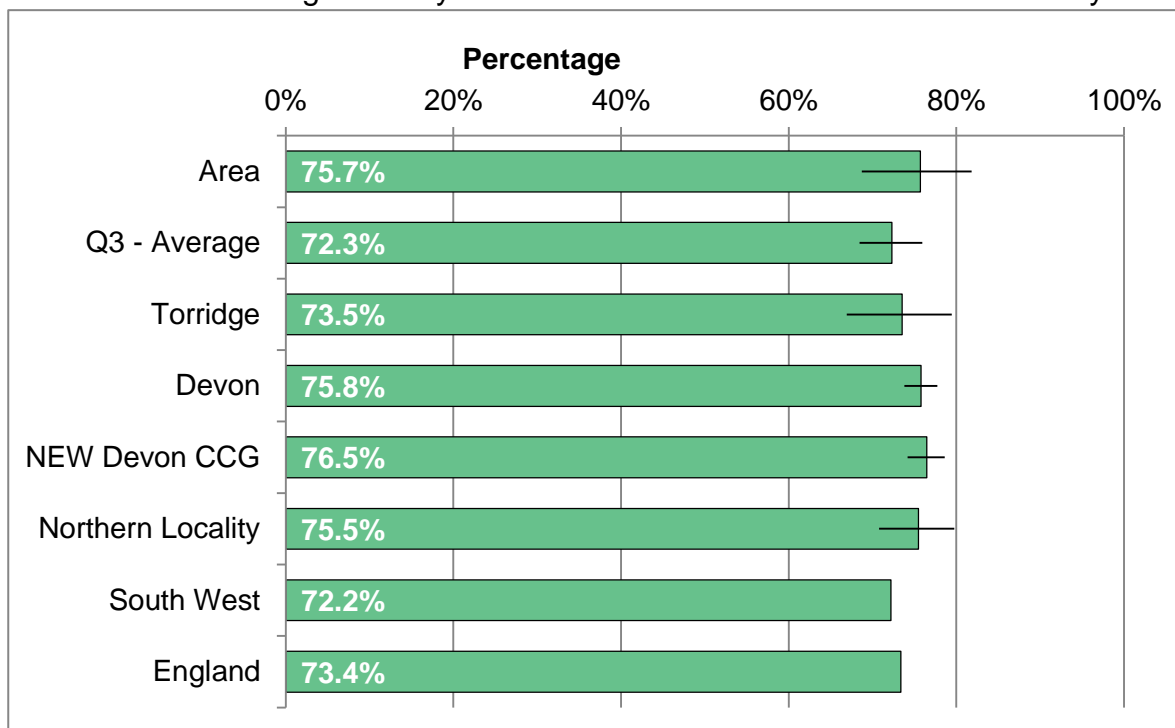
Average life expectancy at age 65 for residents. Combined for all persons.



| Area | 2006-10 | 2007-11 | 2008-12 | 2009-13 | 2010-14 | 2011-15 |
|-------------------|---------|---------|---------|---------|---------|---------|
| Deaths per annum | 416 | 429 | 439 | 439 | 449 | 456 |
| Area rate | 20.3 | 20.2 | 20.2 | 20.4 | 20.4 | 20.5 |
| Q3 - Average | 20.1 | 20.3 | 20.3 | 20.4 | 20.6 | 20.6 |
| Torridge | 20.1 | 20.0 | 20.2 | 20.3 | 20.2 | 20.1 |
| Devon | 20.4 | 20.5 | 20.6 | 20.8 | 20.9 | 20.8 |
| NEW Devon CCG | 20.1 | 20.2 | 20.3 | 20.4 | 20.6 | 20.5 |
| Northern Locality | 20.0 | 20.1 | 20.1 | 20.3 | 20.3 | 20.2 |
| South West | 19.2 | 19.4 | 19.7 | 19.8 | 20.5 | 20.4 |
| England | 19.9 | 20.1 | 20.3 | 20.4 | 19.4 | 19.4 |

LEARNING DISABILITY ACCOMMODATION

Adults with a learning disability who live in their own home or with their family.

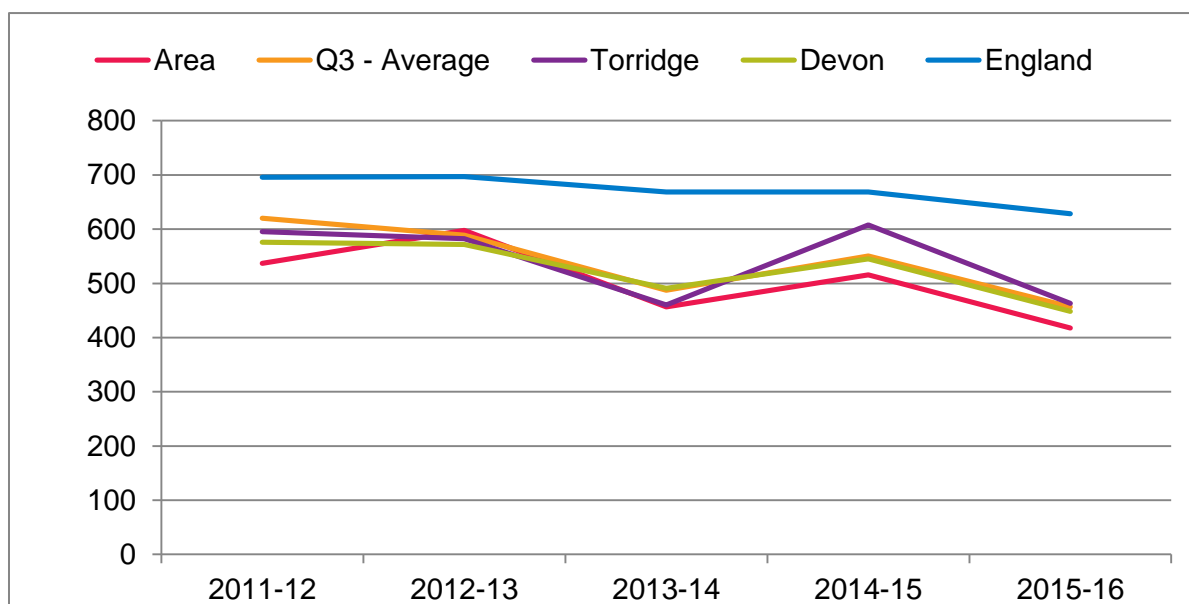
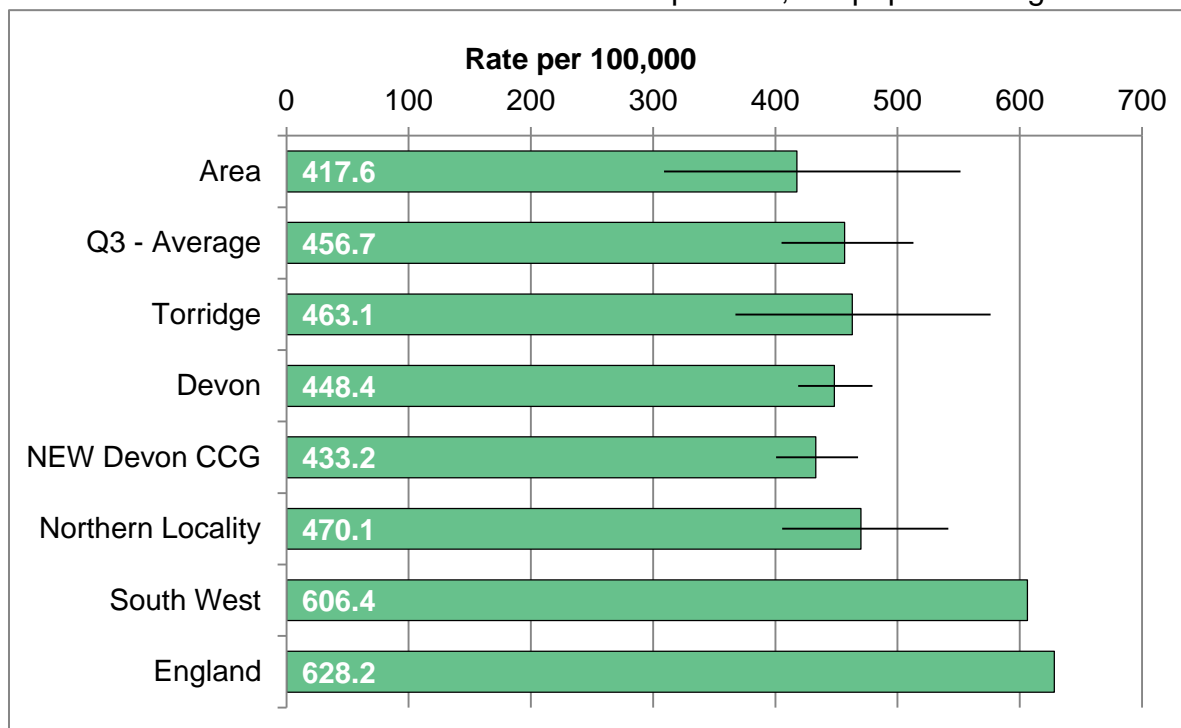


| Area | 2011-12 | 2012-13 | 2013-14 | 2014-15 | 2015-16 |
|-------------------|---------|---------|---------|---------|---------|
| Number per annum | 65 | 129 | 146 | 113 | 134 |
| Area rate | 35.1% | 67.5% | 70.5% | 72.9% | 75.7% |
| Q3 - Average | 50.8% | 72.4% | 75.9% | 70.6% | 72.3% |
| Torridge | 37.4% | 69.8% | 71.5% | 72.6% | 73.5% |
| Devon | 50.8% | 73.0% | 76.3% | 70.4% | 75.8% |
| NEW Devon CCG | 52.0% | 76.1% | 78.0% | 70.8% | 76.5% |
| Northern Locality | 42.4% | 75.9% | 75.2% | 73.7% | 75.5% |
| South West | 65.3% | 66.5% | 72.7% | 69.5% | 72.2% |
| England | 70.0% | 73.3% | 74.8% | 73.3% | 73.4% |

CCG figure is Devon County Council component of CCG only

PERMANENT ADMISSIONS TO CARE HOMES

Permanent admissions to care homes in area per 100,000 population aged 65 and over.

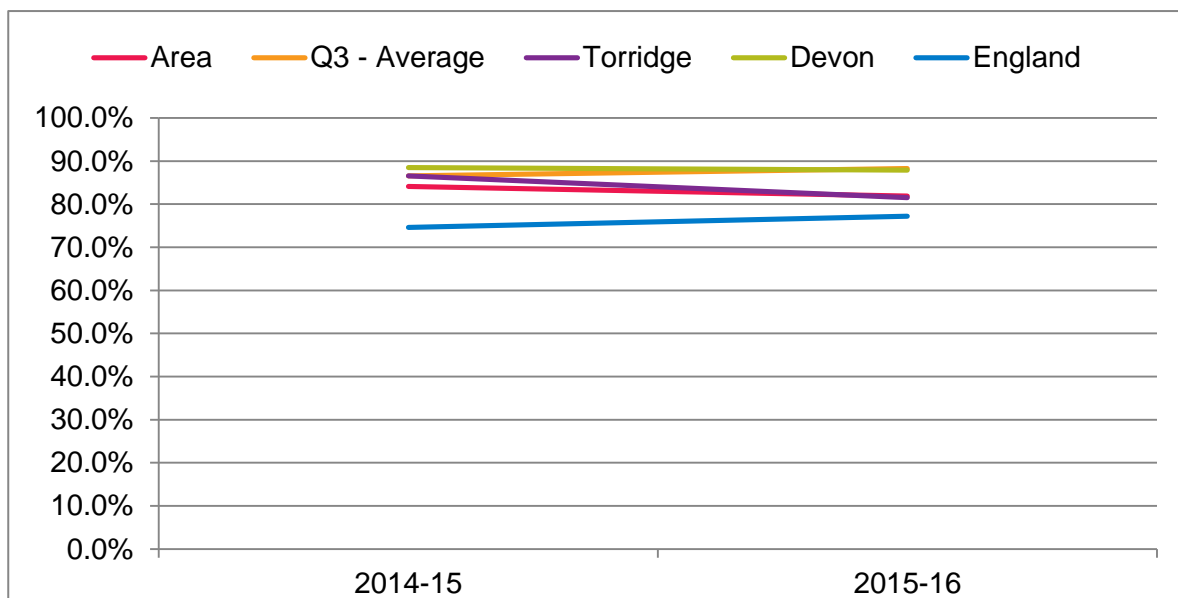
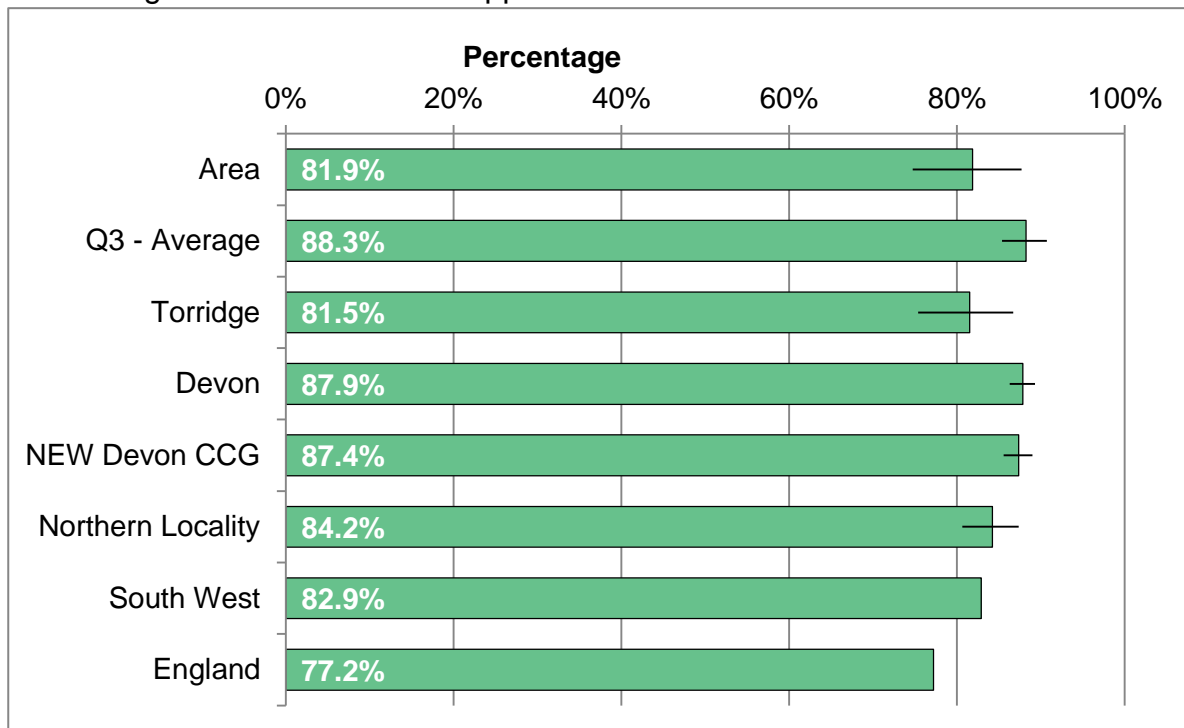


| Area | 2011-12 | 2012-13 | 2013-14 | 2014-15 | 2015-16 |
|-------------------|---------|---------|---------|---------|---------|
| Number per annum | 56 | 65 | 51 | 59 | 49 |
| Area rate | 536.8 | 597.8 | 456.5 | 515.6 | 417.6 |
| Q3 - Average | 620.2 | 589.2 | 487.5 | 550.6 | 456.7 |
| Torridge | 595.4 | 582.5 | 460.3 | 607.8 | 463.1 |
| Devon | 575.8 | 571.7 | 490.6 | 545.3 | 448.4 |
| NEW Devon CCG | 578.9 | 585.3 | 490.5 | 525.3 | 433.2 |
| Northern Locality | 629.2 | 709.9 | 539.9 | 554.6 | 470.1 |
| South West | 677.7 | 680.8 | 656.2 | 678.2 | 606.4 |
| England | 695.9 | 697.2 | 668.4 | 668.8 | 628.2 |

CCG figure is Devon County Council component of CCG only

OUTCOME OF SHORT-TERM SUPPORT

Percentage of short-term care support that results in no further need for services.



| Area | 2014-15 | 2015-16 |
|-------------------|---------|---------|
| Number per annum | 90 | 122 |
| Area rate | 84.1% | 81.9% |
| Q3 - Average | 86.6% | 88.3% |
| Torridge | 86.5% | 81.5% |
| Devon | 88.5% | 87.9% |
| NEW Devon CCG | 88.9% | 87.4% |
| Northern Locality | 90.8% | 84.2% |
| South West | 76.0% | 82.9% |
| England | 74.6% | 77.2% |

CCG figure is Devon County Council component of CCG only

SOURCES AND DEFINITIONS

Page 3, Indicator Summary

This summary shows all the main measures within the JSNA profile, showing the value for the area, compared with the local authority district and Devon as a whole. A statistical significance column is also included which identifies if the area is significantly higher (orange shading), significantly lower (blue shading) or not significantly different (grey shading) than the Devon figure. Sources are described in individual indicator definitions below.

Page 4, 2011 Census Profile

This summary shows measures for the area from the 2011 Census compared with the local authority district, Devon, the South West and England. A statistical significance column is also included as per the indicator summary on page 3. The socio-economic status section shows the percentage of the working-age population in different occupational (occ) groups, The qualifications and students sections shows the percentage of the population with highest level of qualifications for adults, and the percentage of the total population who are full-time (FT) students. For highest level of qualification, level 1 is foundation level, level 2 is GCSEs at grades A* to C, level 3 is A Level, and level 4 is degree level or above. Household (HH) characteristics highlights features of the household and dwelling, including how many are headed by a lone parent, lack a car or van, along with aspects of occupancy and housing including overcrowding and central heating. Average household size is the number of people in the area divided by the number of households. Housing tenure shows the percentage of household spaces in different forms of ownership. Ethnicity shows the percentage of the total population in different ethnic groups. In the health section, general health is reported on a five point scale from very good to very bad, and this measure shows the percentage of people who rate their health as bad or very bad. The question on long-term illness and disability in the 2011 census asked if people's day-to-day activities were limited because of a health problem or disability which has lasted, or is expected to last at least 12 months, including problems relating to old age. These measures show the percentage limited and the percentage limited a lot both for the total population, and for those aged 16 to 64 only. Finally, caring responsibilities and the time spent on them are recorded, relating to both family members and acquaintances looked after because of long-term physical or mental ill-health/disability, or old age. These measures show the percentage of the total population providing care, and the percentage of the total population who provide care for 50 hours or more.

Source: www.ons.gov.uk/census/2011census

Page 5, Population

This indicator shows the number and percentage of the population by age group and sex. The population pyramid shows how the population structure of the area relates to the England profile. The trend chart highlights how the population by broad age group has changed over time. The population table shows how the population profile in the area compares to its hierarchy of areas described on page 2. Source is ONS Mid-Year Population Estimates.

Source: <https://www.ons.gov.uk/search?q=population>

SOURCES AND DEFINITIONS

Pages 6 to 10, Indices of Deprivation

The 2015 Indices of Deprivation rank areas known as Lower Super Output Areas across England from 1 (most deprived) to 32844 (least deprived) according to the levels of deprivation. The Index of Multiple Deprivation (IMD) is the overall index of deprivation, which produces a score known as the IMD score, and a national rank. Page 6 shows the current IMD score and the trend in the rank over time. The Indices of Deprivation are composed of a number of domains and sub-domains as shown on pages 7 and 8 which compare the rank of the area with the average rank within the district, and the average rank within Devon. The income deprivation domain (page 9) and the employment deprivation domain (page 10) show the percentage of the population on low incomes and involuntary exclusion from employment respectively. The source is the Department for Communities and Local Government.

Source: www.gov.uk/government/statistics/english-indices-of-deprivation-2015

Page 11, Birth Rate

The birth rate is the total number of live births expressed as a rate per 1,000 females aged between 15 and 44 in the area. The source are the annual births extract from the Health and Social Care Information Centre.

Source: www.hscic.gov.uk/popbirthdeath

Page 12, Early Help DAF Assessments

The Devon Assessment Framework (DAF) is a process for collecting family information and developing an in-depth plan for children with educational or disability related needs aged 0 to 24. This measure shows the number of assessments undertaken as a percentage of all persons aged 0 to 24 in the area. The source is Devon County Council.

Source: <https://new.devon.gov.uk/send/send-information/how-does-my-child-get-support/>

Page 13, Children In Need

A child in need is defined under the Children Act 1989 as a child who is unlikely to reach or maintain a satisfactory level of health or development, or their health or development will be significantly impaired without the provision of services, or the child is disabled. This measure is children in need as a percentage of all persons aged 0 to 24. Source is the Annual Children in Need Census.

Source: https://www.gov.uk/government/uploads/system/uploads/attachment_data/file/466133/CIN15-16_Guide_v1.1_web_version.pdf

Page 14, Safeguarding Enquiries (MASH)

The Devon Multi-Agency Safeguarding Hub (MASH) is the central team responsible for receiving all safeguarding and child protection enquiries in Devon and coordinating the local response to these across services including police, probation, fire, ambulance, health, education and social care. This measure shows the number of enquiries to the MASH as a rate per 1,000 people aged 0 to 17. Source is Devon Multi-Agency Safeguarding Hub.

Source: <https://new.devon.gov.uk/educationandfamilies/child-protection>

SOURCES AND DEFINITIONS

Page 15, English As An Additional Language

A learner of English as an additional language (EAL) is a pupil whose first language is other than English. First language is the language to which the child was initially exposed to during early development and continues to use this language in the home and community. This measure is the percentage of pupils (primary and secondary) for whom English is an additional language.

Source:

<https://new.devon.gov.uk/supportforschools/administration/school-census>

Page 16, Special Educational Needs

The term 'special educational needs' refers to children who have learning difficulties or disabilities that make it harder for them to learn than most children of the same age. Many children will have special needs of some kind at some time during their education. This measure shows the number of children in any special educational needs category as a percentage of all pupils.

Source:

<https://new.devon.gov.uk/supportforschools/administration/school-census>

Page 17, Pupils In Well Rated Schools

Ofsted inspect and regulate educational services. This involves regular inspections of schools which are classed as four grade scale encompassing excellent, good, requires improvement and inadequate. This measure shows the percentage of primary and secondary school pupils in an area who attend a school rated as good or outstanding.

Source:

<https://new.devon.gov.uk/supportforschools/administration/school-census>

Page 18, GCSE Attainment: Five Or More A*-C including English & Maths

Number of pupils at end of Key Stage 4 in schools maintained by the local education authority (includes special schools and pupil referral units) achieving five or more GCSEs at grades A* to C or equivalent, including English and maths GCSE as a percentage of all pupils at end of Key Stage 4.

Source: <https://www.gov.uk/government/collections/statistics-gcses-key-stage-4>

Page 19, Not In Education, Employment Or Training

A 16 to 18 year old is defined as being in education or training if he or she is in full-time education, work based learning (WBL), employer funded training, or other education and training. A 16 to 18 year old is defined as being in employment if he or she is an employee, self-employed, on a WBL programme or an unpaid family worker. Source is the Department for Education.

Source: <https://www.gov.uk/government/collections/statistics-neeet>

Pages 20 to 25, Working Age Benefit Claimants

Based on the number of people claiming Department of Work and Pensions (DWP) benefits as a percentage of the total working-age (16 to 64) population. Measures include rates for all benefits (page 20), persons aged 16 to 24 only (page 21), Employment Support Allowance or Incapacity Benefit which relates to poor health (page 22), the carers client group (page 23), the disabled client group (page 24), and Job Seekers Allowance claimants (page 25).

Source: <http://tabulation-tool.dwp.gov.uk/NESS/page1.htm>

SOURCES AND DEFINITIONS

Page 26, Fuel Poverty

The percentage of households that experience fuel poverty based on the "Low income, high cost" methodology, where required fuel costs are above the national average, and where spending that amount would be left with a residual income below the official fuel poverty line. The key elements in determining fuel poverty are income, fuel prices and fuel consumption.

Source: <https://www.gov.uk/government/collections/fuel-poverty-sub-regional-statistics>

Page 27, Health-Related Behaviour Estimates

These local level estimates were derived by applying rates on the levels of health-related behaviours and risk factors from national surveys to local adult populations broken down by age, sex and deprivation. The source of the rates for current smoking, increased or higher risk drinking (21+ units a week for males, 14+ units a week for females), physical inactivity (less than 30 minutes of moderate physical activity per week) and obesity (BMI 30+) was the Health Survey for England.

Sources: <http://www.hscic.gov.uk/healthsurveyengland>

Page 28, Mental Ill Health Estimates

These local level estimates were derived by applying rates mental health problems from national surveys to local adult populations broken down by age, sex and deprivation. The source of the rates for the modelled self-reported wellbeing estimates is the ONS Annual Population Survey 2011-12. The source of the estimated prevalence figures for mixed anxiety and depression, anxiety and depression is the Adult Psychiatric Morbidity Survey 2014, and the source of the estimated dementia prevalence is the Dementia UK update from 2014.

Sources: <http://apps.opendatacommunities.org/showcase/wellbeing>
<http://www.hscic.gov.uk/pubs/psychiatricmorbidity07>
<https://www.alzheimers.org.uk/dementiauk>

Page 29, Access to Psychological Therapies

Improving Access to Psychological Therapies (IAPT) is an NHS programme rolling out services across England offering interventions approved by the National Institute of Health and Clinical Excellence (NICE) for treating people with depression and anxiety disorders. This measure is an age standardised rate per 100,000 population age 16 and over of referrals to the service.

Source: <http://www.iapt.nhs.uk/>

Page 30, Use Of Health Services

The availability and use of health services varies considerably by area. This set of charts and tables show the number and percentage of health care admissions and attendances for the area by service used. The services are the four hospitals in Devon, community hospitals and local minor injury units and walk-in centres, providers outside Devon, and in the case of births, home births. The activity types are non-elective or unplanned admissions, elective or planned admissions, urgent care activity (A&E, walk-in centres and minor injuries unit), and births. Sources is the Secondary Uses Service Commissioning dataset.

SOURCES AND DEFINITIONS

Pages 31 to 35, Rates of Admission and Attendance at Hospitals

Direct age standardised rate of admission or attendance to hospital per 100,000 population. The categories covered are emergency admissions (unplanned admissions to a hospital bed excluding transfers), elective or planned admissions, urgent care activity (A&E, walk-in centres and minor injury unit), accidental falls (admissions with accidental fall ICD10 W0 or W1 in any diagnosis field), and alcohol-related admissions (admissions to hospitals with alcohol-specific cause, or alcohol-related cause using 2014 definitions).

Source: <http://www.hscic.gov.uk/sus>
<http://www.lape.org.uk/downloads/AlcoholAttributableFractions.pdf>

Page 36, Killed Or Seriously Injured On Roads

The vast majority of road traffic collisions are preventable and can be avoided through improved education, awareness, road infrastructure and vehicle safety. This measure provided the rate of people killed or seriously injured on the roads per 100,000 resident population.

Source: <https://www.gov.uk/government/collections/road-accidents-and-safety-statistics>

Pages 37 and 38, Life Expectancy

Life expectancy is the average number of years a person would expect to live based on contemporary mortality rates. For a particular area and time period, it is an estimate of the average number of years a newborn baby would survive if he or she experienced the age-specific mortality rates for that area and time period throughout his or her life.

Page 39, Learning Disability Accommodation

The proportion of all adults with a learning disability known to the council who are recorded as living in their own home or with their family. The definition of individuals 'known to the council' is currently restricted to those adults with a learning disability (with a primary client group of LD) who have been or should have been assessed or reviewed during the year.

Source: <http://ascof.hscic.gov.uk/>

Page 40, Permanent Admissions To Care Homes

Number of permanent admissions to residential and nursing care homes in the area per 100,000 population aged 65 and over. People counted as a permanent admission include residents where the local authority makes any contribution to the costs of care, and registered care homes for nursing care.

Source: <http://ascof.hscic.gov.uk/>

Page 41, Outcome Of Short-Term Support

The aim of short-term services is to re-able people and promote their independence. This measure covers the proportion of new adult social care service users receiving a short-term servicing during the year for whom the outcome of the service was either no ongoing support or support at a lower level. The source is the Adult Social Care Outcomes Framework.

Source: <http://ascof.hscic.gov.uk/>

SOURCES AND DEFINITIONS

GLOSSARY OF TERMS

Crude Rate

A crude rate is the number of cases in an area per head of population.

Direct Age Standardised Rate (DASR)

An age-adjusted rate which shows the rate that would have occurred if the observed age-specific rates had occurred in a standard population.

Confidence Interval

A confidence interval is a statistical range which indicates the level of uncertainty around a particular figure, as seen in the whisker lines on charts.

Statistical Significance

The likelihood that a result or relationship is caused by something other than random chance.

Life Expectancy

The average period that a person may expect to live. This is represented as a figure 'at birth', and as figures for life expectancy from a defined age.

GEOGRAPHIC AREAS

This section describes the geographic areas available within the JSNA profiles

Lower Super Output Areas (LSOAs) are areas defined by the Office for National Statistics for the release of small area data. There are 457 in Devon.

Middle Super Output Areas (MSOAs) are groupings of LSOAs agreed by the local authority and the Office for National Statistics. There are 107 in Devon.

Wards are areas covered by Councillors within Devon's eight local authority districts. There are 202 in Devon.

Electoral Divisions are areas covered by Devon County Council Councillors. There are 62 in Devon.

Devon Towns are locally defined areas for the main market and coastal towns in Devon and the rural areas surrounding them. There are 29 in Devon.

Districts are lower tier local authority districts, responsible for housing, environmental health, waste collection, council tax collection, local planning and licensing. There are eight in Devon.

Clinical Commissioning Group Sub-Localities are local groupings of GP practices and NHS teams which coordinate care. There are nine in Devon.