

# DEVON HEALTH AND WELLBEING OUTCOMES REPORT

## Priority 2: Living Well

Indicator: Mortality Rate from preventable causes

Period: 2014-2016

### RAG Rating

G	Green
	Amber
	Red

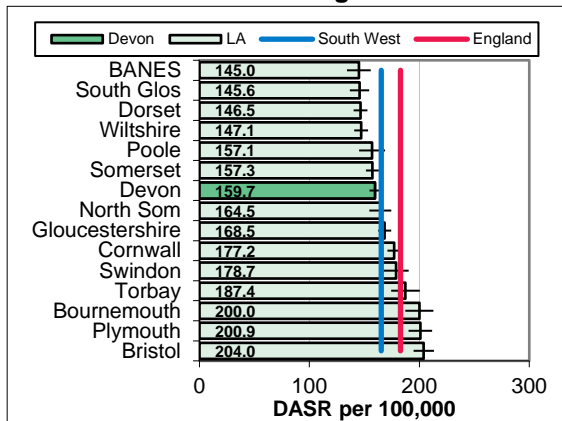
### Overview

The mortality rate from causes considered preventable in Devon is 159.7 per 100,000, which is significantly below the South West (165.4), local authority comparator group (164.7) and England (183.0) rates. Within Devon rates were highest in North Devon (197.2) and lowest in the South Hams (127.3). The rate has fallen over time from 204.5 in 2001-03 to 159.7 in 2014-16, with the rate of decline slowing in recent years.

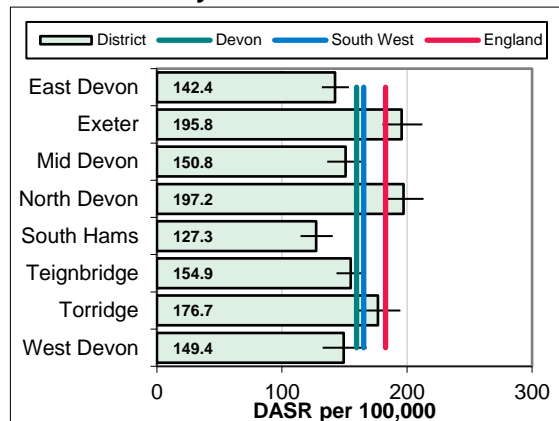
### Equalities

Mortality rates from preventable causes tend to be higher in males than females. Preventable mortality rates are higher in more deprived areas across all age groups.

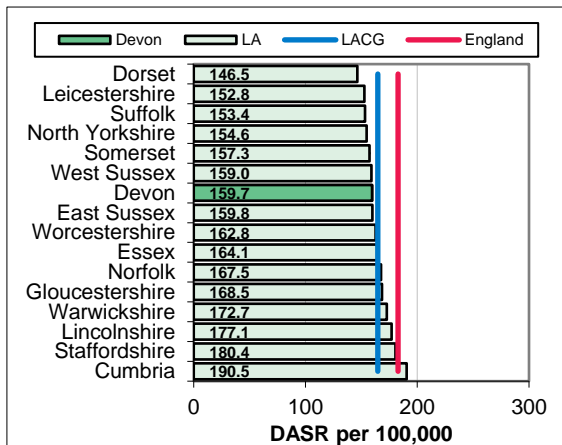
### South West Benchmarking



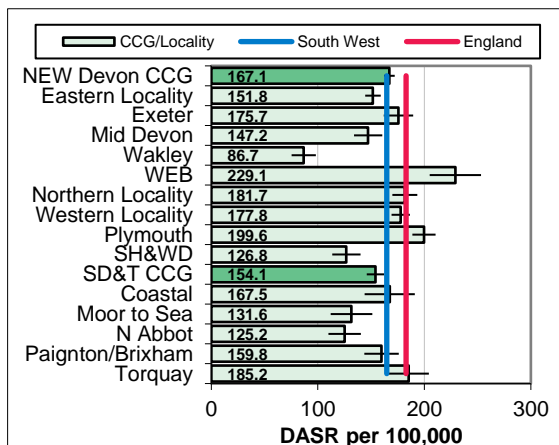
### Local Authority District



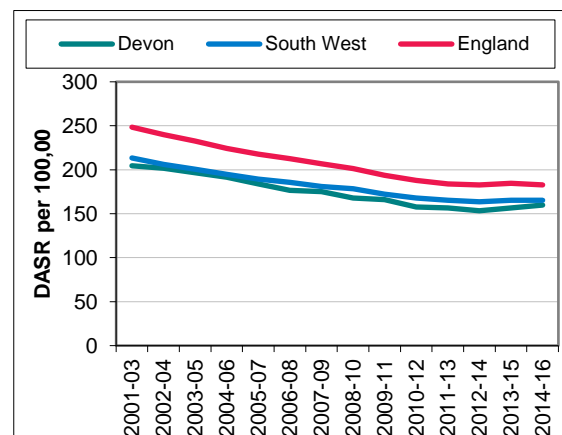
### Local Authority Comparator Group



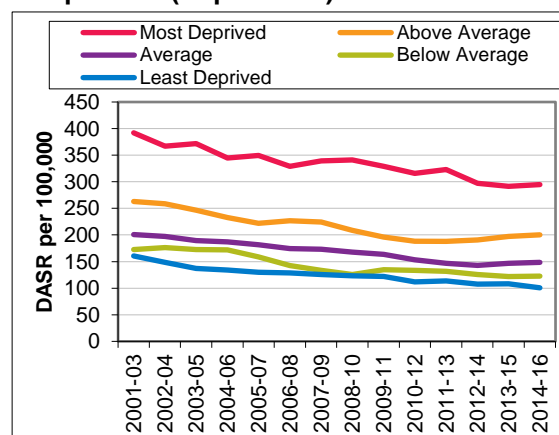
### CCG and Locality Comparison



### Trend



### Inequalities (Deprivation)



# DEVON HEALTH AND WELLBEING OUTCOMES REPORT

## INDICATOR SPECIFICATION

**Priority 2:** Living Well

**Indicator:** Mortality Rate from preventable causes

**Period:** 2014-2016

<b>Description</b>	Direct age-standardised mortality rate from causes considered preventable per 100,000 population
<b>Source</b>	Office for National Statistics annual death extracts (South West Benchmarking, Local Authority District, Trend and Local Authority Comparator Group). Devon Public Health Intelligence Team (Inequalities and CCG / Locality Comparison)
<b>Update Frequency</b>	Annual, 2017 data due autumn 2018
<b>Outcomes Framework</b>	Public Health Outcomes Framework Indicator 4.03
<b>Detailed Specification</b>	Numerator is number of deaths that are considered preventable (classified by underlying cause of death recorded as ICD codes A15-A19, B17.1, B18.2, B20-B24, B90, C00-C16, C18-C22, C33-C34, C43, C45, C50, C53, E10-E14, F10-F16, F18-F19, G31.2, G62.1, I20-I26, I42.6, I71, I80.1-I80.3, I80.9, I82.9, J09-J11, J40-J44, K29.2, K70, K73-K74 (excl. K74.3-K74.5), K86.0, U50.9, V01-Y34, Y60-Y69, Y83-Y84) registered in the respective calendar years, aggregated into quinary age bands (0-4, 5-9, ..., 80-84, 85+). The 2013 revision to the European Standard Population has been used for this measure.
<b>Chart Notes South West</b>	Compares Upper Tier / Unitary Local Authorities in the South West Region. Error bar is 95% confidence interval.
<b>Chart Notes Local Authority</b>	Compares Local Authority Districts in the Devon County Council area. Error bar is 95% confidence interval.
<b>Chart Notes Comparator</b>	Compares Devon to similar upper tier / unitary local authorities using the 15 closest comparator councils from the Institute of Public Finance (IPF) statistical neighbours for 2015. Error bar is 95% confidence interval.
<b>Chart Notes CCG/Locality</b>	Displays rates for the two Clinical Commissioning Groups in the wider Devon area, their localities, and their sub-localities. This is based on the geographic areas defined at Lower Super Output Area level <a href="https://bit.ly/2kiz9zC">https://bit.ly/2kiz9zC</a> . Error bar is 95% confidence interval.
<b>Chart Notes Trend</b>	Compares Devon rate with South West region and England over time.
<b>Chart Notes Inequalities</b>	Compares areas within Devon based on local GP practice deprivation quintiles. Calculated using the 2015 Indices of Deprivation (Index of Multiple Deprivation).

  
**Health and Wellbeing**

  
Devon  
County Council

Committed to promoting health equality